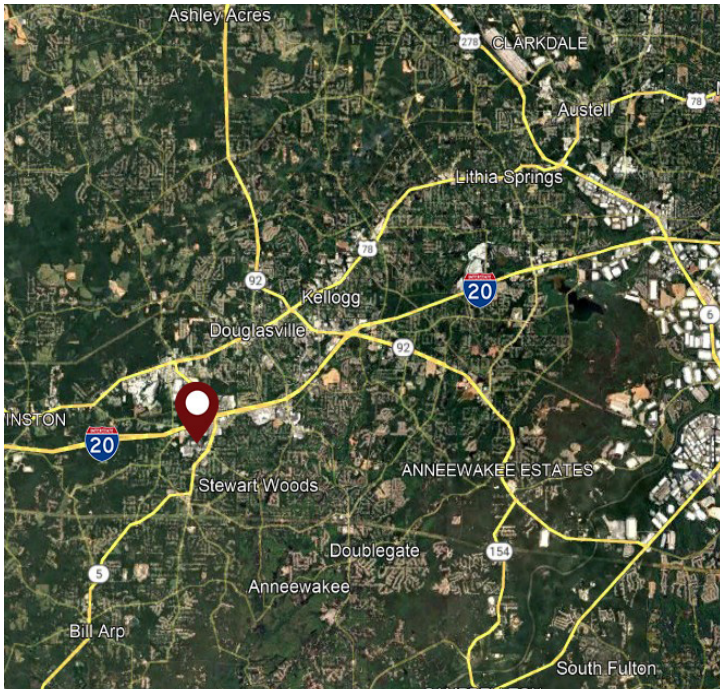


7442 Douglas Blvd | Douglasville, GA 30135



RETAIL SPACE FOR LEASE



Property Features:

- ▶ Total SF: 13,214 SF
- ▶ Acreage: ±1.51 Acres
- ▶ Loading: 1 Drive-in Door
1 Van High Platform
1 Dock High Platform
- ▶ Zoned: GC

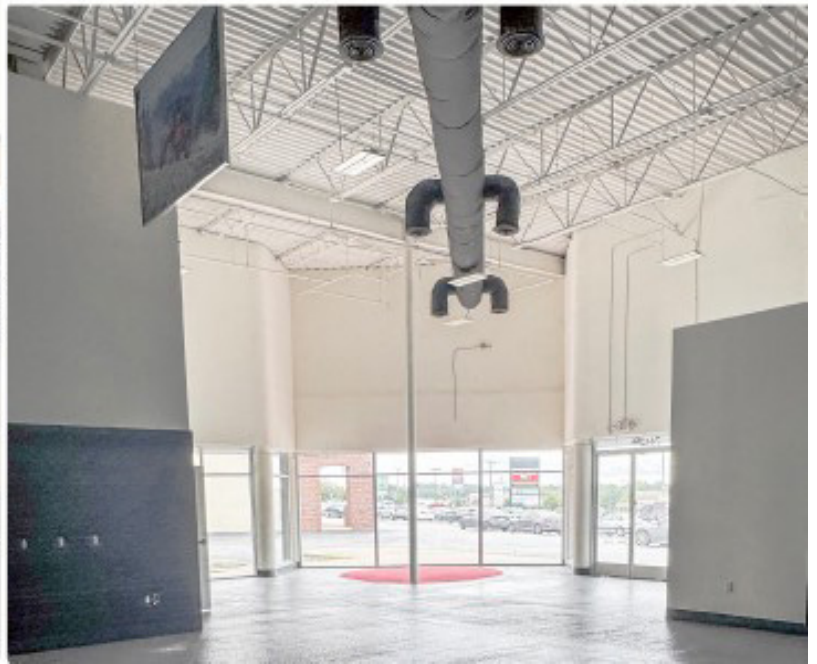


1600 NORTHSIDE DRIVE NW
Suite 100
ATLANTA, GA 30318
404.352.1882
WHNRE.COM

Riley Levitt | Associate
C: 404.717.6566
rlevitt@whnre.com

Matt Sirockman, SIOR | Associate
C: 404.202.2222
msirockman@whnre.com

7442 Douglas Blvd | Douglasville, GA 30135



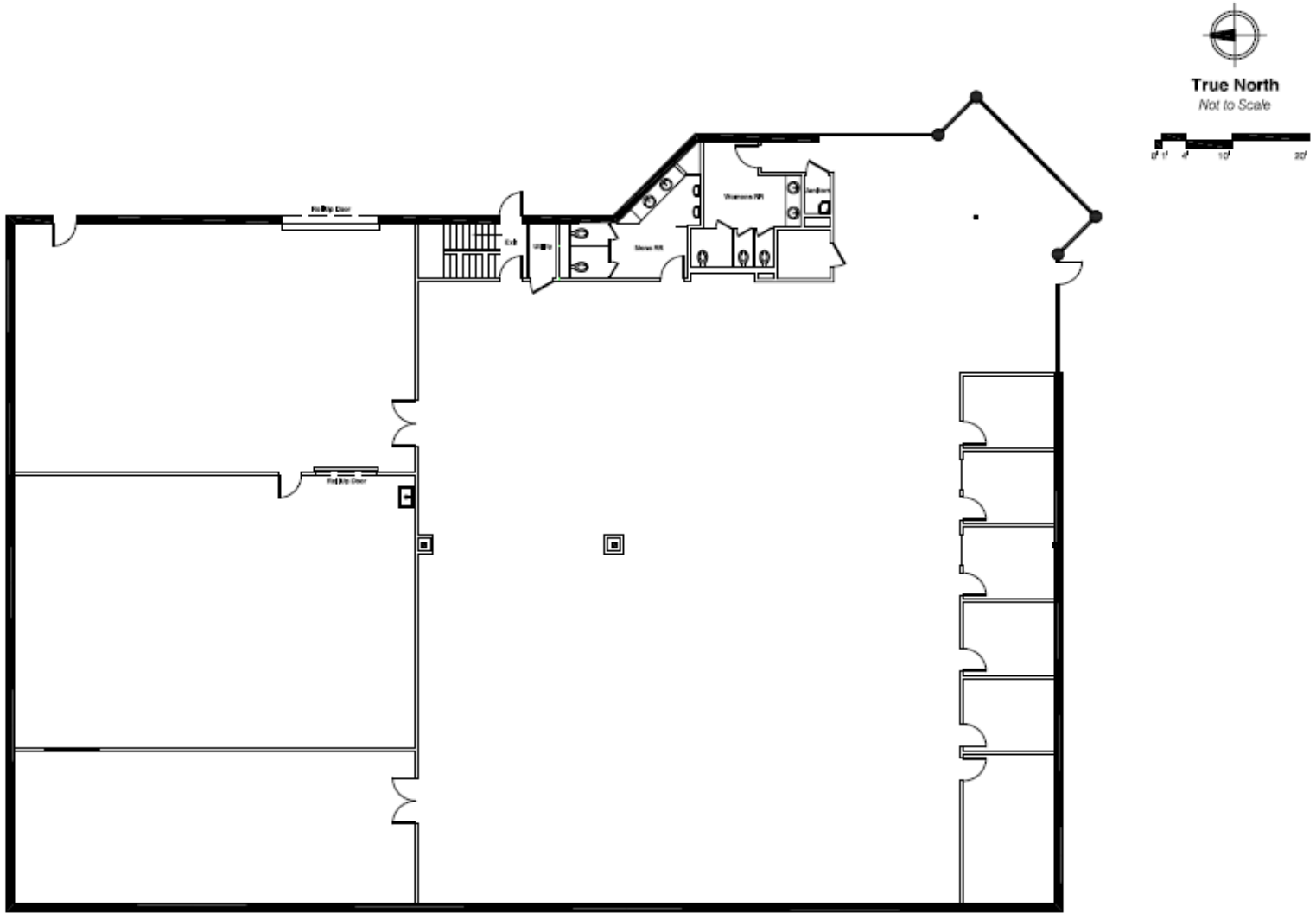
1600 NORTHSIDE DRIVE NW
Suite 100
ATLANTA, GA 30318
404.352.1882
WHNRE.COM

Riley Levitt | Associate
C: 404.717.6566
rlevitt@whnre.com

Matt Sirockman, SIOR | Associate
C: 404.202.2222
msirockman@whnre.com

Every effort has been made to provide accurate information, but no liability is assumed for errors or omissions.

7442 Douglas Blvd | Douglasville, GA 30135



7442 Douglas Blvd, Douglasville, GA 30135

12,732 RSF

Marketing Diagram

November 2025



1600 NORTHSIDE DRIVE NW
Suite 100
ATLANTA, GA 30318
404.352.1882
WHNRE.COM

Riley Levitt | Associate
C: 404.717.6566
rlevitt@whnre.com

Matt Sirockman, SIOR | Associate
C: 404.202.2222
msirockman@whnre.com

Every effort has been made to provide accurate information, but no liability is assumed for errors or omissions.

7442 Douglas Blvd | Douglasville, GA 30135



WILSON HULL & NEAL
 REAL ESTATE, LLC
 1600 NORTHSIDE DRIVE NW
 Suite 100
 ATLANTA, GA 30318
 404.352.1882
 WHNRE.COM

Riley Levitt | Associate
 C: 404.717.6566
 rlevitt@whnre.com

Matt Sirockman, SIOR | Associate
 C: 404.202.2222
 msirockman@whnre.com

Every effort has been made to provide accurate information, but no liability is assumed for errors or omissions.