

21092 BAKE PARKWAY, STE. 110

Lake Forest, CA | 92630



SUBLEASE

John Manion
Executive Vice President
949.207.6424
jmanion@naicapital.com
CalDRE #01247695

NAICapital
COMMERCIAL REAL ESTATE SERVICES, WORLDWIDE

PROPERTY SUMMARY



PROPERTY DESCRIPTION

Suite 110 - 1,959 SF
Asking \$1.65/NNN
Lease Expiration 12/31/2026

LOCATION DESCRIPTION

Spectrum Centre Business Park

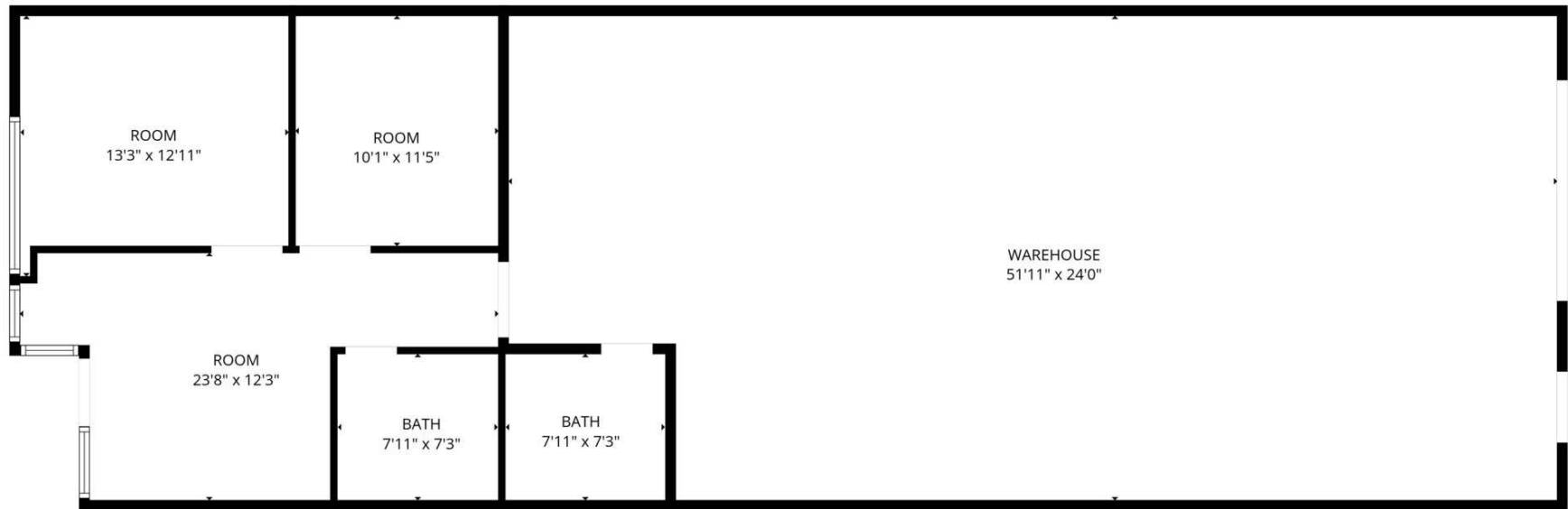
PROPERTY HIGHLIGHTS

- Move-In Ready
- Private Restrooms
- Private Offices
- Warehouse Component w/ Roll Up Door + 15' Clear Height
- Lake Forest/Foothill Ranch Submarket
- Easy Access to 5 and 405 Freeway
- Free Surface Parking 3.44:1,000

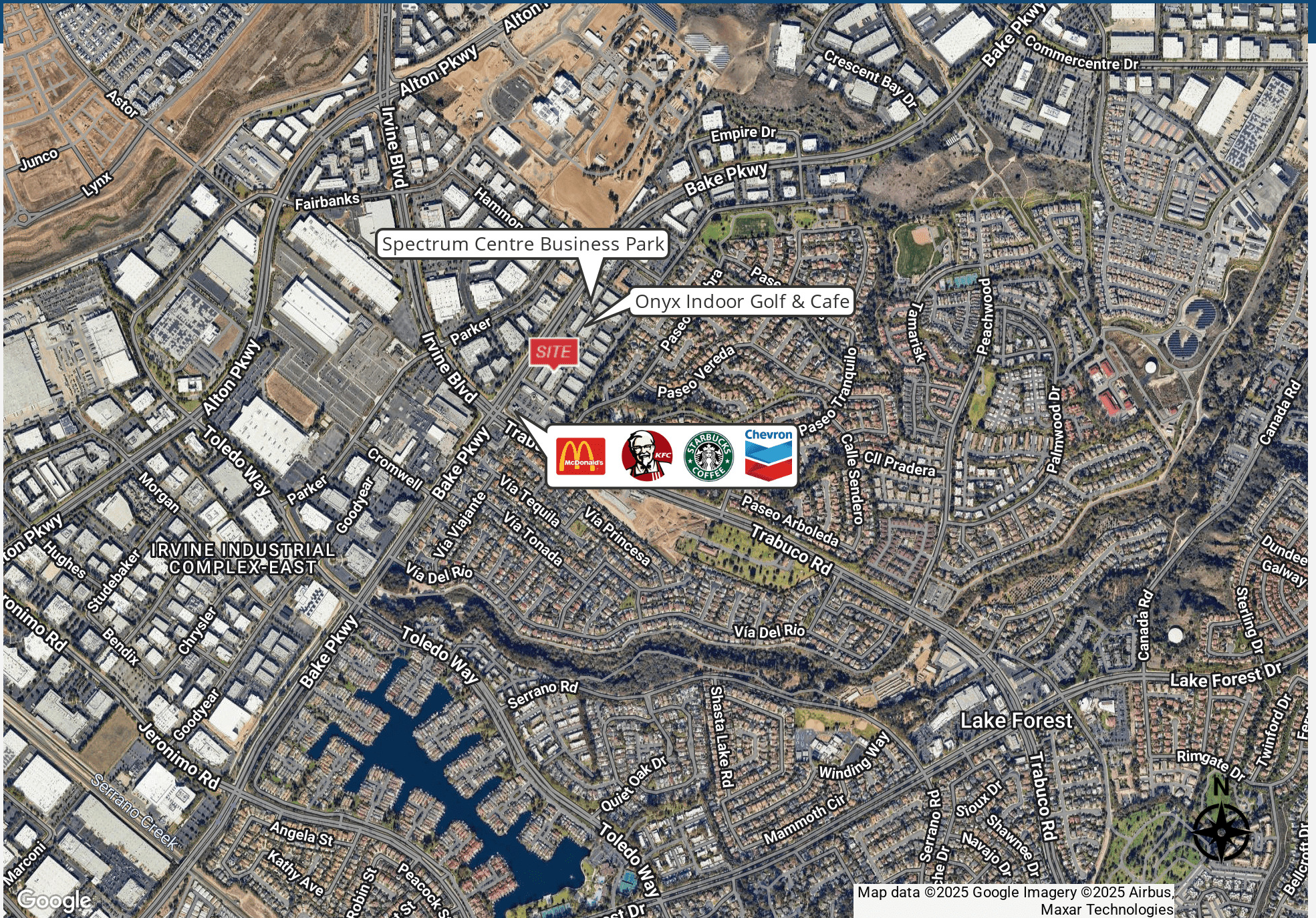
PHOTOS



FLOOR PLANS



RETAILER MAP



21092 BAKE PARKWAY, STE. 110

Lake Forest, CA | 92630



John Manion
Executive Vice President
949.207.6424
jmanion@naicapital.com
CalDRE #01247695

No warranty, express or implied, is made as to the accuracy of the information contained herein. This information is submitted subject to errors, omissions, change of price, rental or other conditions, withdrawal without notice, and is subject to any special listing conditions imposed by our principals. Cooperating brokers, buyers, tenants and other parties who receive this document should not rely on it, but should use it as a starting point of analysis, and should independently confirm the accuracy of the information contained herein through a due diligence review of the books, records, files and documents that constitute reliable sources of the information described herein. Logos are for identification purposes only and may be trademarks of their respective companies. NAI Capital Commercial, Inc. CAL DRE Lic. #82138474

NAI Capital
COMMERCIAL REAL ESTATE SERVICES. WORLDWIDE