

# PLAZA CENTER

10900 NE 8TH STREET, BELLEVUE, WA 98004

For Sublease

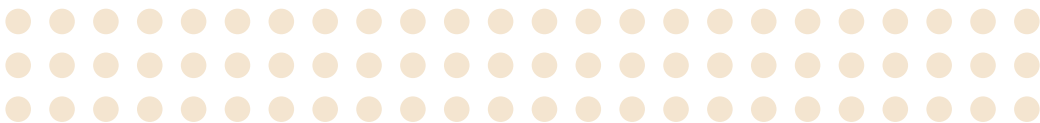


CBRE



# PROPERTY FEATURES

- 10th Floor: 16,628 SF
- Available Immediately
- Master Lease Expires September 30, 2028.
- Will consider shorter terms
- Aggressive well below market asking rate
- Plug & Play new build out with high end finishes
- New building common area improvements recently completed which include fitness center, conference facility with reservable tenant lounge, secured bike storage and cafe

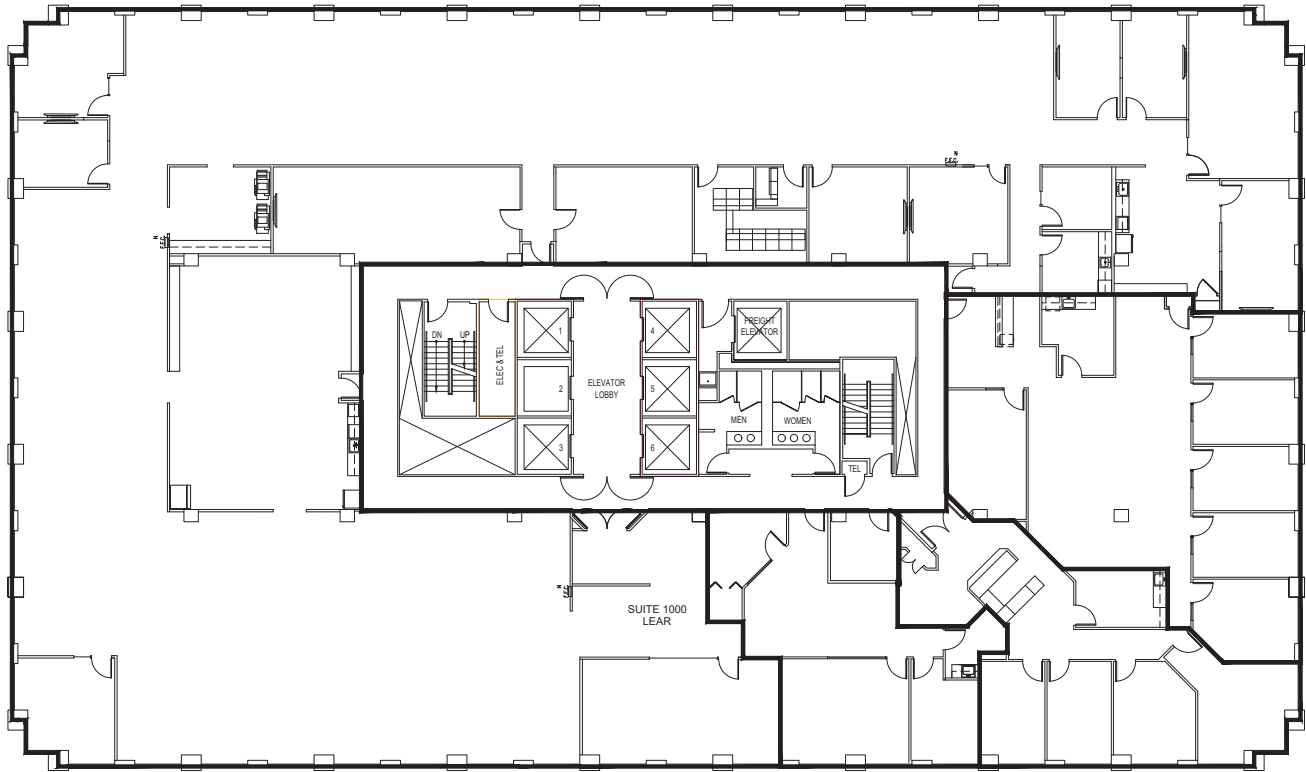


# SUITE 1000

## 16,628 SF



VIRTUAL TOUR



# PLAZA CENTER

10900 NE 8TH STREET, BELLEVUE, WA 98004



## CONTACTS

### **Brian Biege**

Executive Vice President  
+1 425 462 6914  
brian.biege@cbre.com

### **Bryan Oliver**

Senior Vice President  
+1 425 749 9903  
bryan.oliver@cbre.com

### **Jacob Hamlin**

Vice President  
+1 425 462 6930  
jacob.hamlin@cbre.com

### **Scott Barber**

First Vice President  
+1 425 462 6934  
scott.barber@cbre.com

© 2026 CBRE, Inc. All rights reserved. This information has been obtained from sources believed reliable but has not been verified for accuracy or completeness. CBRE, Inc. makes no guarantee, representation or warranty and accepts no responsibility or liability as to the accuracy, completeness, or reliability of the information contained herein. You should conduct a careful, independent investigation of the property and verify all information. Any reliance on this information is solely at your own risk. CBRE and the CBRE logo are service marks of CBRE, Inc. All other marks displayed on this document are the property of their respective owners, and the use of such marks does not imply any affiliation with or endorsement of CBRE. Photos herein are the property of their respective owners. Use of these images without the express written consent of the owner is prohibited. DW\_4.21.26