



sky SEVEN



AT THE CROSSROADS OF CONVENIENCE

IT'S ALL IN THE DETAILS



Secure conference center with lounge & auditorium



Newly renovated lobby



Expansive fitness center with modern locker rooms



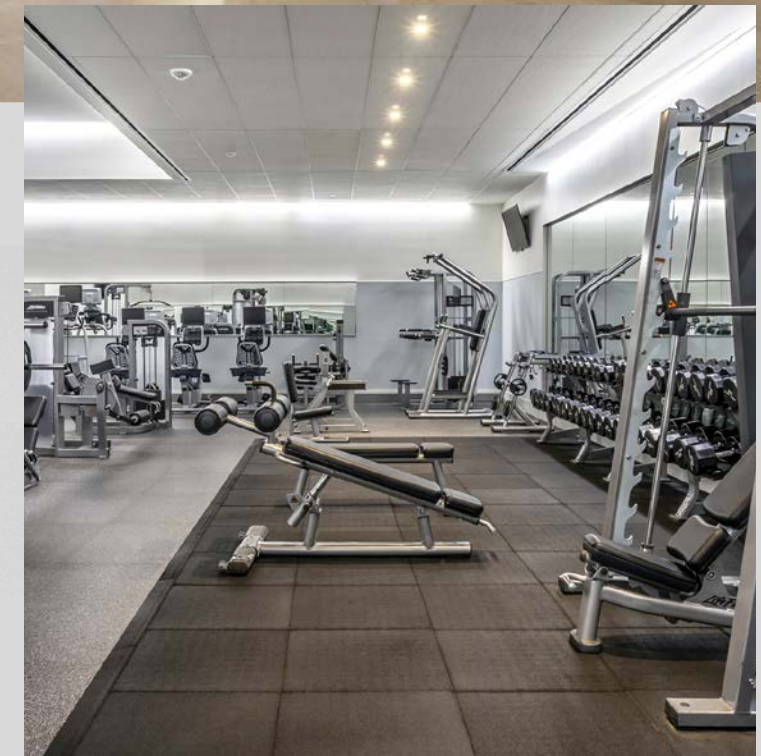
Modern spec suites



Multiple onsite restaurants and extensive local retail



Beautiful landscaping and walkable to Skyline Park



BAILEY'S CROSSROADS

WHERE COMMUNITY IS AT THE CORE



Retail

1. Advance Auto Parts
2. Ashley Store
3. At&T Store
4. Auto Plus Auto Parts
5. Autozone
6. Best Buy
7. Value City Furniture
8. CVS
9. CVS
10. Dick's Sporting Goods
11. Dollar Tree
12. DSW
13. Food Star
14. Giant Food
15. Golf Galaxy
16. Harbor Freight Tools
17. HomeGoods
18. Intellect Computers
19. Marshalls
20. Millennium Mobile
21. Old Navy
22. Party City
23. Petco
24. Pho Supplies Inc
25. REI
26. Ross Dress for Less
27. Staples
28. Target
29. The Vitamin Shoppe
30. TJ Maxx
31. Trader Joe's
32. World Market

Restaurants

1. Addis Cafe
2. Babylon Futbol Cafe
3. Bamian
4. Buffalo Wild Wings
5. Cafe Sazon
6. Chipotle
7. Choong Man Chicken
8. City Diner Restaurant
9. Clyde's at Mark Center
10. District Taco
11. Duangrat's Thai
12. Edy's Chicken & Steak
13. Eyo Restaurant & Bar
14. Fairouz Restaurant
15. Filipino Global Supermarket
16. First Watch
17. Five Guys
18. Full Kee
19. German Gourmet
20. Golden Buffet & Grill
21. Haifa Grill
22. Hook & Reel Cajun Seafood
23. Jenin Pastry
24. Jerusalem Restaurant
25. Kulan Cafe
26. La Terraza Bar & Grill
27. Laze Cafe
28. Le Jardin
29. LongHorn Steakhouse
30. Meaza Restaurant
31. Moe's Southwest Grill
32. Mount Olive Restaurant



33. Mum Aroi
34. Nazret Ethiopia
35. Olive Garden
36. Panera
37. Pho Golden Star
38. Pho Ngoc Hung
39. Popeyes
40. Raaga Restaurant
41. Shah's Halal Food
42. Silver Diner
43. Stone Hot Pizza
44. Sushi Jin Alexandria
45. Taco Bell
46. Taza
47. The Chicken Place
48. Wendy's
49. Wingstop

Hotels

1. Hampton Inn
2. Hilton
3. Homewood Suites



THE DAILY GRIND BREWED FOR SUCCESS

A DAY IN THE LIFE AT SKY 7



8:00AM
Start The
Morning Right

**FIRST
WATCH**

Meet a friend
at First Watch
right down
the street



12:00PM
Grab a Bite



Only a few steps
away, pick up
your order at
District Taco



5:00PM
Happiest
Hour



Meet a friend at
Buffalo Wild Wings
and catch up or
catch the game



10:00AM
Sneak in a
Quick Errand

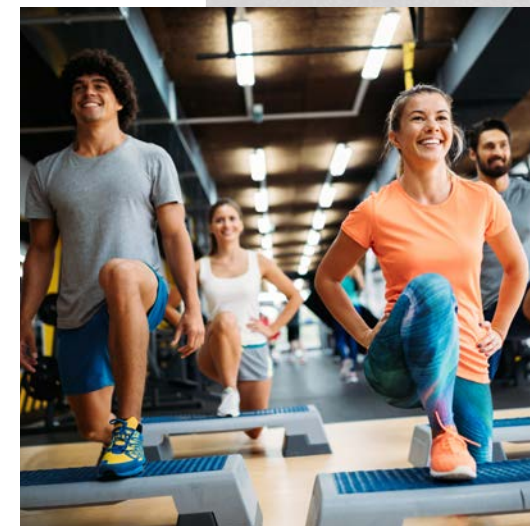


Head over to
Target and grab
your favorite
work day
essentials



2:00PM
A Productive
Afternoon

Host your strategy
meeting in our
expansive onsite
conference center



7:00PM
Sweat it Out

End your day at One
Life Fitness and take
a workout class



STRATEGIC CONNECTIVITY



sky SEVEN



2 min
DRIVE TO
1-395



12 min
SHUTTLE TO
METRO



15 min
TO REAGAN
NATIONAL



12 min
TO NATIONAL
LANDING



12 min
TO THE
PENTAGON

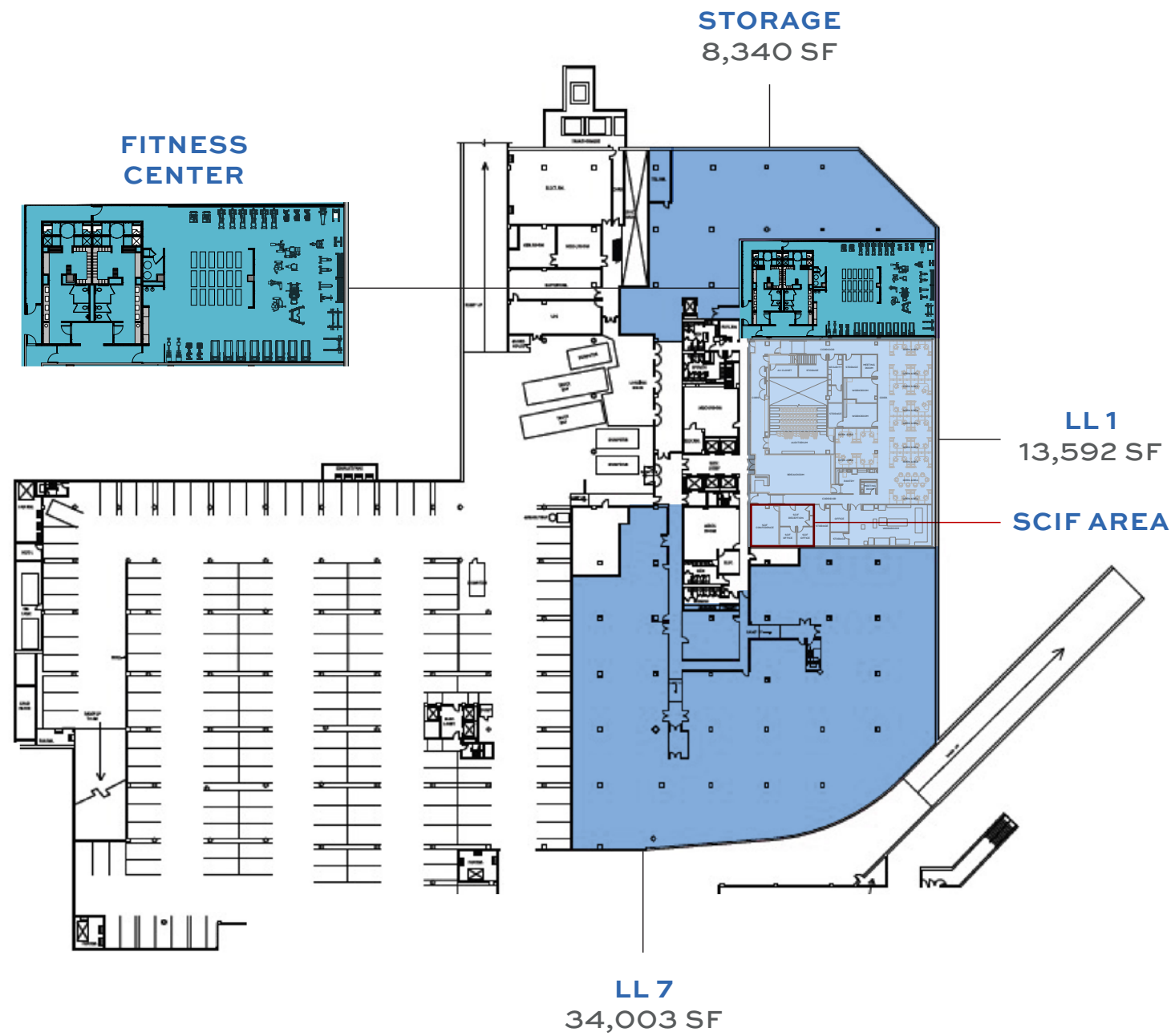


12 min
DOWNTOWN
WASHINGTON

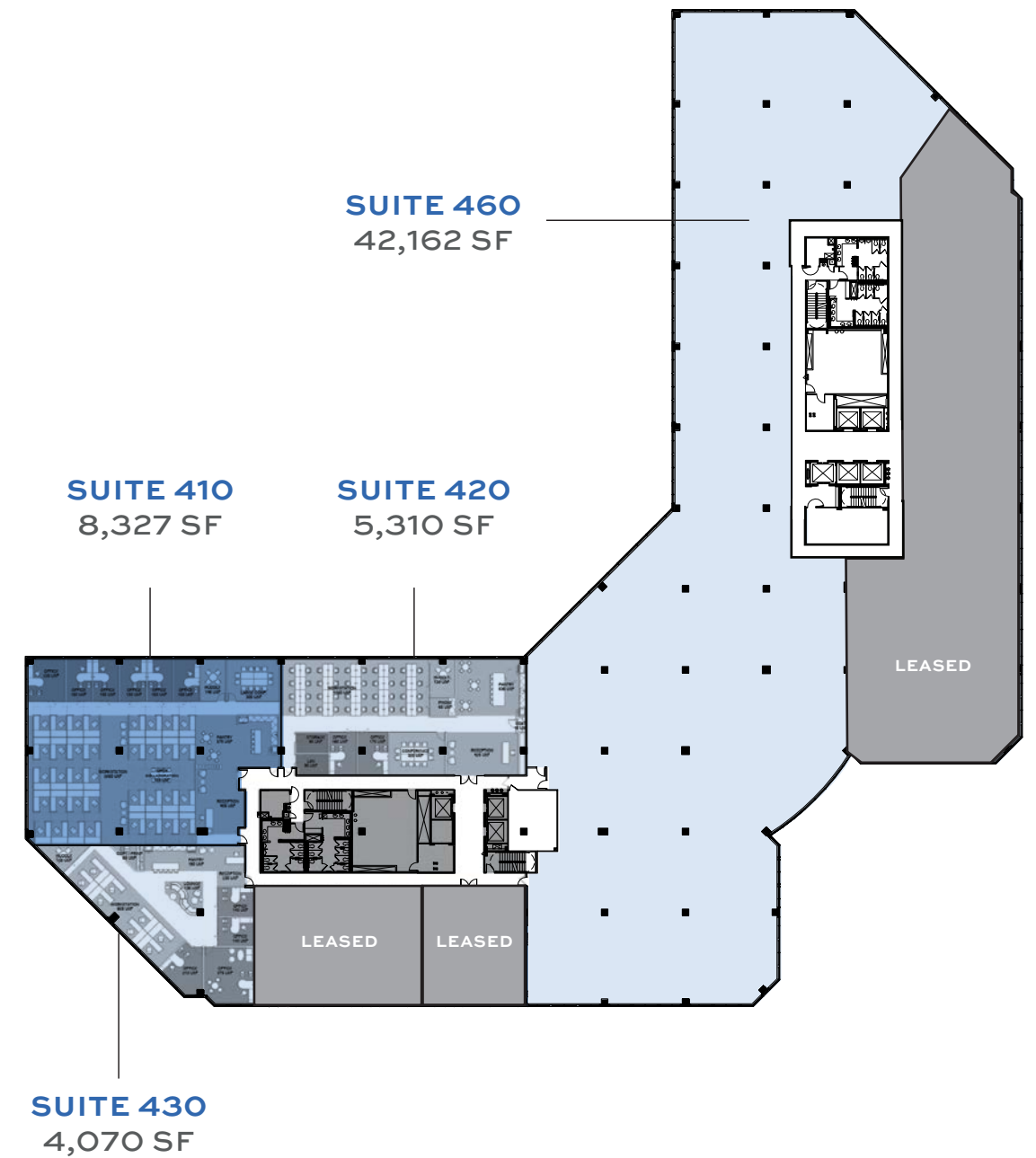
FLOOR PLANS

FLOOR PLANS

LOWER LEVEL 55,935 SF

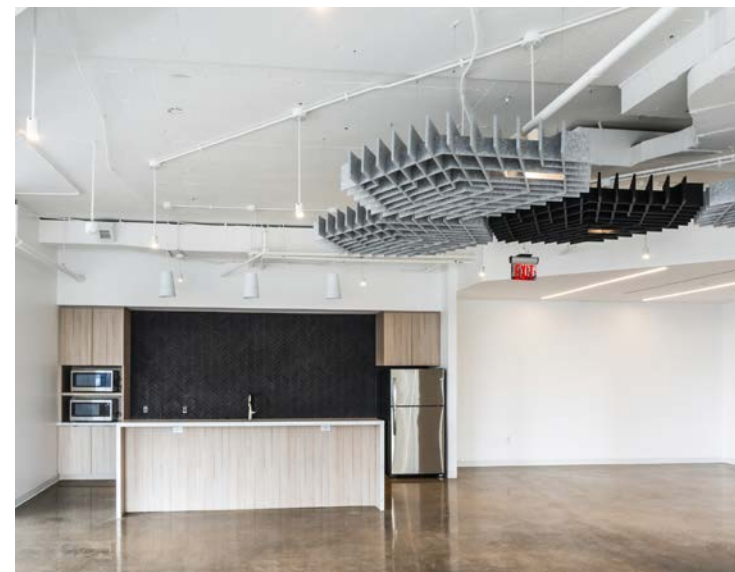
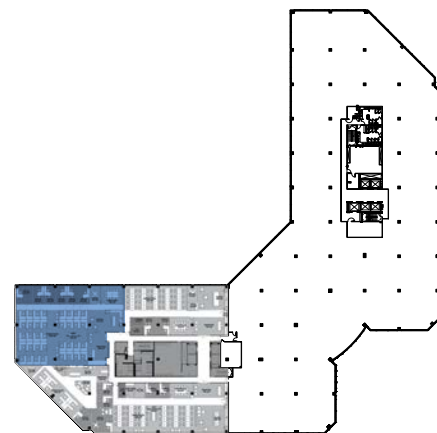
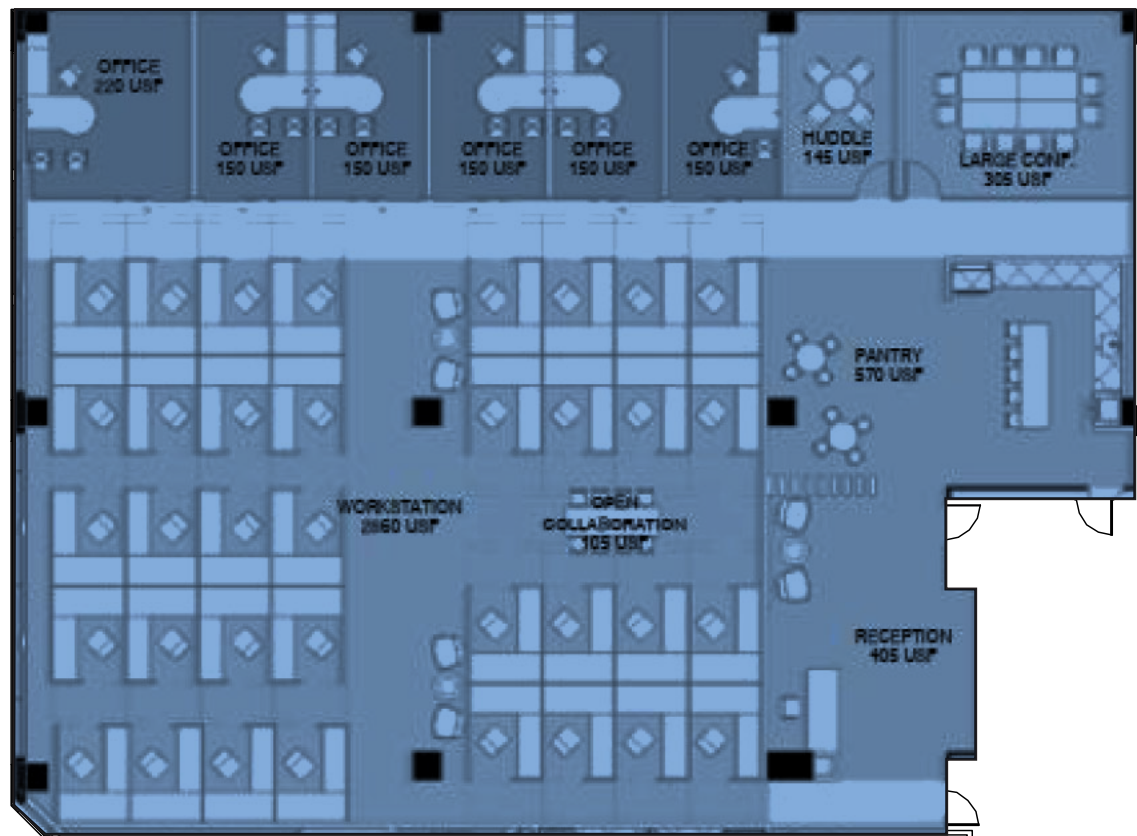


4TH FLOOR



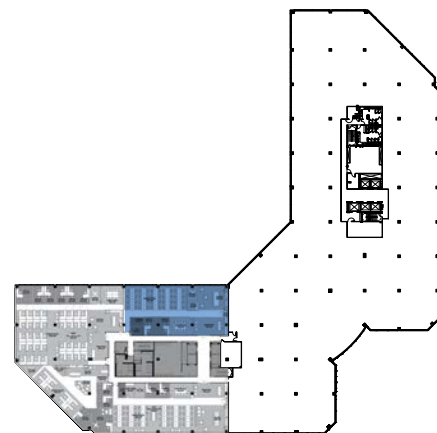
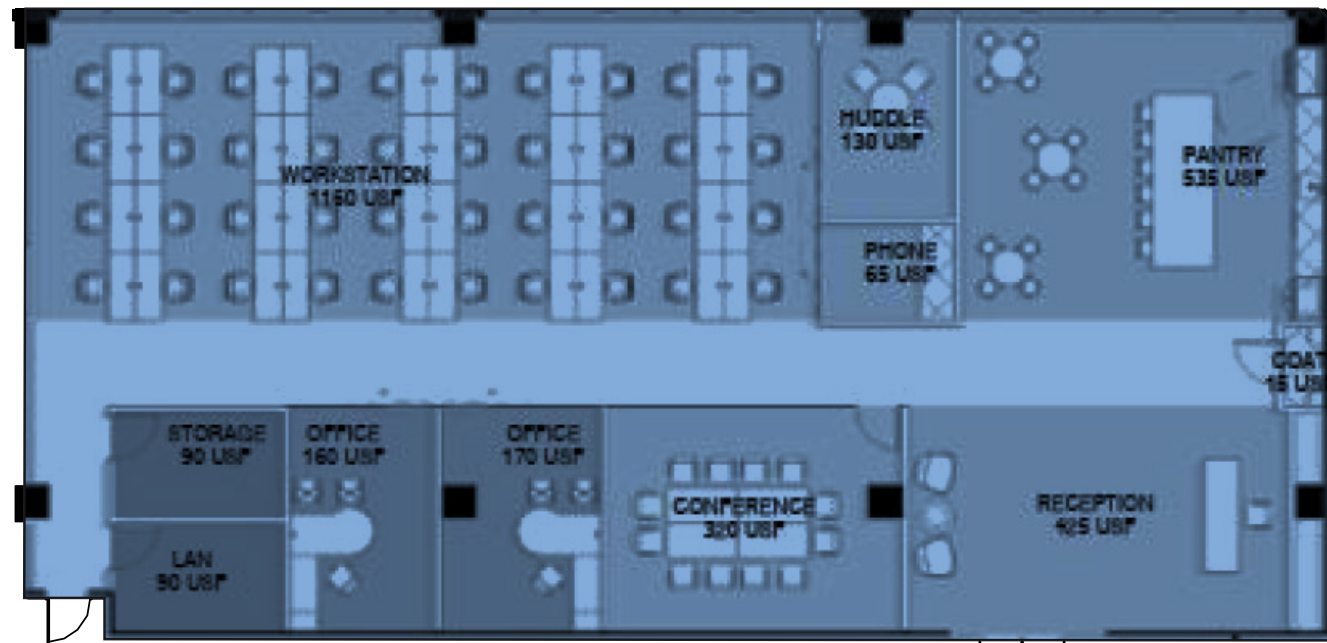
FLOOR PLANS

SUITE 410 8,327 SF



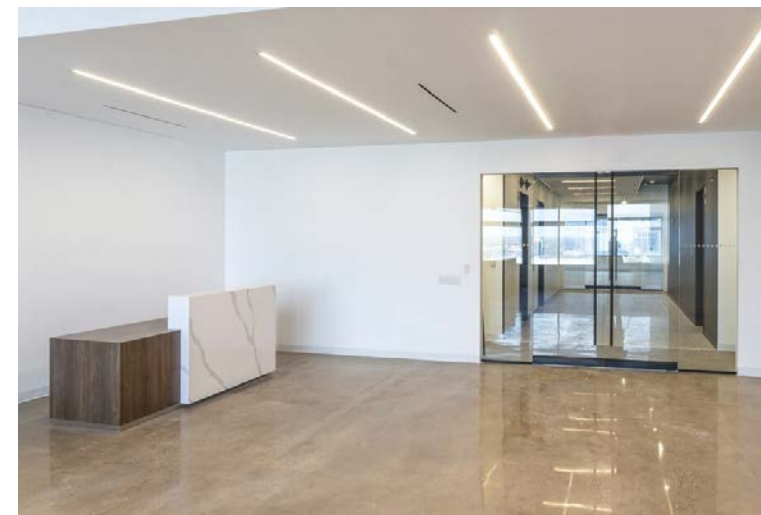
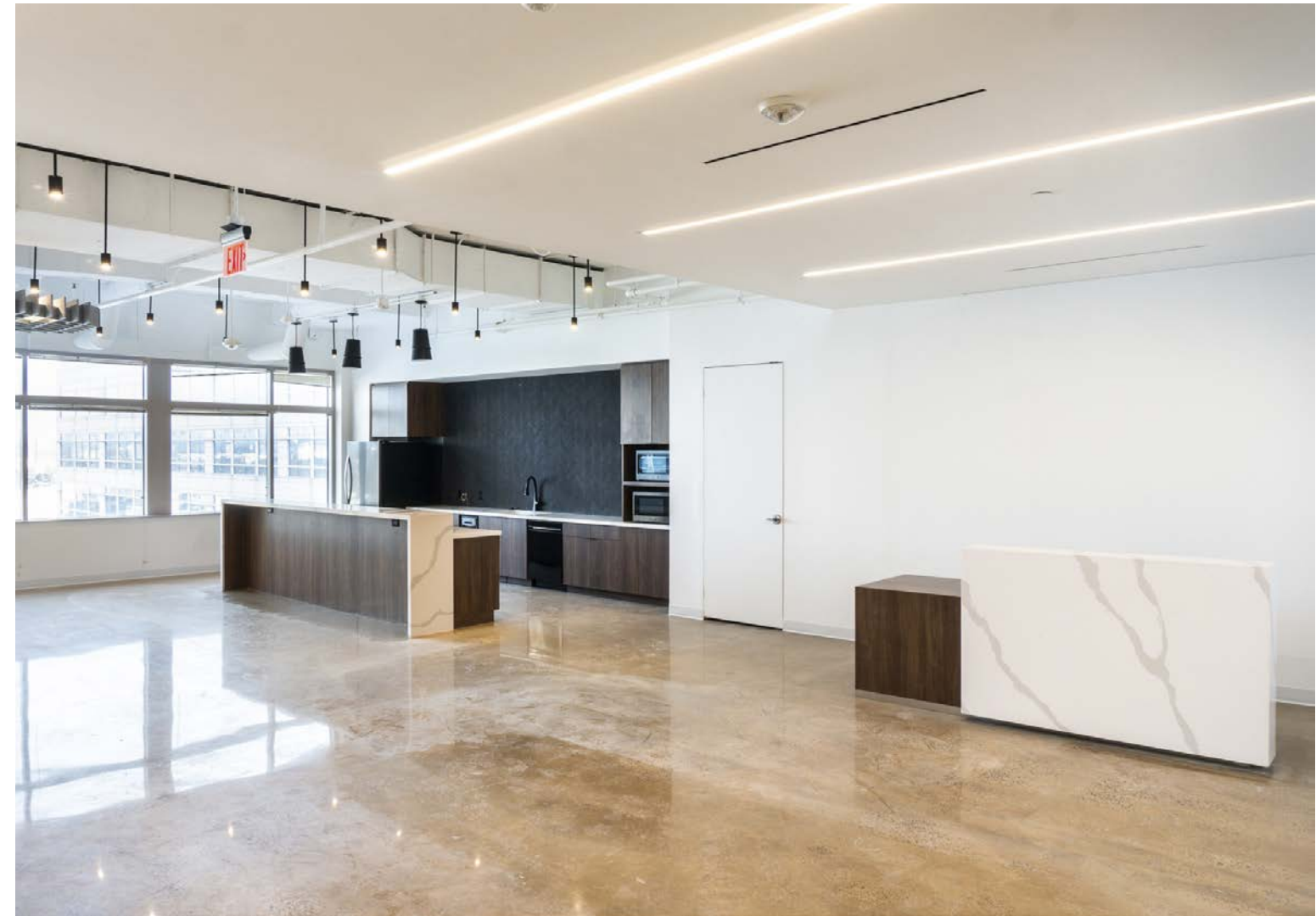
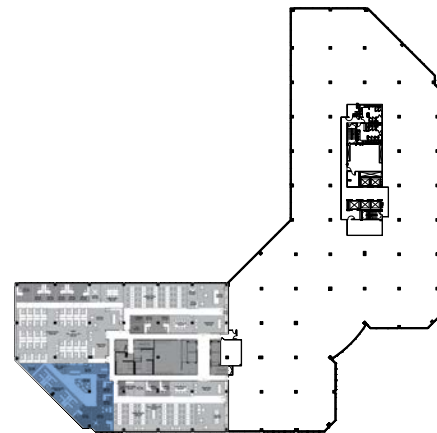
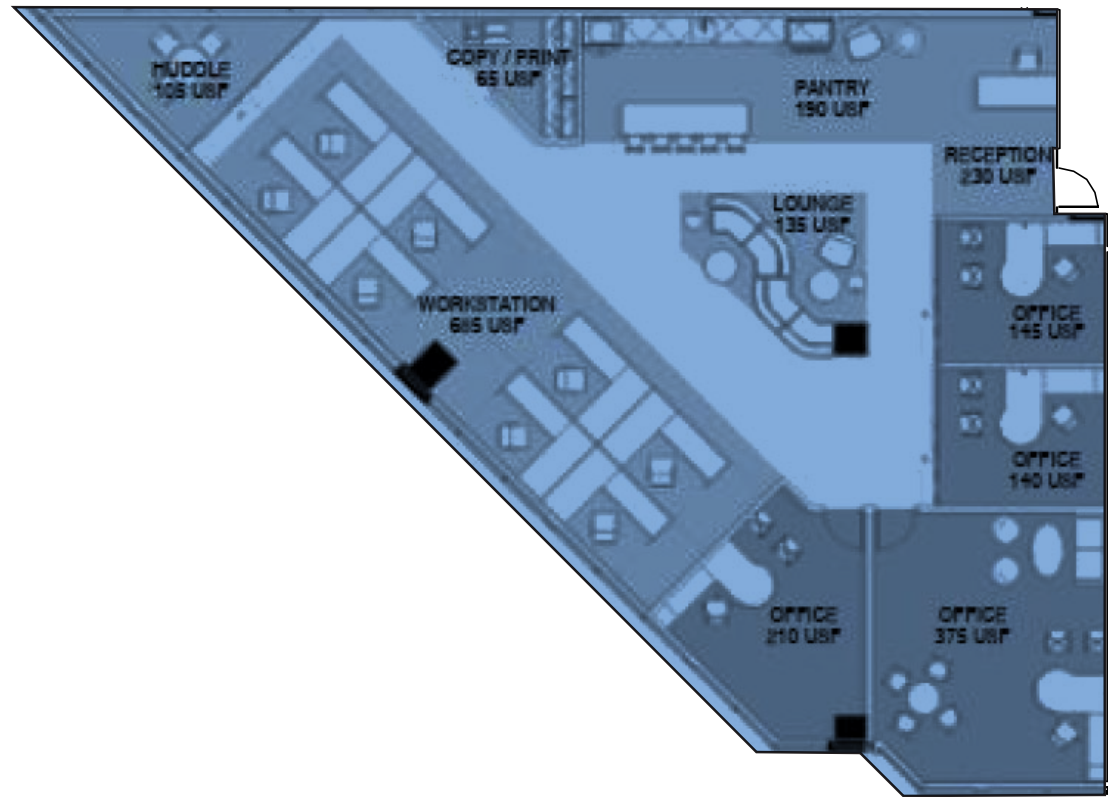
FLOOR PLANS

SUITE 420 5,310 SF



FLOOR PLANS

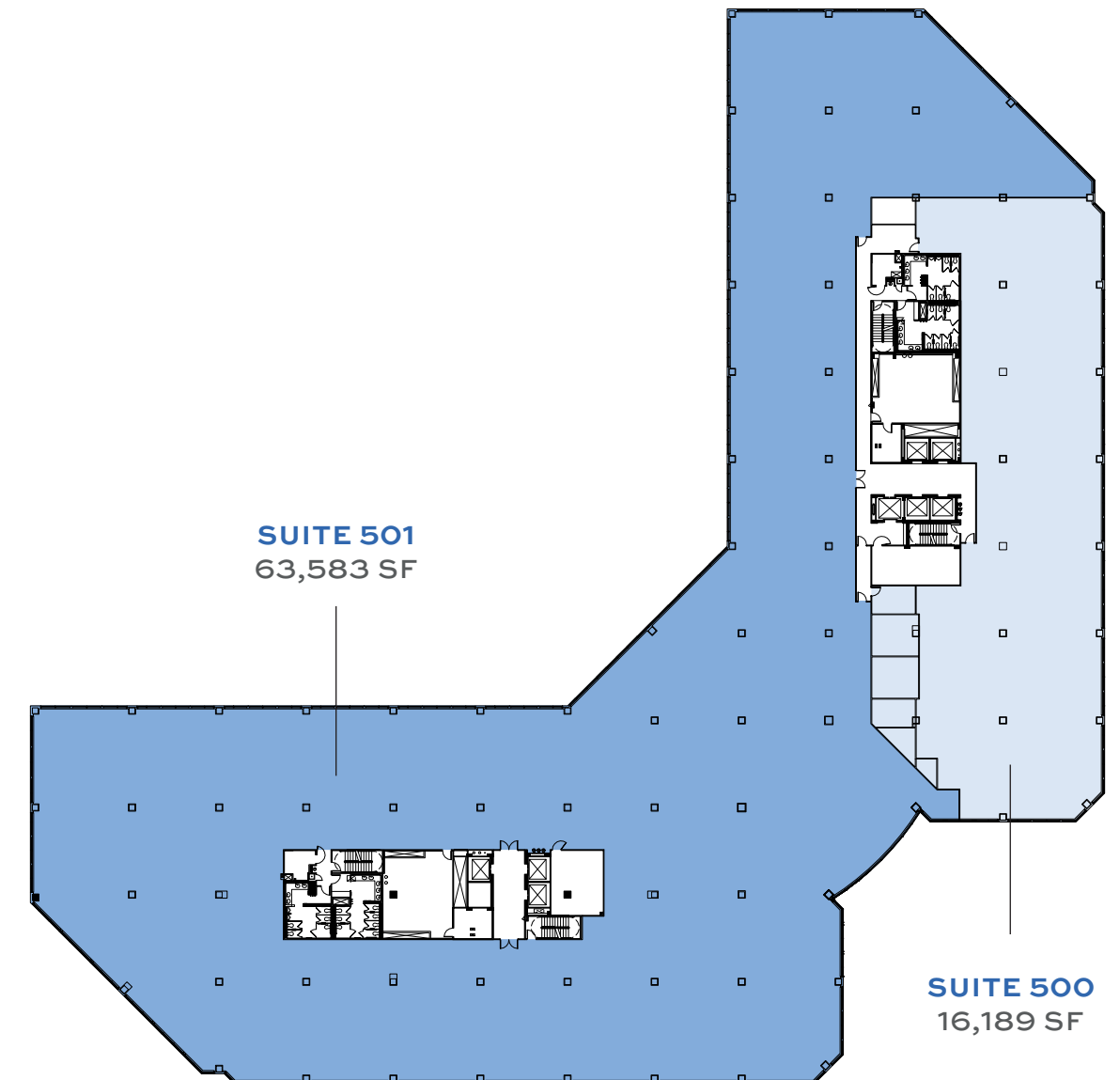
SUITE 430 4,070 SF



FLOOR PLANS



5TH FLOOR FULL FLOOR | 79,772 SF



The logo features a stylized blue '7' icon to the left of the text 'sky SEVEN'. 'sky' is in a lowercase sans-serif font, and 'SEVEN' is in an uppercase sans-serif font.

sky SEVEN



TIM SUMMERS | tim.summers@cushwake.com

WILL THOMAS | williamson.thomas@cushwake.com

NATE MARSHALL | nathan.marshall@cushwake.com

