

FOR LEASE

117-143 SF | \$1,575-\$1,900/MO. FSG

Assembly Executive Offices at the Grove

2838 NW Crossing Dr., Bend, OR 97703



PROPERTY DETAILS

- Suite 205:** 143 SF | \$1,575/Mo.
Available June 1st
- Suite 215:** 117 SF | \$1,900/Mo.
Available July 1st
- Zoning:** Commercial Limited (CL)
- Year Built:** 2020
- Parking:** Ample onsite parking

HIGHLIGHTS

- Executive offices in the heart of NorthWest Crossing
- Access to shared kitchenette, copy/printer, multiple conference rooms, lounge areas and a balcony
- Excellent frontage on NW Crossing Drive
- Traffic counts exceed 9,000 AADT on Mt. Washington Drive
- Surrounded by schools, businesses and residential neighborhoods

Jay Lyons, SIOR, CCIM | Grant Schultz, SIOR, CCIM

600 SW Columbia St., Ste. 6100 | Bend, OR 97702

541.383.2444 | www.CompassCommercial.com

COMPASS
COMMERCIAL

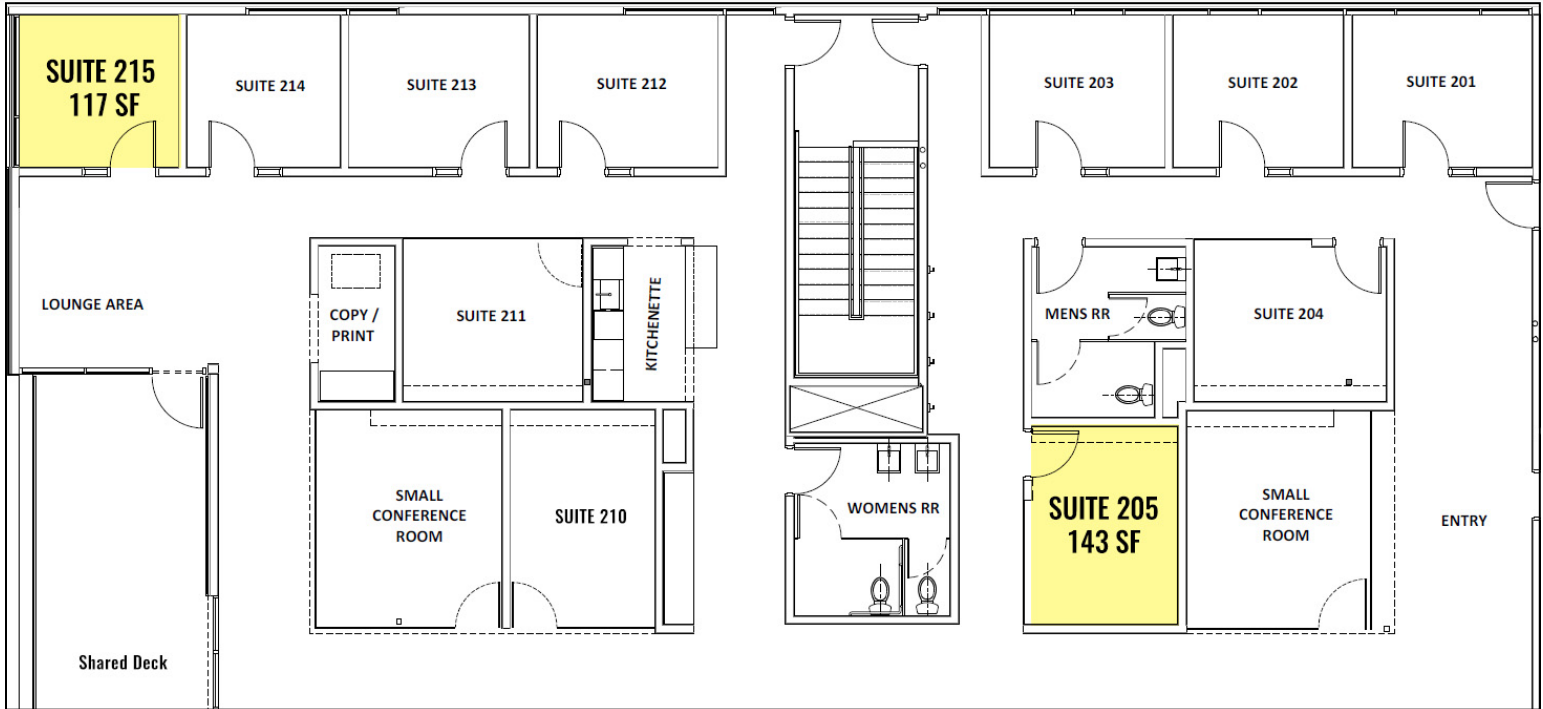
REAL
ESTATE
SERVICES

FOR LEASE

117-143 SF | \$1,575-\$1,900/MO. FSG

Assembly Executive Offices at the Grove

2838 NW Crossing Dr., Bend, OR 97703



Brokers are licensed in the state of Oregon. This information has been furnished from sources we deem reliable, but for which we assume no liability. This is an exclusive listing. The information contained herein is given in confidence with the understanding that all negotiations pertaining to this property be handled through Compass Commercial Real Estate Services. All measurements are approximate.



Jay Lyons, SIOR, CCIM
 Partner, Principal Broker
 Cell 541.410.6519
 jlyons@compasscommercial.com



Grant Schultz, SIOR, CCIM
 Broker
 Cell 541.480.9873
 gschultz@compasscommercial.com

COMPASS COMMERCIAL
 REAL ESTATE SERVICES