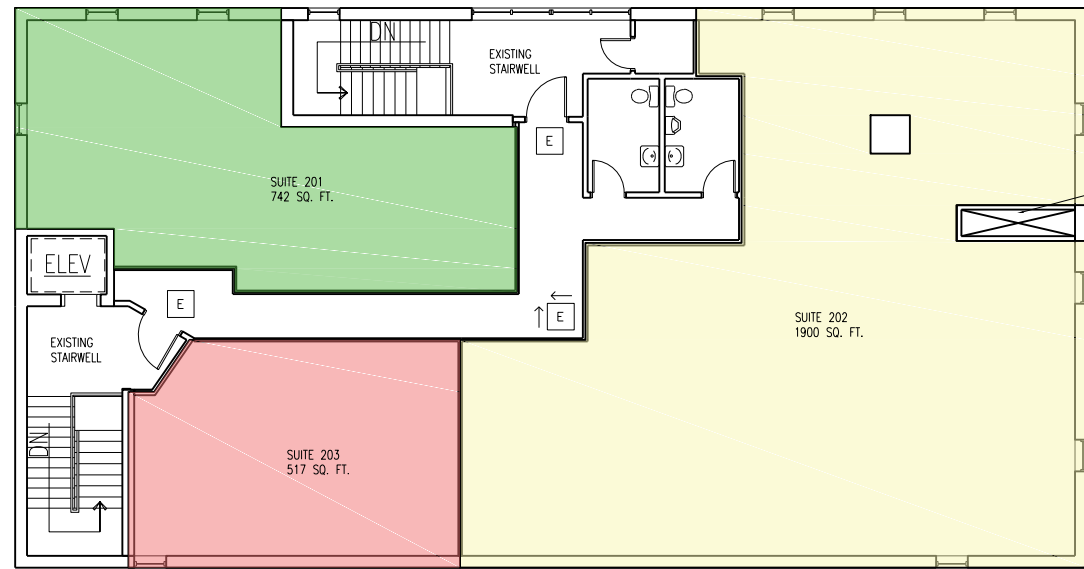


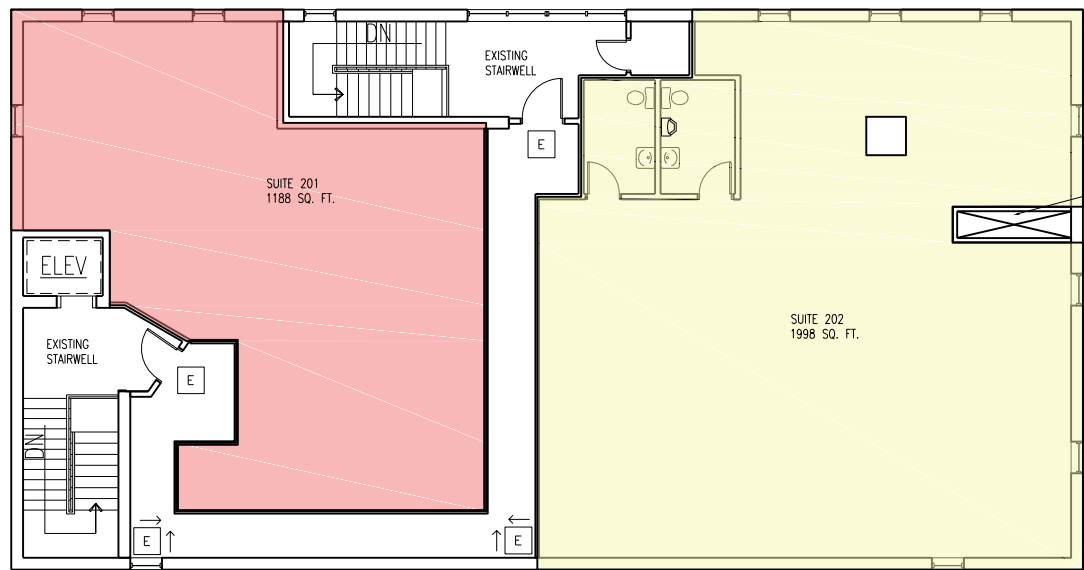
SECOND FLOOR POTENTIAL LAYOUT A

SECOND FLOOR:
 NET LEASABLE AREA 3329 SQ. FT.
 SUITE 201 = 742 SQ. FT.
 SUITE 202 = 2000 SQ. FT.
 SUITE 203 = 587 SQ. FT.
 (SQ. FT. CALCULATED BY EXTERIOR WALL
 TO INTERIOR CENTERLINE)



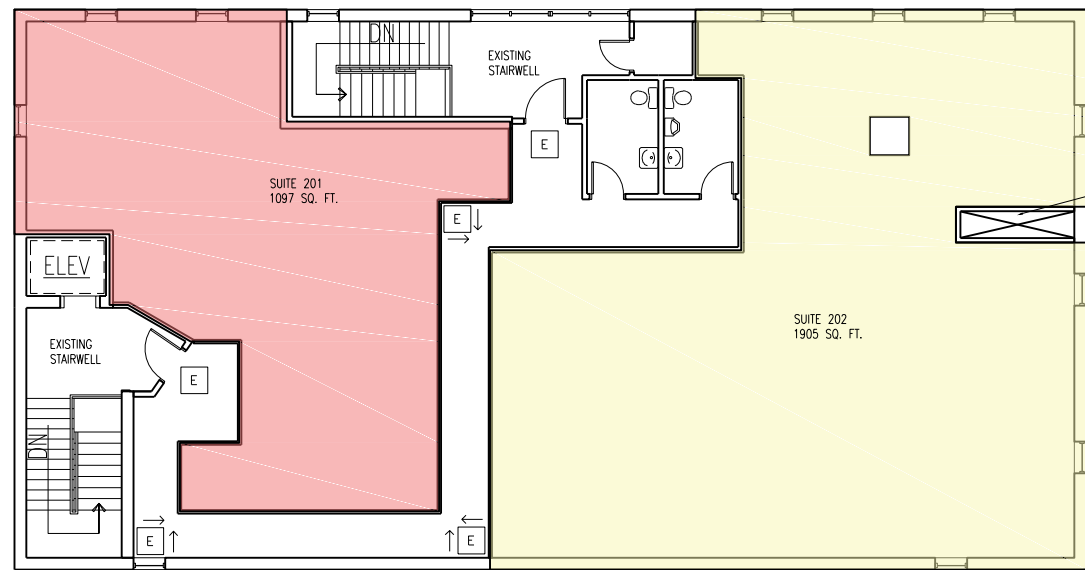
SECOND FLOOR POTENTIAL LAYOUT B

SECOND FLOOR:
 NET LEASABLE AREA 3159 SQ. FT.
 SUITE 201 = 742 SQ. FT.
 SUITE 202 = 1900 SQ. FT.
 SUITE 203 = 517 SQ. FT.
 (SQ. FT. CALCULATED BY EXTERIOR WALL
 TO INTERIOR CENTERLINE)



SECOND FLOOR POTENTIAL LAYOUT C

SECOND FLOOR:
 NET LEASABLE AREA 3186 SQ. FT.
 SUITE 201 = 1188 SQ. FT.
 SUITE 202 = 1998 SQ. FT.
 (SQ. FT. CALCULATED BY EXTERIOR WALL
 TO INTERIOR CENTERLINE)



SECOND FLOOR POTENTIAL LAYOUT D

SECOND FLOOR:
 NET LEASABLE AREA 3002 SQ. FT.
 SUITE 201 = 1097 SQ. FT.
 SUITE 202 = 1905 SQ. FT.
 (SQ. FT. CALCULATED BY EXTERIOR WALL
 TO INTERIOR CENTERLINE)

**STELLING & ASSOCIATES
 ARCHITECTS, LTD.**

181 W. CHESTNUT STREET, P.O. BOX 506
 BURLINGTON, WI. 53105
 PH: (262) 763-8725 FX: (262) 763-1971

**TWENTY LAKE HOLDINGS
 197 W CHESTNUT ST
 BURLINGTON, WI 53105**

**SECOND FLOOR SUITE
 OPTIONS BASED ON
 EGRESS REQUIREMENTS**

#16012
 5-11-2016

A101