

OFFICE-RETAIL FOR LEASE

425 E Eisenhower Blvd, Suite No. 2 | Loveland, CO 80537

Offering Highlights:

- 2,093 square feet
- Private offices: 5 main floor, 1 second floor
- Large conference room on second floor
- 1/3 of off-street parking for Suite No. 2
- Zoning: B-Developing Business

Lease Details:

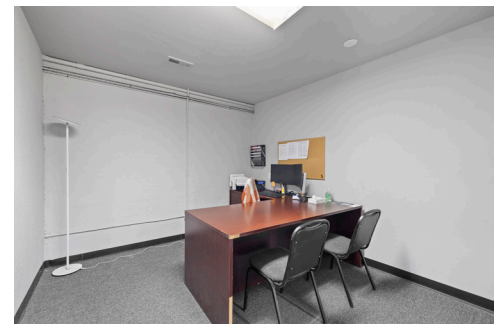
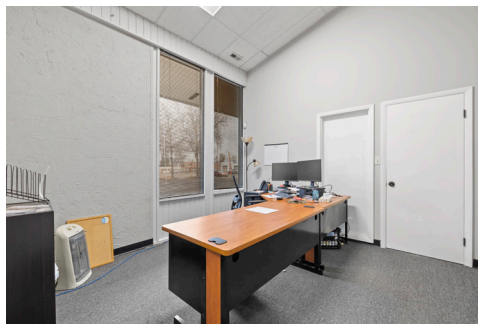
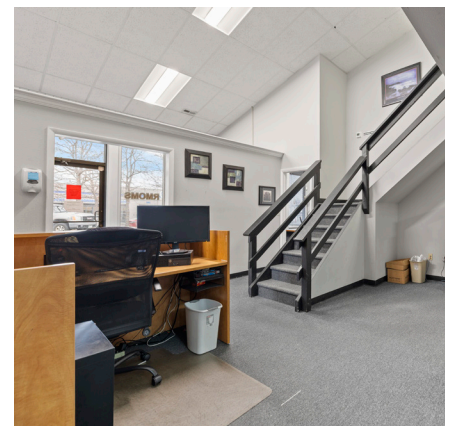
- Rent: \$13.50 per square foot NNN
- NNN: \$4.28 per square foot
(\$3.49/SF taxes + \$0.79/SF insurance)

Utilities:

- 37.47% of building's Electricity, Gas, Water-Sewer billed to Tenant through monthly expenses

Trash & Snow Removal:

- Trash: Tenant to take out service and pay
- Snow Removal: Tenant in Suite No. 1 contracts service for the entire building and is reimbursed by Landlord



Rhett Strom
Commercial Broker | Partner

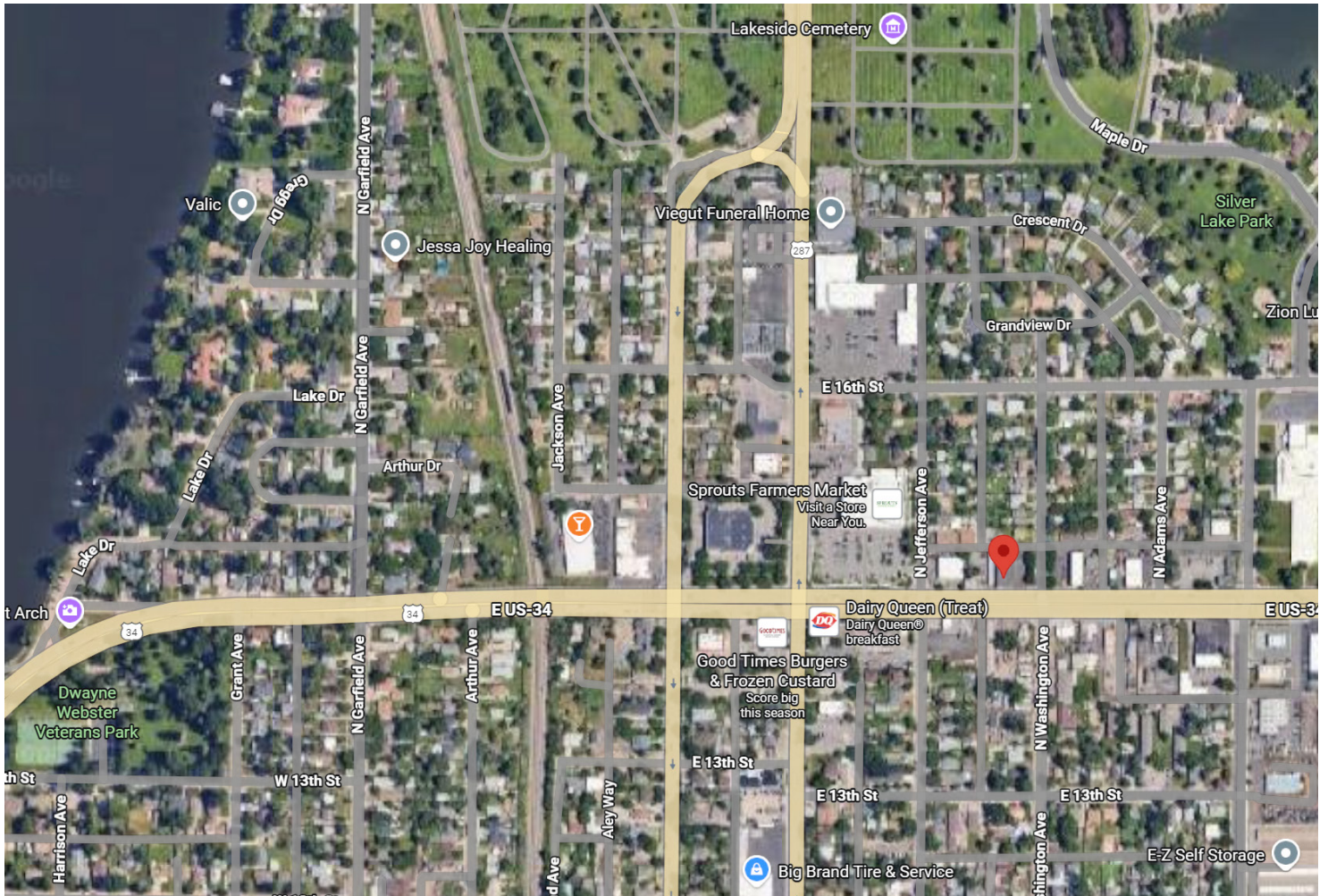
970.692.4454 Mobile
rstrom@thegroupinc.com
www.TheGroupInc.com

The information listed above has been obtained from sources we believe to be reliable, however, we accept no responsibility for its accuracy. 5.26.2026



OFFICE-RETAIL FOR LEASE

425 E Eisenhower Blvd, Suite No. 2 | Loveland, CO 80537



Rhett Strom

Commercial Broker | Partner

970.692.4454 Mobile

rstrom@thegroupinc.com

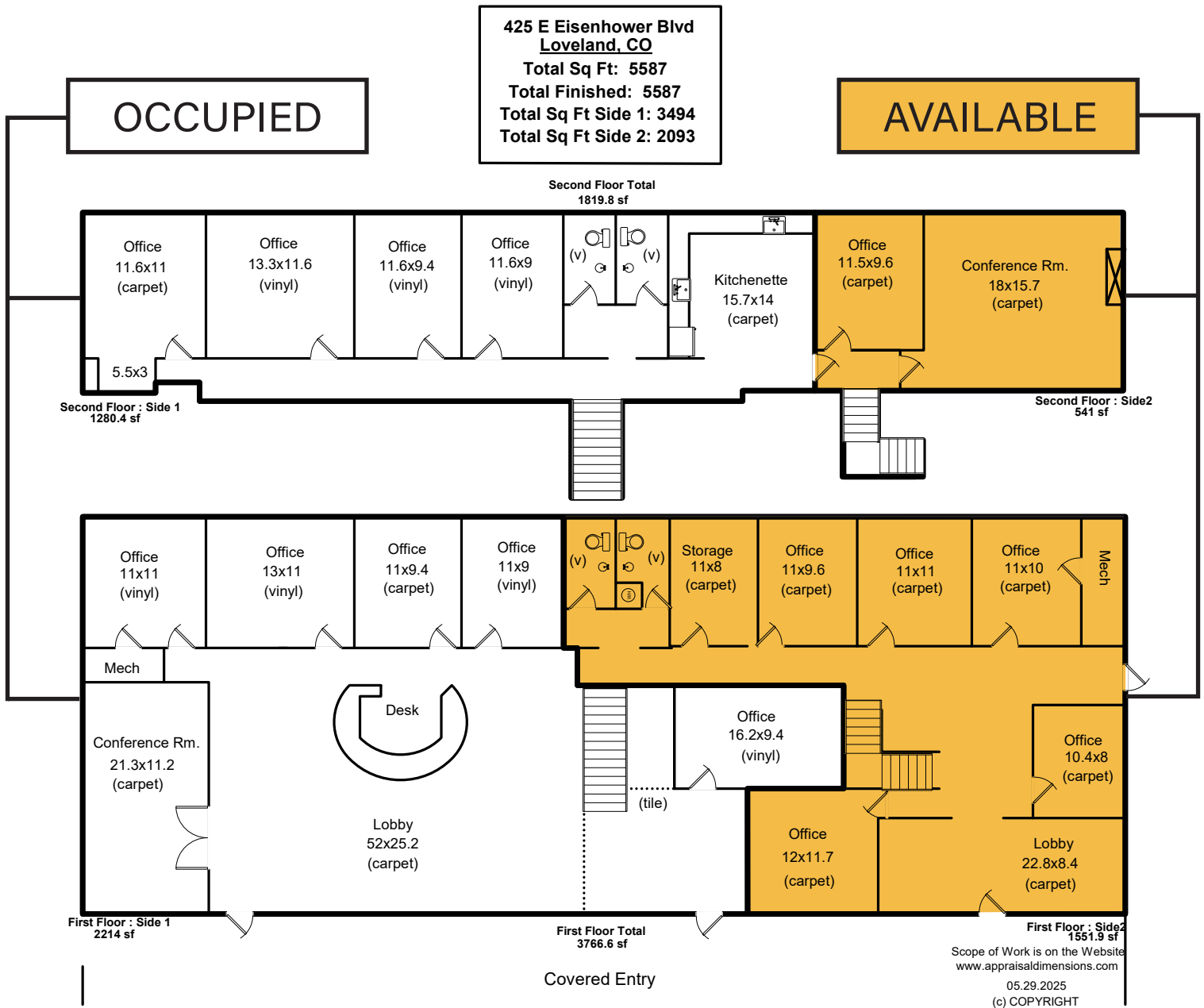
www.TheGroupInc.com

The information listed above has been obtained from sources we believe to be reliable, however, we accept no responsibility for its accuracy. 5.26.2026



OFFICE-RETAIL FOR LEASE

425 E Eisenhower Blvd, Suite No. 2 | Loveland, CO 80537



Rhett Strom
Commercial Broker | Partner

970.692.4454 Mobile
rstrom@thegroupinc.com
www.TheGroupInc.com

The information listed above has been obtained from sources we believe to be reliable, however, we accept no responsibility for its accuracy. 5.26.2026

