

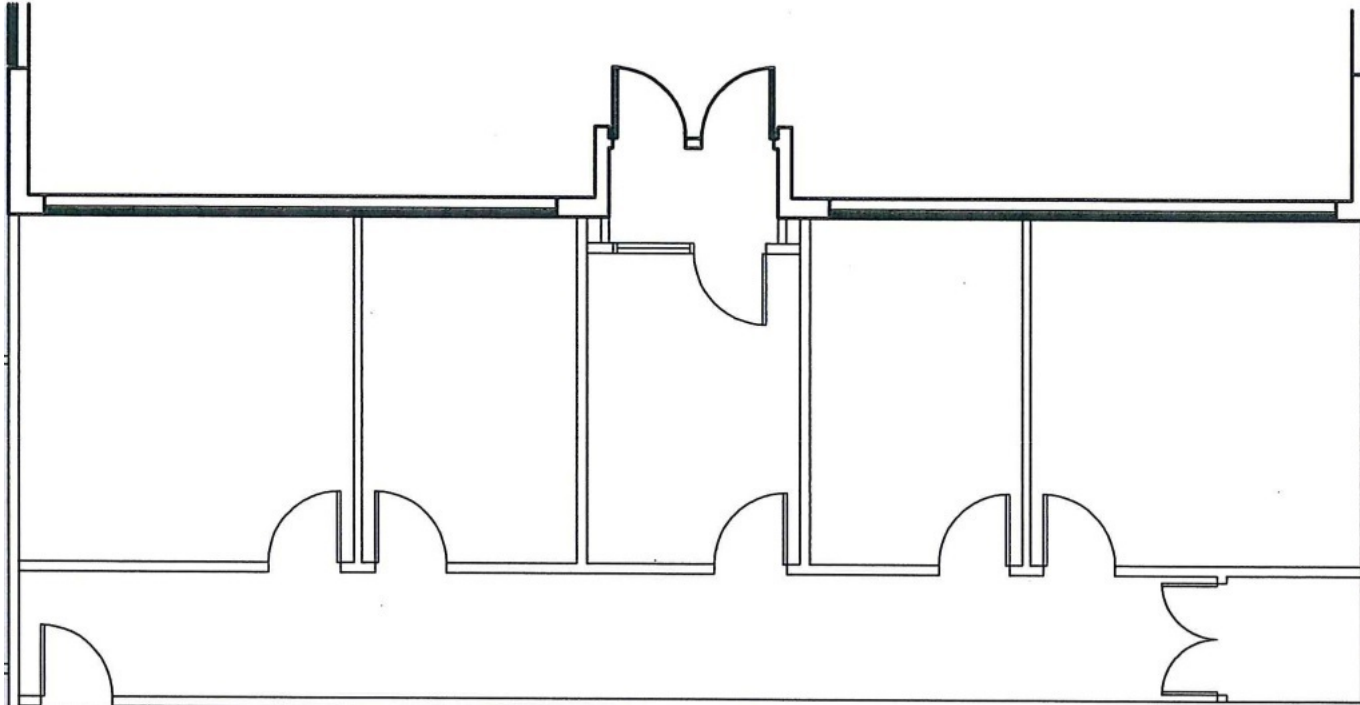
# SUITE B | 1,200 SF

1805 N MILL ST | NAPERVILLE



## SPACE NOTES

- 4 Private Offices
- Direct Suite Access
- Access to Common Area Kitchen and Lounge
- Common Area Restrooms
- Tenant Controlled HVAC



**RYAN MOEN**

630.480.6346

[RMoen@VersaRES.com](mailto:RMoen@VersaRES.com)

**JOHN MILLNER**

630.480.6342

[JMillner@VersaRES.com](mailto:JMillner@VersaRES.com)

2700 INTERNATIONAL DRIVE  
WEST CHICAGO, IL 60185  
630.480.6413

EXCLUSIVELY LISTED BY

**VERSA**  
REAL ESTATE SERVICES