



60 Carolyn Boulevard

Farmingdale, NY

Building Size

13,960 sf

Plot Size

1.05 Acres

Sale Price

\$4,500,000 / \$322.35 psf

Taxes

\$43,756.71 / \$3.13 psf

Occupancy

4th Quarter 2026

Property Type

Industrial / Flex

Property Highlights

- 7,660 sf office / flex space
- 6,300 sf warehouse/manufacturing space
- 16' ceiling height
- 2 drive-in doors
- 1 loading dock
- Oil heat
- 400 amps power
- Sprinklers
- Sewers
- Ample employee parking and private executive parking lot
- **New roof installed in 2026 with warrantee**

For information, please contact exclusive brokers:

Daniel Gazzola

Managing Director

t 631-673-0829

daniel.gazzola@nmrk.com

Chuck Tabone, SIOR

Executive VP-Managing Director

t 631-673-0803

charles.tabone@nmrk.com

290 Broadhollow Road, Suite 103E

Melville, NY 11747

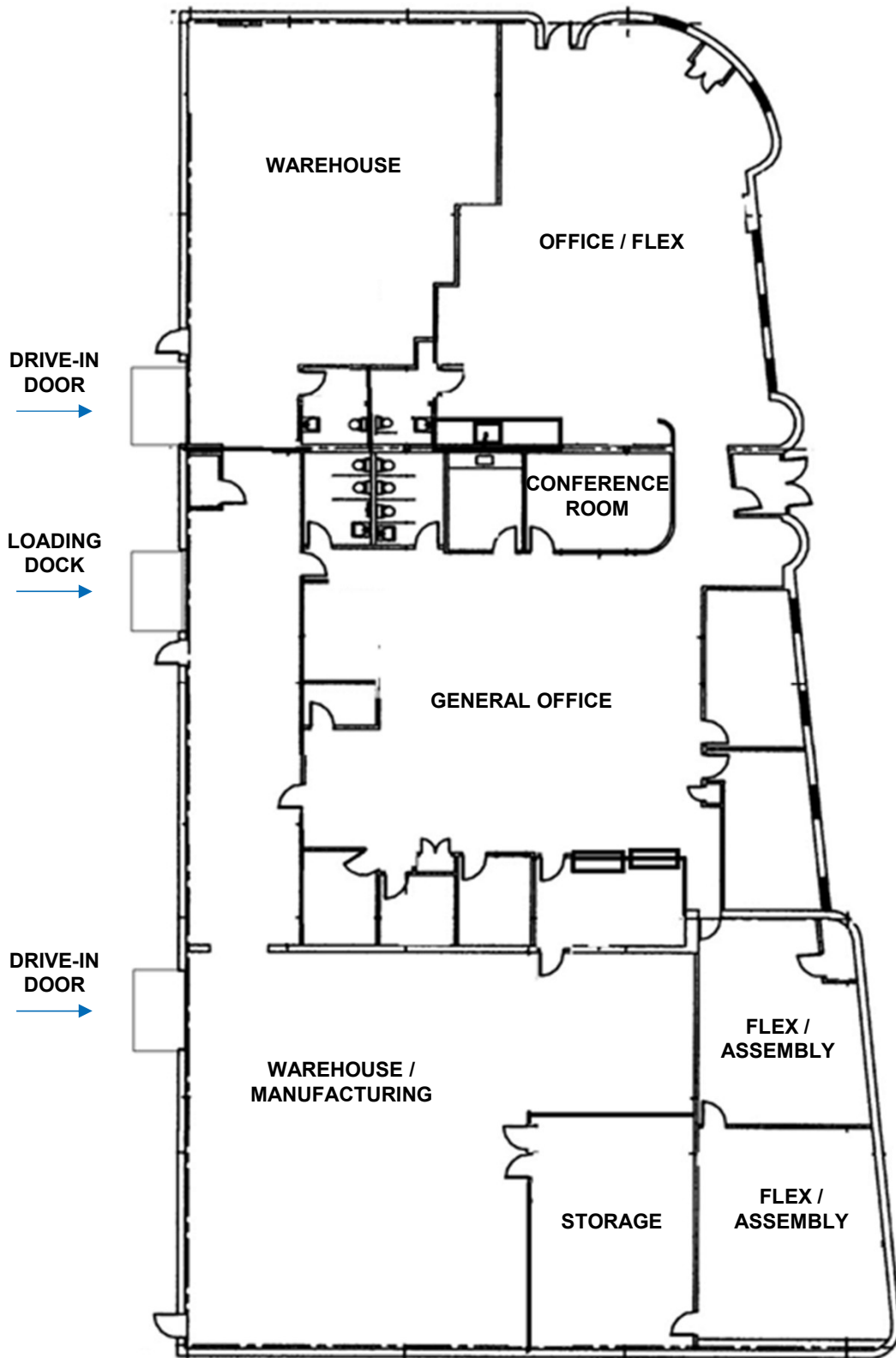


[nmrk.com](https://www.nmrk.com)

NEWMARK

The information contained herein has been obtained from sources deemed reliable but has not been verified and no guarantee, warranty or representation, either express or implied, is made with respect to such information. Terms of sale or lease and availability are subject to change or withdrawal without notice.

Floor Plan



Floor Plan

