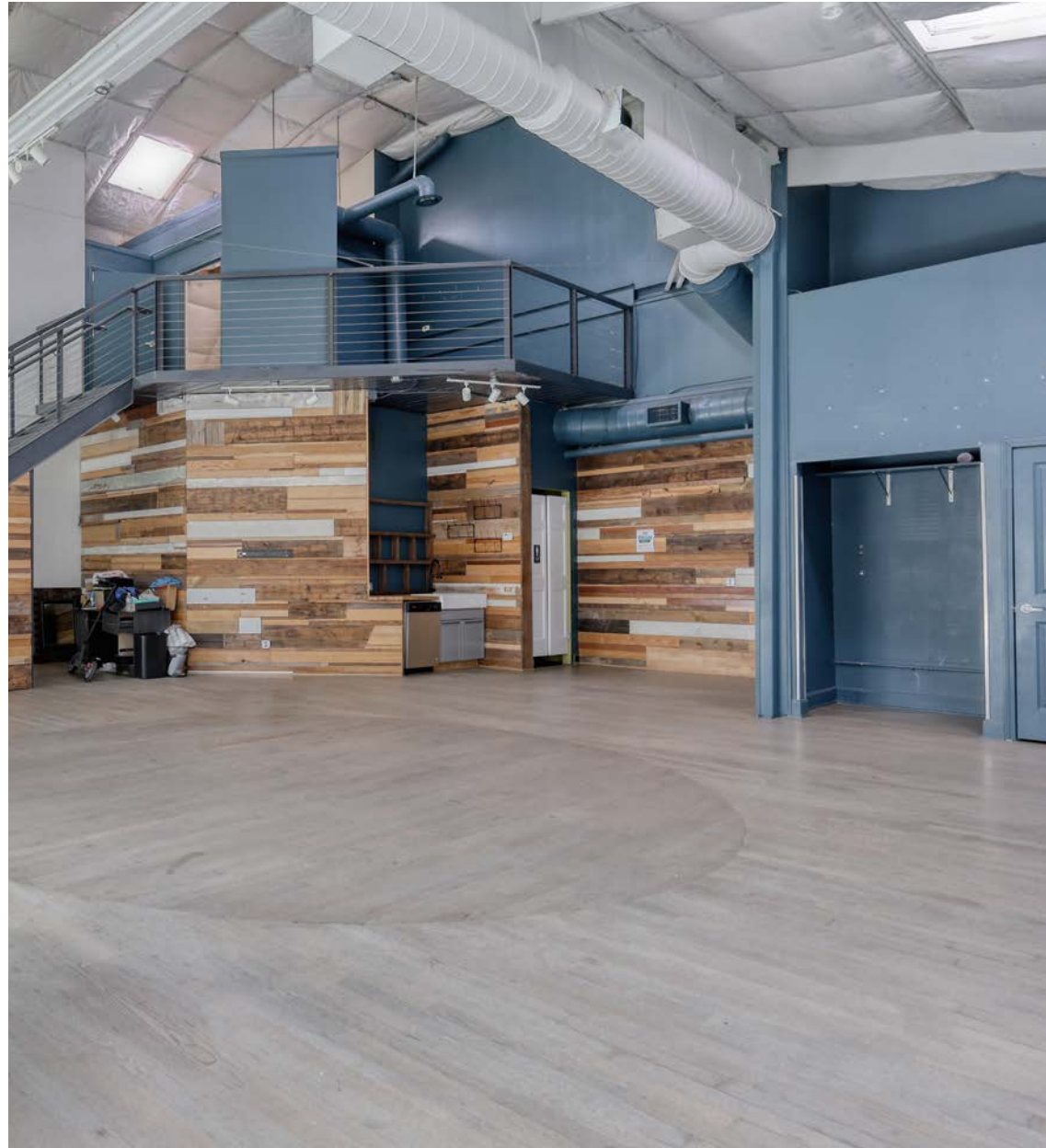




1,962 RSF AVAILABLE OFFICE SPACE
1145 ZONOLITE RD | SUITE 7 | ATLANTA GA 30306

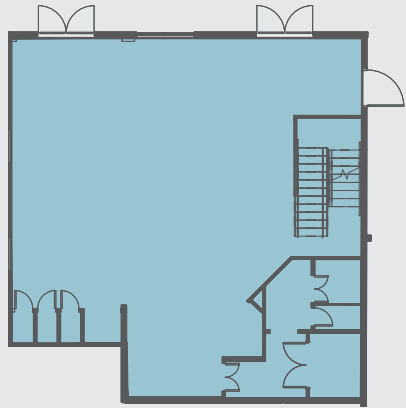
1145
ZONOLITE RD



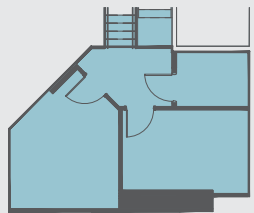
1,962 RSF AVAILABLE

- Ample outdoor/community space
- Adjacent to Zonolite Park
- Free Parking at a ratio of 3:1000

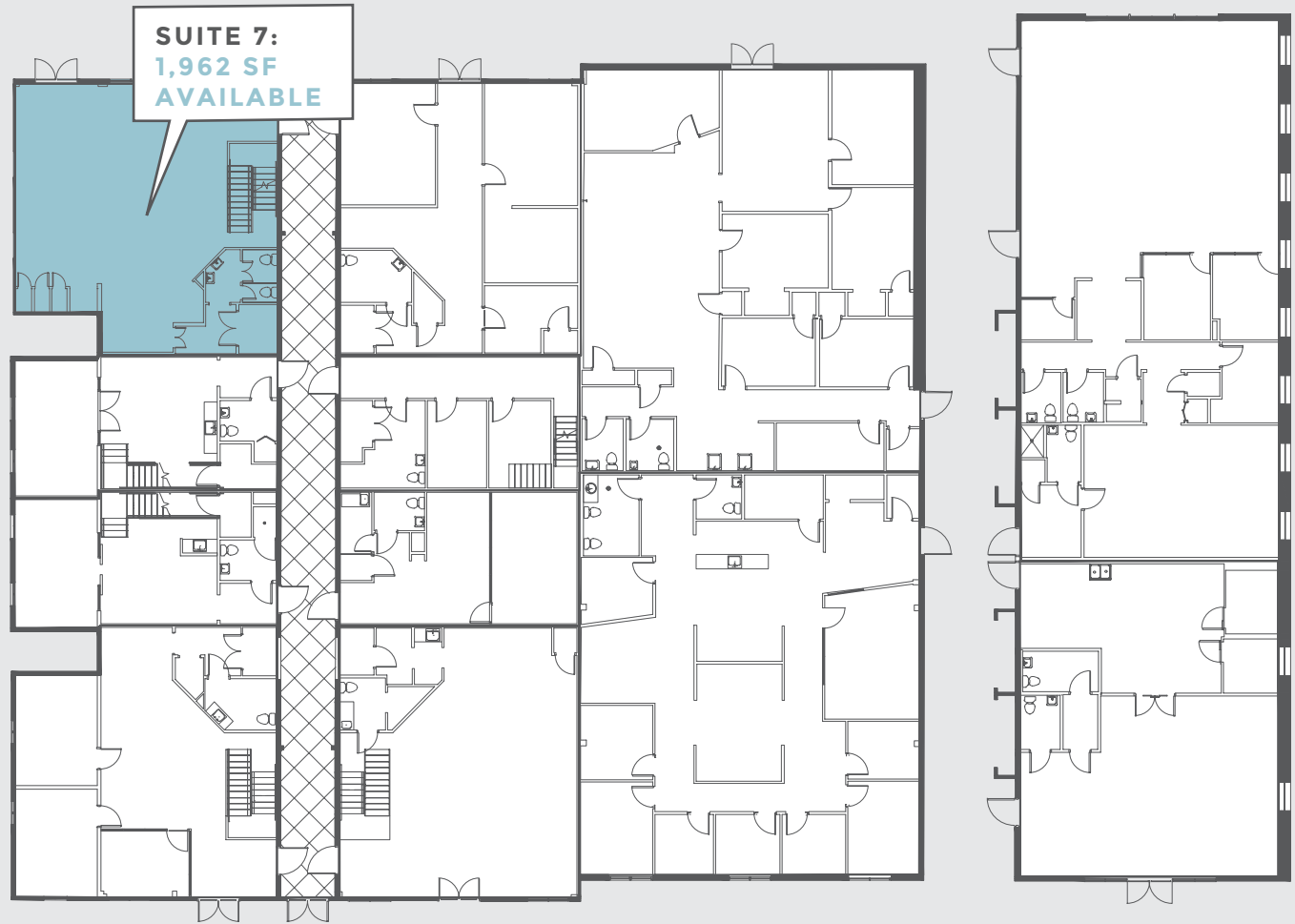




MAIN FLOOR (1,519 RSF)



MEZZANINE (443 RSF)



SUITE 7:
1,962 SF
AVAILABLE



1145
ZONOLITE RD



- EMORY AREA RESTAURANTS**
- Wagaya
 - Double Zero
 - The General Muir
 - Chick'nCone
 - Freshëns
 - Ms. Iceys Kitchen
 - BORUBORU
 - Falafel King
 - Chipotle Mexican Grill
 - Panera Bread
 - SriThai



SCHEDULE A TOUR TODAY BY CONTACTING:

ELLIS MURRAY
404.400.6633
ellis.murray@capitalre.com

BENNETT GOTTLIEB
404.400.7192
bennett.gottlieb@capitalre.com

JOHN P. THORNTON
404.400.7451
john.thornton@capitalre.com

1145
ZONOLITE RD