



Lakewood Square Shopping Center

Currently available is a 3,632ft² warehouse space in City of Lakewood Central Business District (CBD). This light industrial warehouse features an open space plane with 18' clear ceiling height, a 12' roll-up door, on restroom, one man door and excellent monument signage.

This commercial center is located in the heart of Lakewood, off busy Bridgeport Way Dr. and Gravelly Lake Dr. SW with traffic counts of 38,000 vehicles per day. The parking lot has been recently been seal coated and striped and offers generous lighted parking. Easy access from both Mt. Tacoma Dr and Lake Grove St. Monument signage is available at each entrances.

Property Overview

- 12' roll-up door
- Man door
- Clear height approximately 18'
- Monument signage in front of building
- Ample, lighted parking
- Zoning: CBD
- Available now: 3,632ft²
- Lease rate: \$1.08/ft²/mo NNN

DISCLAIMER: The above information has been secured from sources believed to be reliable, however, no representations are made to its accuracy. Prospective tenants or buyers should consult their professional advisors and conduct their own independent investigation. Properties are subject to change in price and/or availability without notice.



EXTERIOR PHOTOS



INTERIOR PHOTOS



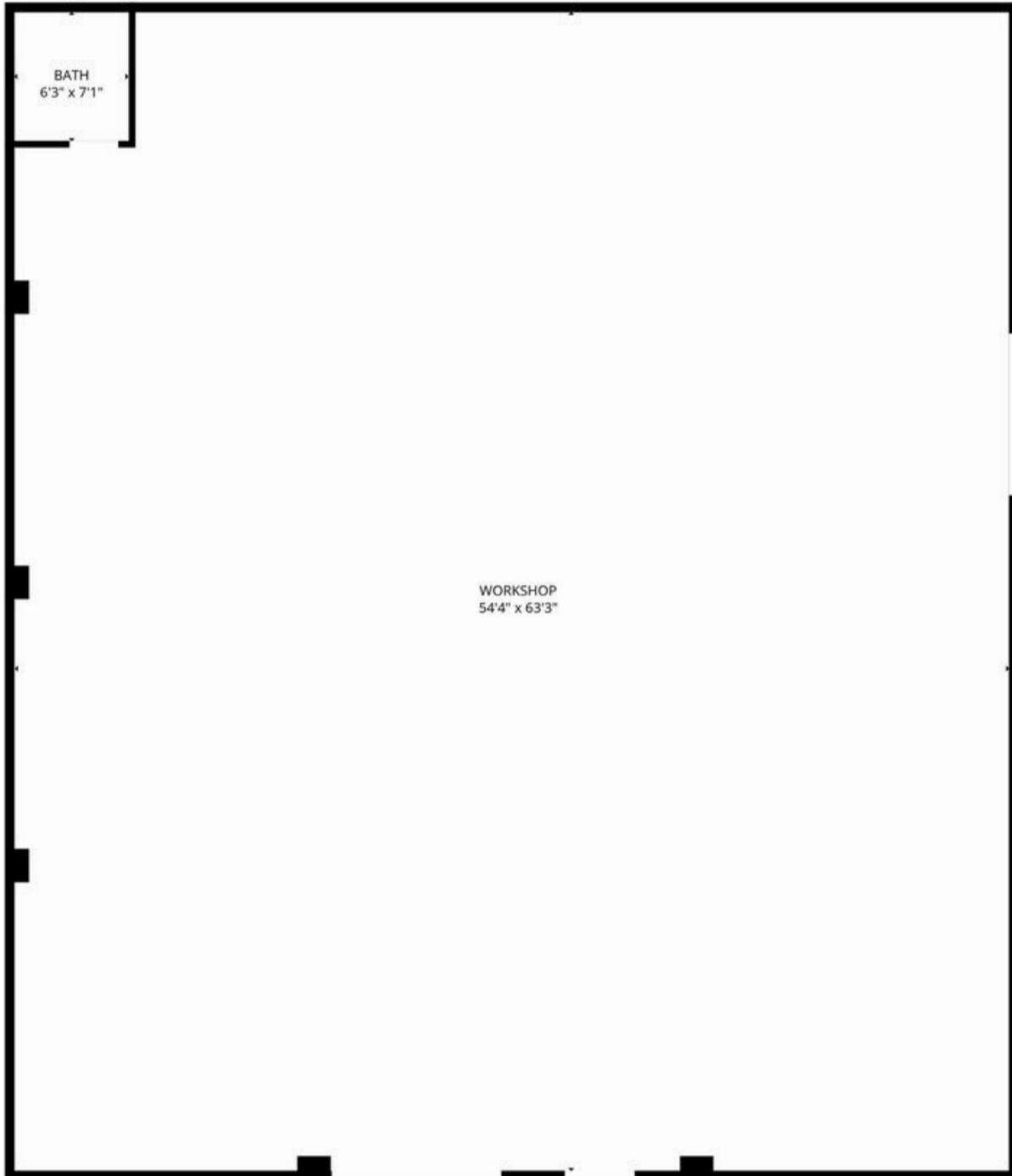
11120 Gravelly Lake Dr SW Ste 2
Lakewood, Washington 98499
johnson-commercial.com (253) 589-9999

Margot Johnson
margot@johnson-commercial.com
O: (253) 589-9999 C: (253) 209-9998

Tim Johnson
timothy@johnson-commercial.com
O: (253) 589-9999 C: (253) 209-9999

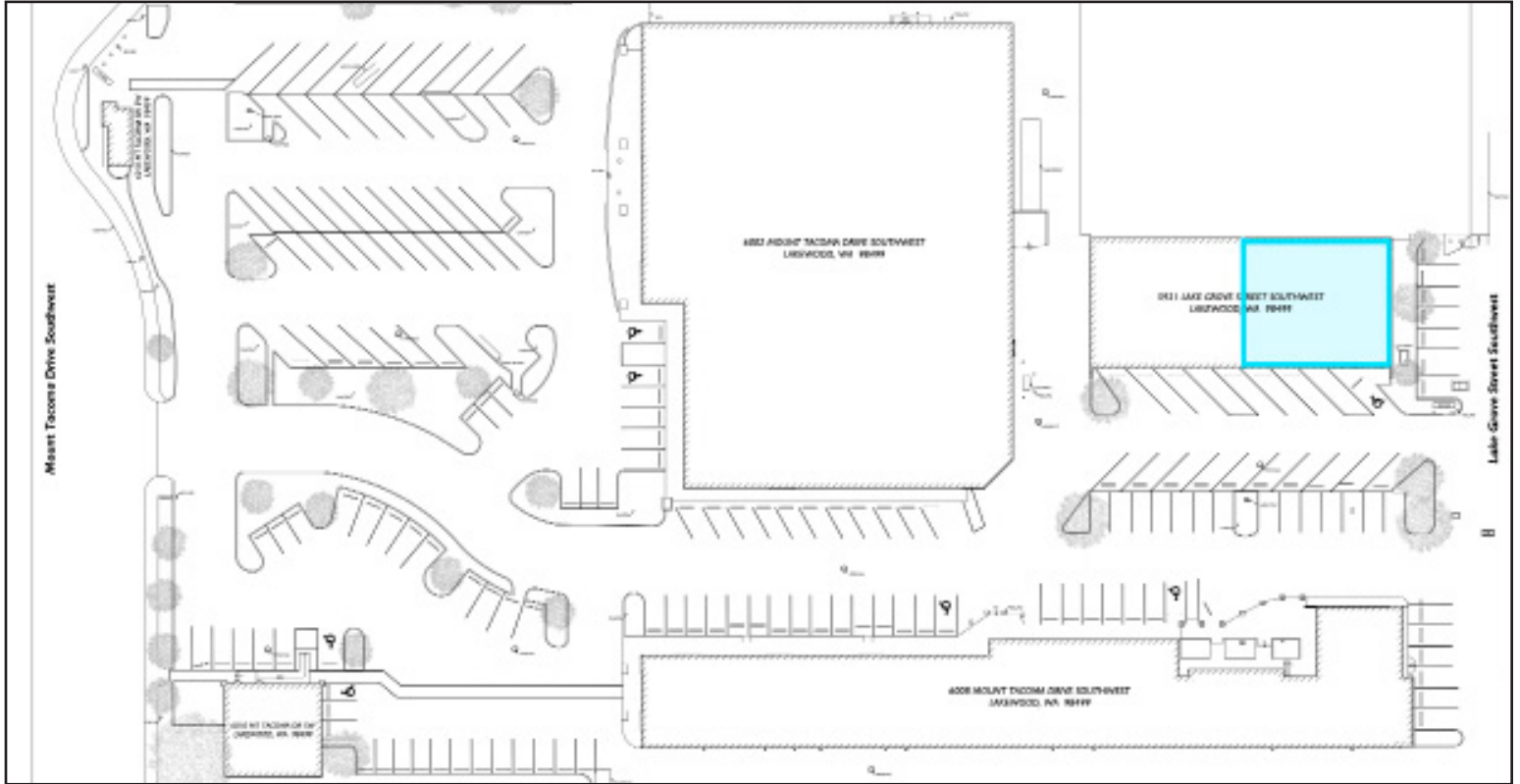


FLOOR PLAN





SITE PLAN



AREA MAP



11120 Gravelly Lake Dr SW Ste 2
Lakewood, Washington 98499
johnson-commercial.com (253) 589-9999

Margot Johnson
margot@johnson-commercial.com
O: (253) 589-9999 C: (253) 209-9998

Tim Johnson
timothy@johnson-commercial.com
O: (253) 589-9999 C: (253) 209-9999