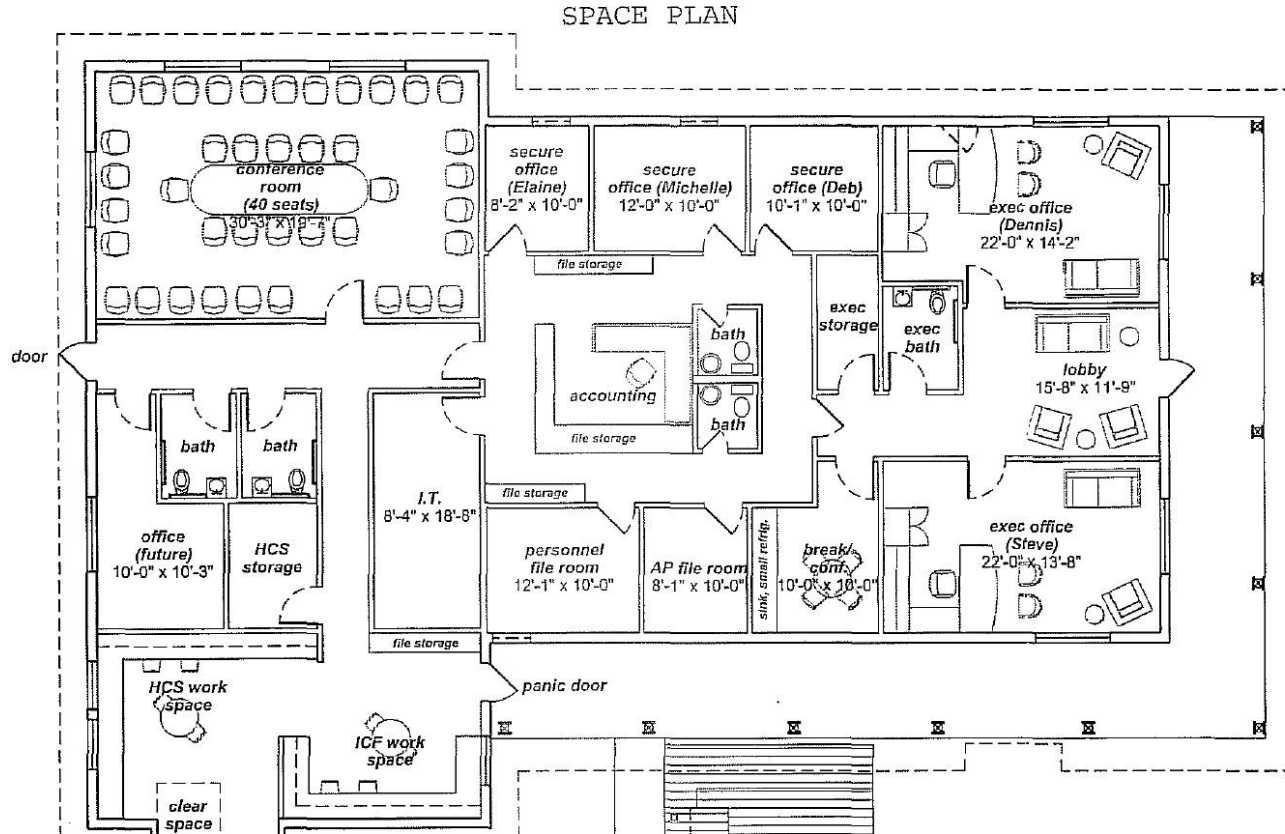


1110 W William Cannon Drive

Building 2



Floorplan



Financials

- Lease Term: 3 to 7 years
- Base Rent: \$15 per square foot
- NNNs: \$8 per square foot
- Available Now
- Negotiable TI based on lease term and tenant financials
 - Possible to divide in to 2 spaces, or consolidate with Building 1 for ~8,400 sqft

Cannon Park



- Strong medical corridor along William Cannon
- Convenient to MoPac or 35
- Ample Parking and easy road access
- Marquis sign
- 25,369 vehicles per day traffic
- Other tenants include medical practices, pediatrician, dentist, acupuncture, massage therapist



Option 2 - Open Space



View 1

Building 2: Open Office Concept.
Co-Working



Building 2: Open office concept

View 2



Building 2: Coffee working

View 3



Building 2: Open Office Concept. Group Workbench

View 4



View 5



Building 2: Private meeting space

View 6



View 7 - Top View



View 8 - Aerial Perspective

Option 2 - Hybrid Space



Building 2: Hybrid Concept. Private and group workspaces

View 1



Building 2: Hybrid Concept. Collaborative space areas

View 2



Building 2: Private meeting spaces

View 3



Building 2: Hybrid Concept. Private workstations

View 4



Building 2: Hybrid Concept. Bathroom Area

View 5



Building 2: Hybrid Concept. Open meeting room

View 6



View 7 - Top View



View 8 - Aerial Perspective

Option 3 - Medical Center



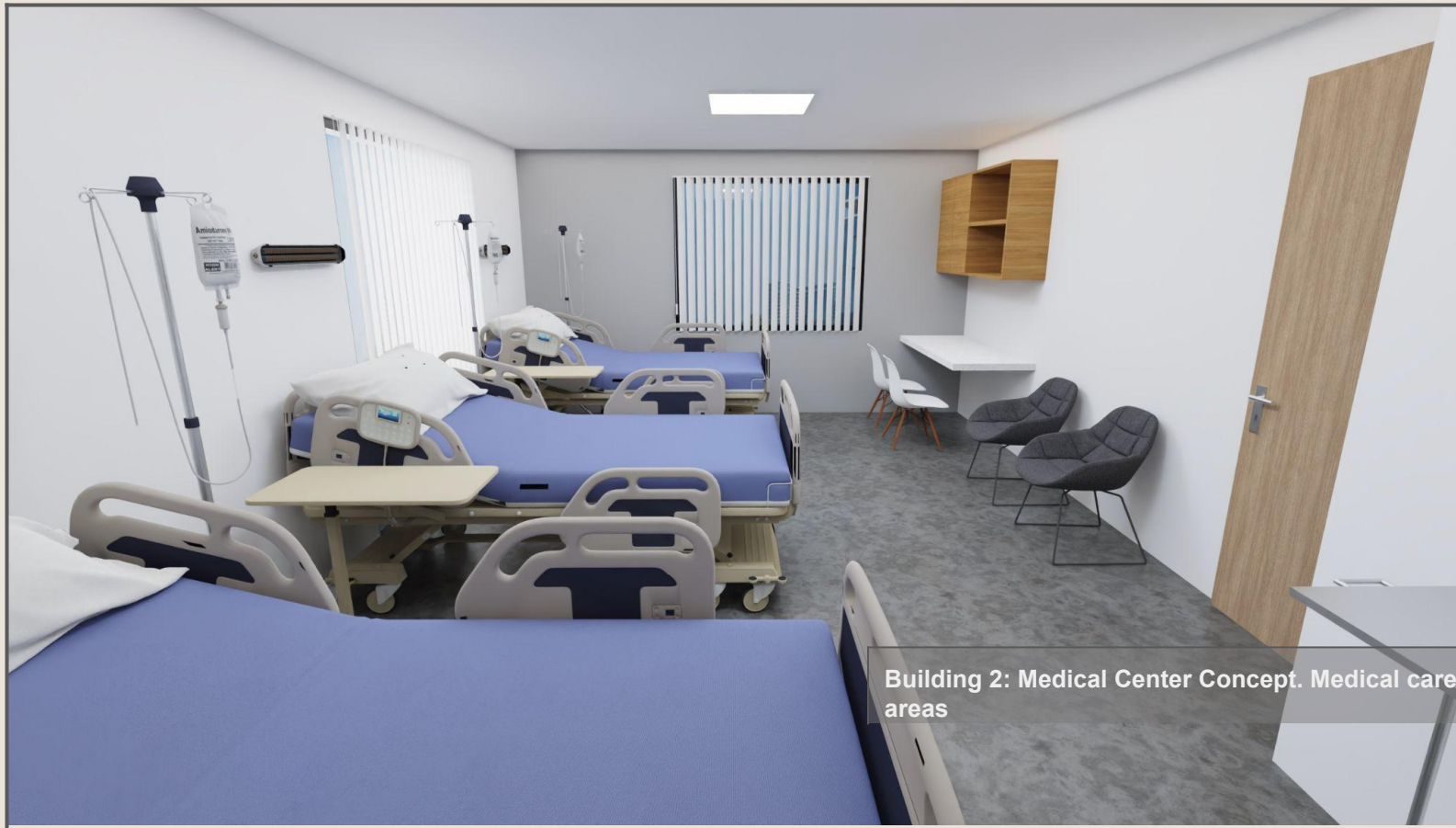
Building 2: Medical Center Concept.
Wellness Zone

View 1



Building 2: Medical Center Concept. Meeting Rooms

View 2



Building 2: Medical Center Concept. Medical care areas

View 3



Building 2: Medical Center Concept. Private meeting areas

View 4



Building 2: Medical Center Concept.
Physiotherapy Area

View 5



View 6



View 7 - Top View



View 8 - Aerial Perspective