

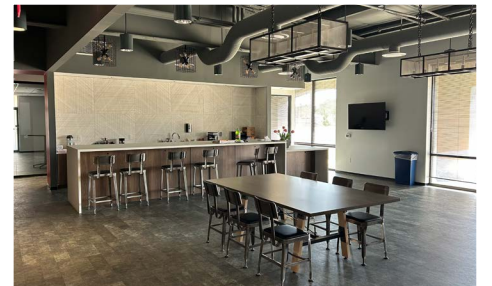
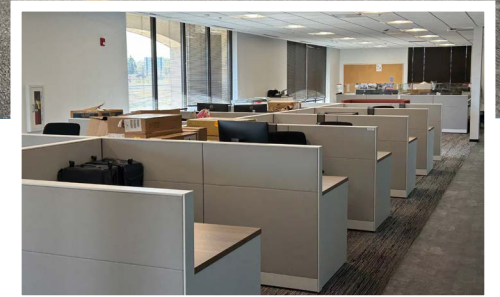
For Lease

6,000-14,400 SF

506 W. Anthony Drive  
Champaign, Illinois 61822

**PROPERTY HIGHLIGHTS**

- Availability: Immediate
- Zoning: C-G
- Year Built: 1978
- Ideal office / showroom / training rooms with warehouse serviced by grade level drive in door
- Frontage on I-74 with tremendous signage potential
- Located between Prospect and Neil, adjacent to Sullivan Parkhill (Leman Automotive) and Ashley Furniture
- Surrounding properties include an array of hotels, apartments, retail, restaurants and car dealerships
- Broker has an ownership interest in this property



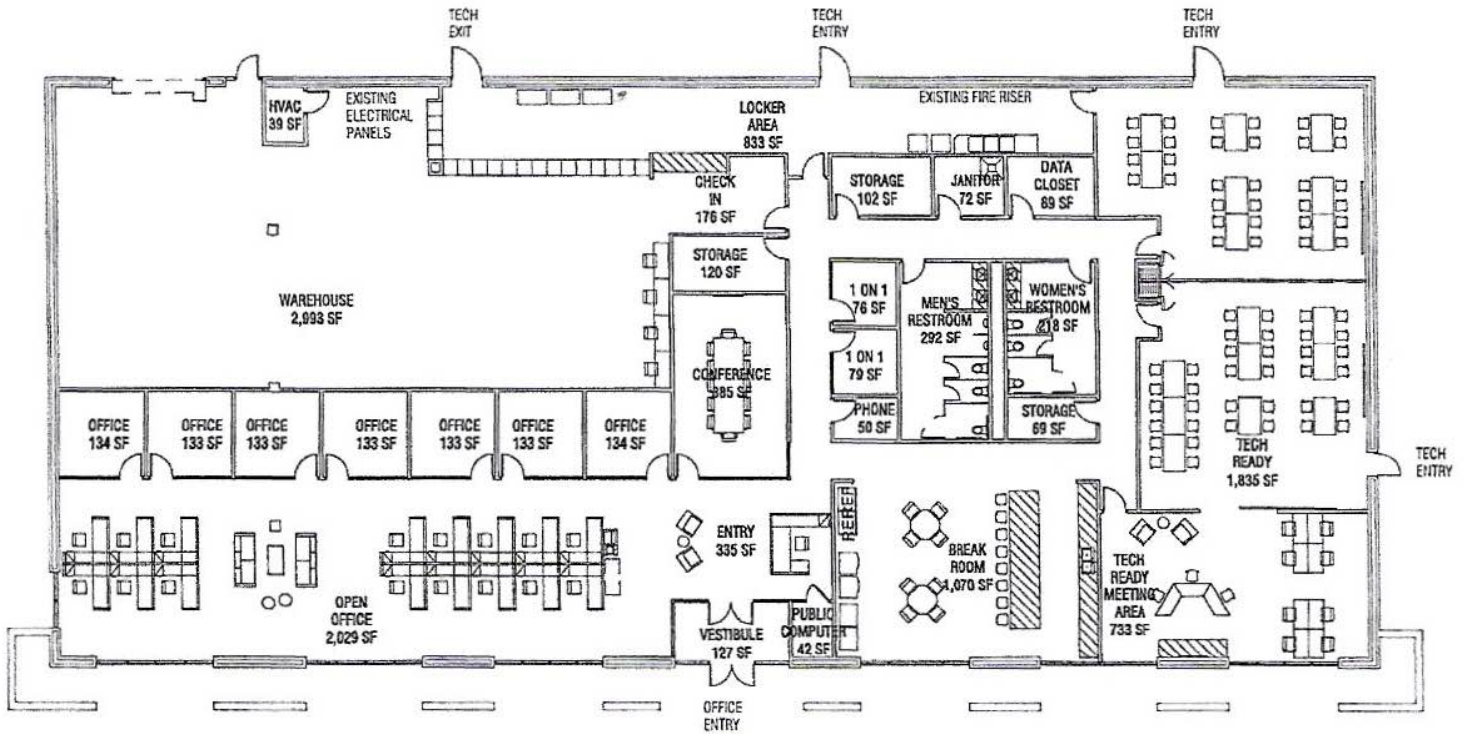
**Contact**

Steve Sullivan  
+1 847 610 0123  
ssullivan@hiffman.com

One Oakbrook Terrace  
Suite 400  
Oakbrook Terrace, Illinois 60181  
+1 630 932 1234

[hiffman.com](http://hiffman.com)

# FLOOR PLAN



## Contact

Steve Sullivan  
+1 847 610 0123  
ssullivan@hiffman.com



One Oakbrook Terrace  
Suite 400  
Oakbrook Terrace, Illinois 60181  
+1 630 932 1234

[hiffman.com](http://hiffman.com)