

1660 L

Office For Lease

762 - 13,038 SF



Leasing Information:  
202.513.6700

**Lincoln**

**Adam Biberaj**  
202.513.6736  
abiberaj@lpc.com

**Merrill Turnbull**  
202.513.6713  
mturnbull@lpc.com

**Alexander Cholet**  
202.513.6716  
acholet@lpc.com

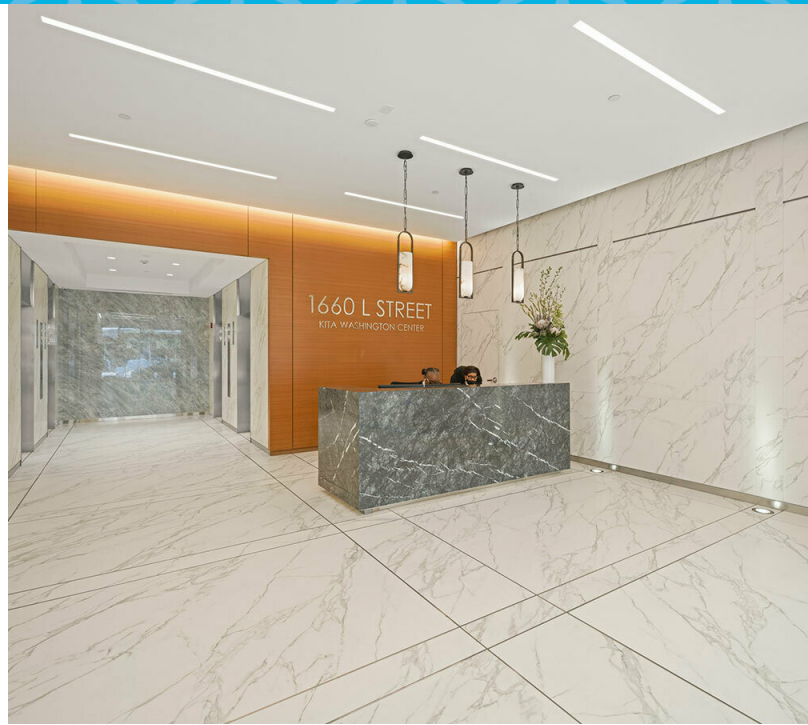
**McKay Elliott**  
202.513.6724  
melliott@lpc.com

101 Constitution Avenue NW  
Suite 325 East  
Washington, DC 20001

[www.lpc.com](http://www.lpc.com)



Office For Lease  
762 - 13,038 SF



**Property Highlights**

- Corner building located at 17th and L Street
- Newly renovated lobby
- Four-minute walk to Farragut North Metro Station
- Tenant-only windowed fitness center
- New state-of-the-art conference facility with 50-person capacity

**Availabilities**

**SF**

**Lease Rate**

**Date Available**

Retail - 4	2,337 SF	Negotiable	Immediately
Suite 210	1,610 SF	\$46.00 FS	Immediately
Suite 316	3,045 SF	\$48.00 FS	Immediately
Suite 440	2,188 SF	\$47.00 FS	Immediately
Suite 460	3,582 SF	\$52.00 FS	Immediately
Suite 509	762 SF	\$48.00 FS	Immediately
Suite 513	828 SF	\$48.00 FS	Immediately
Suite 605	2,958 SF	\$50.00 FS	Immediately
Spec Suite 701	2,662 - 5,619 SF	\$50.00 FS	Fall 2026
Spec Suite 702	2,957 - 5,619 SF	\$50.00 FS	Fall 2026
Suite 801	5,018 SF	\$48.00 FS	Immediately
Suite 900	6,500 - 13,038 SF	\$50.00 FS	Immediately
Suite 1020	1,195 SF	\$50.00 FS	Immediately
Suite 1010	1,763 SF	\$48.00 FS	Immediately

**Adam Biberaj**

202.513.6736  
abiberaj@lpc.com

**Merrill Turnbull**

202.513.6713  
mturnbull@lpc.com

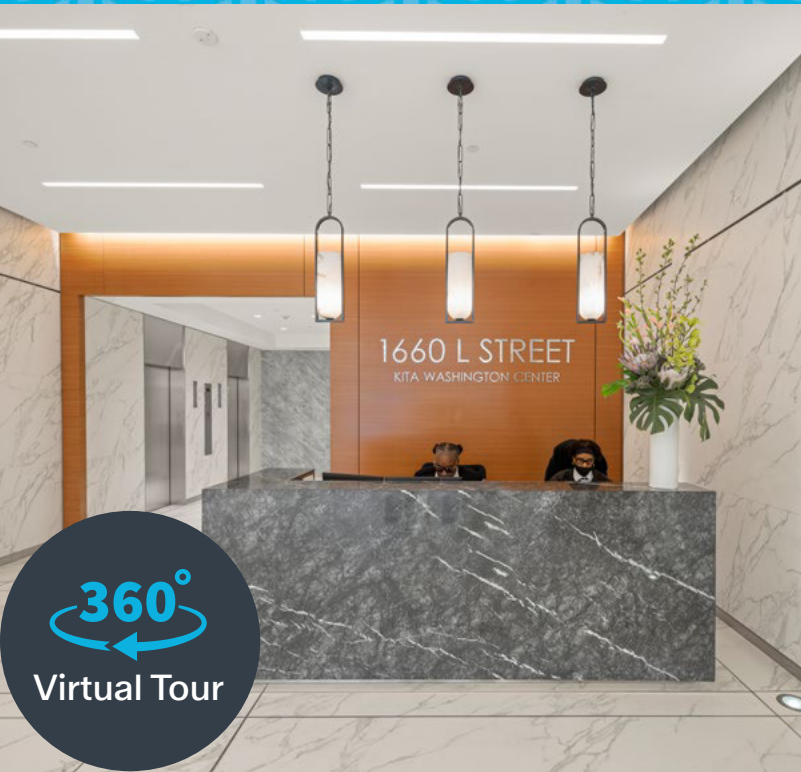
**Alexander Cholet**

202.513.6716  
acholet@lpc.com

**McKay Elliott**

202.513.6724  
melliott@lpc.com

**Lincoln**



360°  
Virtual Tour



360°  
Virtual Tour



360°  
Virtual Tour

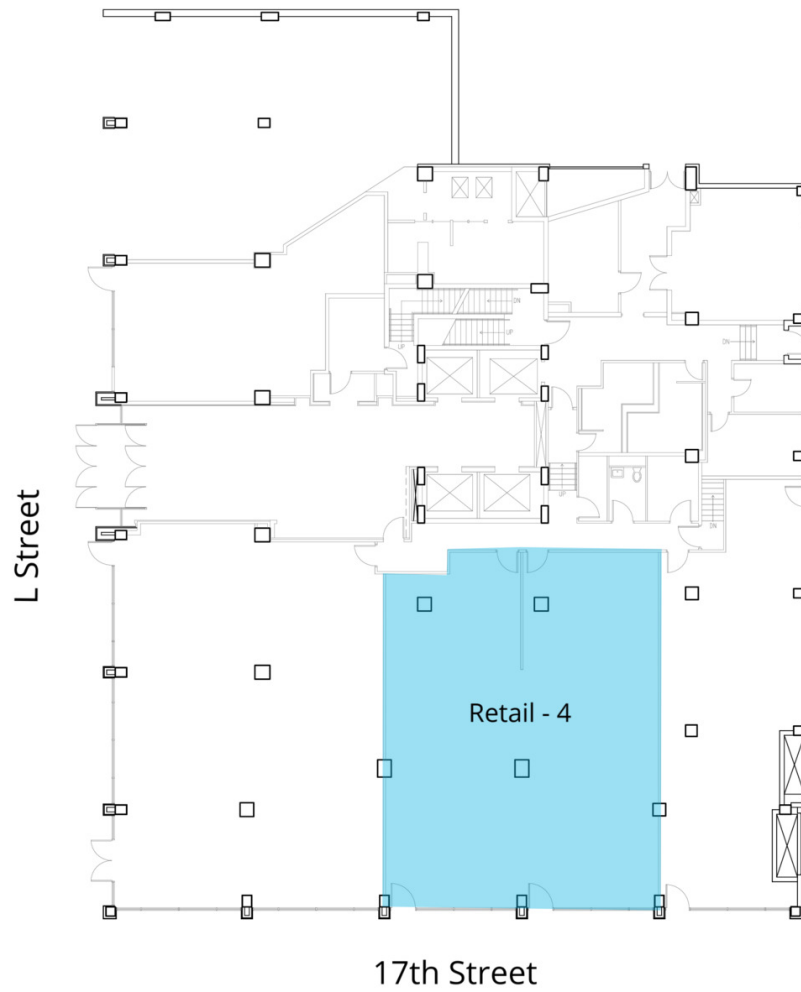
Adam Biberaj  
202.513.6736  
abiberaj@lpc.com

Merrill Turnbull  
202.513.6713  
mturnbull@lpc.com

Alexander Cholet  
202.513.6716  
acholet@lpc.com

McKay Elliott  
202.513.6724  
melliott@lpc.com

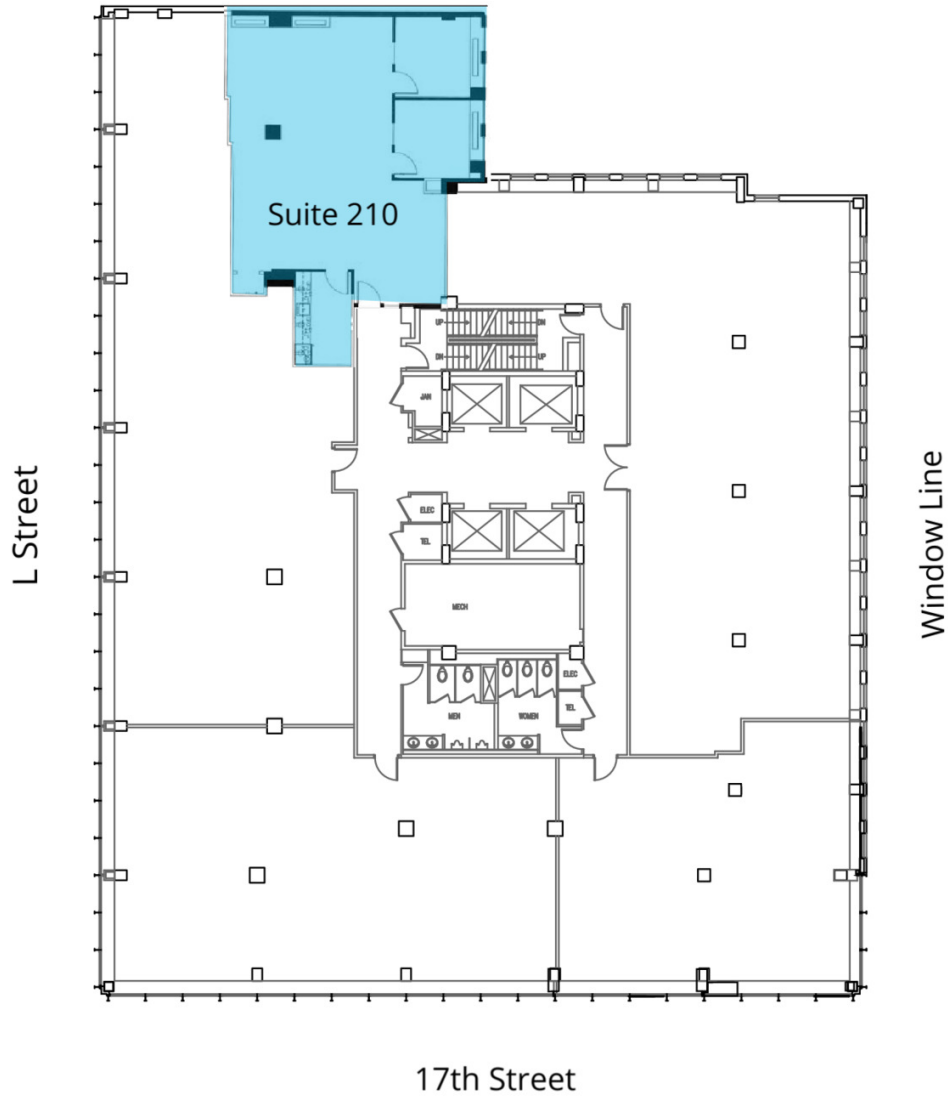
Lincoln



Suite	Size	Lease Rate	Description
■ Retail - 4	2,337 SF	Negotiable	Available Immediately

<b>Adam Biberaj</b> 202.513.6736 abiberaj@lpc.com	<b>Merrill Turnbull</b> 202.513.6713 mturnbull@lpc.com	<b>Alexander Cholet</b> 202.513.6716 acholet@lpc.com	<b>McKay Elliott</b> 202.513.6724 melliott@lpc.com
---	--	--	--

**Lincoln**



Suite	Size	Lease Rate	Description
■ Suite 210	1,610 SF	\$46.00 FS	Immediately

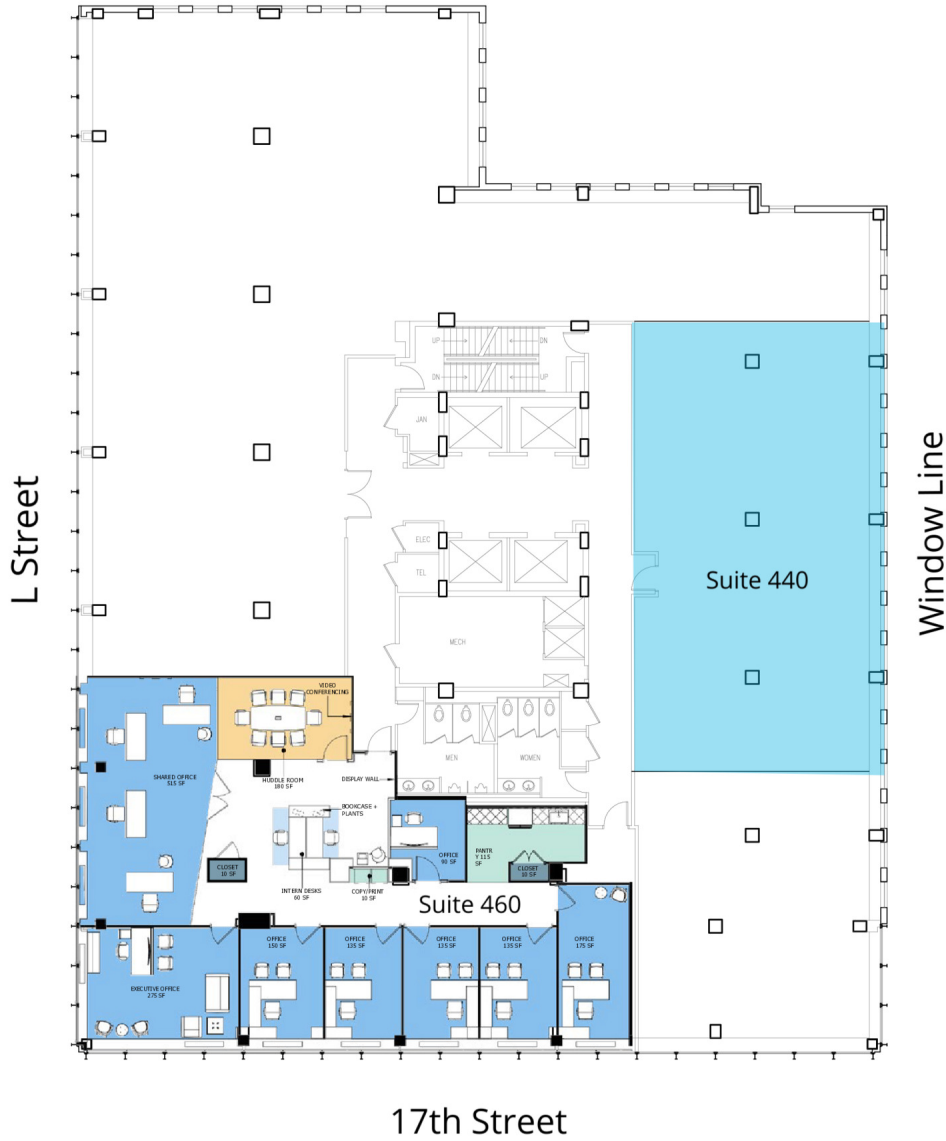
Adam Biberaj  
202.513.6736  
abiberaj@lpc.com

Merrill Turnbull  
202.513.6713  
mturnbull@lpc.com

Alexander Cholet  
202.513.6716  
acholet@lpc.com

McKay Elliott  
202.513.6724  
melliott@lpc.com

**Lincoln**



Suite	Size	Lease Rate	Description
■ Suite 440	2,188 SF	\$47.00 FS	Shell Condition
Suite 460	3,582 SF	\$52.00 FS	Available Immediately

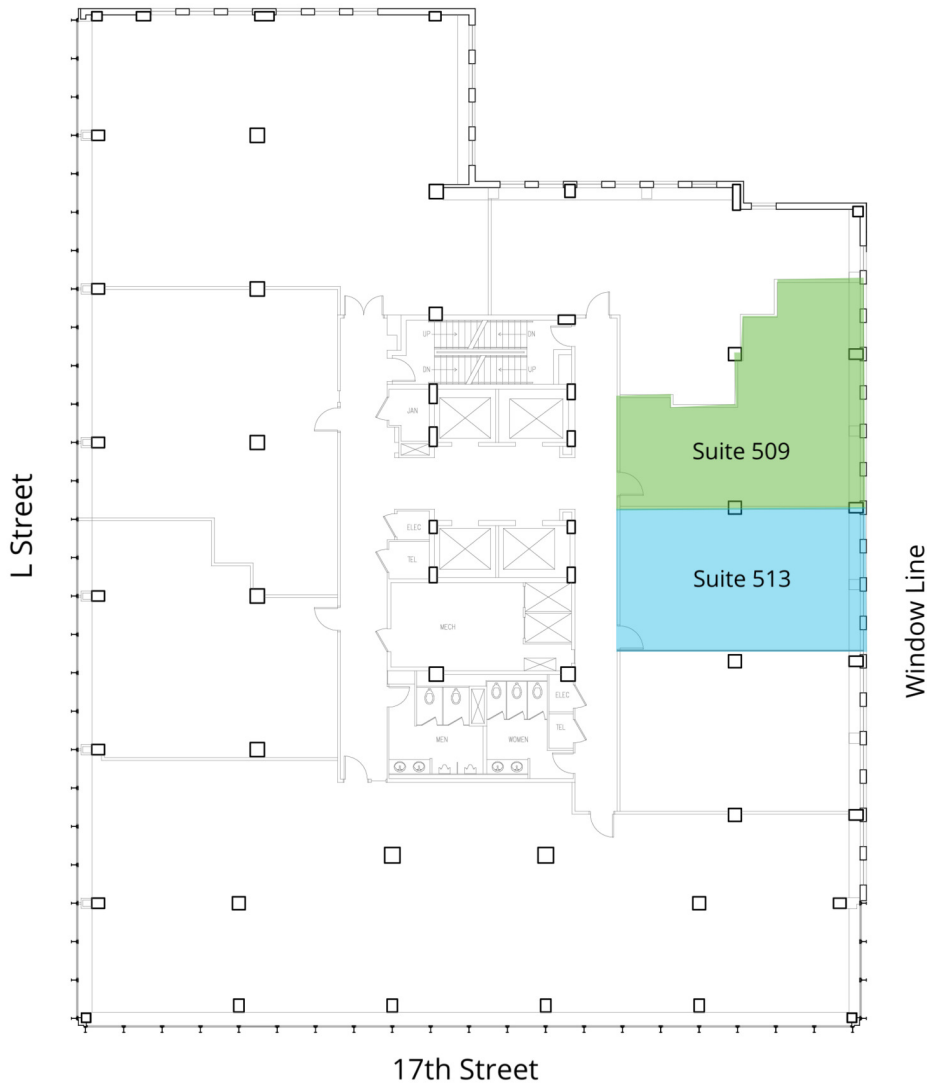
Adam Biberaj  
202.513.6736  
abiberaj@lpc.com

Merrill Turnbull  
202.513.6713  
mturnbull@lpc.com

Alexander Cholet  
202.513.6716  
acholet@lpc.com

McKay Elliott  
202.513.6724  
melliott@lpc.com

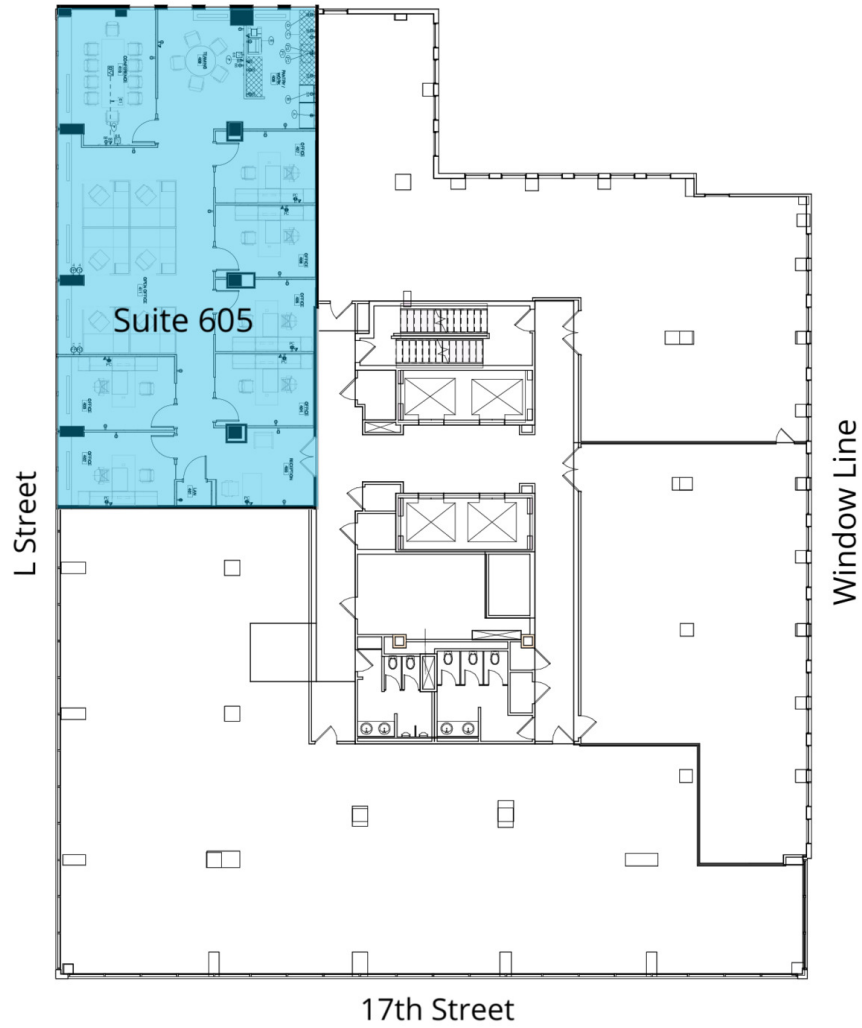




Suite	Size	Lease Rate	Description
■ Suite 509	762 SF	\$48.00 FS	Available Immediately
■ Suite 513	828 SF	\$48.00 FS	Available Immediately

<b>Adam Biberaj</b> 202.513.6736 abiberaj@lpc.com	<b>Merrill Turnbull</b> 202.513.6713 mturnbull@lpc.com	<b>Alexander Cholet</b> 202.513.6716 acholet@lpc.com	<b>McKay Elliott</b> 202.513.6724 melliott@lpc.com
---	--	--	--

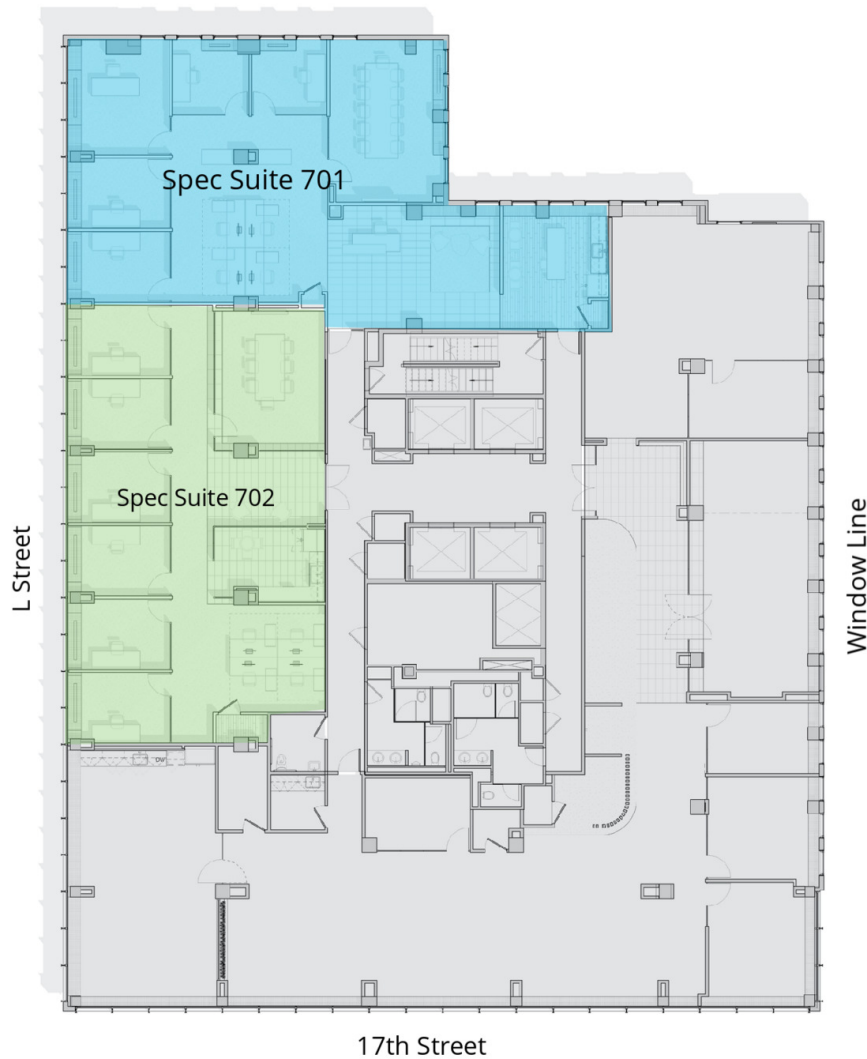
**Lincoln**



Suite	Size	Lease Rate	Description	Virtual Tour
■ Suite 605	2,958 SF	\$50.00 FS	Built-out suite in excellent condition. Fully furnished. Front of building.	<a href="#">View Here</a>

<b>Adam Biberaj</b> 202.513.6736 abiberaj@lpc.com	<b>Merrill Turnbull</b> 202.513.6713 mturnbull@lpc.com	<b>Alexander Cholet</b> 202.513.6716 acholet@lpc.com	<b>McKay Elliott</b> 202.513.6724 melliott@lpc.com
---	--	--	--

**Lincoln**



Suite	Size	Lease Rate	Description
■ Spec Suite 701	2,662 - 5,619 SF	\$50.00 FS	Front of building, L Street window line. Brand new spec suite, delivering Fall 2026
■ Spec Suite 702	2,957 - 5,619 SF	\$50.00 FS	Brand new spec suite, delivering Fall 2026

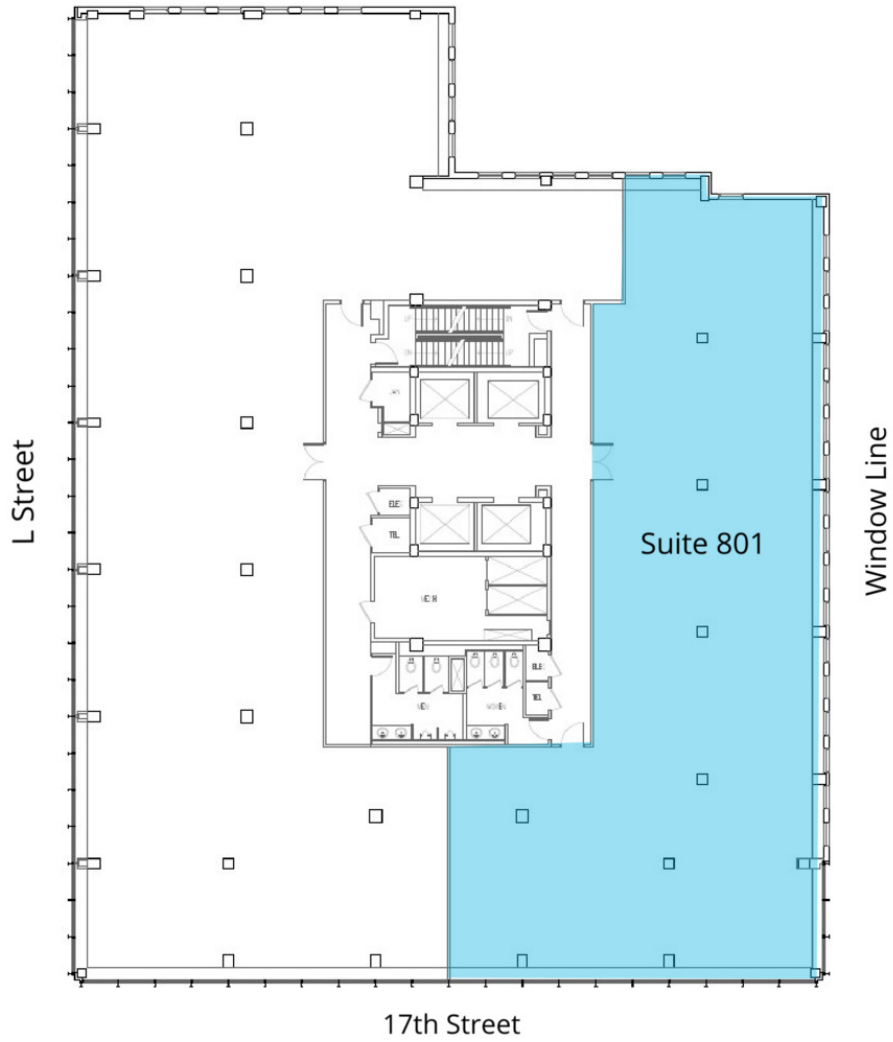
Adam Biberaj  
202.513.6736  
abiberaj@lpc.com

Merrill Turnbull  
202.513.6713  
mturnbull@lpc.com

Alexander Cholet  
202.513.6716  
acholet@lpc.com

McKay Elliott  
202.513.6724  
melliott@lpc.com

**Lincoln**



Suite	Size	Lease Rate	Description
■ Suite 801	5,018 SF	\$48.00 FS	Available Immediately

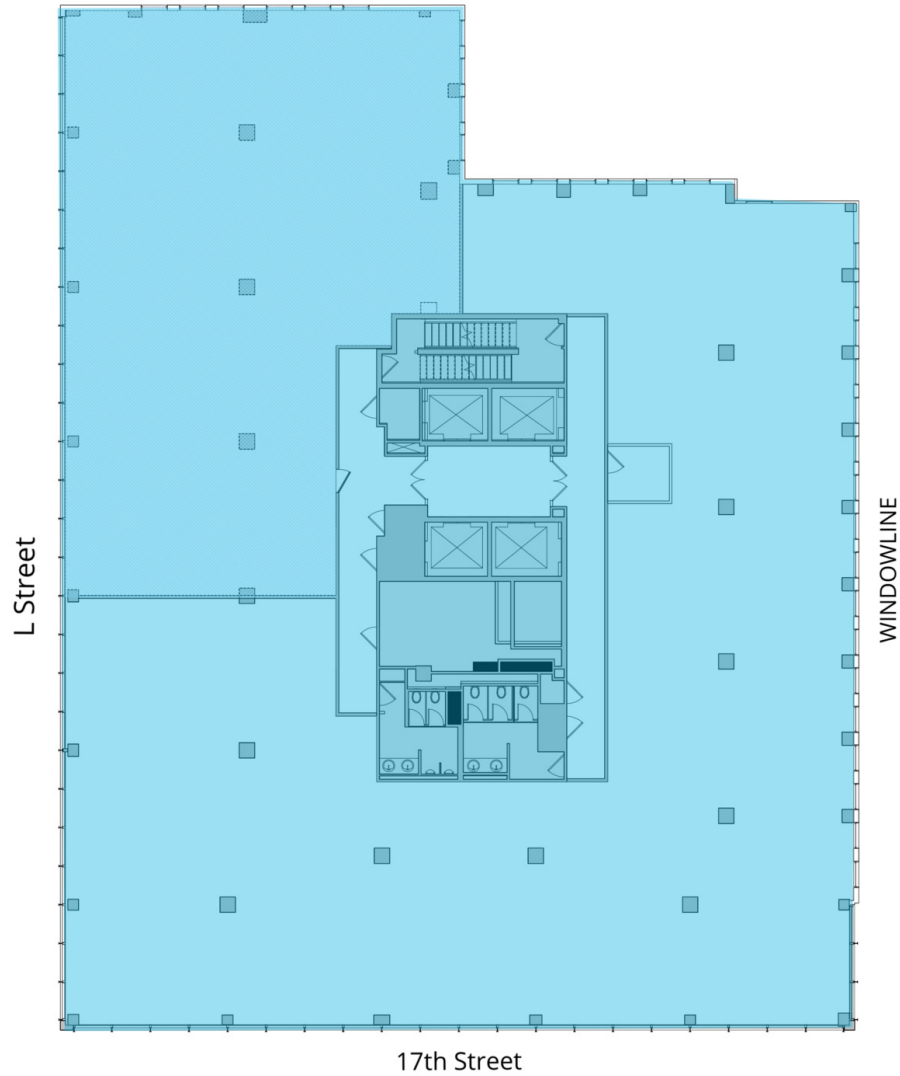
Adam Biberaj  
202.513.6736  
abiberaj@lpc.com

Merrill Turnbull  
202.513.6713  
mturnbull@lpc.com

Alexander Cholet  
202.513.6716  
acholet@lpc.com

McKay Elliott  
202.513.6724  
melliott@lpc.com

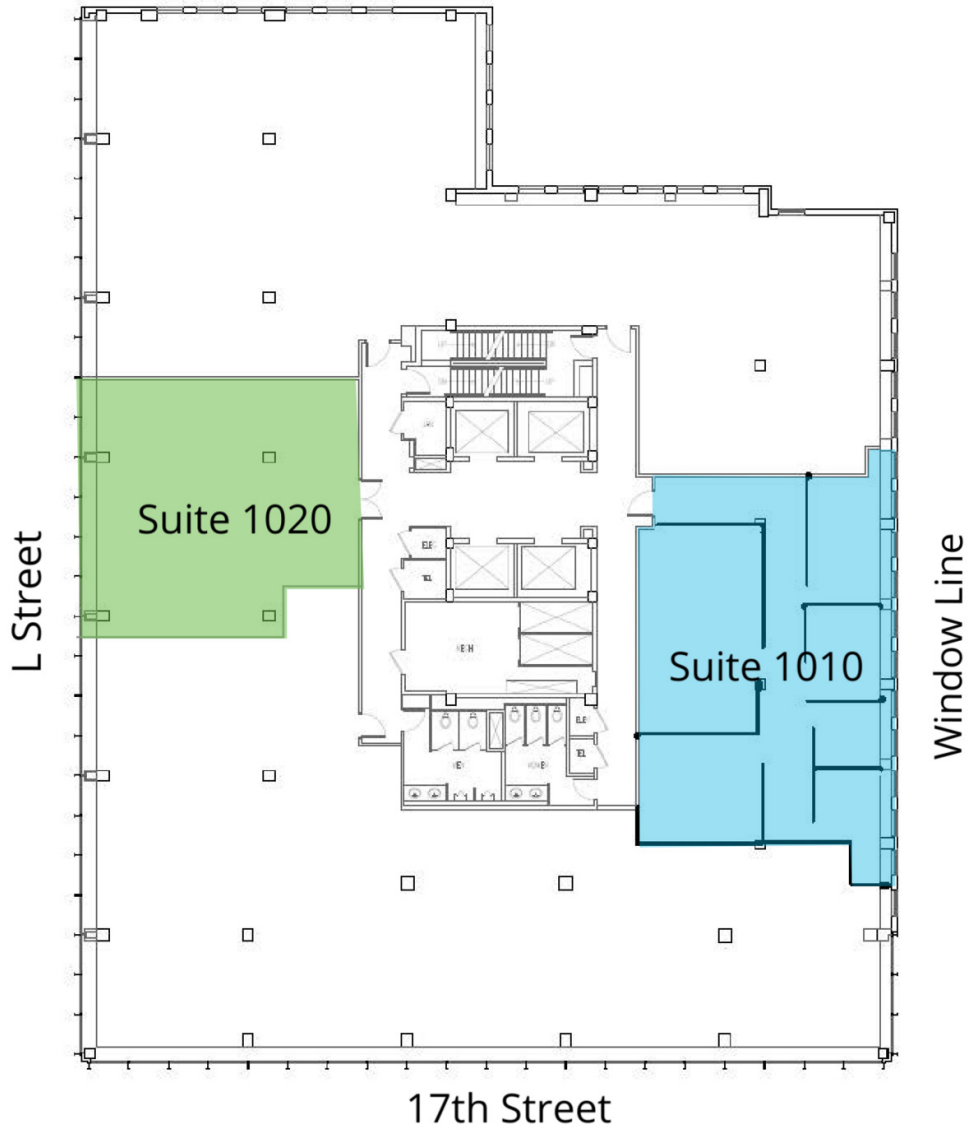
**Lincoln**



Suite	Size	Lease Rate	Description
■ Suite 900	6,500 - 13,038 SF	\$50.00 FS	Full floor opportunity at just 13,000 SF. Full window line along L and 17th with incredible corner view. Flexible demise.

<b>Adam Biberaj</b> 202.513.6736 abiberaj@lpc.com	<b>Merrill Turnbull</b> 202.513.6713 mturnbull@lpc.com	<b>Alexander Cholet</b> 202.513.6716 acholet@lpc.com	<b>McKay Elliott</b> 202.513.6724 melliott@lpc.com
---	--	--	--

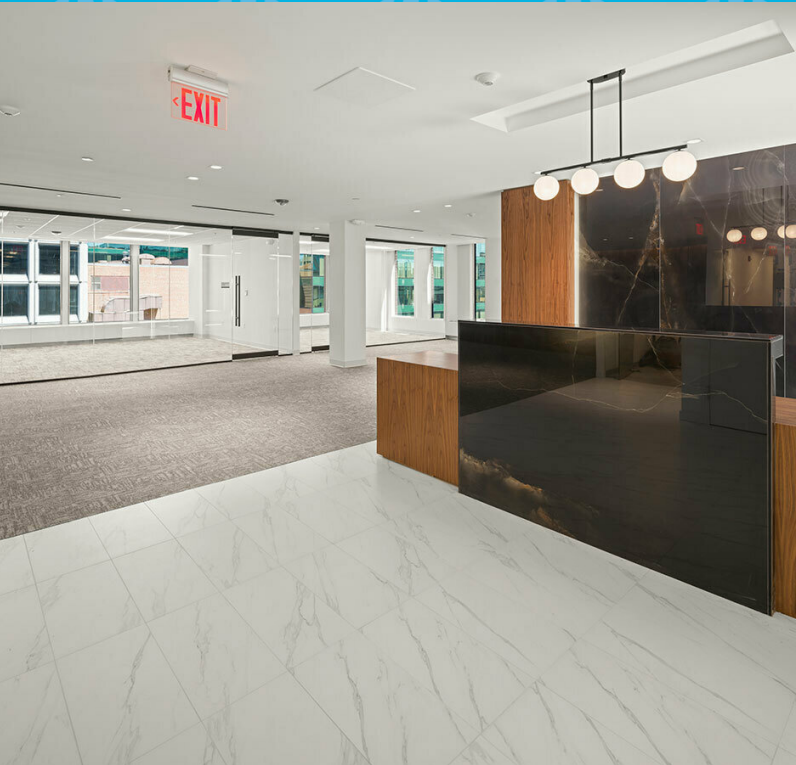
**Lincoln**



Suite	Size	Lease Rate	Description
■ Suite 1020	1,195 SF	\$50.00 FS	Available Immediately
■ Suite 1010	1,763 SF	\$48.00 FS	Available Immediately

<b>Adam Biberaj</b> 202.513.6736 abiberaj@lpc.com	<b>Merrill Turnbull</b> 202.513.6713 mturnbull@lpc.com	<b>Alexander Cholet</b> 202.513.6716 acholet@lpc.com	<b>McKay Elliott</b> 202.513.6724 melliott@lpc.com
---	--	--	--

**Lincoln**



**Adam Biberaj**  
202.513.6736  
abiberaj@lpc.com

**Merrill Turnbull**  
202.513.6713  
mturnbull@lpc.com

**Alexander Cholet**  
202.513.6716  
acholet@lpc.com

**McKay Elliott**  
202.513.6724  
melliott@lpc.com

**Lincoln**

1660 L

Nearby Retail



Map data ©2026 Google

Adam Biberaj  
202.513.6736  
abiberaj@lpc.com

Merrill Turnbull  
202.513.6713  
mturnbull@lpc.com

Alexander Cholet  
202.513.6716  
acholet@lpc.com

McKay Elliott  
202.513.6724  
melliott@lpc.com

Lincoln



1660 L

Leasing Information:  
202.513.6700

**Adam Biberaj**  
202.513.6736  
abiberaj@lpc.com

**Merrill Turnbull**  
202.513.6713  
mturnbull@lpc.com

**Alexander Cholet**  
202.513.6716  
acholet@lpc.com

**McKay Elliott**  
202.513.6724  
melliott@lpc.com

# Lincoln

101 Constitution Avenue NW  
Suite 325 East  
Washington, DC 20001

[www.lpc.com](http://www.lpc.com)