

3,450 SF  
Office Space



## PIONEER BUSINESS CENTER—280 E CORPORATE DRIVE, MERIDIAN

### Property Highlights

- Excellent Office Space Location at Central Valley Corporate Park with superb freeway access to i84 and Main Street
- Walkable to Restaurants, banks and Shops

**Total Space Available: 3,450 Square Feet**

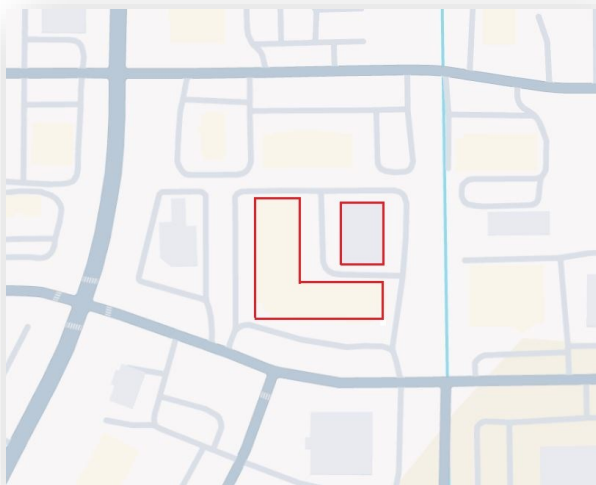
**Lease Rate: Negotiable, NNN**

**Property Type: Office Space**

**Parking: Ample, non-exclusive parking throughout center**

**Signage: Exterior**

**\*signage based on square footage**



Rafanelli  
& Nahas

REAL ESTATE  
DEVELOPMENT

**JUSTIN VOGEL**

702 W. Idaho Street, Suite 825  
Boise, ID 83702

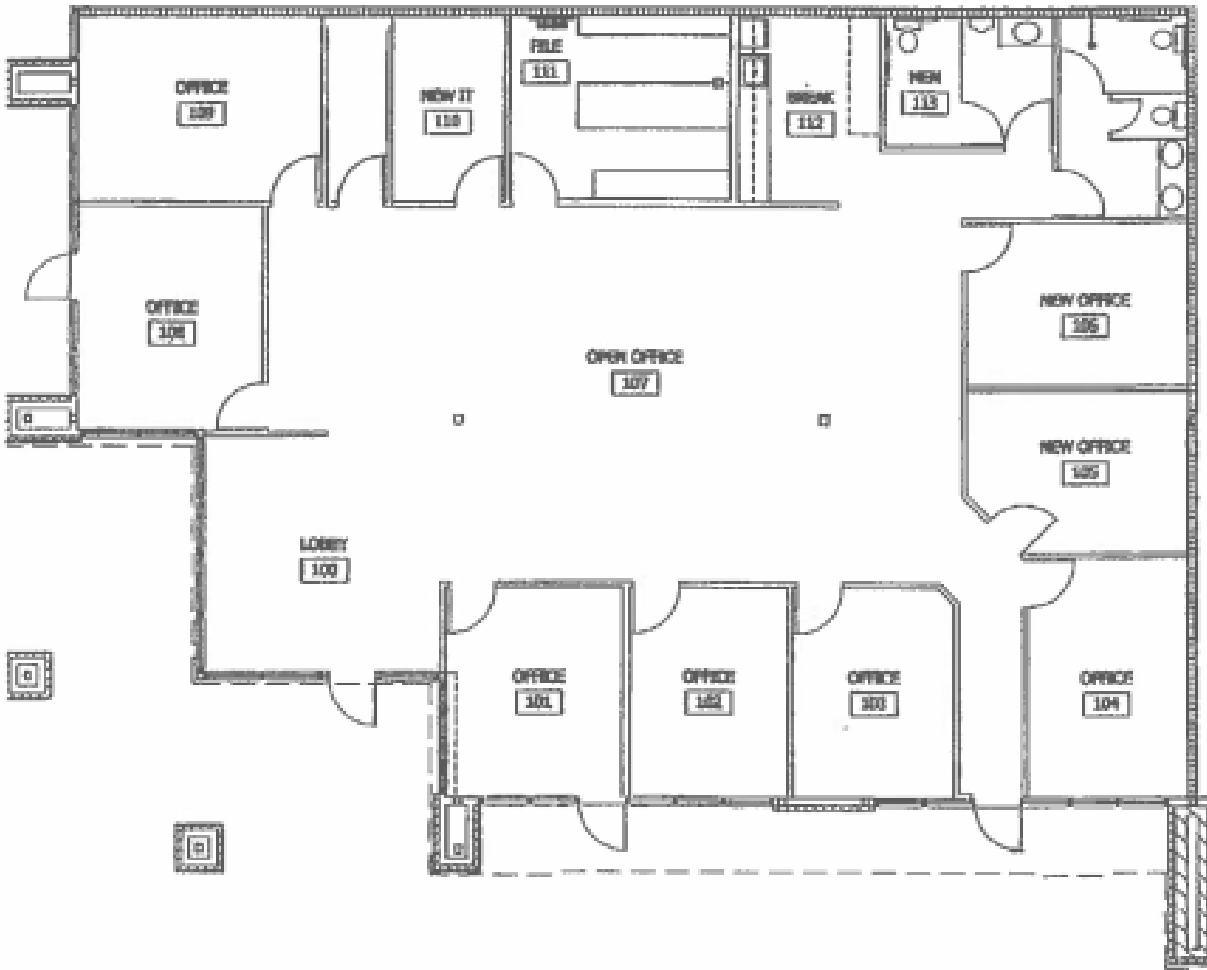
PH : 208.947.0407

FAX : 208.947.0411

CELL : 208.869.8302

e-mail: [justinv@rafnah.com](mailto:justinv@rafnah.com)

[www.rafnah.com](http://www.rafnah.com)



Space Includes	Lobby Open Office Space Private Offices
Additional	Restrooms

**Rafanelli  
& Nahas**

REAL ESTATE  
DEVELOPMENT