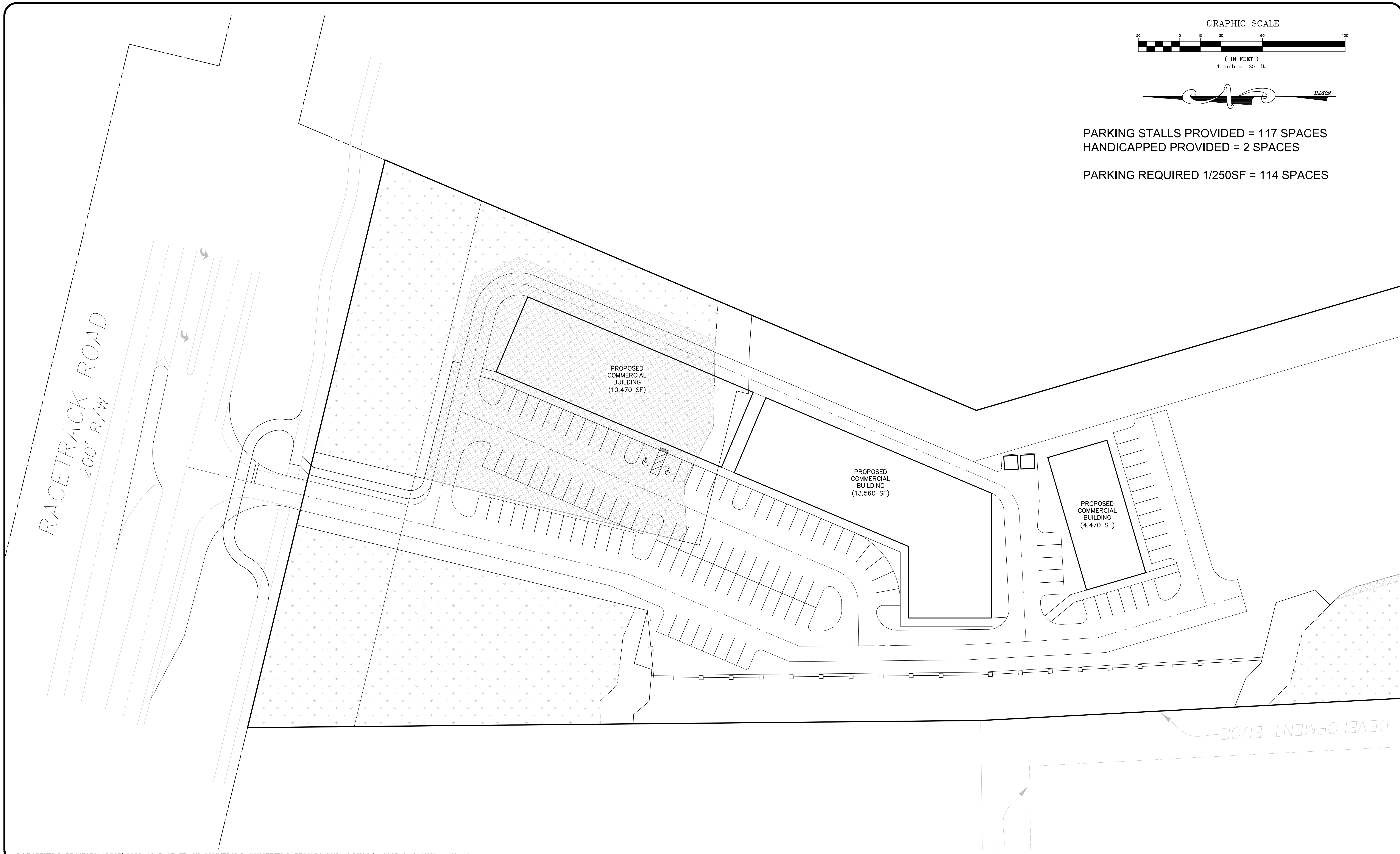


PARKING STALLS PROVIDED = 117 SPACES
 HANDICAPPED PROVIDED = 2 SPACES

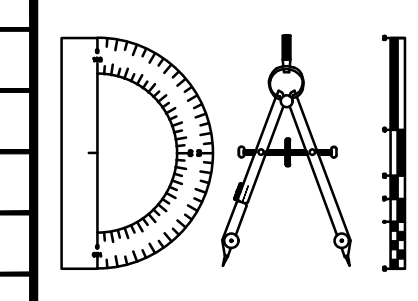
PARKING REQUIRED 1/250SF = 114 SPACES



P:\POTENTIAL PROJECTS\ALSO\0022-13 RACE TRACK COMMERCIAL\CONCEPTUAL\RTCOMM CON-13.DWG2/4/2025 9:48 AM Steve Murrin

REVISIONS	
NO.	DESCRIPTION

DESIGNED BY: DAI
 DRAWN BY: SM
 CHECKED BY: D. TAYLOR
 SCALE: 1" = 30'
 DATE: 2/4/2025
 PROJ. NO.: 2038-1



Dunn & Associates, Inc.
 A Live Oak Engineering, Inc. Company
 CIVIL ENGINEERS / LAND PLANNERS
 8647 Baypine Road, Suite 200
 Jacksonville, Florida 32256
 Phone: (904)363-8916 Fax: (904)363-8917
 www.dunneng.com

RACE TRACK ROAD COMMERCIAL
 FOR:
GREENLAND INVESTMENTS HOLDINGS
 ST JOHNS COUNTY, FLORIDA
 CONCEPTUAL PLAN

DAVID M. TAYLOR ENGINEER NO. 44184
 GLEN R. WIEGER ENGINEER NO. 81419
 JOSHUA M. BENOLKEN ENGINEER NO. 93672

Sheet No. 1 of 1
CON-13
 DWG. NO.

RACE TRACK ROAD COMMERCIAL

NOT RELEASED FOR CONSTRUCTION