

41 Orchard Street
Ramsey, NJ 07446

900 SF OFFICE
SECOND FLOOR OFFICE SUITE FOR LEASE



DISTANCE TO

17

0.3 Miles

202

2.4 Miles

287

3.7 Miles

87

4.3 Miles

PARKWAY

6.9 Miles

Gov. M
Cuomo
Bridge

18.9 Miles

EXCELLENT BERGEN COUNTY LOCATION IN THE HEART OF RAMSEY

Located in the heart of Ramsey, one of Bergen County's most established business communities, this 12,686 SF building offers a well-maintained second-floor office suite featuring a functional layout with a private office, open workspace, kitchen, restroom, and storage, providing flexibility for day-to-day operations.

This location boasts close proximity to Route 17, I-287, and I-87. Nearby NJ Transit rail & bus service, along with surrounding retail, dining, and neighborhood amenities, enhance convenience for employees and clients alike.

2nd Fl: Unit 201	900 SF
Layout	Open Floor plan with 1 Private office, storage rooms, restroom and kitchen.
Parking	4 spaces
Asking Rate	\$1,900/mo. Gross

NAI James E. Hanson
COMMERCIAL REAL ESTATE SERVICES, WORLDWIDE

Jeffrey W. DeMagistris, SIOR
Senior Vice President

201 488 5800 x147
jdemagistris@naihanson.com

Thomas A. Vetter, SIOR
Senior Vice President

201 488 5800 x105
tvetter@naihanson.com

Giovanni Ramaci
Associate

201 488 5800 x131
gramaci@naihanson.com

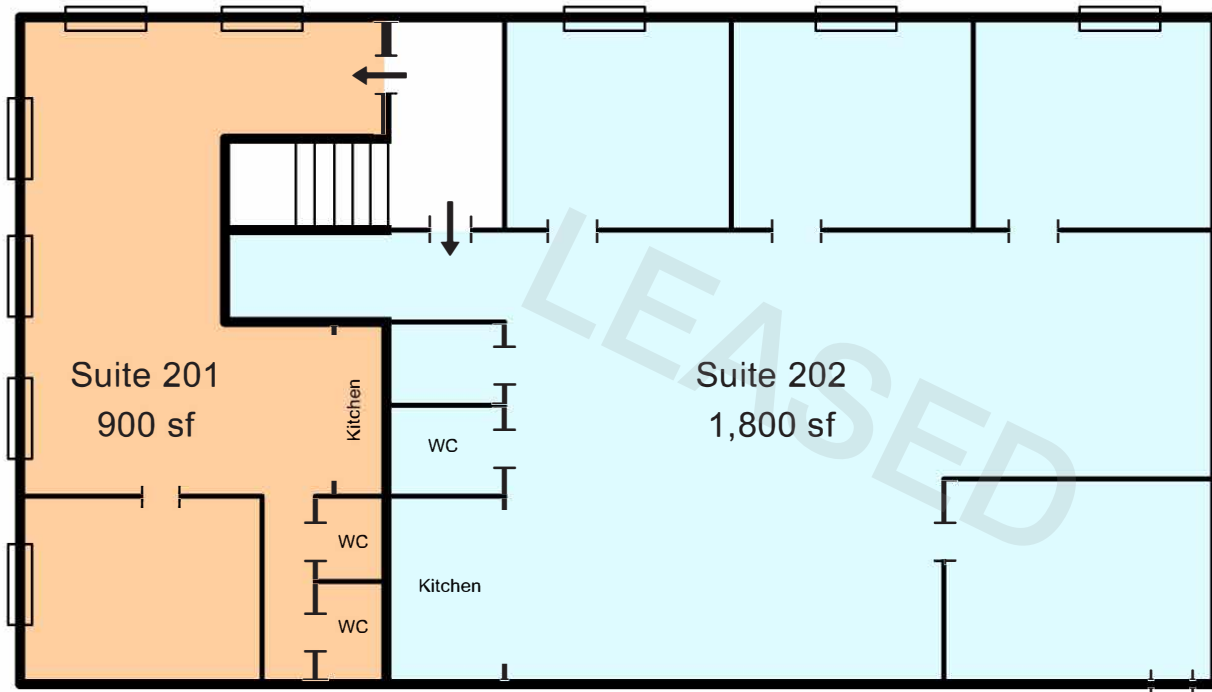
FOLLOW US! | NJ Offices: Teterboro | Parsippany | naihanson.com | Member of NAI Global with +325 Offices Worldwide

SERVICES OFFERED

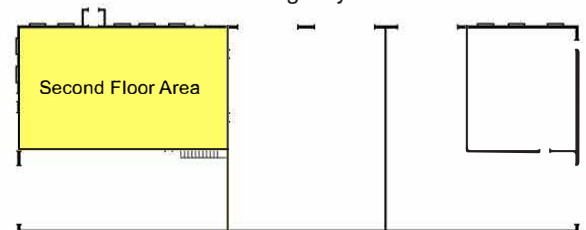
Brokerage • Property Management • Corporate Services • Financing • Logistics • Government Services • Healthcare • Tenant Representation • Cold Storage • Investment Services

The information contained herein has been obtained from sources considered to be reliable, but no guarantee of its accuracy is made by NAI James E. Hanson

Unit 201: 900 SF | 2ND FLOOR OFFICE SUITE



Building Layout



 AVAILABLE