

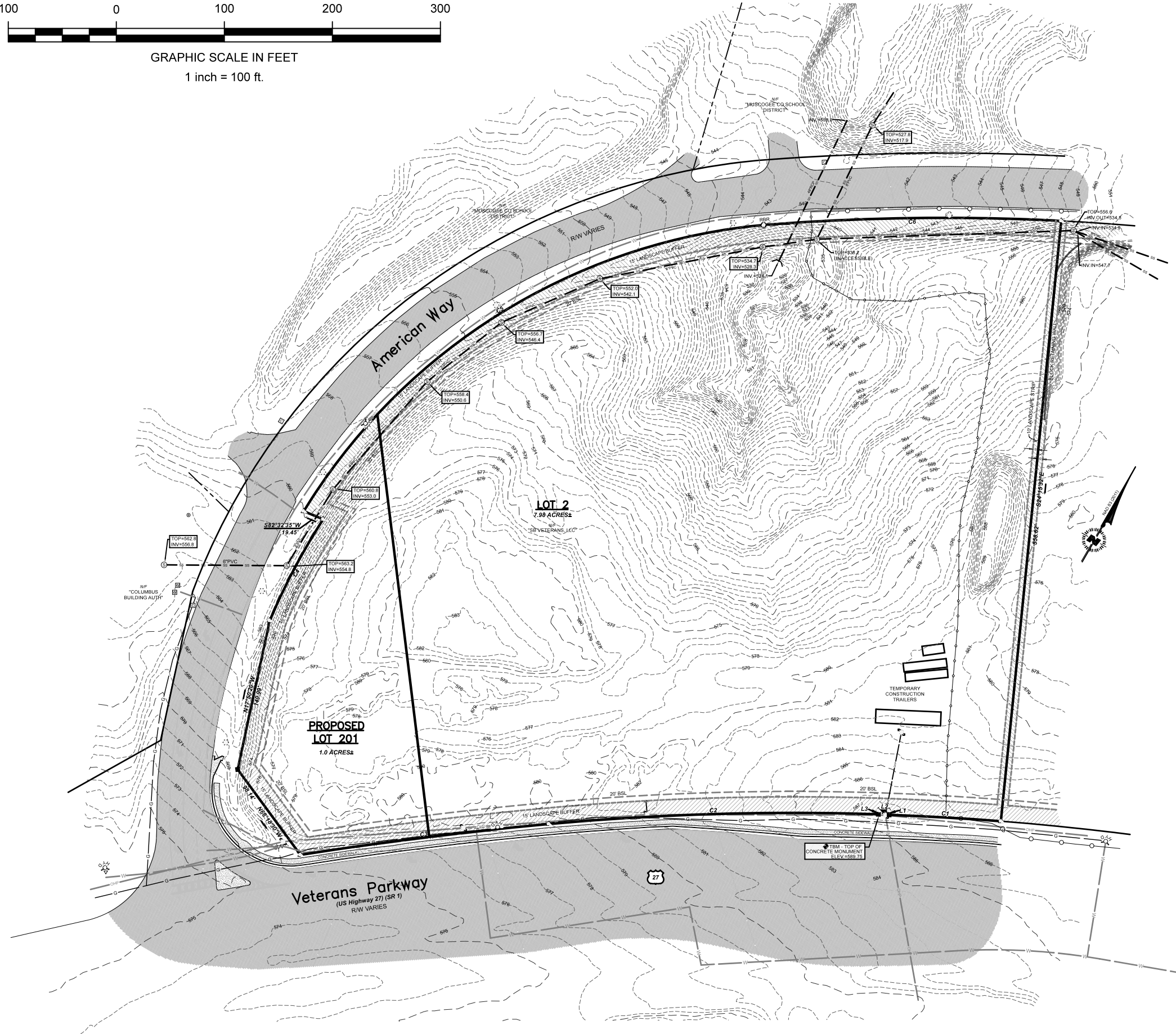
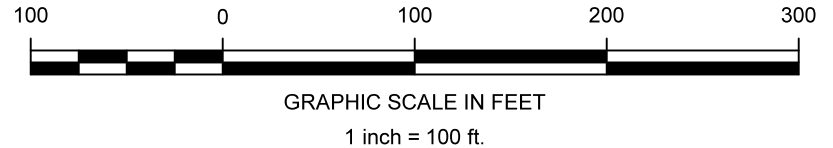
**LEGEND**

**STANDARD SYMBOLS & LINES**

- PROPERTY CORNER
- ⊙ SANITARY SEWER MANHOLE
- ⊕ FIRE HYDRANT
- CONCRETE BOLLARD
- CONCRETE WHEEL GUARD
- PROPERTY LINE
- ADJOINING PROPERTY LINE
- BUILDING SETBACK LINE

**STANDARD HATCHING**

- ▨ BUILDING OVERHANG
- ▨ BUILDING
- ▨ ASPHALT
- ▨ CONCRETE



**ZONING INFORMATION**

PROPERTY IS ZONED GC  
(GENERAL COMMERCIAL)

FRONT/STREET SETBACK: ..... 20FT  
 SIDE SETBACK: ..... 0/15FT\*\*  
 REAR SETBACK: ..... 0/15FT\*\*  
 \*\* 15FT WHEN ABUTTING A RESIDENTIAL ZONING DISTRICT

**CAUTION! UNDERGROUND SERVICE ALERT!**  
 IT IS POSSIBLE THAT THERE ARE EXISTING UNDERGROUND UTILITIES THAT ARE NOT SHOWN ON THIS DRAWING.



**CONCEPTUAL SITE PLAN**

Date: 6/6/2023 Scale: 1" = 100'

Project: Veterans Parkway (Proposed 1 Ac. Lot)  
**VETERANS PARKWAY (7.98 ACRES±)**  
 Part of Land Lot 269, 19th District  
 COLUMBUS, MUSCOGEE COUNTY, GEORGIA

**NIXON MAXEY, PC**  
 PROFESSIONAL ENGINEERING  
 GEORGIA & ALABAMA  
 1400 WILDWOOD AVENUE, COLUMBUS, GA 31906 (706) 536-9386