

EDINBOROUGH CORPORATE CENTER 3300 EDINBOROUGH WAY , EDINA, MN 55435



360° VIRTUAL TOUR

PROPERTY DESCRIPTION

Lease runs through 11/30/28
4,579 RSF
Suite 400
Furniture can be included
Elevator Exposure
Large Private Balcony
3 sides of windows
Grab-n-go market
Surface and covered parking

For more information call Tom Immen at 952-212-8662
Transition Real Estate Advisors

BARRY BIRNBERG

952.820.1673

barry.birnberg@northcocommercial.com

OFFERING SUMMARY - SUITE 400

Lease Rate:	Negotiable
Available SF:	4,579 SF
Building Size:	105,677 SF

DEMOGRAPHICS	0.3 MILES	0.5 MILES	1 MILE
Total Households	1,034	2,625	8,363
Total Population	1,814	4,635	15,648
Average HH Income	\$77,685	\$86,653	\$96,408

The information above has been obtained from services we believe to be reliable, however, we accept no responsibility for its correctness.

NORTHCO COMMERCIAL

Northco Commercial Real Estate

FOR SUBLEASE

EDINBOROUGH CORPORATE CENTER 3300 EDINBOROUGH WAY , EDINA, MN 55435



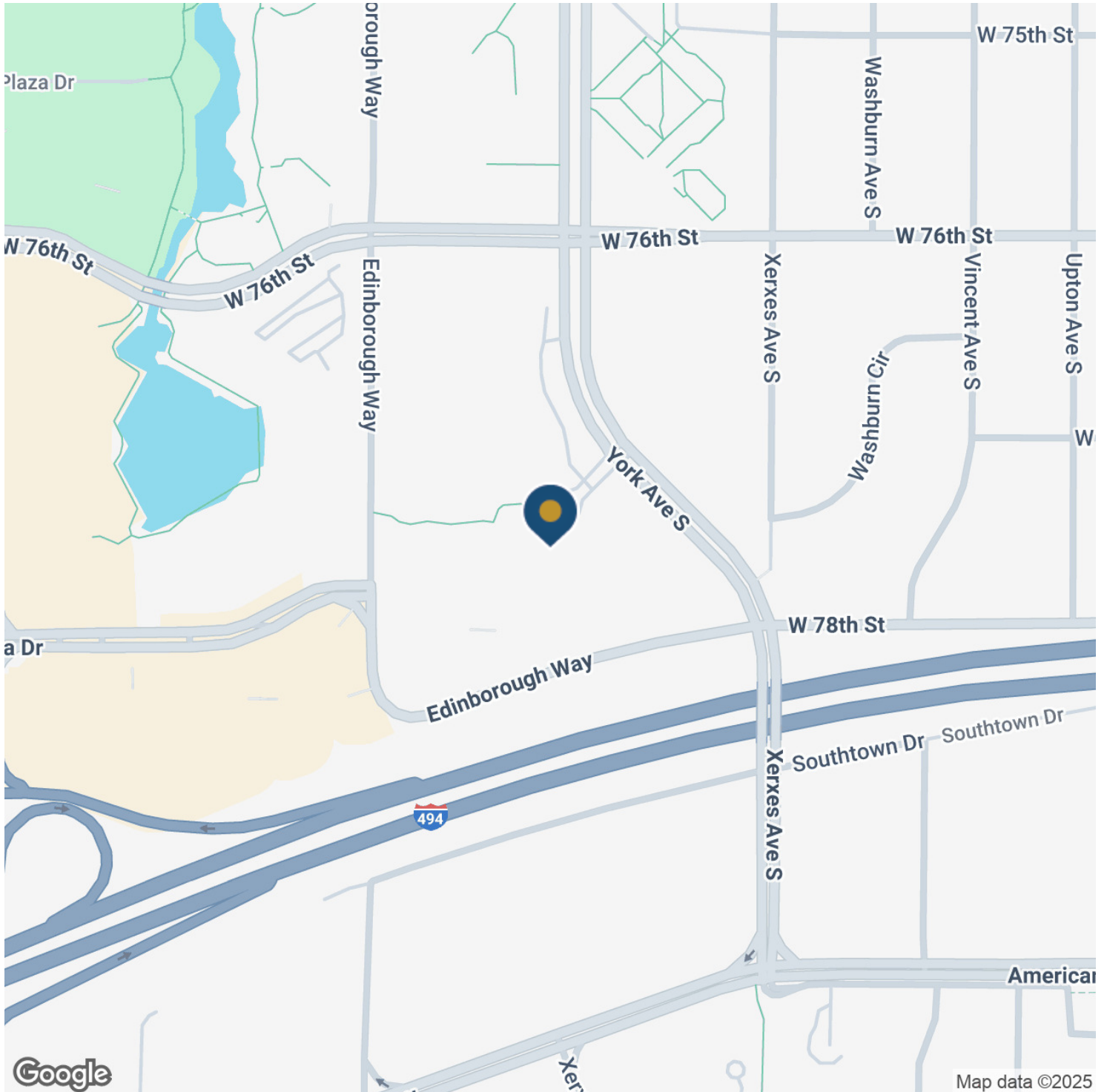
BARRY BIRNBERG

952.820.1673

barry.birnberg@northcocommercial.com

The information above has been obtained from services we believe to be reliable, however, we accept no responsibility for its correctness.

EDINBOROUGH CORPORATE CENTER
3300 EDINBOROUGH WAY , EDINA, MN 55435



BARRY BIRNBERG

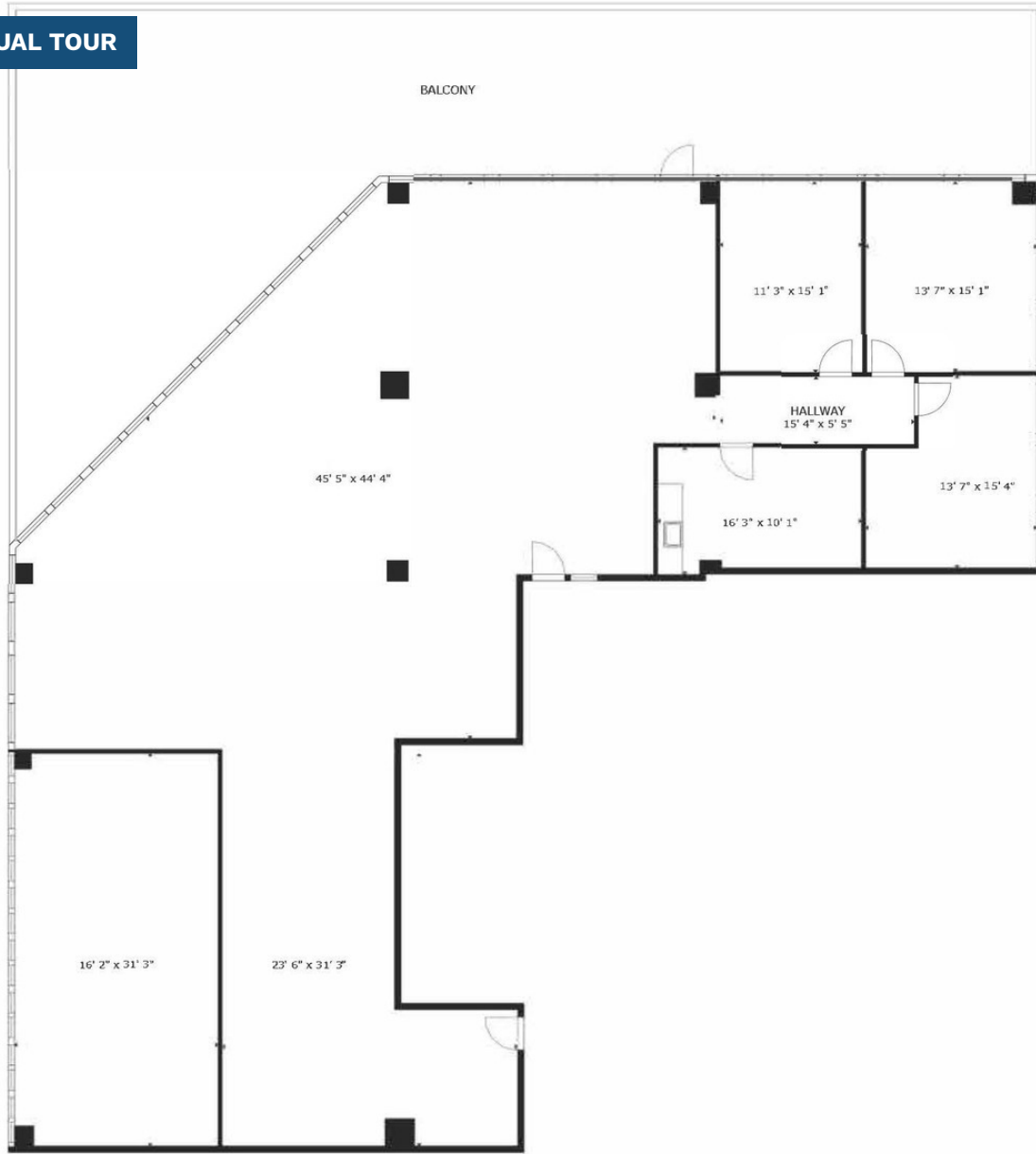
952.820.1673

barry.birnberg@northcocommercial.com

The information above has been obtained from services we believe to be reliable, however, we accept no responsibility for its correctness.

360° VIRTUAL TOUR

(Not to Scale)



FLOOR PLAN

BALCONY NOT DRAWN CORRECTLY

See link for virtual tour: <https://my.matterport.com/show/?m=PTS8Hn1Jd5K>

SIZES AND DIMENSIONS ARE APPROXIMATE, ACTUAL MAY VARY.

BARRY BIRNBERG

952.820.1673

barry.birnberg@northcocommercial.com

The information above has been obtained from services we believe to be reliable, however, we accept no responsibility for its correctness.