

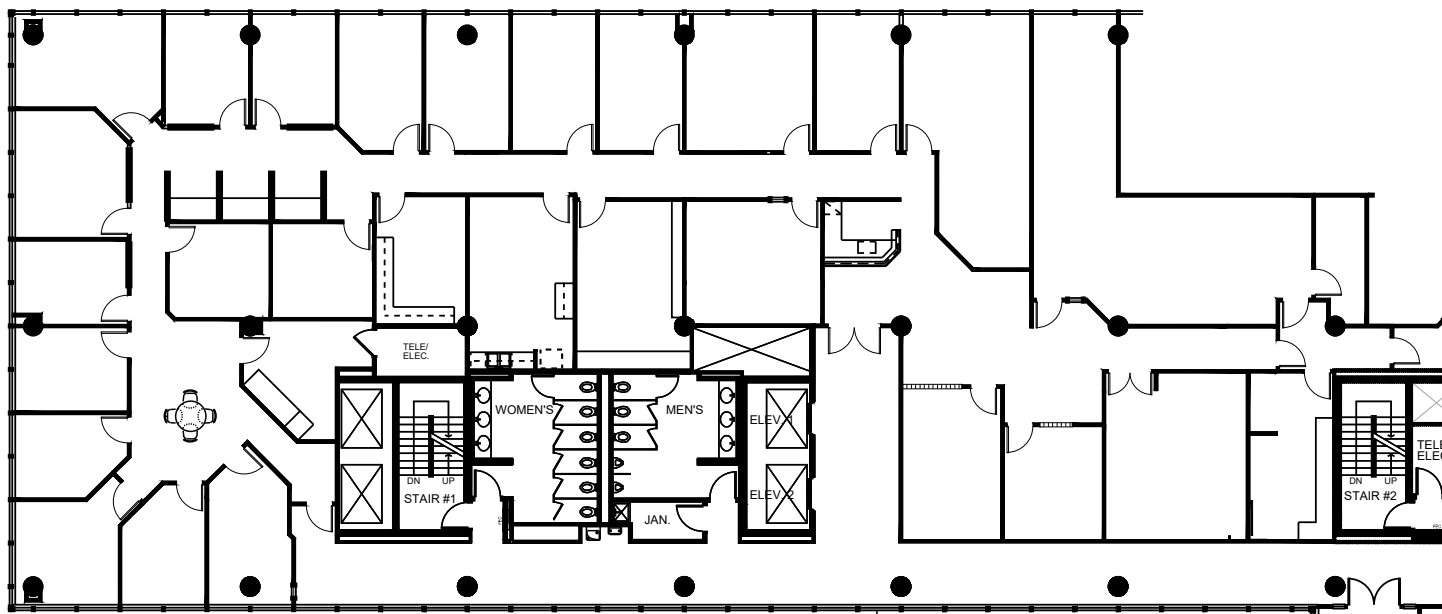
OFFICE SPACE FOR LEASE

455 SHERMAN STREET

DENVER, COLORADO 80203

SUITE 500
±9,027 RSF

AVAILABLE
Q4 2026



| SUITE | SIZE | LAYOUT | AVAILABILITY |
|-------|-----------|---|-------------------|
| 500 | ±9,027 SF | Office intensive buildout with all offices on glass | Available Q4 2026 |

JR BITZER

303 501 8778
jrbitzer@lee-associates.com