

FOR SALE

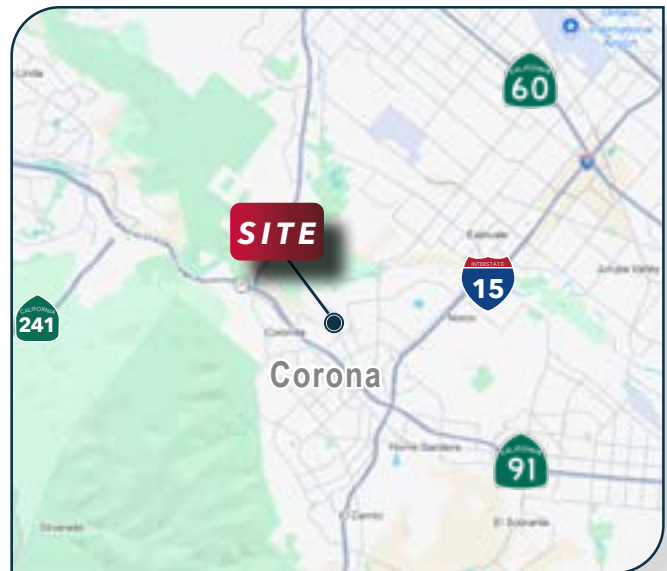
±18,277 SF FREESTANDING
INDUSTRIAL BUILDING

1821 RAILROAD ST
Corona, CA 92880



PROPERTY HIGHLIGHTS

- High-Image Freestanding Building
- Excellent Manufacturing Facility
- 800 Amps | 277/480 Volt Distributed Power
- Large Fenced Yard
- West Corona Location
- Situated On ±1.28 Acre Site
- M2 Zoning
- Shop Restrooms On-Site
- Fire Sprinklered



Pat Delaney, CCIM

Principal | Lee & Associates - Orange

D: 714.564.7127

C: 714.742.7940

DRE# DRE# 00962861

pdelaney@lee-associates.com

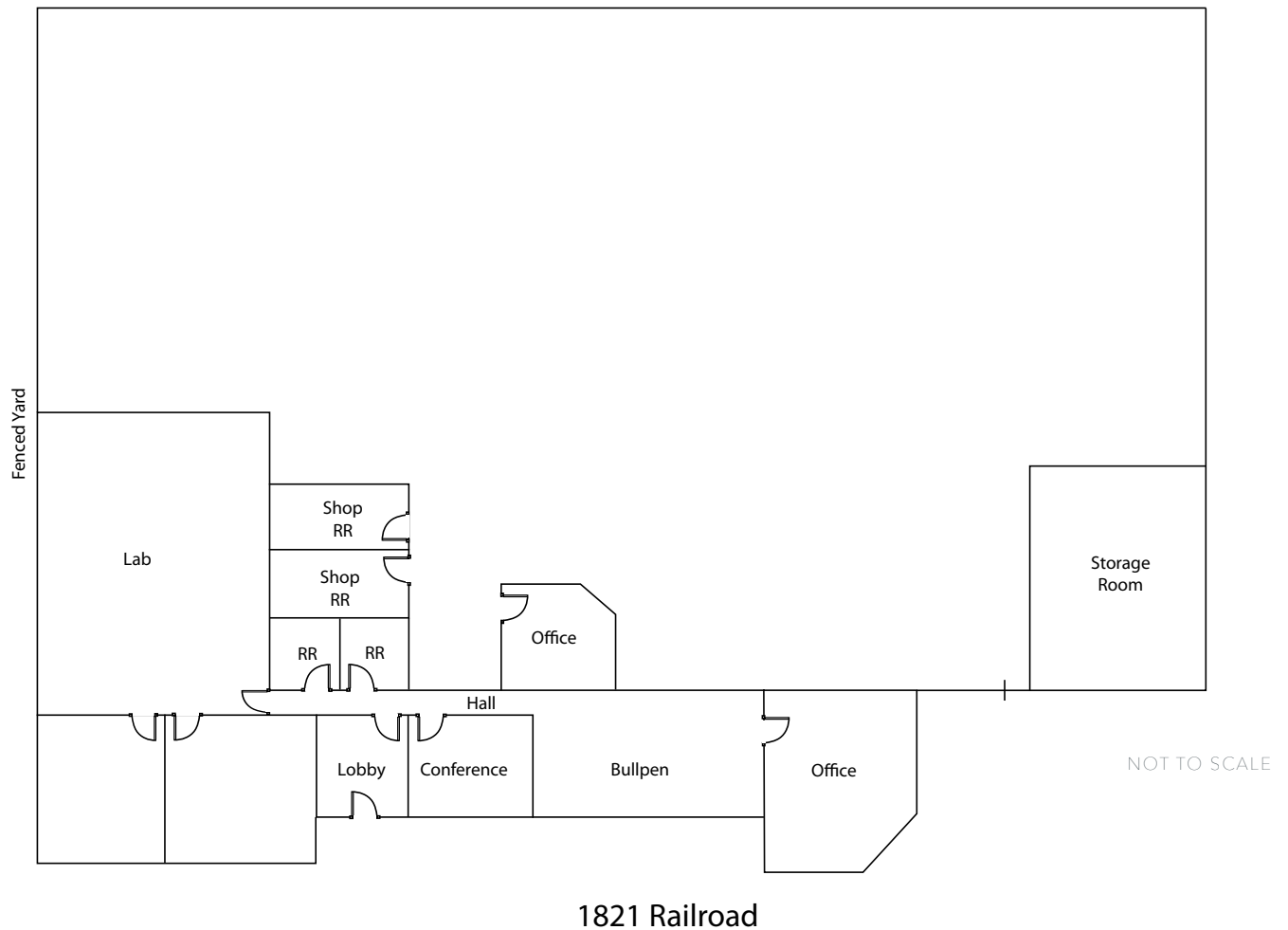
**LEE &
ASSOCIATES**
COMMERCIAL REAL ESTATE SERVICES

FOR SALE

±18,277 SF FREESTANDING
INDUSTRIAL BUILDING

1821 RAILROAD ST
Corona, CA 92880

FLOOR PLAN



Pat Delaney, CCIM

Principal | Lee & Associates - Orange

D: 714.564.7127

C: 714.742.7940

DRE# DRE# 00962861

pdelaney@lee-associates.com



FOR SALE

±18,277 SF FREESTANDING
INDUSTRIAL BUILDING

1821 RAILROAD ST
Corona, CA 92880

AERIAL



ALL INFORMATION CONTAINED HEREIN HAS BEEN PROVIDED BY SELLER, LANDLORD, AND/OR THIRD PARTIES, BUT HAS NOT BEEN INDEPENDENTLY VERIFIED BY LEE & ASSOCIATES OR ITS AGENT(S). BUYER, TENANT AND/OR INTERESTED PARTIES SHOULD INDEPENDENTLY VERIFY ALL INFORMATION COMMUNICATED BY THESE SOURCES.



Pat Delaney, CCIM

Principal | Lee & Associates - Orange

D: 714.564.7127

C: 714.742.7940

DRE# DRE# 00962861

pdelaney@lee-associates.com

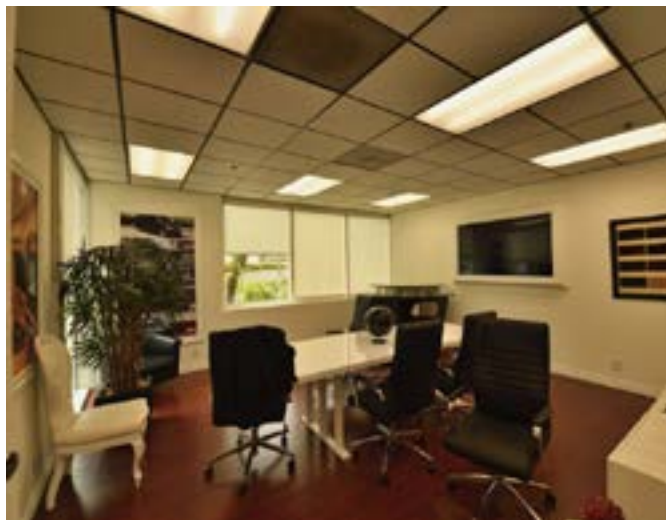
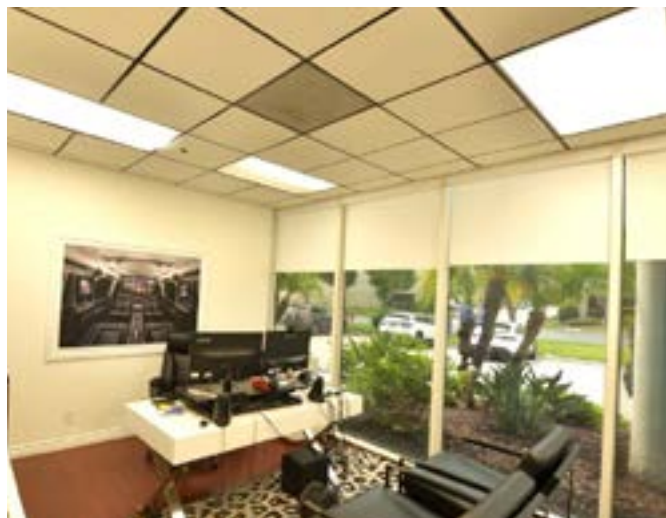


FOR SALE

±18,277 SF FREESTANDING
INDUSTRIAL BUILDING

1821 RAILROAD ST
Corona, CA 92880

INTERIOR



ALL INFORMATION CONTAINED HEREIN HAS BEEN PROVIDED BY SELLER, LANDLORD, AND/OR THIRD PARTIES, BUT HAS NOT BEEN INDEPENDENTLY VERIFIED BY LEE & ASSOCIATES OR ITS AGENT(S). BUYER, TENANT AND/OR INTERESTED PARTIES SHOULD INDEPENDENTLY VERIFY ALL INFORMATION COMMUNICATED BY THESE SOURCES.



Pat Delaney, CCIM

Principal | Lee & Associates - Orange

D: 714.564.7127

C: 714.742.7940

DRE# DRE# 00962861

pdelaney@lee-associates.com

**LEE &
ASSOCIATES**
COMMERCIAL REAL ESTATE SERVICES