

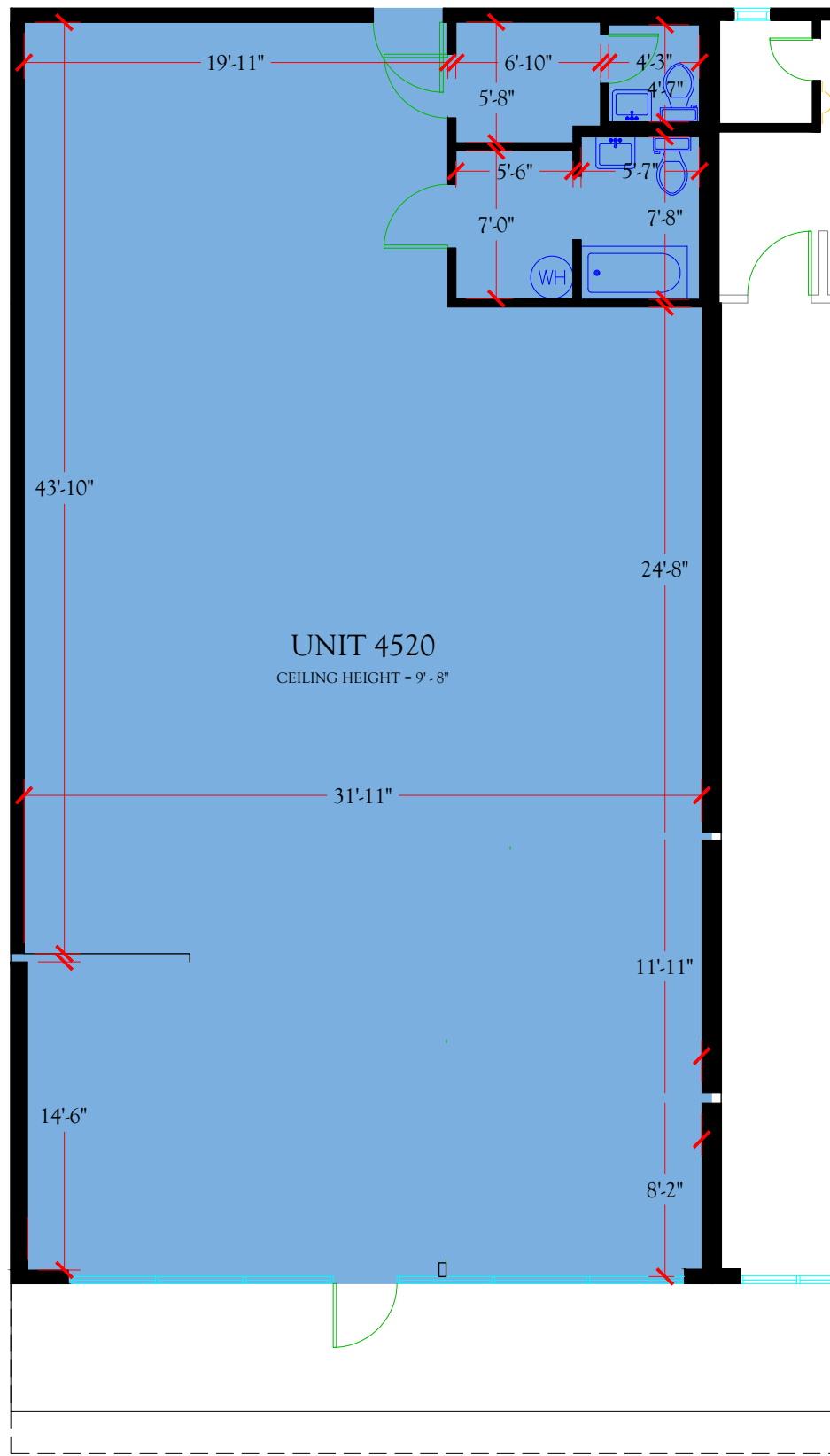
RETAIL PROPERTY
Unit 4520
BOMA Area Analysis

Gross Leasable Area = 1,976 SF

STATEMENT OF COMPLIANCE

This plan complies with the Retail Buildings: Standard Methods of Measurement (ANSI/BOMA Z65.5 - 2010), for the measurement of BOMA Gross Leasable Area (GLA).

KEY PLAN



UNIT 4520
Retail Property
4520-4526 West Kennedy Boulevard, Tampa, FL 33609



CLIENT:
ALPHA GROUP FINANCIALS, LLC
120 South Edison Boulevard
Tampa, FL 33606



3853 Northdale Boulevard, Suite 360
Tampa, Florida 33624
Toll Free: 1-800-971-2882
Internet: www.DimensionsPlusInc.com

DRAWING TITLE:
RETAIL PROPERTY
Unit 4520
BOMA Occupant Area Plan

DATE: 02.22.19
SCALE: 1/8" = 1'-0"
DRAWING NUMBER
I-4520