

DRIVE TOWER

LEHI | UTAH

ICONIC
MODERN
CLASS A
OFFICE
SPACE FOR
LEASE

3333 NORTH
DIGITAL DRIVE




Jones Lang LaSalle Brokerage, Inc.

space details

available space

Suite 230: 3,746 RSF

Suite 400: 4,226 RSF

Suite 500: 10,757 RSF

lease rate

\$30.00 FSG

building size

70,416 SF

parking ratio

4/1,000

year built

2016

available date

NOW

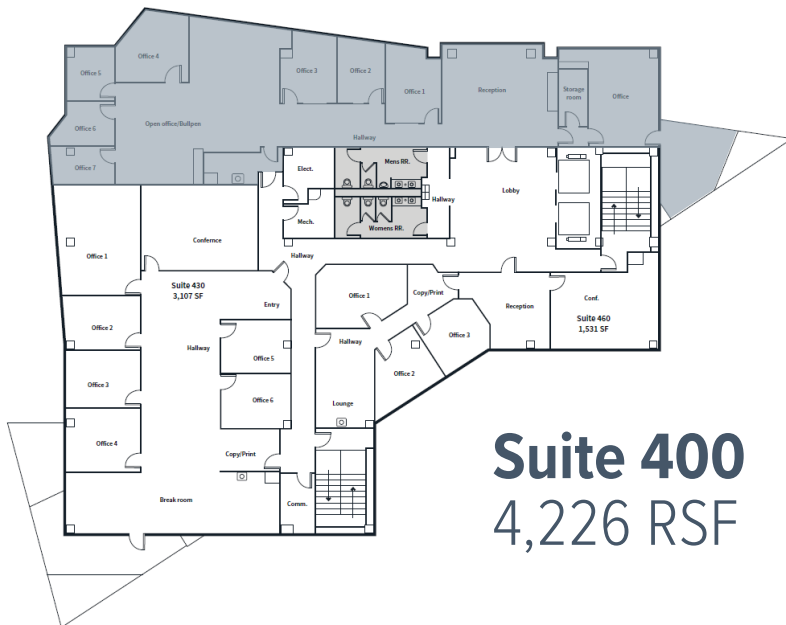
floor plans



Suite 230
3,746 RSF



Suite 500
10,757 RSF



Suite 400
4,226 RSF

a destination for work and play



STATE OF THE ART
seven story modern
glass tower



AMAZING
mountain and
valley views



AMPLE
underground
parking



ON SITE
fitness
center



UNMATCHED
visibility and
access to I-15



DESIRABLE
eastside
location



WALKABLE
to an abundance of amenities,
restaurants and shops



MODERN
and highly prominent
North Lehi location





**DRIVE
TOWER**
LEHI | UTAH



- RESTAURANTS
- SHOPPING
- HOTELS + SERVICES



W 11000 N

**DRIVE
TOWER**
LEHI | UTAH



David Nixon
+ 1 801 456 9518
david.nixon@jll.com

Bronson Rawlins
+ 1 801 456 9513
bronson.rawlins@jll.com