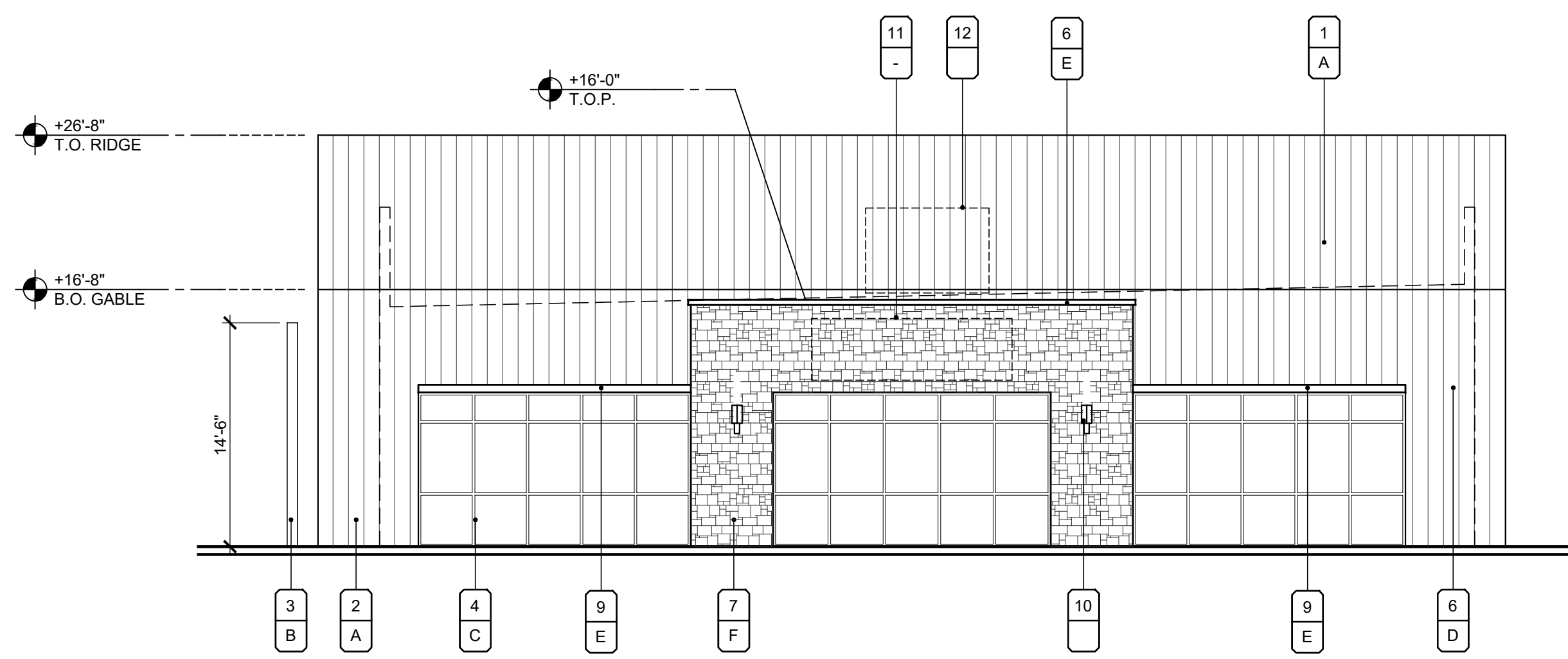


A WEST ELEVATION - FRONT
SCALE: 1/8"=1'-0"



B NORTH ELEVATION - END
SCALE: 1/8"=1'-0"

MATERIAL/COLOR SCHEDULE

MATERIALS	
1. METAL ROOF BY ATAS.	
2. METAL SIDING BY ATAS.	
3. STEEL FRAME - PAINTED .	
4. ALUMINUM STOREFRONT BY OLD CASTLE.	
5. SMOOTH FINISH STUCCO.	
6. METAL COPING.	
7. ADHEREARED STONE VENEER BY ELDORADO STONE.	
8. FIBER CEMENT PANEL BY NICHIIA	
9. METAL AWNING.	
10. LIGHT FIXTURE.	
11. POSSIBLE SIGN LOCATION.	
12. LINE OF MECHANICAL UNIT BEYOND	

COLORS	
METAL ROOF AND SIDING	
A. 01 "CLASSIC BRONZE" BY ATAS	MATERIAL #
	FINISH X
PAINTED STEEL	
B. SW 6990 - "CAVIAR"	
ALUMINUM STOREFRONT	
C. BRONZE 740 - DARK RANGE BY OLD CASTLE	
PAINTED STUCCO	
D. SW 7014 - "EIDER" BY SHERWIN WILLIAMS	
PAINTED METAL	
E. 01 "CLASSIC BRONZE" BY ATAS	
ADHEREARED STONE VENEER	
F. "CASA BLANCA - ROUGHOUT" BY ELDORADO STONE	
FAUX WOOD SIDING	
G. "SPRUCE" EPC766F - VINTAGE WOOD BY NICHIIA	

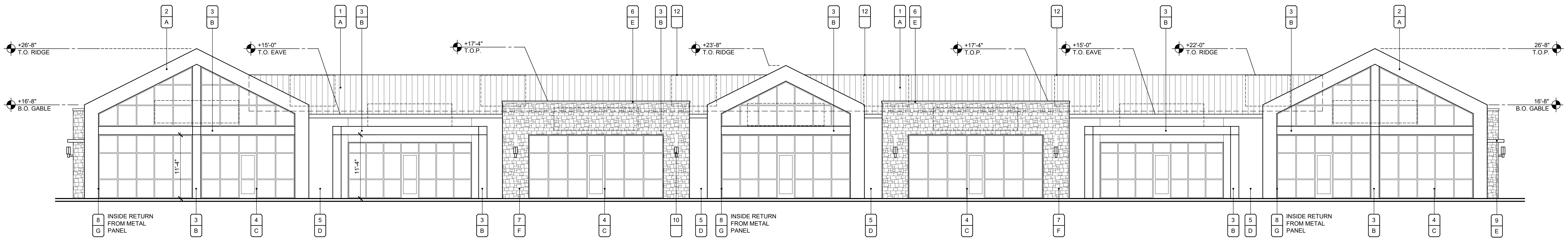


CARDER DEVELOPMENT
26214 S. ELLSWORTH RD
QUEEN CREEK, AZ 85142

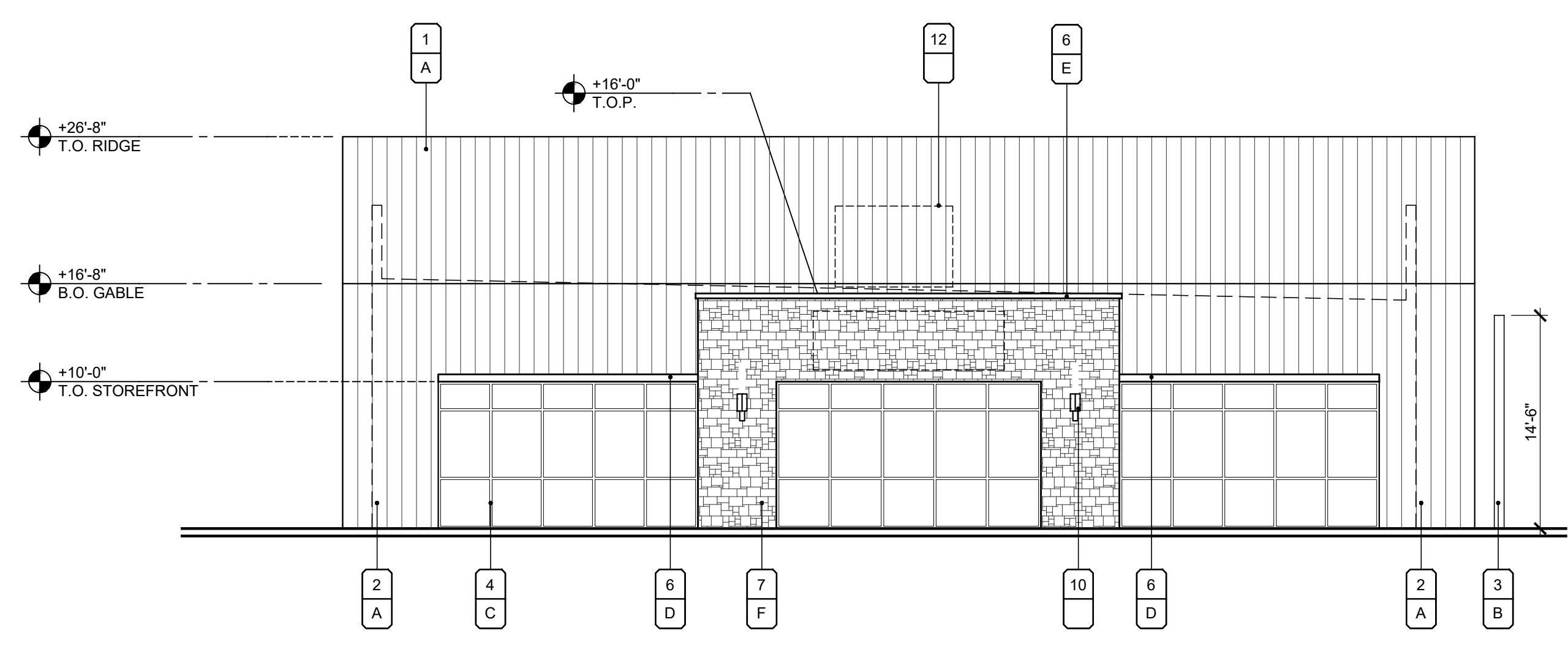


UPWARD ARCHITECTS

1155 W. Rio Salado Parkway, Suite B-101
Tempe, AZ 85281
Ph 602.753.5222 www.upwardarchitects.com



A EAST ELEVATION - REAR
SCALE: 1/8"=1'-0"



B SOUTH ELEVATION - END
SCALE: 1/8"=1'-0"

MATERIAL/COLOR SCHEDULE

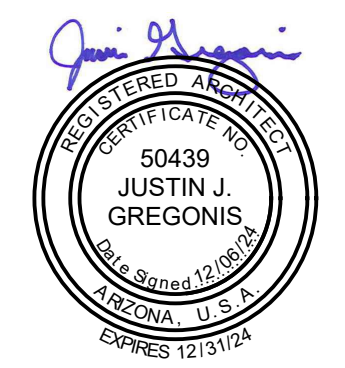
MATERIALS	
1. METAL ROOF BY ATAS	
2. METAL SIDING BY ATAS	
3. STEEL FRAME - PAINTED	
4. ALUMINUM STOREFRONT BY OLDCASTLE	
5. SMOOTH FINISH STUCCO	
6. METAL COPING	
7. ADHEREARED STONE VENEER BY ELDORADO STONE	
8. FIBER CEMENT PANEL BY NICHIIA	
9. METAL AWNING	

COLORS	
METAL ROOF AND SIDING	
A. 01 "CLASSIC BRONZE" BY ATAS	MATERIAL # FINISH X
PAINTED STEEL	
B. SW 6990 - "CAVIAR"	
ALUMINUM STOREFRONT	
C. BRONZE 740 - DARK RANGE BY OLD CASTLE	
PAINTED STUCCO	
D. SW 7014 - "EIDER" BY SHERWIN WILLIAMS	
PAINTED METAL	
E. 01 "CLASSIC BRONZE" BY ATAS	
ADHEREARED STONE VENEER	
F. "CASA BLANCA - ROUGHOUT" BY ELDORADO STONE	
FAUX WOOD SIDING	
G. "SPRUCE EPC7667 - VINTAGE WOOD" BY NICHIIA	



CARDER DEVELOPMENT
26214 S. ELLSWORTH RD
QUEEN CREEK, AZ 85142

12.06.2024
PROJECT NO. 23082



UPWARD ARCHITECTS
1155 W. Rio Salado Parkway, Suite B-101
Tempe, AZ 85281
Ph 602.753.5222 www.upwardarchitects.com



A WEST ELEVATION - FRONT
SCALE: 1/8"=1'-0"



B NORTH ELEVATION - END
SCALE: 1/8"=1'-0"

MATERIAL/COLOR SCHEDULE

MATERIALS	
1.	METAL ROOF BY ATAS.
2.	METAL SIDING BY ATAS.
3.	STEEL FRAME - PAINTED.
4.	ALUMINUM STOREFRONT BY OLD CASTLE.
5.	SMOOTH FINISH STUCCO.
6.	METAL COPING.
7.	ADHEREARED STONE VENEER BY ELDORADO STONE.
8.	FIBER CEMENT PANEL BY NICHIIA
9.	METAL AWNING.

COLORS	
METAL ROOF AND SIDING	MATERIAL #
A. 01 "CLASSIC BRONZE" BY ATAS	FINISH X
PAINTED STEEL	
B. SW 6990 - "CAVIAR"	
ALUMINUM STOREFRONT	
C. BRONZE 740 - DARK RANGE BY OLD CASTLE	
PAINTED STUCCO	
D. SW 7014 - "EIDER WHITE" BY SHERWIN WILLIAMS	
PAINTED METAL	
E. 01 "CLASSIC BRONZE" BY ATAS	
ADHEREARED STONE VENEER	
F. "CASA BLANCA - ROUGH CUT" BY ELDORADO STONE	
FAUX WOOD SIDING	
G. "SPRUCE" EPC766F - VINTAGE WOOD BY NICHIIA	

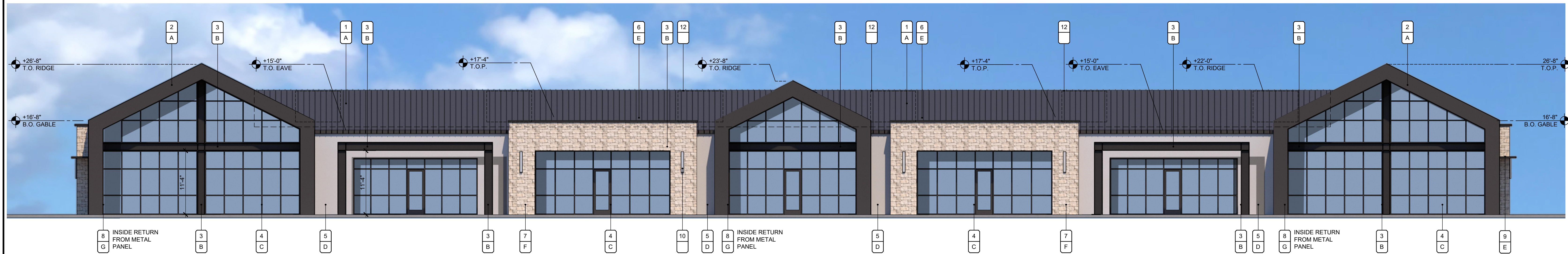


CARDER DEVELOPMENT
26214 S. ELLSWORTH RD
QUEEN CREEK, AZ 85142

12.06.2024
PROJECT NO. 23082



UPWARD ARCHITECTS
1155 W. Rio Salado Parkway, Suite B-101
Tempe, AZ 85281
Ph 602.753.5222 www.upwardarchitects.com



A EAST ELEVATION - REAR
SCALE: 1/8"=1'-0"



B SOUTH ELEVATION - END
SCALE: 1/8"=1'-0"

MATERIAL/COLOR SCHEDULE

MATERIALS	
1.	METAL ROOF BY ATAS
2.	METAL SIDING BY ATAS
3.	STEEL FRAME - PAINTED
4.	ALUMINUM STOREFRONT BY OLDCASTLE
5.	SMOOTH FINISH STUCCO
6.	METAL COPING
7.	ADHEREARED STONE VENEER BY ELDORADO STONE
8.	FIBER CEMENT PANEL BY NICHIIHA
9.	METAL AWNING

COLORS	
	METAL ROOF AND SIDING A. 01 "CLASSIC BRONZE" BY ATAS
	PAINTED STEEL B. SW 6990 - "CAVIAR"
	ALUMINUM STOREFRONT C. BRONZE 740 - DARK RANGE BY OLD CASTLE
	PAINTED STUCCO D. SW 7014 - "EIDER WHITE" BY SHERWIN WILLIAMS
	PAINTED METAL E. 01 "CLASSIC BRONZE" BY ATAS
	ADHEARED STONE VENEER F. "CASA BLANCA - ROUGH CUT" BY ELDORADO STONE
	FAUX WOOD PANEL G. "SPRUCE" EPC766F - VINTAGE WOOD BY NICHIIHA

CARDER DEVELOPMENT

CARDER DEVELOPMENT
26214 S. ELLSWORTH RD
QUEEN CREEK, AZ 85142



UPWARD ARCHITECTS
1155 W. Rio Salado Parkway, Suite B-101
Tempe, AZ 85281
Ph 602.753.5222 www.upwardarchitects.com



A SOUTH WEST CORNER - PERSPECTIVE
SCALE: NTS

**CARDER
DEVELOPMENT**

CARDER DEVELOPMENT
26214 S. ELLSWORTH RD
QUEEN CREEK, AZ 85142

12.06.2024
PROJECT NO. 23082



**UPWARD
ARCHITECTS**

1155 W. Rio Salado Parkway, Suite B-101
Tempe, AZ 85281
Ph 602.753.5222 www.upwardarchitects.com