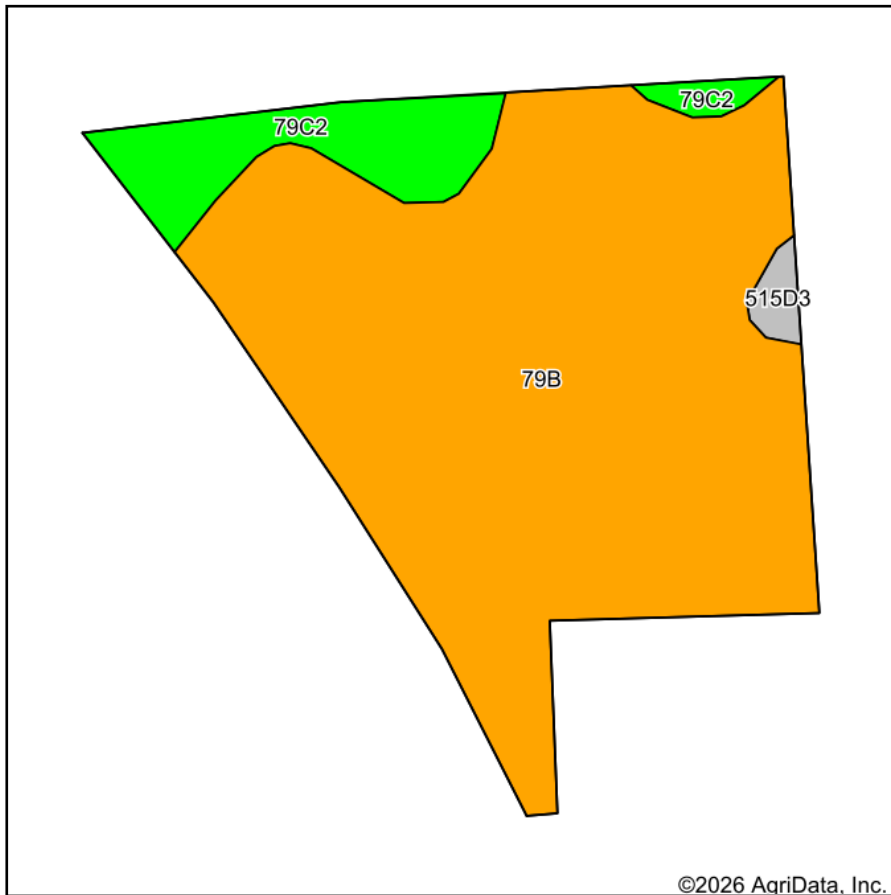
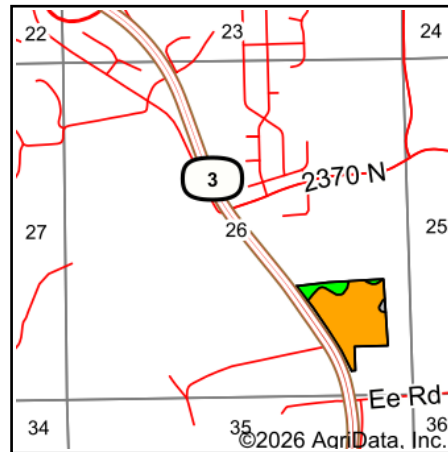


Soils Map



Soils data provided by USDA and NRCS.

©2026 AgriData, Inc.



State: **Illinois**
 County: **Monroe**
 Location: **26-1S-10W**
 Township: **Precinct 21**
 Acres: **25.38**
 Date: **5/14/2026**



Area Symbol: IL133, Soil Area Version: 18

Code	Soil Description	Acres	Percent of field	Il. State Productivity Index Legend	Subsoil rooting ^a	Corn Bu/A	Soybeans Bu/A	Wheat Bu/A	Oats Bu/A ^b	Sorghum ^c Bu/A	Grass-legume ^e hay, T/A	Crop productivity index for optimum management
**79B	Menfro silt loam, 2 to 5 percent slopes	22.19	87.4%		FAV	**162	**50	**62	0	**120	**5.00	**118
**79C2	Menfro silt loam, 5 to 10 percent slopes, eroded	2.87	11.3%		FAV	**153	**47	**59	0	**113	**5.00	**112
**515D3	Bunkum silty clay loam, 10 to 18 percent slopes, severely eroded	0.32	1.3%		FAV	**115	**40	**44	0	**89	**3.00	**87
Weighted Average						160.4	49.5	61.4	*-	118.8	5	116.9

Table: Optimum Crop Productivity Ratings for Illinois Soil EFOTG are sourced from Bulletin 811 calculated Map Unit Base Yield Indices, and adjusted (Adj) for slope, erosion, flooding, and surface texture. Publication Date: 02-08-2023

Crop yields and productivity (B811 EFOTG) are maintained at the following USDA web site: 2023 Illinois Soil Productivity and Yield Indices: <https://efotg.sc.egov.usda.gov/#/state/IL/documents/section=2&folder=52809>

** Base indexes from Bulletin 811 adjusted for slope, erosion, flooding, and surface texture according to the Il. Soils EFOTG

^b Soils in the southern region were not rated for oats and are shown with a zero "0".

^c Soils in the northern region or in both regions were not rated for grain sorghum and are shown with a zero "0".

^e Soils in the well drained group were not rated for grass-legume and are shown with a zero "0".