

OFFICE SPACE FOR LEASE

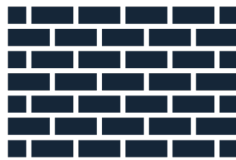
309-325 South Main Street, Pittsburgh, PA 15220 | West End



- 8,500 square feet of beautifully renovated office space located on the second floor with private first floor lobby and elevator
- Mix of private offices and open workspaces
- Full kitchen
- Various conference and breakout rooms
- Exposed brick walls, original timber beams, and character-rich architectural details
- Attractive environment for corporate headquarters, creative office users, technology firms, engineering groups
- Located within Pittsburgh's historic West End, the property benefits from exceptional accessibility to Downtown Pittsburgh, Interstate 376, Route 51, and the region's major transportation networks



**Public
Transportation
Easily Accessible**



**Exposed Brick
and Beams**



**Full
Kitchen**

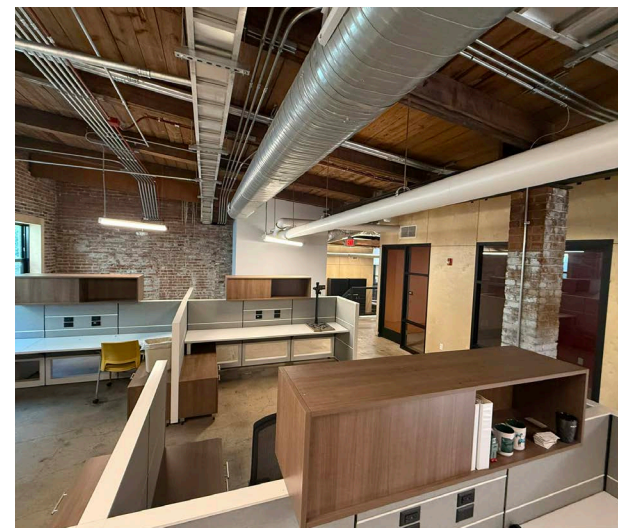
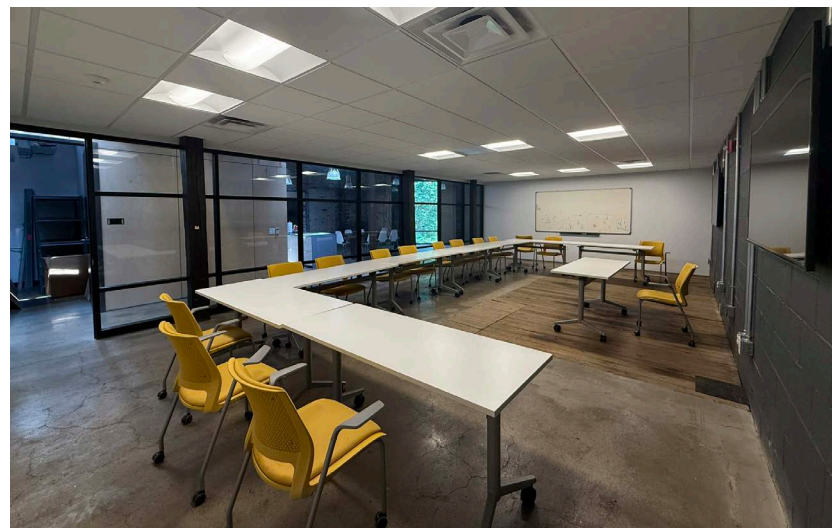
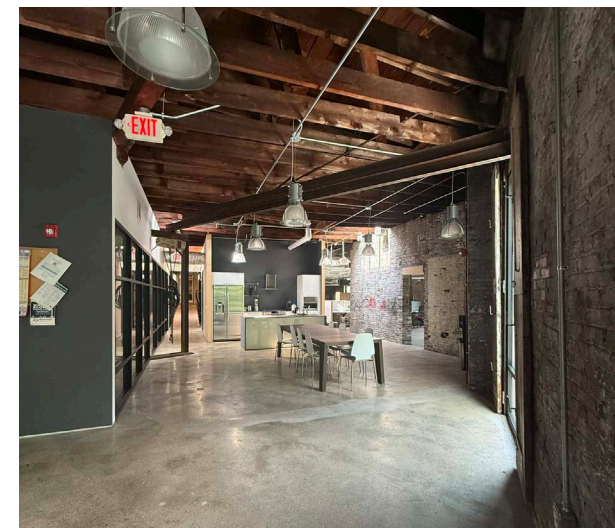
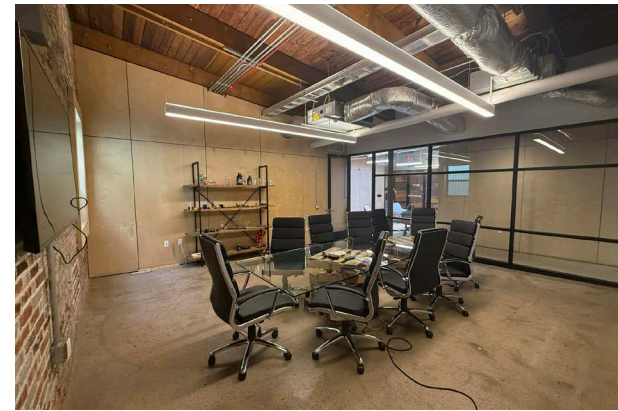
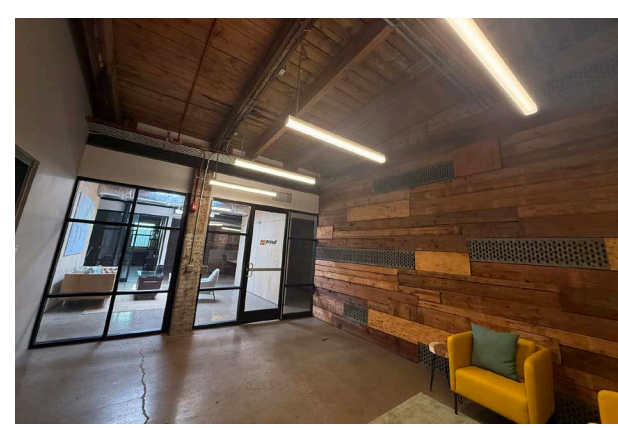
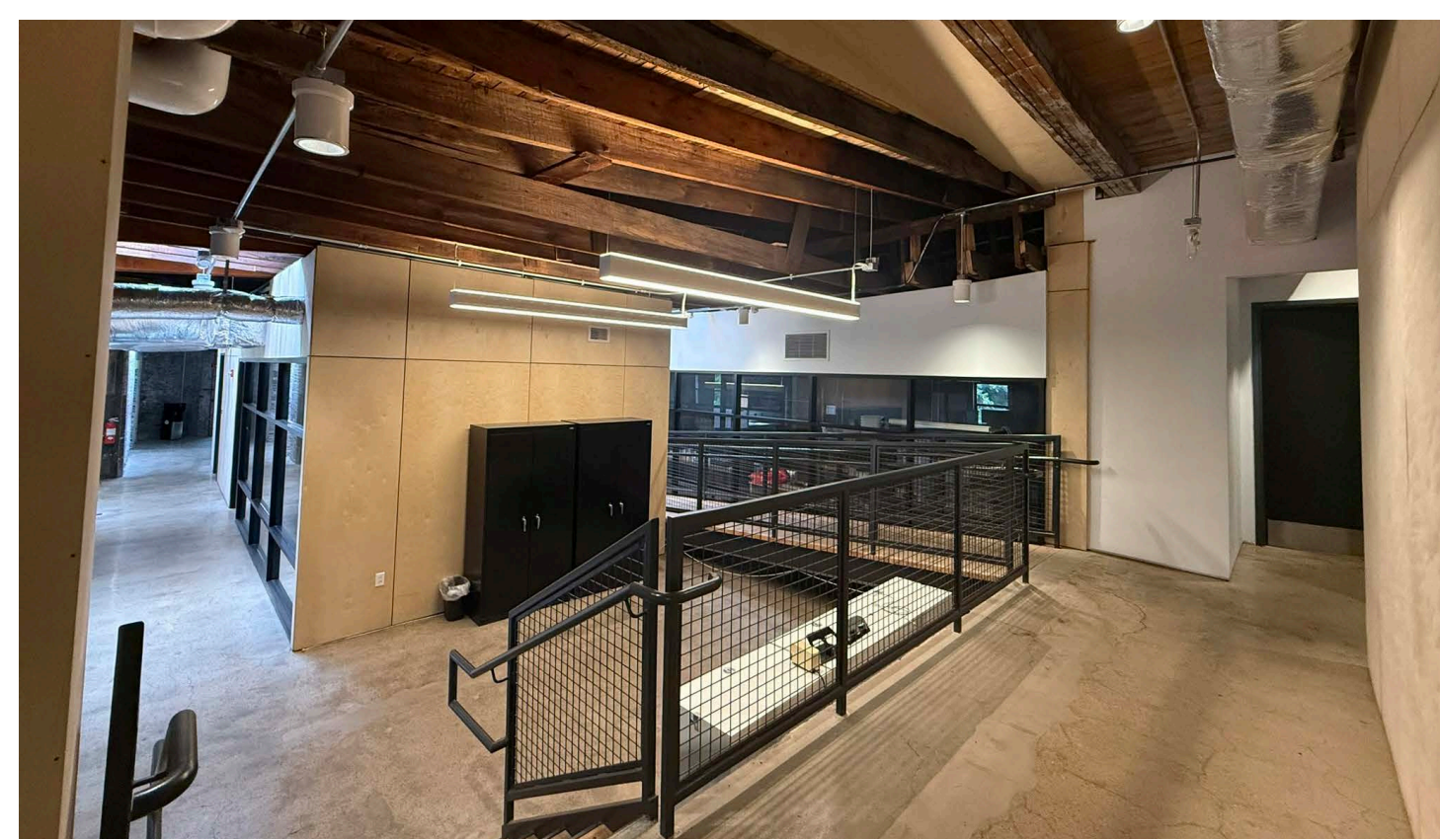
JOHN JACKSON

john@legacyrealtypgh.com
412.866.LGCY (5429)

TOMMY MCCAFFERTY

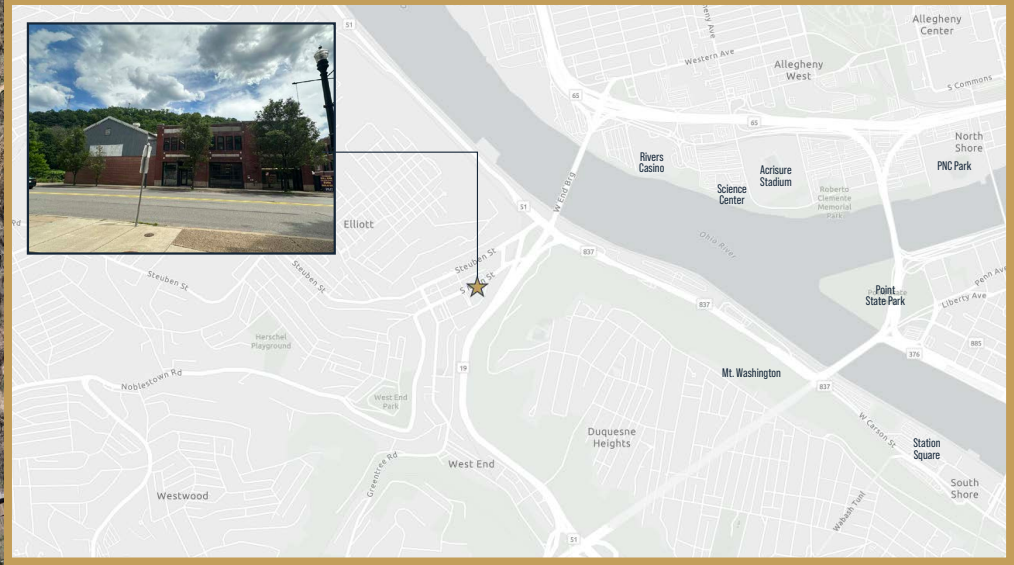
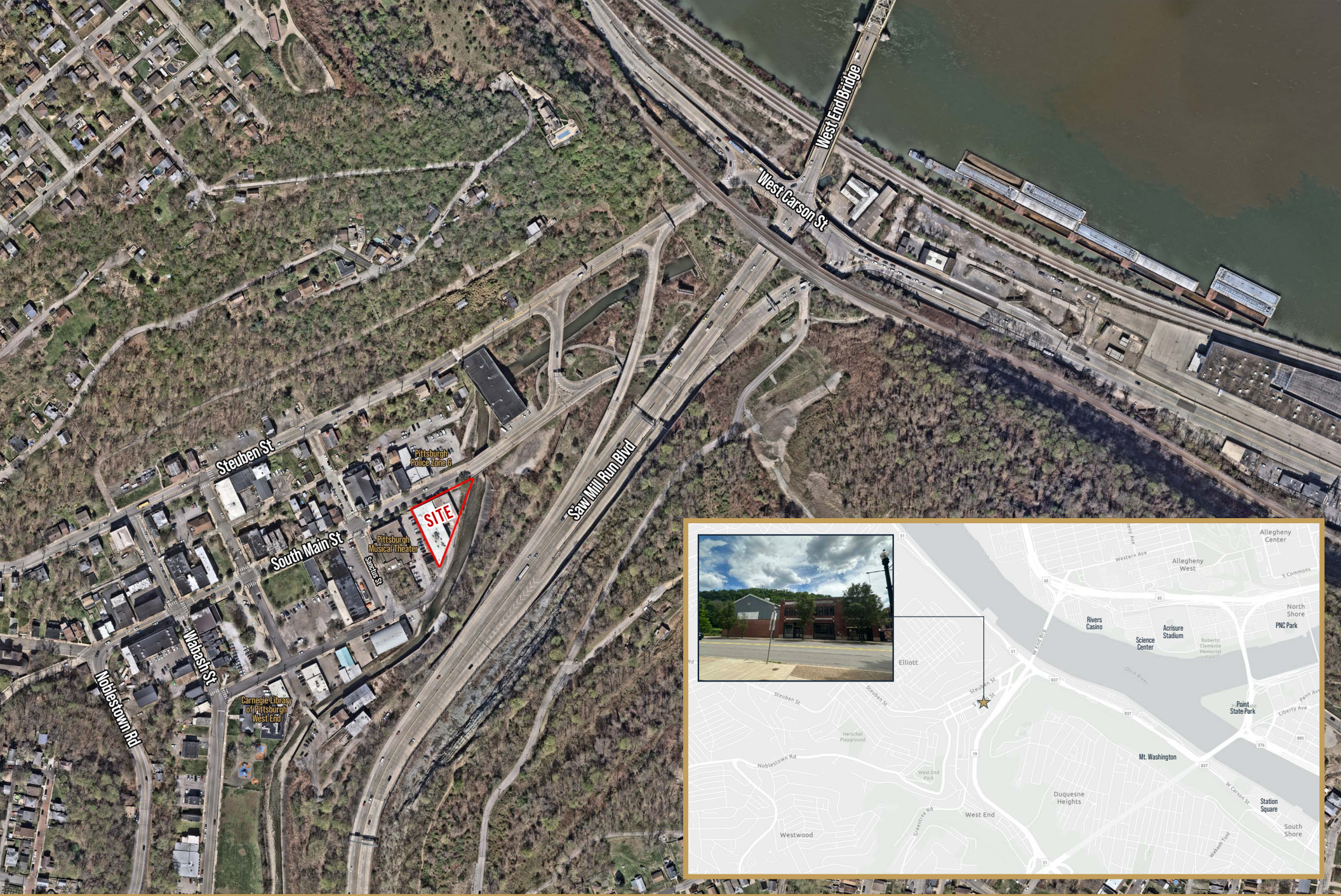
tommy@legacyrealtypgh.com
412.866.LGCY (5429)

LEGACY
REALTY PARTNERS



SPACE PHOTOS

LEGACY
REALTY PARTNERS



© 2026 Legacy Realty Partners. All rights reserved. The information provided has been obtained from sources deemed reliable but has not been verified for accuracy or completeness. It is recommended that you conduct a thorough, independent investigation of the property and verify all details. Any reliance on this information is at your own risk. Legacy Realty Partners and the Legacy Realty Partners logo are trademarks of Legacy Realty Partners, Inc. All other trademarks displayed in this document belong to their respective owners, and the use of these logos does not imply any affiliation with or endorsement by Legacy Realty Partners. The photos contained herein are the property of their respective owners. Unauthorized use of these images is prohibited without the explicit written consent of the owner.