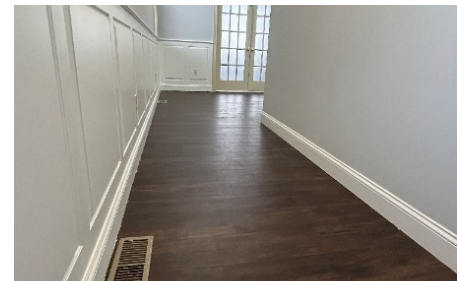
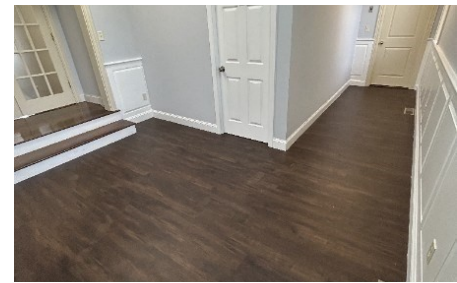




Just Listed



***** BEDROOMS



BATHROOMS

 **\$3,000**

About the property

Versatile 1,800 SF commercial suite located just off Route 1 in Attleboro's busy business district with excellent traffic and visibility. Previously used as a massage spa and prior to that, a law office. Ideal space for office, medical, wellness, or service-based businesses. Features include multiple offices, conference space, reception area, kitchenette, storage, and 2 bathrooms. Equipped with central air and oil heat. Offers front and side entrances and up to 4+ parking spaces. Convenient to train station and major highways. Space can be subdivided. Great opportunity to customize and position your business in a high-exposure location! Schedule your showing today...vacant and easy to show.

Status: New

MLS #: 73503718

Property Type: Commercial Lease

Residence Year Built: 1905

Sq ft total: *****

County: Bristol



Jessica Azzi

Agent partner

(508) 517-4594

jazzi@laerrealty.com

www.laerrealty.com

609 Newport Ave
Attleboro, MA 02703