



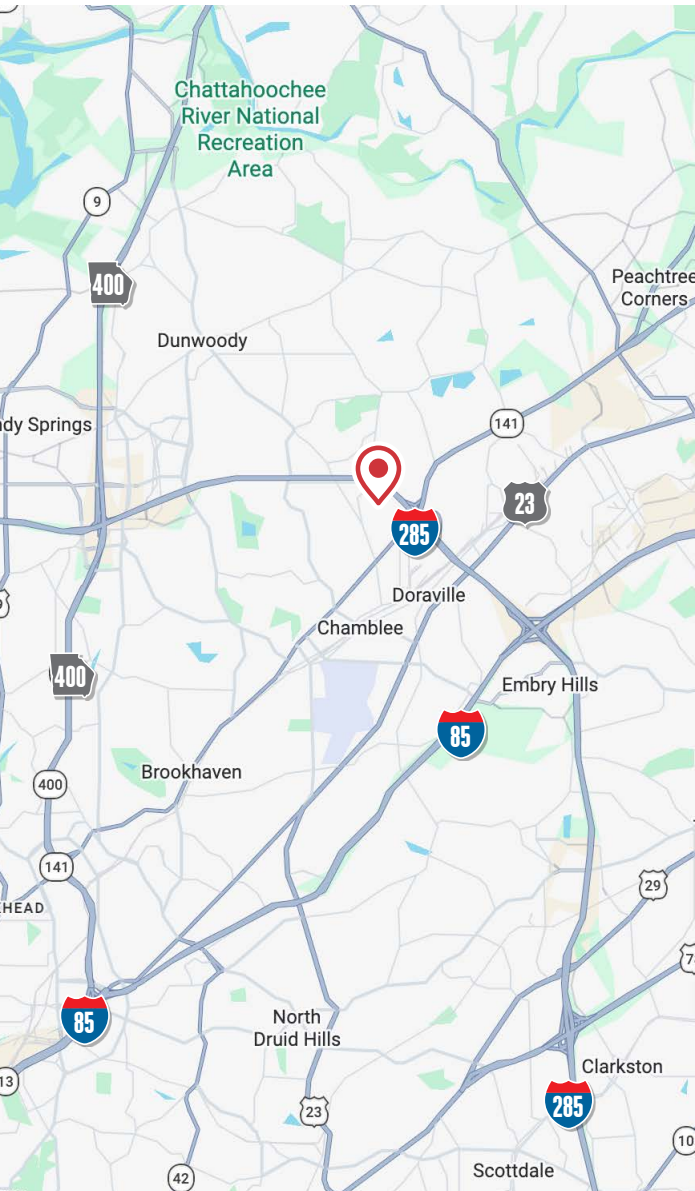
PERIMETER PARK

BUSINESS CENTER

← 2358

2337 →

300 MOSAIC Group	350 Geocomp, Inc.	200 Hummingbird Family
301 Kopp Concepts	370 Alpha Roofing	210 Cahill-Stout, Inc.
310 Image360	380 UBIF Snellville	215 MGS Contracting
360 Geocomp Co/ Geo Testing Express	390 Binery Scientific	



NAI Brannen Goddard

2337 & 2358 PERIMETER PARK DR.
Atlanta, Georgia 30341

**FOR LEASE
AVAILABLE**

FLEX SPACE

PROPERTY FEATURES

- Grade level drive-ins
- Attractively landscaped in park-like setting
- City of Chamblee
- Parking Ratio: 2.5/1,000 SF

LOCATION HIGHLIGHTS

- Easy access to I-285, I-85, and Highway 141
- Conveniently located 3.5 miles from Perimeter Mall area, as well as a large selection of dining, shopping, and professional service options
- Close proximity to both Doraville and Chamblee Marta stations
- Abundant multi-housing developments within walking distance

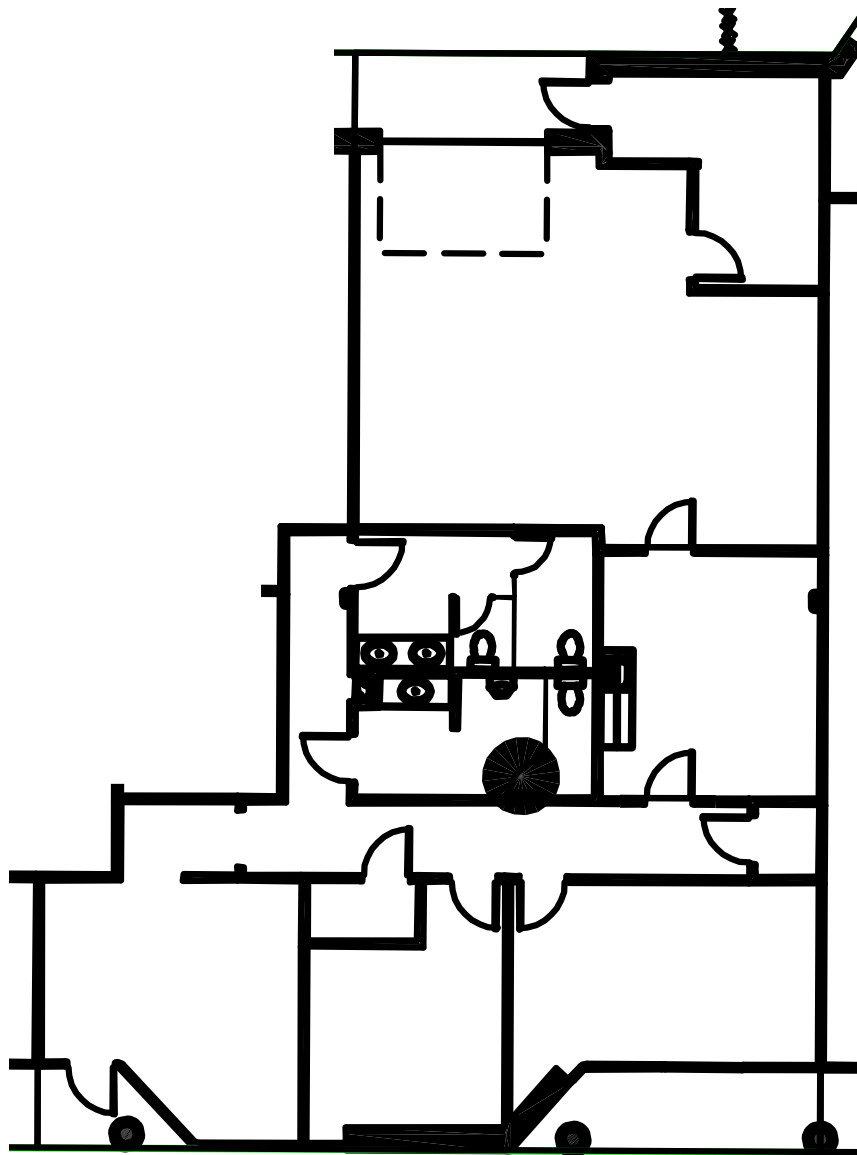
Mark Verryth

404 812 4034
mverryth@naibg.com

Kayte Giralt

404 812 4000
kgiralt@naibg.com

KING Building, 6 Concourse Parkway, Suite 1900, Atlanta, GA 30328, 404 812 4000, NAIBG.COM
©NAI Brannen Goddard. Information is deemed from reliable sources. No warranty is made as to its accuracy.



SUITE 370

Warehouse	925 SF
Office	1,672 SF
Total	2,597 SF

PROPERTY HIGHLIGHTS

- 1 Grade Level Drive-in Door

KEY

