



WHITELAND
65 LOGISTICS
CENTER

SOUTHWEST CORNER OF
I-65 AND WHITELAND ROAD



Your **launchpad** for industrial success

Discover unparalleled opportunity at Whiteland 65 Logistics Center, a premier industrial development strategically located in Whiteland, Indiana.

This expansive site offers a blank canvas for forward-thinking businesses to create their ideal operational space through build-to-suit solutions.

Positioned with excellent access to Interstate 65, this logistics center provides the perfect foundation for companies seeking to optimize their supply chain and distribution networks in the heart of the Midwest. With flexible land parcels and the

ability to customize facilities to exact specifications, Whiteland 65 Logistics Center empowers businesses to design and construct buildings that precisely meet their unique requirements.

Whether you're a growing e-commerce enterprise, a manufacturing powerhouse, or a logistics innovator, this development offers the space, location, and adaptability to turn your industrial vision into reality.





➤ **Class A**

build-to-suit opportunities allow for complete customization

➤ **Rare**

outdoor storage opportunity

➤ **Direct access**

and visibility to I-65 (+186,000 vpd), one of Indianapolis' most heavily traveled interstates stretching from southern Alabama to the northern tip of Indiana

➤ **Tax abatement**

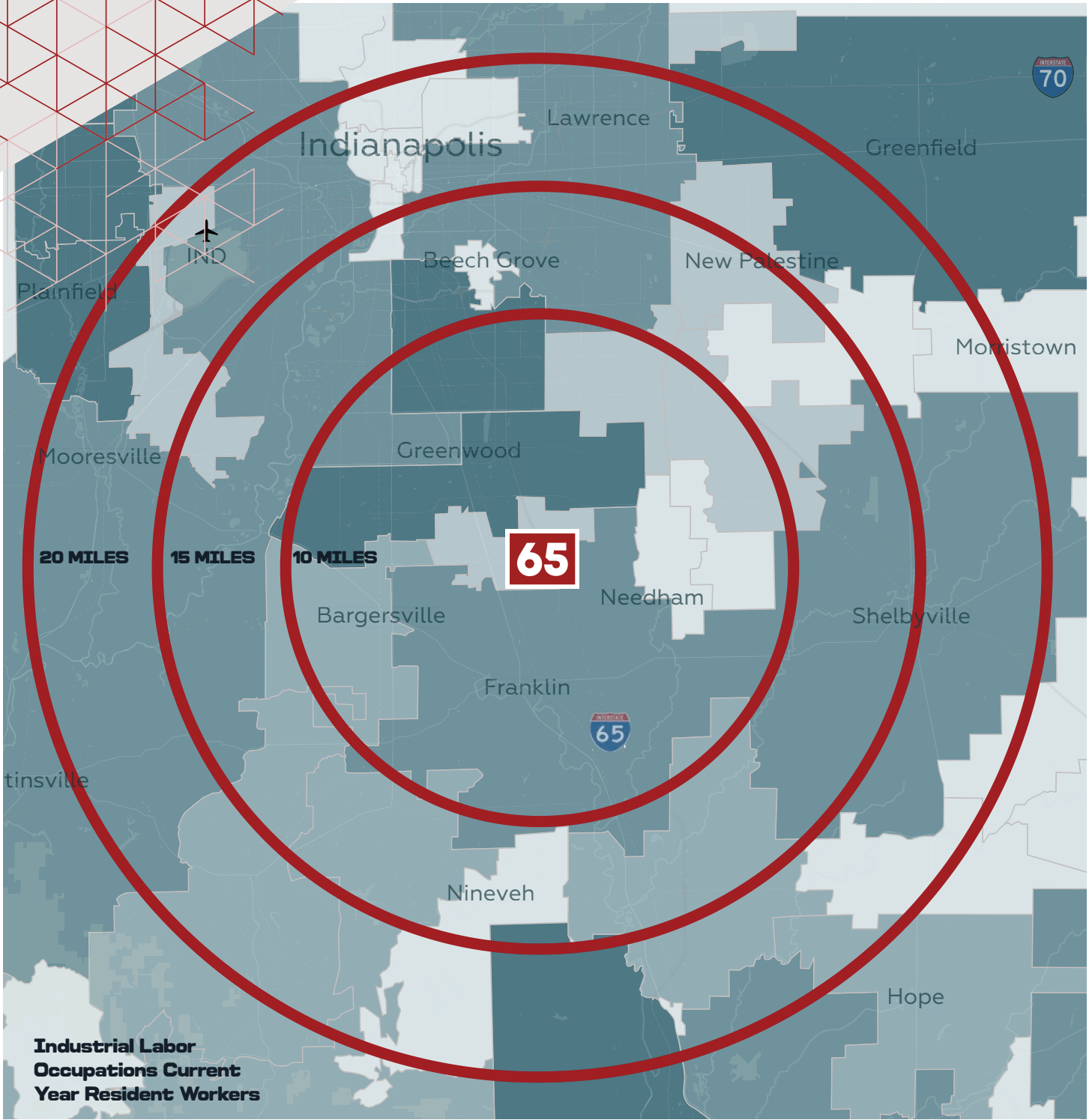
10 year

➤ **High-growth**

industrial market

➤ **Neighboring companies**

include Amazon, DHL, Cummins, Amcor and more



- 0-474
- 475-1,333
- 1,334-2,638
- 2,638-4,391
- 4,392-7,691

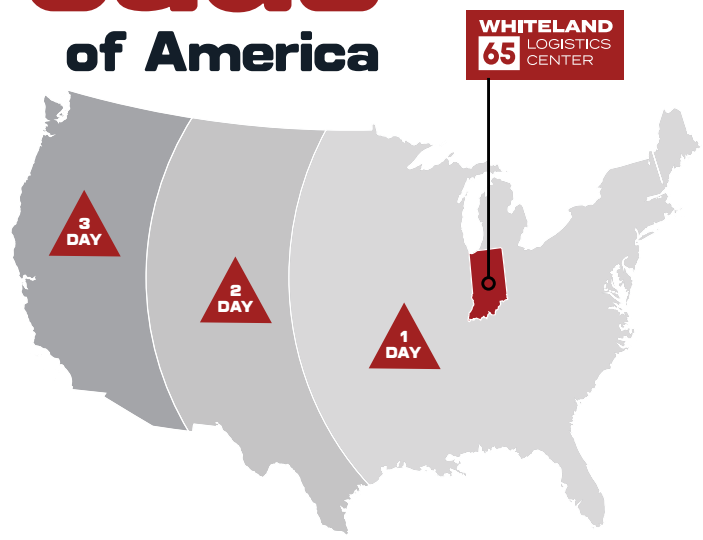
Demographics	15 min	30 min	45 min
2024 Total Population	111,828	756,215	1,753,424
Blue Collar	14,500	101,974	212,214
Population 16+ in labor force	62,298	398,880	955,362
High school diploma / GED	31%	31%	27%
Bachelor's degree	21.2%	20.4%	24.8%

Ideal location for industrial success

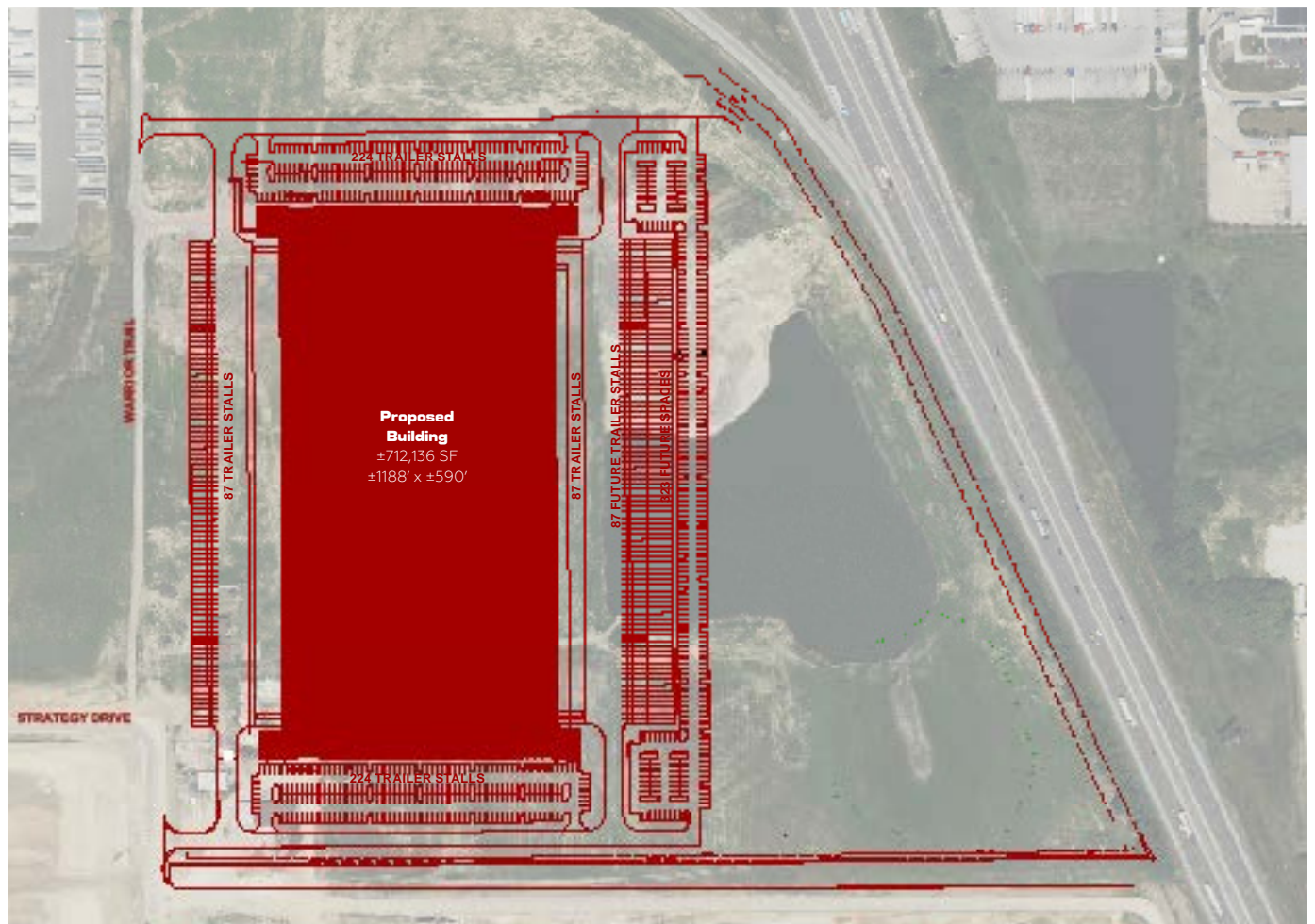
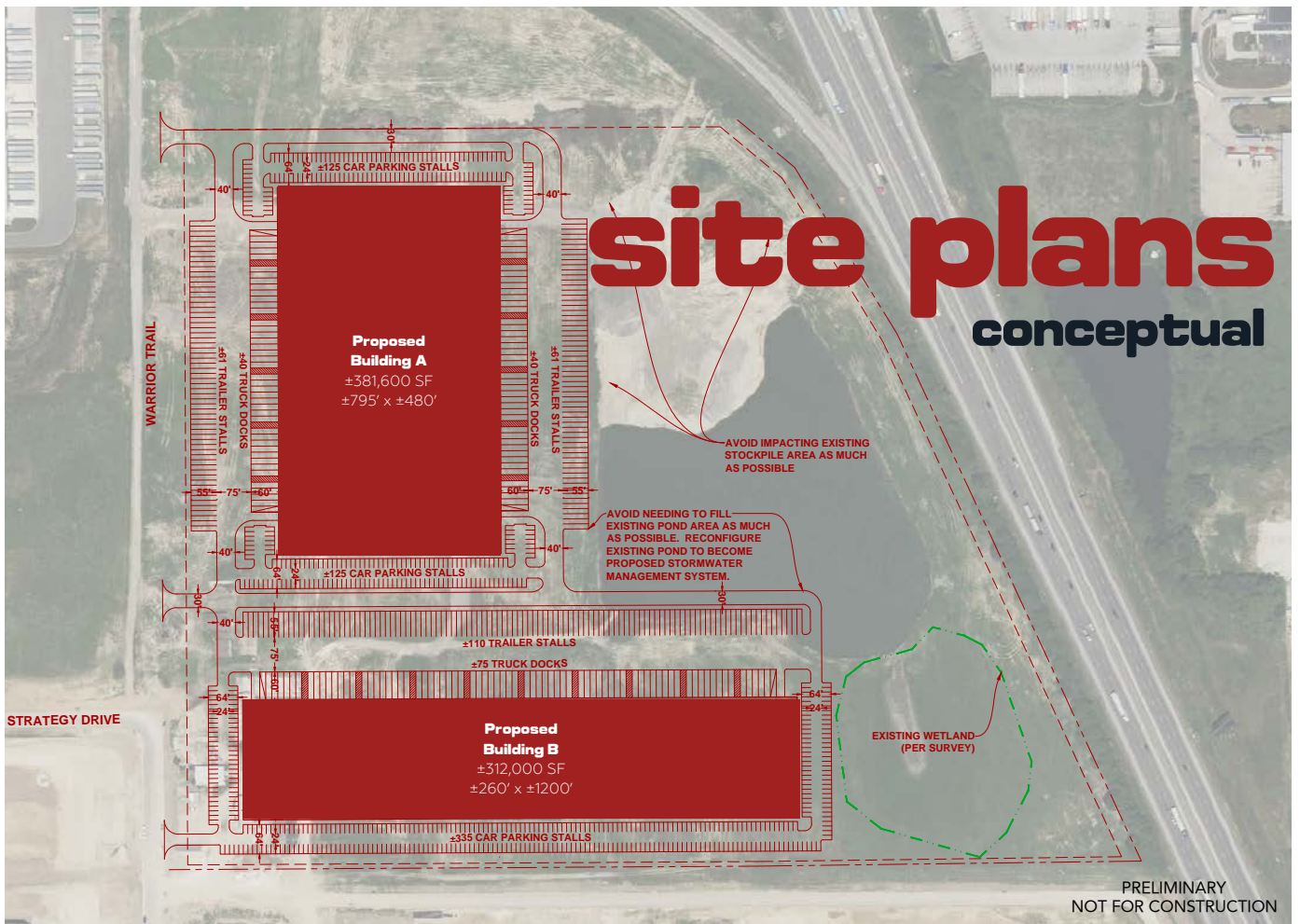


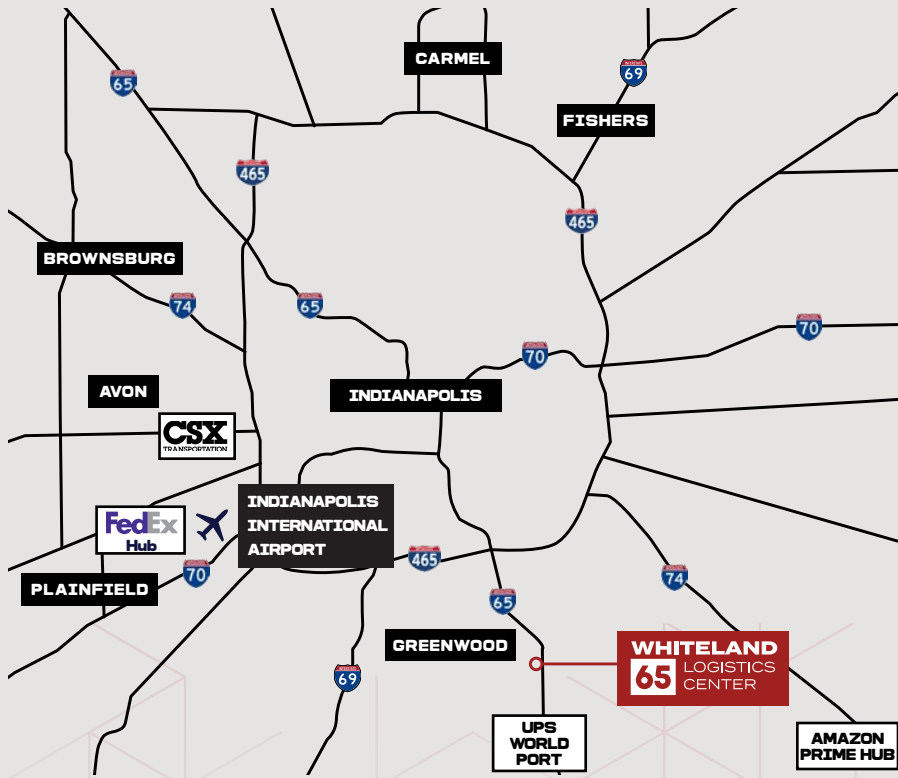
Indiana: the crossroads of America

- 
Indiana is ranked #1 in the U.S. for infrastructure (CNBC Top States for Business)
- 
1.5 billion tons of freight travel through Indiana yearly, making it the 5th busiest state for commercial freight traffic (INDOT)
- 
Strategic reach within one day's drive to more than 50% of the populations of U.S. and Canada
- 
Ranked fifth in the U.S. for cost of doing business (CNBC Top States for Business)
- 
More pass-through highways in Indiana than any other state



 **2nd largest FedEx hub** nationally is in Indianapolis





Drive times

Indianapolis International Airport/
FedEx Hub:
25 minutes

I-465:
12 minutes

Indianapolis CBD:
30 minutes

CSX Intermodal Terminal:
45 minutes

Cincinnati CVG Airport /Amazon
Prime Hub:
1 hour, 45 minutes

Louisville/UPS Worldport:
1 hour, 45 minutes

WHITELAND
65 LOGISTICS
CENTER

For more information, please contact:

Hines



Abigail Sievers
Executive Vice President
317.810.6410
abigail.sievers@jll.com

Brian Seitz, SIOR
Executive Managing Director
317.810.7184
brian.seitz@jll.com

Brian Buschuk
Executive Managing Director
317.810.7180
brian.buschuk@jll.com

JLL disclaimer (universal): Although information has been obtained from sources deemed reliable, neither Owner nor JLL makes any guarantees, warranties or representations, express or implied, as to the completeness or accuracy as to the information contained herein. Any projections, opinions, assumptions or estimates used are for example only. There may be differences between projected and actual results, and those differences may be material. The Property may be withdrawn without notice. Neither Owner nor JLL accepts any liability for any loss or damage suffered by any party resulting from reliance on this information. If the recipient of this information has signed a confidentiality agreement regarding this matter, this information is subject to the terms of that agreement. ©2025 Jones Lang LaSalle IP, Inc. All rights reserved.