

70  
DORSEY ROAD  
30

AVAILABLE NOW

FOR LEASE  
Class A Office Space

BUILD OUT SUITABLE FOR CYBER, TECH AND GOVERNMENT.  
ABILITY TO BUILD OUT SCIF SPACE



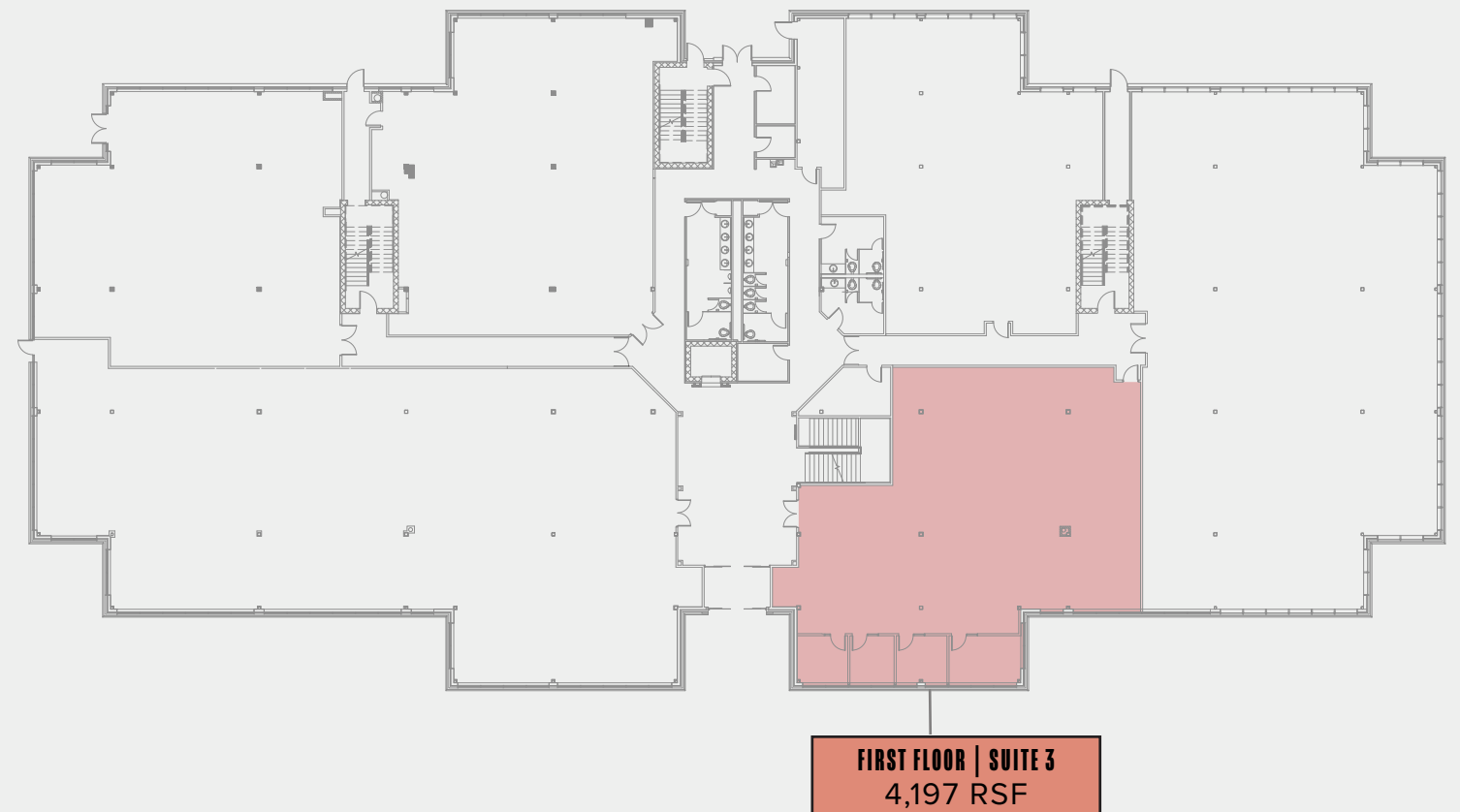
7030 DORSEY ROAD | HANOVER, MD

CBRE



# AVAILABILITY

**LAST SPACE REMAINING**  
**4,197 SF AVAILABLE**



## PROPERTY HIGHLIGHTS



**63,000 SF** Class A Office Building



**Excellent Building Signage** Visibility from Route 100 & MD-295



**4,197 SF** of contiguous space on the 1st floor



**Amenities Near By:** Arundel Mills Mall, Maryland Live Casino, Walmart, Costco, Over 15 Hotels and a Variety of Dine-In and Fast Food Restaurants



Rental Rate: **\$23.50 PSF/Full Service**



**Lobby Modernization** Renovations Complete



Parking: **4.00/1,000 SF**

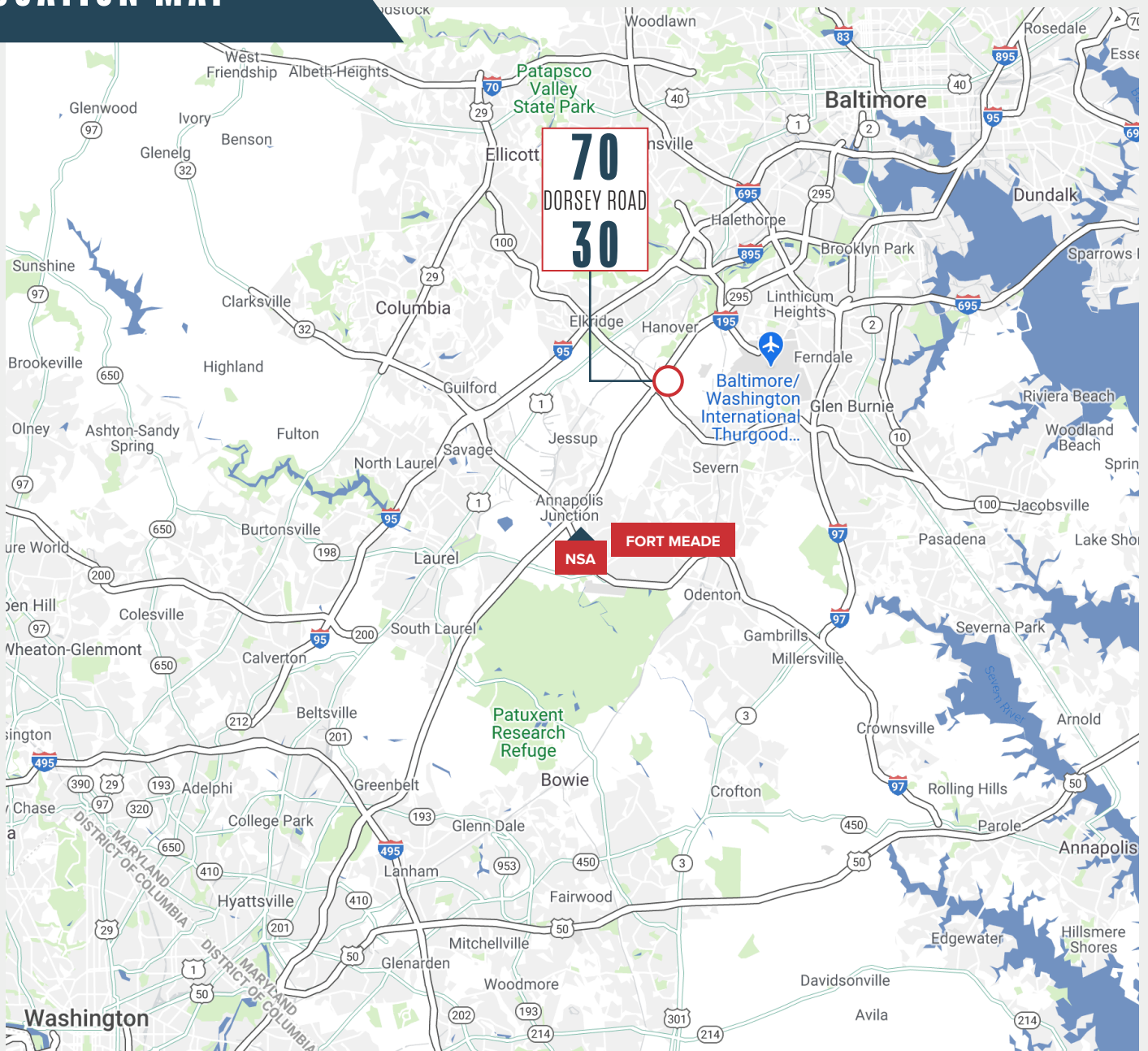


Located within **2 Miles of BWI Airport**



**7 mi** to NSA  
**7 mi** to Fort Meade  
**28 mi** to Washington DC

# LOCATION MAP



## CONTACT INFO

**DAVID FIELDS**

+1 410 244 3130

david.fields@cbre.com

**ADAM CERIBELLI**

+1 410 244 3175

adam.ceribelli@cbre.com

© 2025 CBRE, Inc. All rights reserved. This information has been obtained from sources believed reliable, but has not been verified for accuracy or completeness. You should conduct a careful, independent investigation of the property and verify all information. Any reliance on this information is solely at your own risk. CBRE and the CBRE logo are service marks of CBRE, Inc. All other marks displayed on this document are the property of their respective owners, and the use of such logos does not imply any affiliation with or endorsement of CBRE. Photos herein are the property of their respective owners. Use of these images without the express written consent of the owner is prohibited.

**CBRE**