



Office | For Sublease

The United Kingdom Building
Suite #801 - 409 Granville Street
Vancouver, BC

Perry Gorgounis

Personal Real Estate Corporation
CBRE Limited | Office Properties
Vice President
perry.gorgounis@cbre.com
604 662 5133

CBRE



Views

For Sublease
Suite #801 - 409 Granville Street
Vancouver, BC



Property Details

Available Area

Suite #801 - 2,368 SF

Net Rent

Contact Listing Agent

Additional Rent

\$21.62 per SF (2025 estimate)

Availability

Immediately

Expiry

May 31, 2029

Strategically located at the corner of Granville and West Hastings Street, the United Kingdom Building is a 17-storey office tower in the heart of Downtown Vancouver's financial district. This prime location offers unmatched transit connectivity, just steps from Waterfront Station, which serves the Canada Line, Expo Line, Millennium Line, SeaBus Terminal, and West Coast Express, as well as a major public bus hub.

Surrounding amenities include:

- + 5-minute walk to the Waterfront Station
- + 2-minute walk to CF Pacific Centre Mall
- + A wide selection of restaurants, cafés, and hotels including Fairmont Pacific Rim, Pan Pacific, and Steamworks

Building Highlights



Secure on-site parking



Secure bike storage



Fitness centre and showers



Concierge & building security

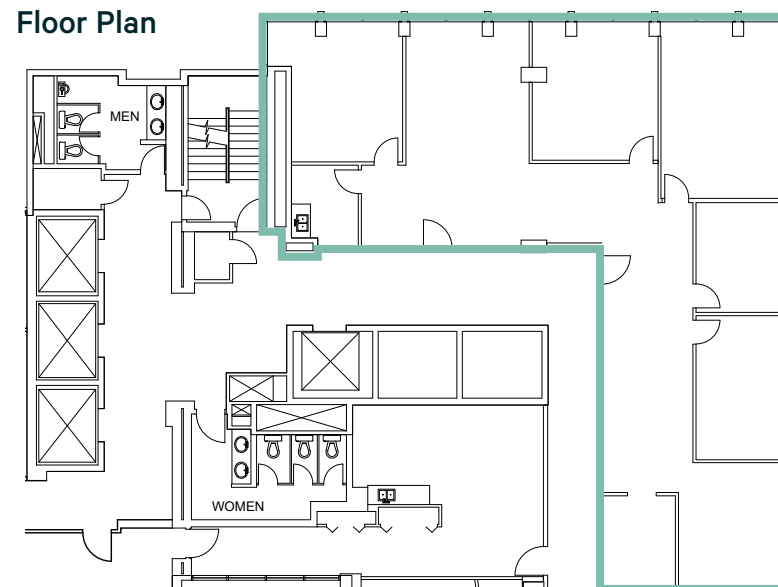


Shared boardroom



Renovated lobby with cafe

Floor Plan

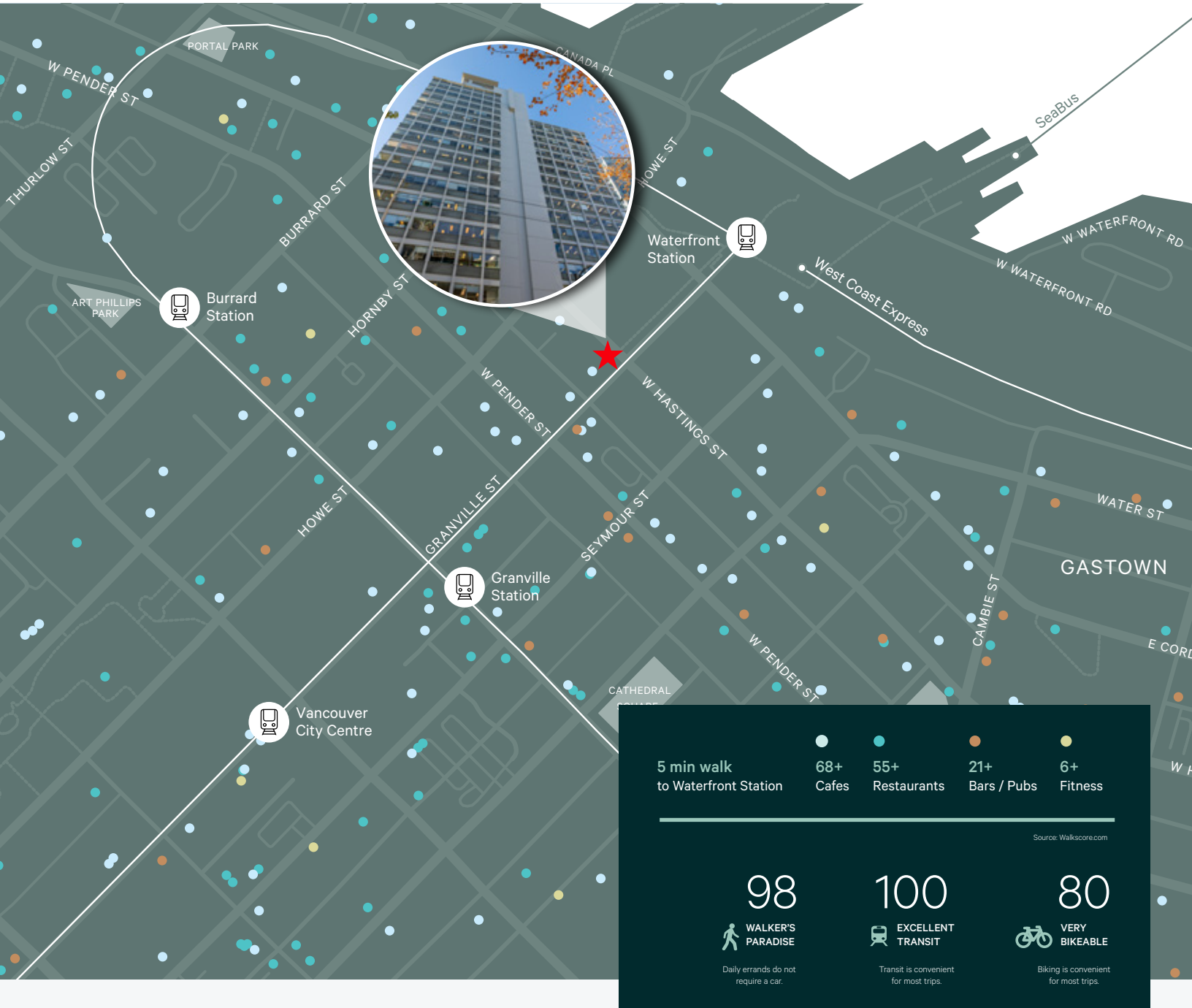


Not to scale



Office | For Sublease

Suite #801 - 409 Granville Street
Vancouver, BC



Contact

Perry Gorgounis

Personal Real Estate Corporation

CBRE Limited | Office Properties

Vice President

perry.gorgounis@cbre.com

604 662 5133

CBRE

www.cbre.ca/properties

This disclaimer shall apply to CBRE Limited, Real Estate Brokerage, and to all other divisions of the Corporation; to include all employees and independent contractors ("CBRE"). The information set out herein, including, without limitation, any projections, images, opinions, assumptions and estimates obtained from third parties (the "Information") has not been verified by CBRE, and CBRE does not represent, warrant or guarantee the accuracy, correctness and completeness of the Information. CBRE does not accept or assume any responsibility or liability, direct or consequential, for the Information or the recipient's reliance upon the Information. The recipient of the Information should take such steps as the recipient may deem necessary to verify the Information prior to placing any reliance upon the Information. The Information may change and any property described in the Information may be withdrawn from the market at any time without notice or obligation to the recipient from CBRE. CBRE and the CBRE logo are the service marks of CBRE Limited and/or its affiliated or related companies in other countries. All other marks displayed on this document are the property of their respective owners. All Rights Reserved.

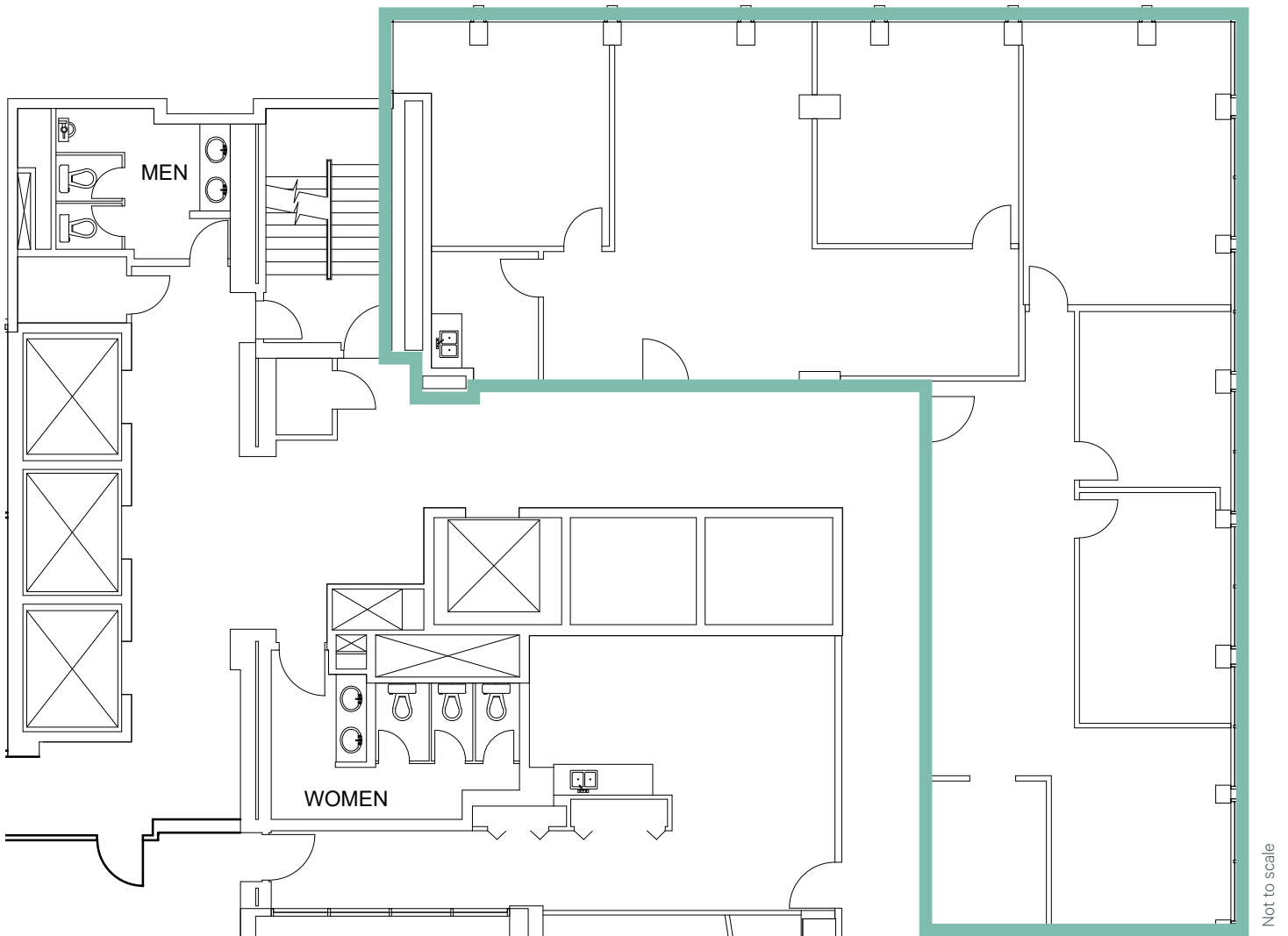
Mapping Sources: Canadian Mapping Services canadamapping@cbre.com; DMT1 Spatial, Environics Analytics, Microsoft Bing, Google Earth.

Office | For Sublease

409 Granville Street
Vancouver, BC

Floor Plan

Suite #801 - 2,368 SF



Contact

Perry Gorgounis

Personal Real Estate Corporation

CBRE Limited | Office Properties

Vice President

perry.gorgounis@cbre.com

604 662 5133

CBRE

www.cbre.ca/properties

This disclaimer shall apply to CBRE Limited, Real Estate Brokerage, and to all other divisions of the Corporation; to include all employees and independent contractors ("CBRE"). The information set out herein, including, without limitation, any projections, images, opinions, assumptions and estimates obtained from third parties (the "Information") has not been verified by CBRE, and CBRE does not represent, warrant or guarantee the accuracy, correctness and completeness of the Information. CBRE does not accept or assume any responsibility or liability, direct or consequential, for the Information or the recipient's reliance upon the Information. The recipient of the Information should take such steps as the recipient may deem necessary to verify the Information prior to placing any reliance upon the Information. The Information may change and any property described in the Information may be withdrawn from the market at any time without notice or obligation to the recipient from CBRE. CBRE and the CBRE logo are the service marks of CBRE Limited and/or its affiliated or related companies in other countries. All other marks displayed on this document are the property of their respective owners. All Rights Reserved.

Mapping Sources: Canadian Mapping Services canadamapping@cbre.com; DMTI Spatial, EnviroNics Analytics, Microsoft Bing, Google Earth.