

9050 W. Overland Road, Ste. 260, Boise, ID

Blackeagle Plaza Building, in Blackeagle Center



SPACE DETAILS

SPACE: 1,947 SF (2nd floor)
ACCESS: Access through the main lobby on south side. Vacant.
LAYOUT: Second floor with great views. All new finishes. Large open work area, four private offices and break counter.

PROPERTY FEATURES

BLDG TYPE: Office
BLDG SIZE: 32,308 Square Feet (condominium)
FLOORS: Two Story
PARKING: 5/1,000 SF Leased, included
LEASE TYPE: Full Service, Less Tenant Janitorial
ZONING: City of Boise, C-4D/DA
OWNER: Sundance Investments, L.L.L.P.

HIGHLIGHTS

- Office and Quasi Retail building
- Prime location on the NW corner of Overland and Maple Grove Roads
- Overland Road exposure and access
- Professional Blackeagle Center, 45 acres park provides abundant service and food amenities in close proximity
- Generous parking included
- Public bus stop adjacent to business park
- Close freeway access at both Overland (exit 50A/B) and Franklin Road (exit 49)

Call: 208-322-7300

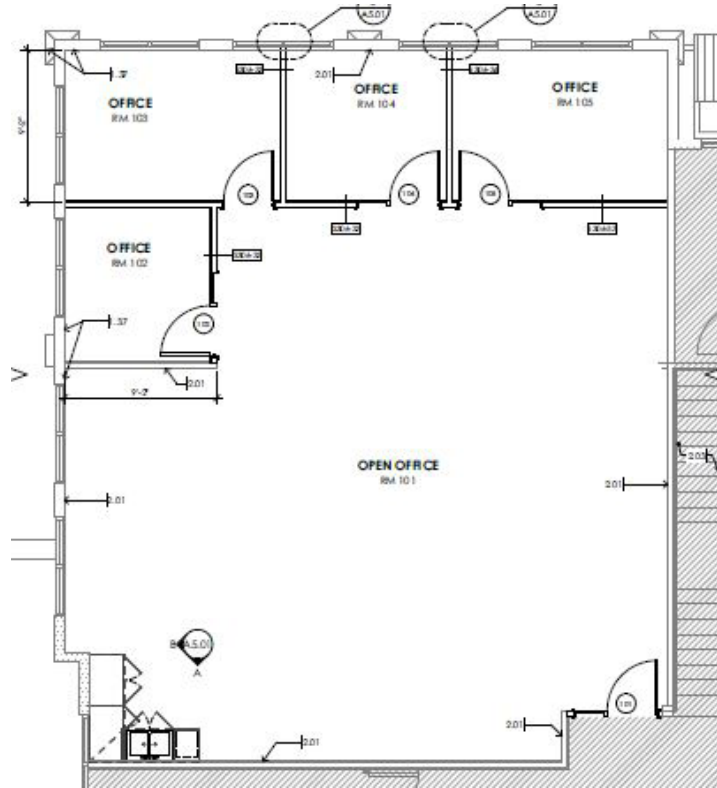
WWW.SUNDANCECO.COM



9050 W. Overland Road, Ste. 260, Boise, ID

Blackeagle Plaza Building, in Blackeagle Center

Floor Plan 1,947 SF (2nd floor)



Call: 208-322-7300

WWW.SUNDANCECO.COM



9050 W. Overland Road, Ste. 260, Boise, ID

Blackeagle Plaza Building, in Blackeagle Center



Call: 208-322-7300

WWW.SUNDANCECO.COM



9050 W. Overland Road, Ste. 260, Boise, ID

Blackeagle Plaza Building, in Blackeagle Center



Call: 208-322-7300

WWW.SUNDANCECO.COM

