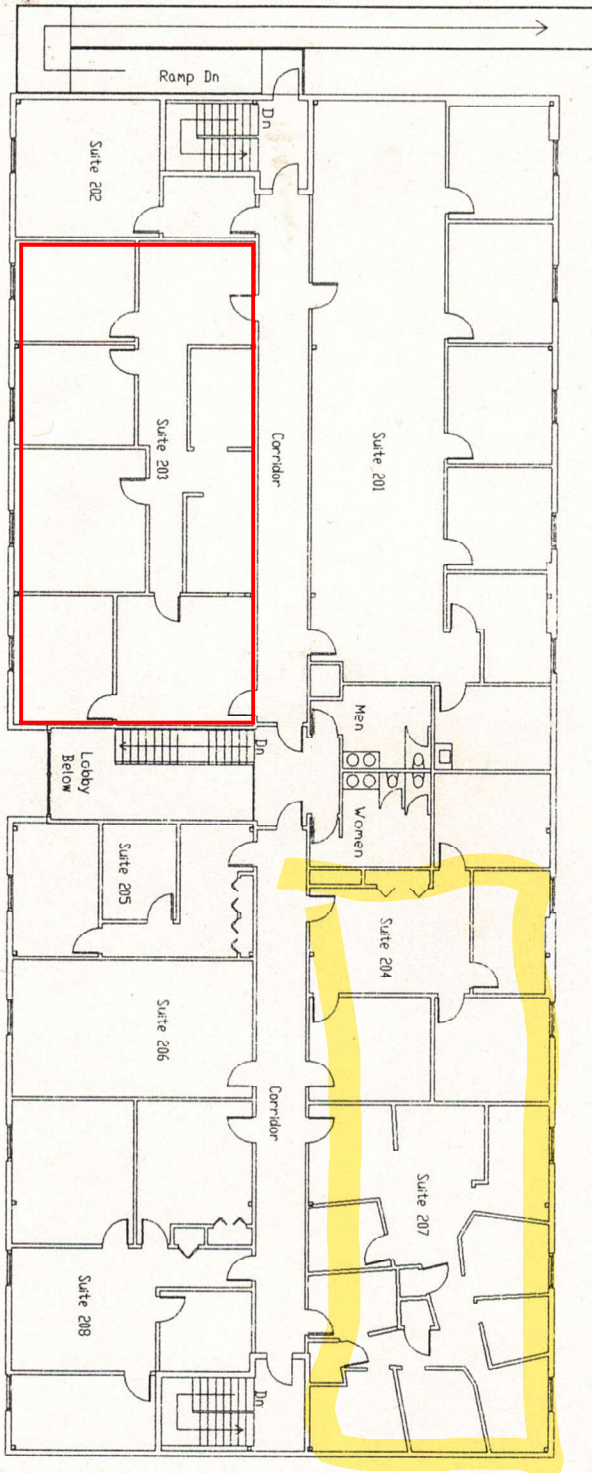


SECOND FLOOR PLAN



A2

EXISTING BUILDING AT:
 792 SOUTH MAIN STREET
 GREAT WOODS OFFICE PARK
 MANSFIELD, MASSACHUSETTS

SECOND FLOOR PLAN

REVISIONS			
DATE	COMMENT	DATE	COMMENT



Walsh/Cochis Associates Inc.
 Architects & Consultants
 1100 Randolph Street
 Canton, MA 01921
 617/898-8700