

For Lease

University Crossing



LOGIC



705 N. Virginia St.
Reno, NV 89501

Paul Evans

Senior Vice President
775.745.8100
pevans@logicCRE.com
S.0193234

Rylee Buckmaster

Associate
775.217.0297
rbuckmaster@logicCRE.com
S.0200156

Listing Snapshot



Negotiable
Lease Rate



± 1,447 SF
Available Square Footage



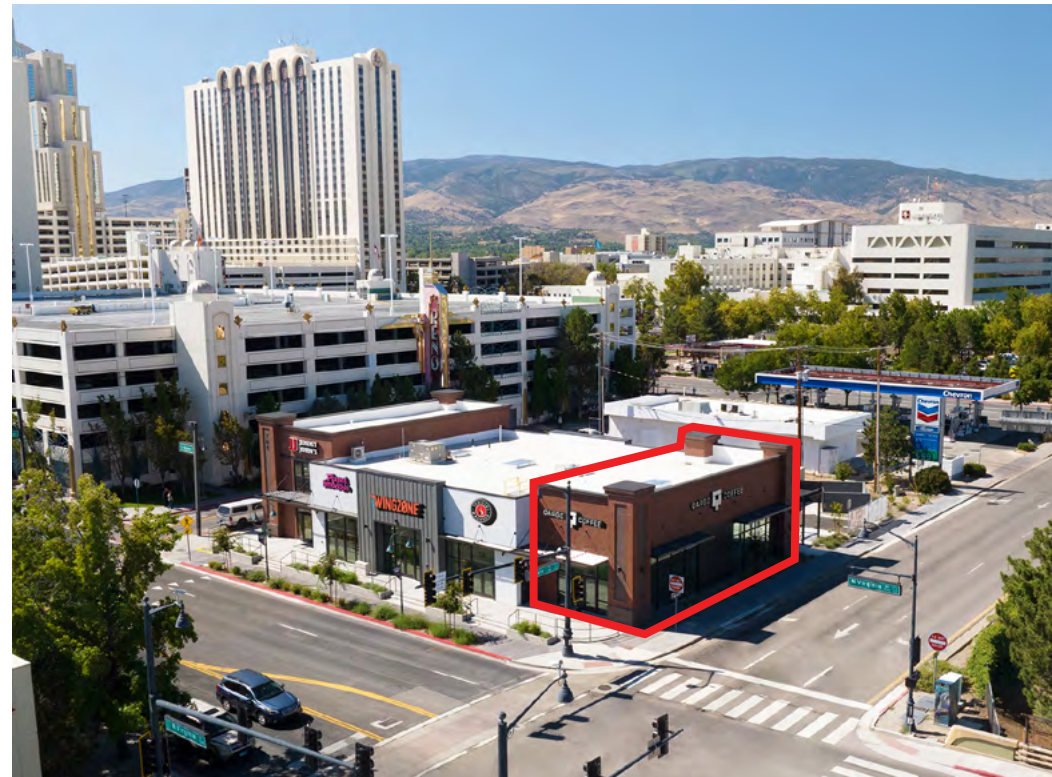
\$0.87
Estimated OPEX

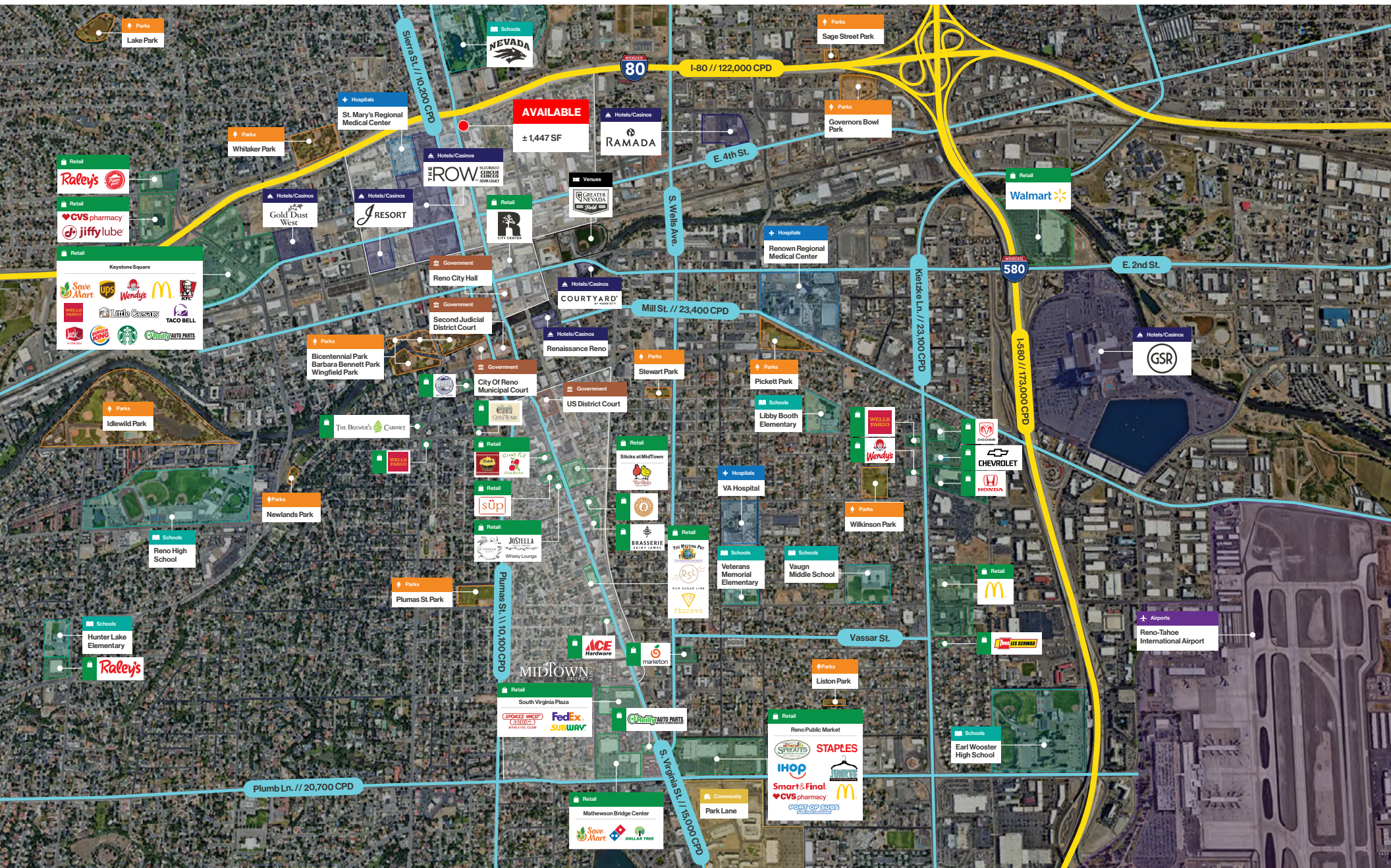
Property Highlights

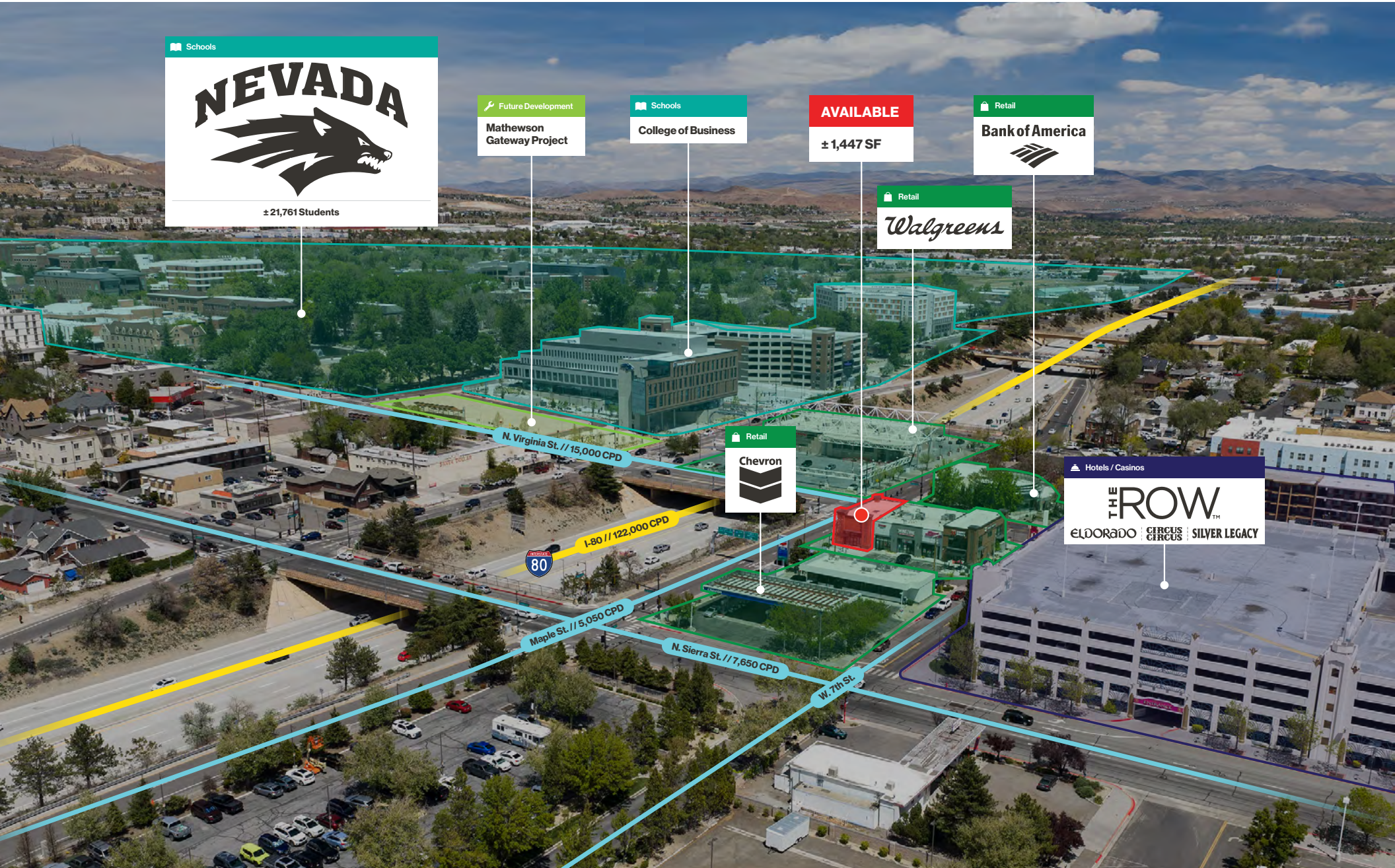
- Grey shell space equipped with a grease interceptor
- Class A finishes
- Property is located along I-80 with frontage along N. Virginia St., two blocks from the University of Nevada, Reno
- Sixteen (16) on site parking spaces available
- High population area with over 21,828 residents within a 1-mile radius and a daytime populations over 46,700.

Demographics

	1-mile	3-mile	5-mile
2025 Population	21,325	141,643	249,295
2025 Average Household Income	\$74,234	\$86,521	\$101,092
2025 Total Households	9,913	60,964	103,488







Schools

± 21,761 Students

Future Development

Mathewson Gateway Project

Schools

College of Business

AVAILABLE

± 1,447 SF

Retail

Bank of America

Retail

Walgreens

Retail

Chevron

Hotels / Casinos

THE ROW

EL DORADO CIRCUS CIRCUS SILVER LEGACY

N. Virginia St. // 15,000 CPD

I-80 // 122,000 CPD

Maple St. // 5,050 CPD

N. Sierra St. // 7,650 CPD

W. 7th St.



↔ Mixed-Use

R CITY CENTER

± 150,000 SF Office Space
± 78,500 SF Retail
530 Apartment Units

🏨 Hotels / Casinos

THE ROW

ELDORADO CIRCUS CIRCUS SILVER LEGACY

+ Hospitals

St. Mary's Regional Medical Center
± 380 Beds

🏠 Student Housing

Canyon Flats
± 508 Units

🏠 Retail

Bank of America

AVAILABLE
± 1,447 SF

🏠 Retail

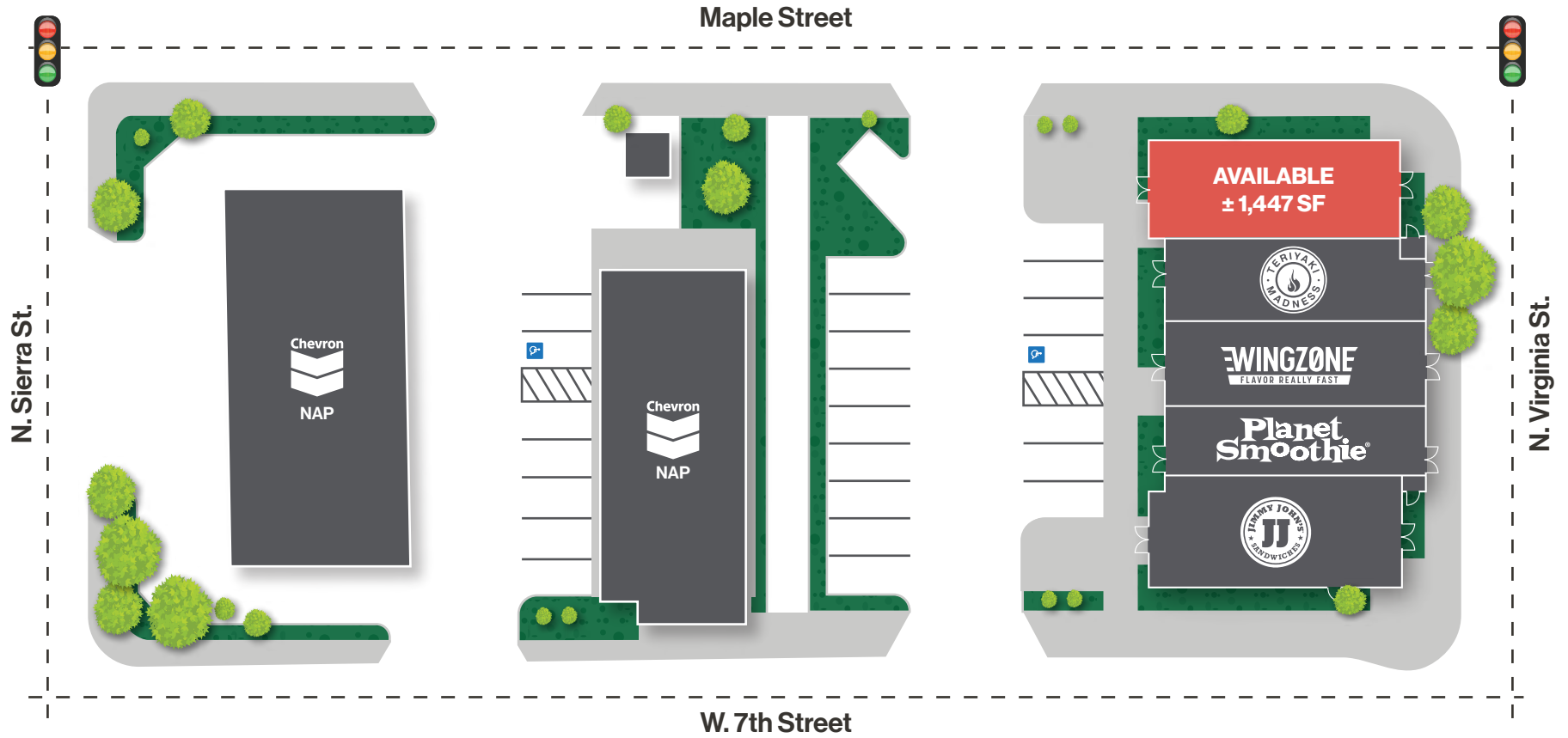
Chevron

🏠 Retail

Walgreens

🏠 Retail

Roberto's TACO SHOP



LOGIC Commercial Real Estate

Specializing in Brokerage and Receivership Services



Join our email list and
connect with us on LinkedIn

The information herein was obtained from sources deemed reliable; however LOGIC Commercial Real Estate makes no guarantees, warranties or representation as to the completeness or accuracy thereof.

For inquiries please reach out to our team.

Paul Evans

Senior Vice President
775.745.8100
pevans@logicCRE.com
S.0193234

Rylee Buckmaster

Associate
775.217.0297
rbuckmaster@logicCRE.com
S.0200156