

Corporate Woods III

72,000± RSF Available

Corporate Woods III
125 Corporate Office Drive
Earth City, MO 63045

Lease Rate: \$19.00/SF, Full Service



Office Space Available

125 Corporate Office Drive | Earth City, MO 63045

For Lease

Property Information

- + Floors 1 & 4 available immediately
- + 7/1,000 RSF parking ratio (including free structured parking)
- + Potential building and monument signage opportunities
- + Vertical campus
- + 3 Training Rooms
- + Common area Micro Mart
- + Exterior patio
- + Large open floor plan
- + Excellent glass line & natural light
- + Lease Rate:

\$19.00/SF,

FULL SERVICE



Office Space Available

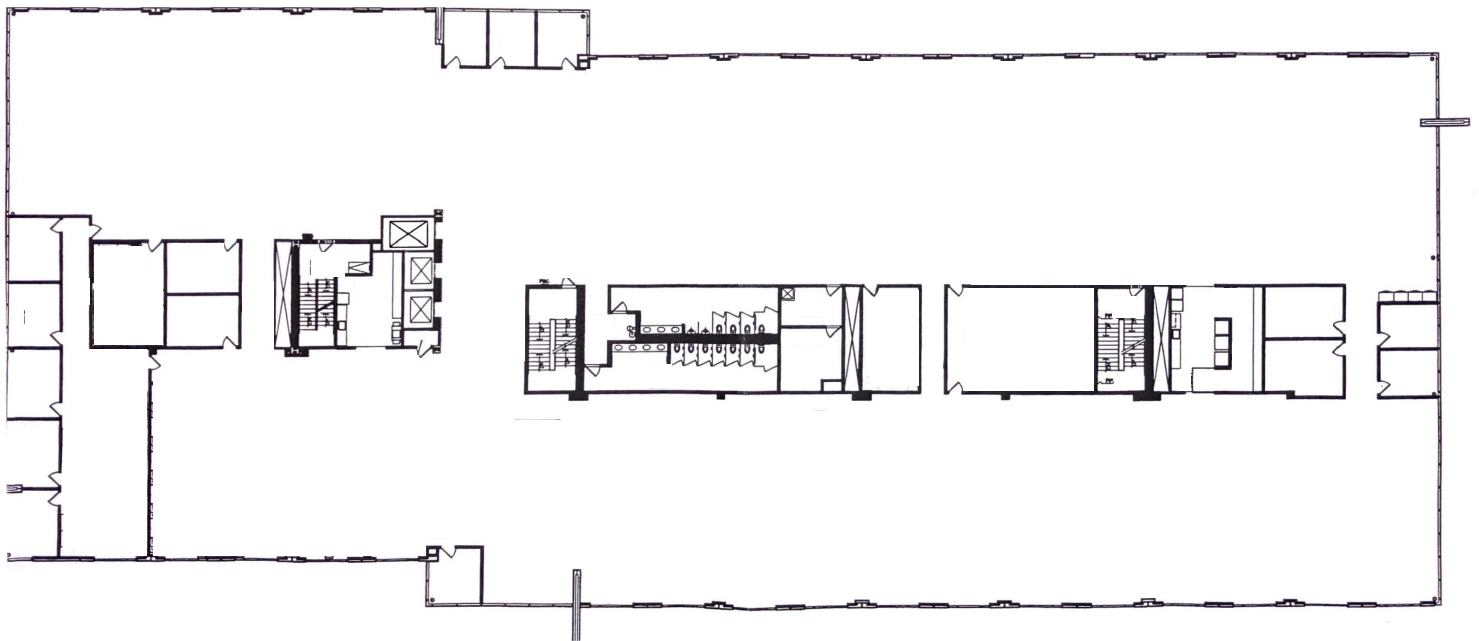
125 Corporate Office Drive | Earth City, MO 63045

For Lease

FIRST FLOOR



FOURTH FLOOR



Contact Us

Tom Ray

First Vice President
+1 314 655 6012
tom.ray@cbre.com

Brian Lyss

Vice President
+1 314 655 5805
brian.lyss@cbre.com

© 2022 CBRE, Inc. All rights reserved. This information has been obtained from sources believed reliable, but has not been verified for accuracy or completeness. You should conduct a careful, independent investigation of the property and verify all information. Any reliance on this information is solely at your own risk. CBRE and the CBRE logo are service marks of CBRE, Inc. All other marks displayed on this document are the property of their respective owners, and the use of such logos does not imply any affiliation with or endorsement of CBRE. Photos herein are the property of their respective owners. Use of these images without the express written consent of the owner is prohibited.

www.cbre.com/stlouis

