

**UNDER CONSTRUCTION**

**CBRE**

# INDUSTRIAL

747,824 TOTAL SF | 59.9 AC

## FOR SALE OR LEASE

6942 INNOVATION WAY, ORLANDO, FL 32831



### PROJECT DATA

#### Site Area

Lot Size ..... 59.9 AC  
2,610,943 SF

#### Building Area

Building 100 .....339,691 SF  
Building 200.....408,133 SF  
Combined Area.....747,824 SF

#### Power

Site Capacity.....16+ mW

#### Parking

Building 100  
Auto .....282 Spaces  
Trailer.....75 Spaces

Building 200  
Auto .....337 Spaces  
Trailer.....87 Spaces

Combined  
Auto .....619 Spaces  
Trailer.....162 Spaces

CONSTRUCTION PROGRESS - PREPPING PADS



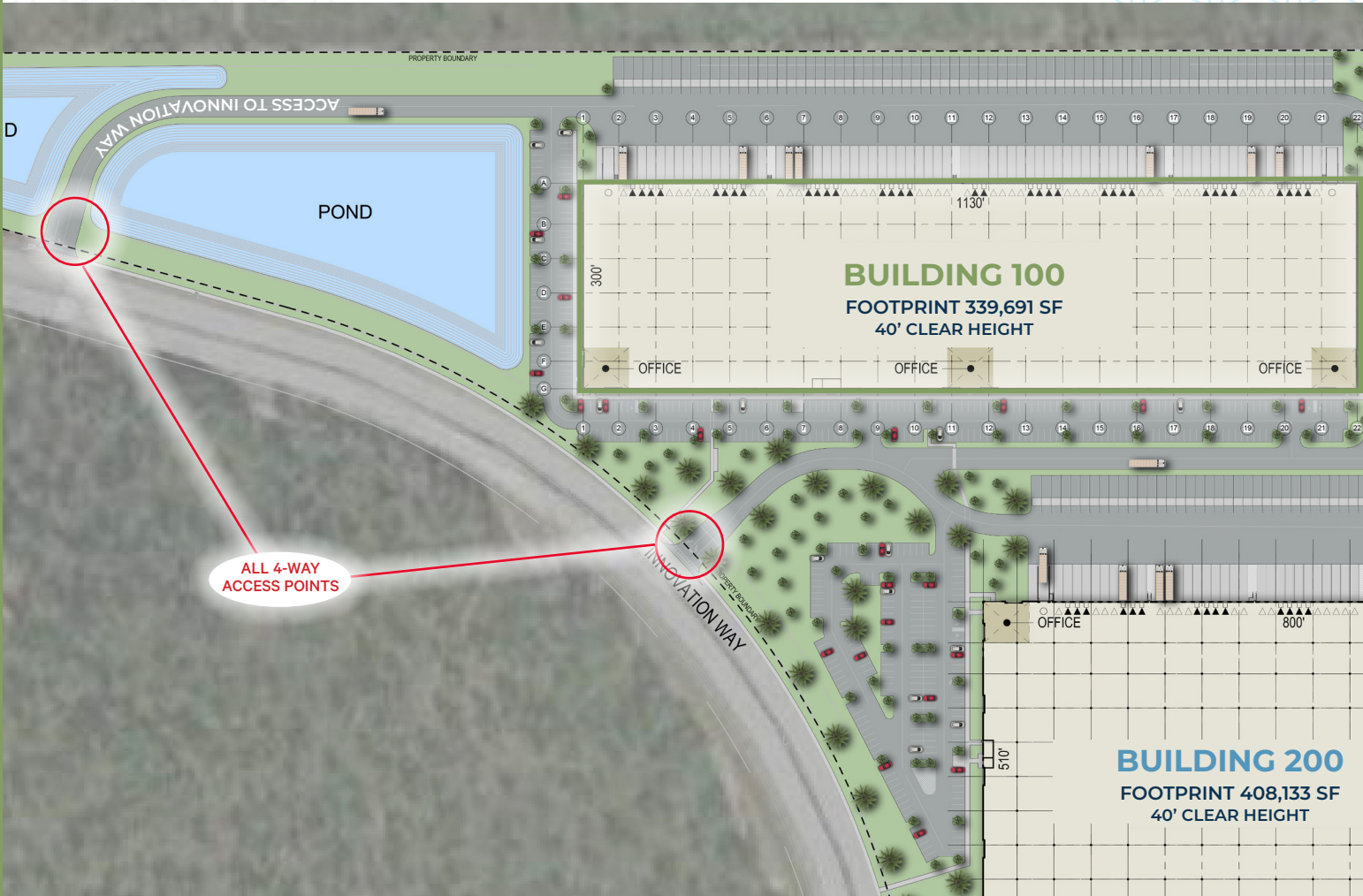

**Venture Park**  
**Beachline II & III**



## BUILDING DATA

Building Footprint.....339,691 SF  
 Clear Height.....40'  
 Building Dimensions.....1,130' X 300'  
 Column Spacing.....54'x50' (60' Speed Bay)  
 Dock-High Doors.....73  
 Postions with Pit Levelers.....34 (40k lb Capacity)

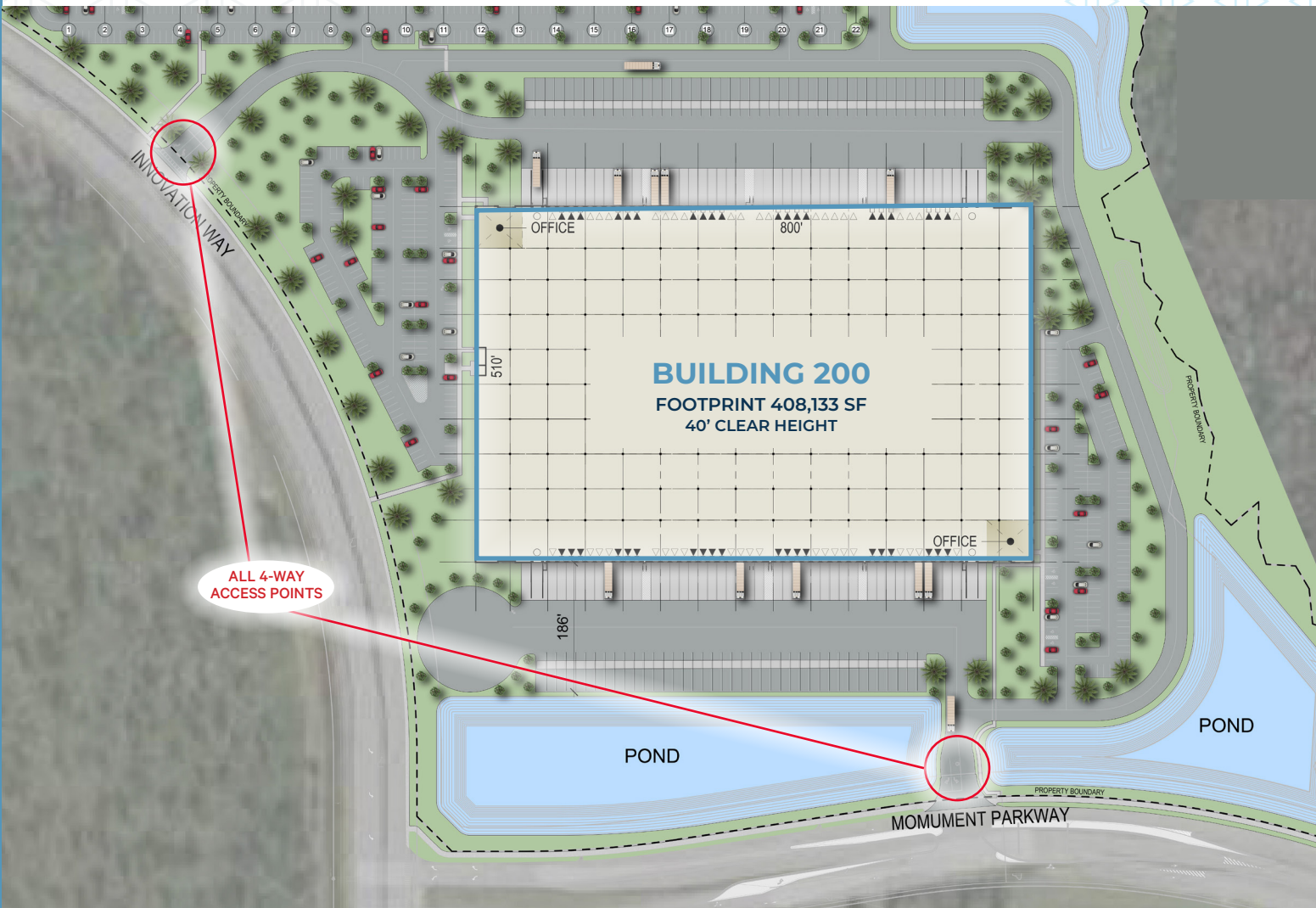
Drive-In Doors.....2  
 Power.....4,000 A (Expandable)  
 Sprinkler.....ESFR  
 Auto Parking.....282 Stalls (0.83 per 1,000 SF)  
 Trailer Parking.....75 Stalls  
 Truck Court.....185' (Private)

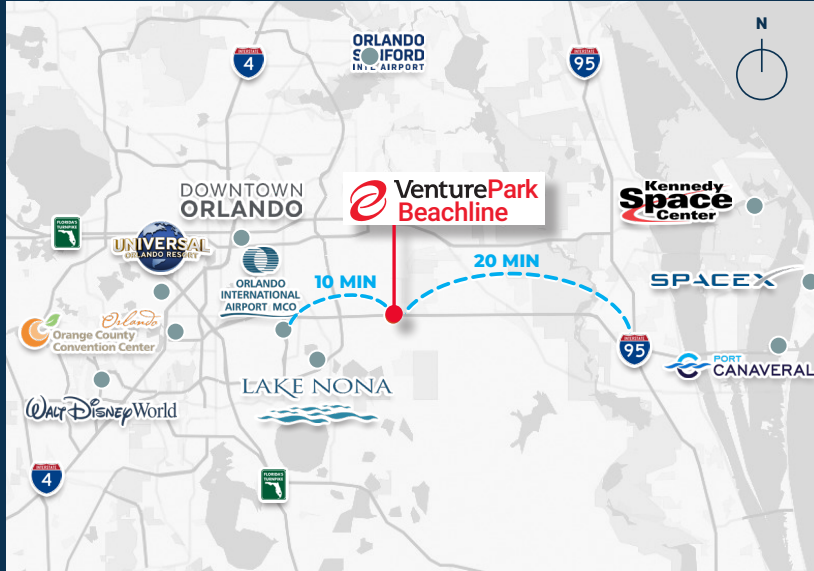




## BUILDING DATA

Building Footprint.....	408,133 SF	Drive-In Doors.....	4
Clear Height.....	40'	Power.....	4,000 A (Expandable)
Building Dimensions.....	800' X 510'	Sprinkler.....	ESFR
Column Spacing.....	54'x50' (60' Speed Bay)	Auto Parking.....	337 Stalls (0.83 per 1,000 SF)
Dock-High Doors.....	82	Trailer Parking.....	87 Stalls
Postions with Pit Levelers.....	40 (40k lb Capacity)	Truck Court.....	185' (Private)

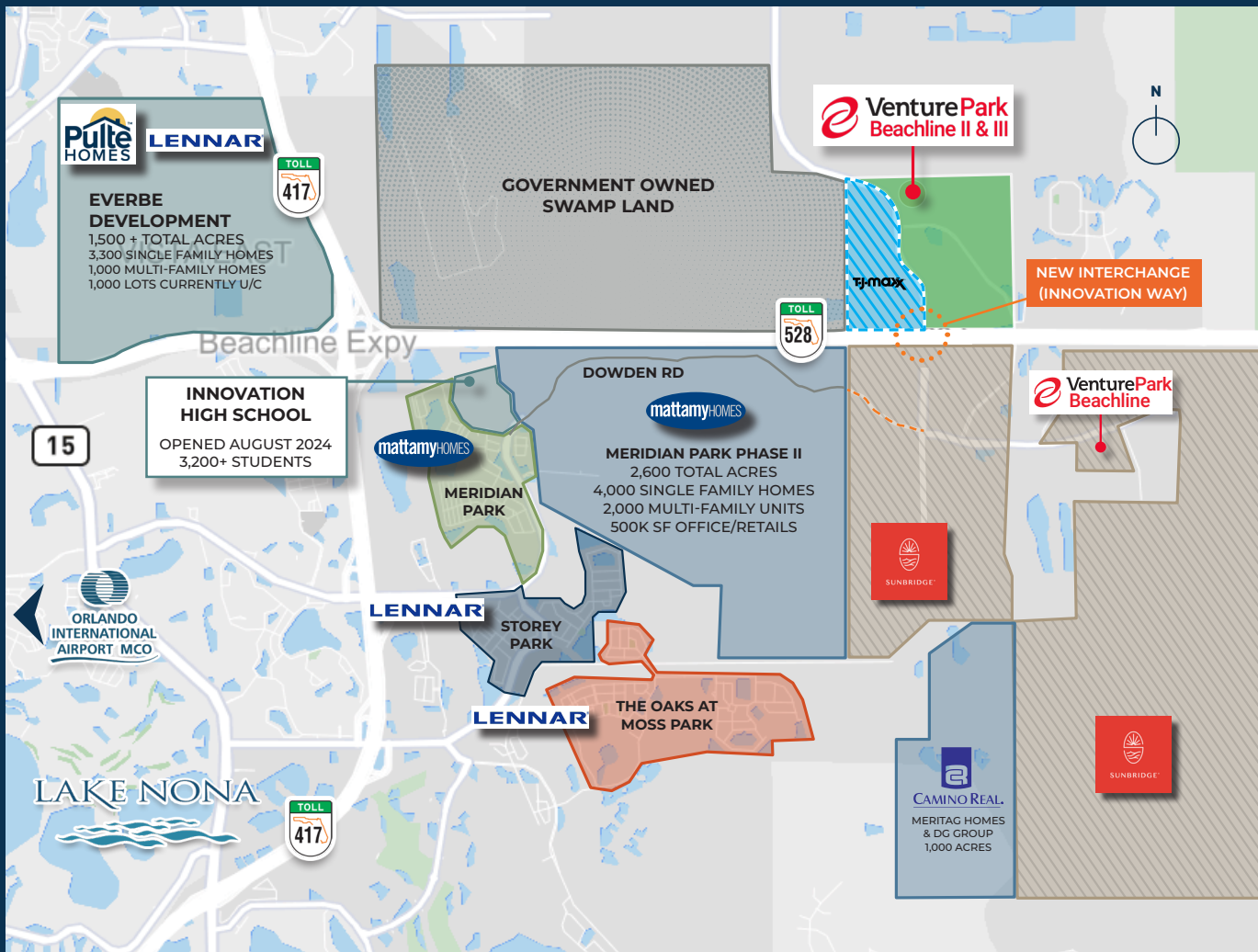




## KEY HIGHLIGHTS



- + Site has potential for 16+ mW of power, accompanied with dual feeds and redundant circuits
- + Available For Lease or User-Owner Sale
- + Less than 1 Mile to SR-528/Beachline Highway, providing immediate access to Orlando International, SR-417, I-95, and the Space Coast
- + Within a one-day turn-around of **22 million** customers, and eight hours of **45 million**



## FLORIDA INDUSTRIAL & LOGISTICS CONTACTS

### David Murphy

Vice Chairman  
407 404 5020  
david.murphy@cbre.com

### Monica Wonus

Executive Vice President  
+1 407 404 5042  
monica.wonus@cbre.com

### Gaby Gissy

Associate  
+1 407 404 5012  
gaby.gissy@cbre.com

### Sharif Baker

Associate  
+1 407 404 5018  
sharif.baker@cbre.com

© 2026 CBRE, Inc. All rights reserved. This information has been obtained from sources believed reliable but has not been verified for accuracy or completeness. CBRE, Inc. makes no guarantee, representation or warranty and accepts no responsibility or liability as to the accuracy, completeness, or reliability of the information contained herein. You should conduct a careful, independent investigation of the property and verify all information. Any reliance on this information is solely at your own risk. CBRE and the CBRE logo are service marks of CBRE, Inc. All other marks displayed on this document are the property of their respective owners, and the use of such marks does not imply any affiliation with or endorsement of CBRE. Photos herein are the property of their respective owners. Use of these images without the express written consent of the owner is prohibited.

# CBRE