



HAMILTON BLOCK



FOR LEASE

Marine Drive Retail Opportunities

880 WEST 15TH STREET | NORTH VANCOUVER, BC

CBRE



OPPORTUNITY

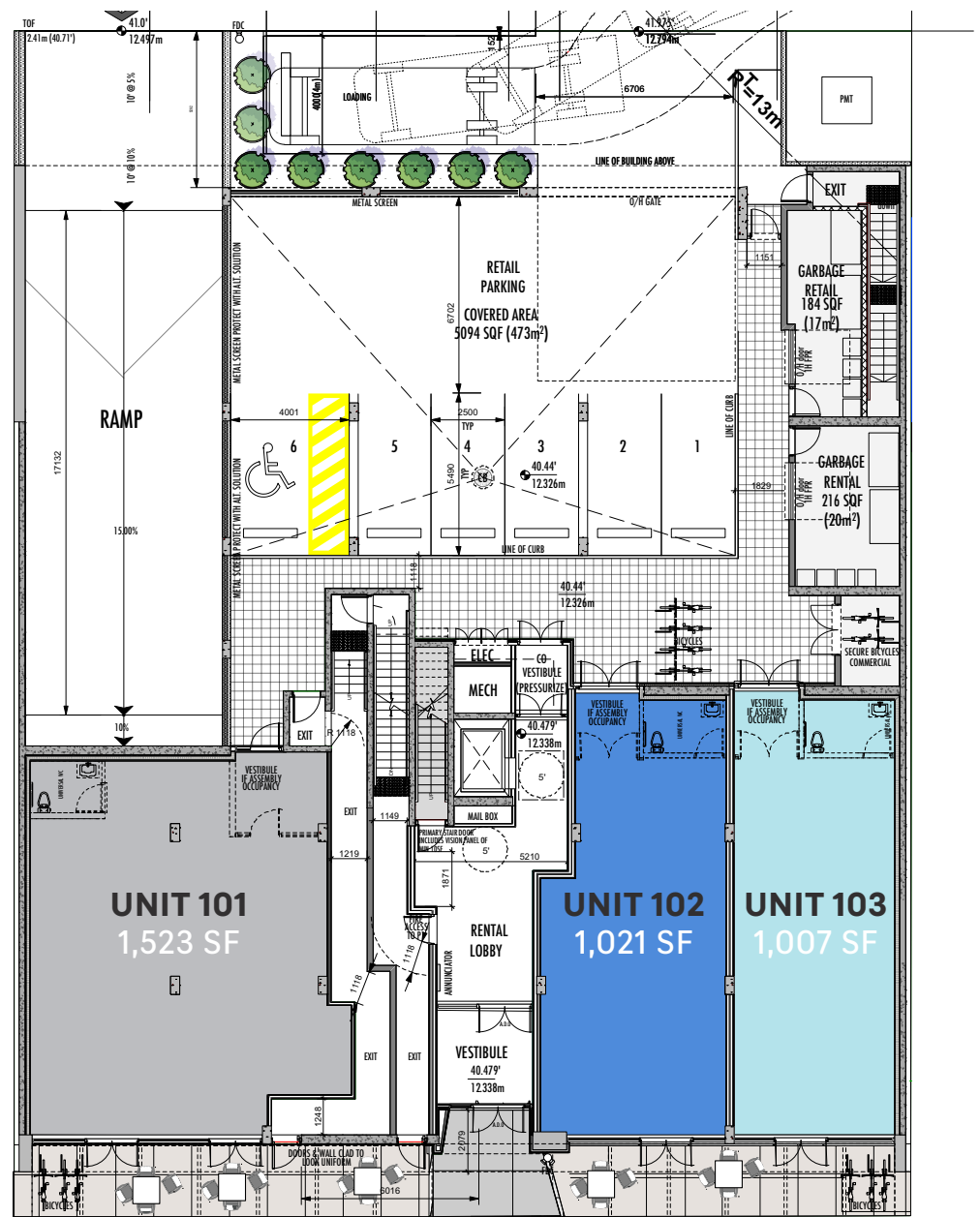
HAMILTON BLOCK

Situated at Marine Drive and West 15th Street along the bustling Marine Drive corridor, 880 Hamilton Block is a brand new mixed-use development featuring a 5-storey residential rental building with 3,551 square feet of retail space at grade. The retail will extend onto a serene treelined plaza, offering retailers patio opportunities which will further animate the Marine-Hamilton neighbourhood of North Vancouver.

OPPORTUNITY OVERVIEW

	Unit 101	Unit 102	Unit 103
Unit Size	1,523 SF	1,021 SF	1,007 SF
Net Rent	\$55 PSF	\$60 PSF	\$60 PSF
Venting Capability	Yes	Yes	Yes

Zoning	CD-759
Est. Additional Rent	TBD (currently under construction)
Delivery	Q4 2026



* Floor plan not to scale.

LOCATION



The Marine-Hamilton neighbourhood surrounding 880 West 15th Street is a vibrant and dynamic area that has quickly become a sought-after destination. Known for its blend of residential charm and unique mix of modern amenities, the neighbourhood is home to a variety of independent businesses, cozy coffee shops, trendy boutiques, and essential services.

880 Hamilton's prime location along Marine Drive ensures high visibility and easy access to major transit routes, making it a convenient hub for residents and visitors.

With its close-knit community feel, scenic surroundings, and ongoing growth, the area offers exciting opportunities for tenants to establish and grow their presence in one of North Vancouver's most promising neighbourhoods.



LOCATION

880 Hamilton Block is ideally positioned in one of North Vancouver's most dynamic and rapidly evolving neighbourhoods. Located directly across from the proposed Capilano Mall redevelopment and just north of the multi-phase North Harbour community, 880 Hamilton Block is surrounded by transformative projects that are reshaping the area into a vibrant, mixed-use hub. These developments are expected to bring thousands of new homes, expanded retail offerings, and enhanced public amenities—creating a surge in foot traffic and demand. With its prominent location along Marine Drive and proximity to these major growth nodes, 880 Hamilton offers a compelling opportunity for retailers looking to establish a presence in a vibrant and evolving community.



DEMOGRAPHICS (2KM)

		
Population (2024) 57,356	Household Income (2024) \$126,599	Median Age (2024) 41.1
		
Population (2029) 66,128	Household Income (2029) \$148,388	Median Age (2029) 41.9



880 WEST 15TH ST

 HAMILTON
BLOCK

MARINE DRIVE

CONTACT AGENTS

ADRIAN BERUSCHI
Personal Real Estate Corporation

Senior Vice President - Retail Properties
604 662 5138
adrian.beruschi@cbre.com

CHLOE HAMELIN

Associate - Retail Properties
604 662 5166
chloe.hamelin@cbre.com

CBRE

This disclaimer shall apply to CBRE Limited, Real Estate Brokerage, and to all other divisions of the Corporation; to include all employees and independent contractors ("CBRE"). All references to CBRE Limited herein shall be deemed to include CBRE, Inc. The information set out herein, including, without limitation, any projections, images, opinions, assumptions and estimates obtained from third parties (the "Information") has not been verified by CBRE, and CBRE does not represent, warrant or guarantee the accuracy, correctness and completeness of the Information. CBRE does not accept or assume any responsibility or liability, direct or consequential, for the Information or the recipient's reliance upon the Information. The recipient of the Information should take such steps as the recipient may deem necessary to verify the Information prior to placing any reliance upon the Information. The Information may change and any property described in the Information may be withdrawn from the market at any time without notice or obligation to the recipient from CBRE. CBRE and the CBRE logo are the service marks of CBRE Limited and/or its affiliated or related companies in other countries. All other marks displayed on this document are the property of their respective owners. All Rights Reserved.

Mapping Sources: Canadian Mapping Services canadamapping@cbre.com; DMTI Spatial, Enviroics Analytics, Microsoft Bing, Google Earth.

www.cbre.ca/vancouver

CBRE Limited
1021 West Hastings Street #2500, Vancouver, BC www.cbre.ca