

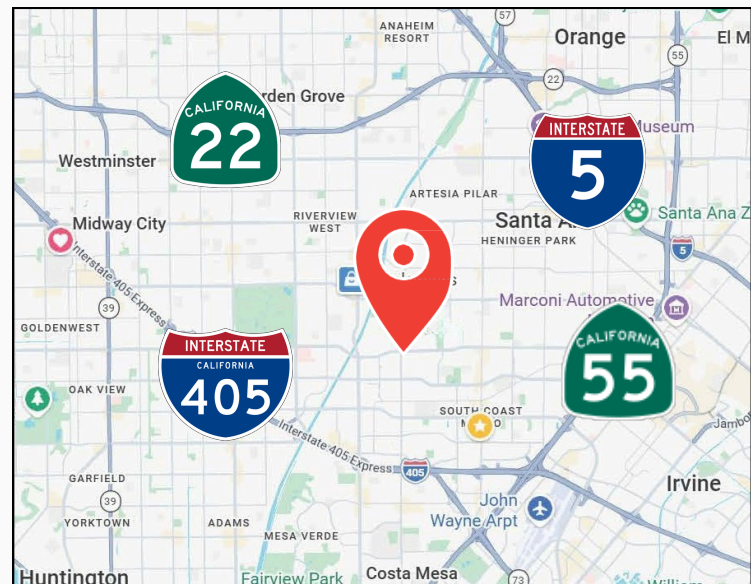
FOR SUBLEASE ± 2,400 SQUARE FEET INDUSTRIAL CONDO WITH WAREHOUSE



**WARNER/FAIRVIEW BUSINESS PARK
2900 W. PENDLETON AVE., SANTA ANA, CA 92704**

PROPERTY HIGHLIGHTS

- ± 2,400 Sq. Ft. Corner Unit
- One (1) 10'x12' Ground Level Loading Door
- 14' Clearance
- Power: 100 amps (verify)
- One (1) Private Office
- One (1) Reception Area
- One (1) Restroom
- Close Proximity to 405 and 55 Freeways
- **Sublease through November 30, 2027**



RYAN MULROONEY

SENIOR ASSOCIATE

(714) 341-1188

RYAN@ASHWILLASSOCIATES.COM

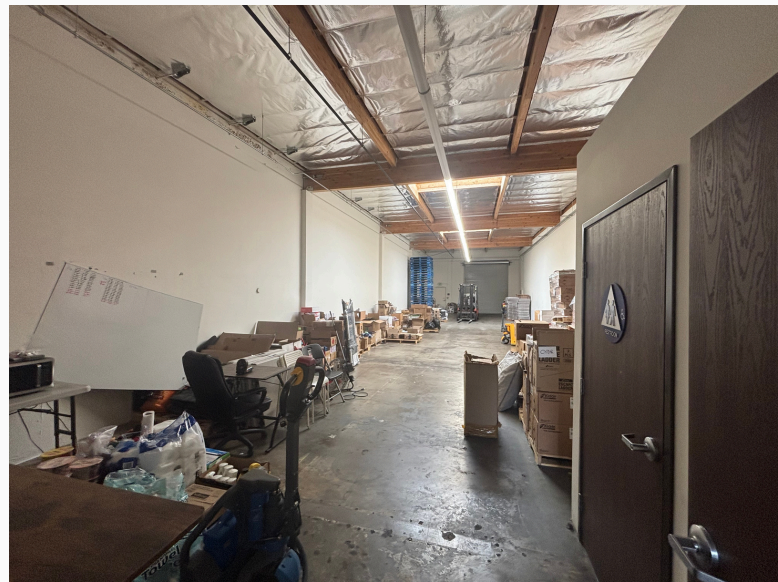
CADRE LIC.02158179

Disclaimer: This Information contained herein is believed reliable but not guaranteed. Photos may be digitally altered or artistic renderings. All trademarks and images are the property of their respective owners. Buyers and Tenants should verify information independently.



CORP. DRE LIC.01291393

FOR SUBLEASE ± 2,400 SQUARE FEET INDUSTRIAL CONDO WITH WAREHOUSE



RYAN MULROONEY
SENIOR ASSOCIATE
(714) 341-1188
RYAN@ASHWILLASSOCIATES.COM
CADRE LIC.02158179

Disclaimer: This Information contained herein is believed reliable but not guaranteed. Photos may be digitally altered or artistic renderings. All trademarks and images are the property of their respective owners. Buyers and Tenants should verify information independently.



CORP. DRE LIC.01291393