



WILD BASIN II

108 WILD BASIN ROAD - 78746



AVAILABLE SUITES

SUITE	SQ. FT.
160	1,180
215	1,614
370	10,483

BUILDING FEATURES

- 3.5:1000 Parking
- Covered Parking Available
- Balcony Views of Downtown & Greenbelt
- Available Showers and Lockers
- Building Conference Room
- Upgraded Common Areas



J.D. LEWIS
(512) 538-0064
jdlewis@hpitx.com

CHRIS PRICE
(512) 538-1029
price@hpitx.com

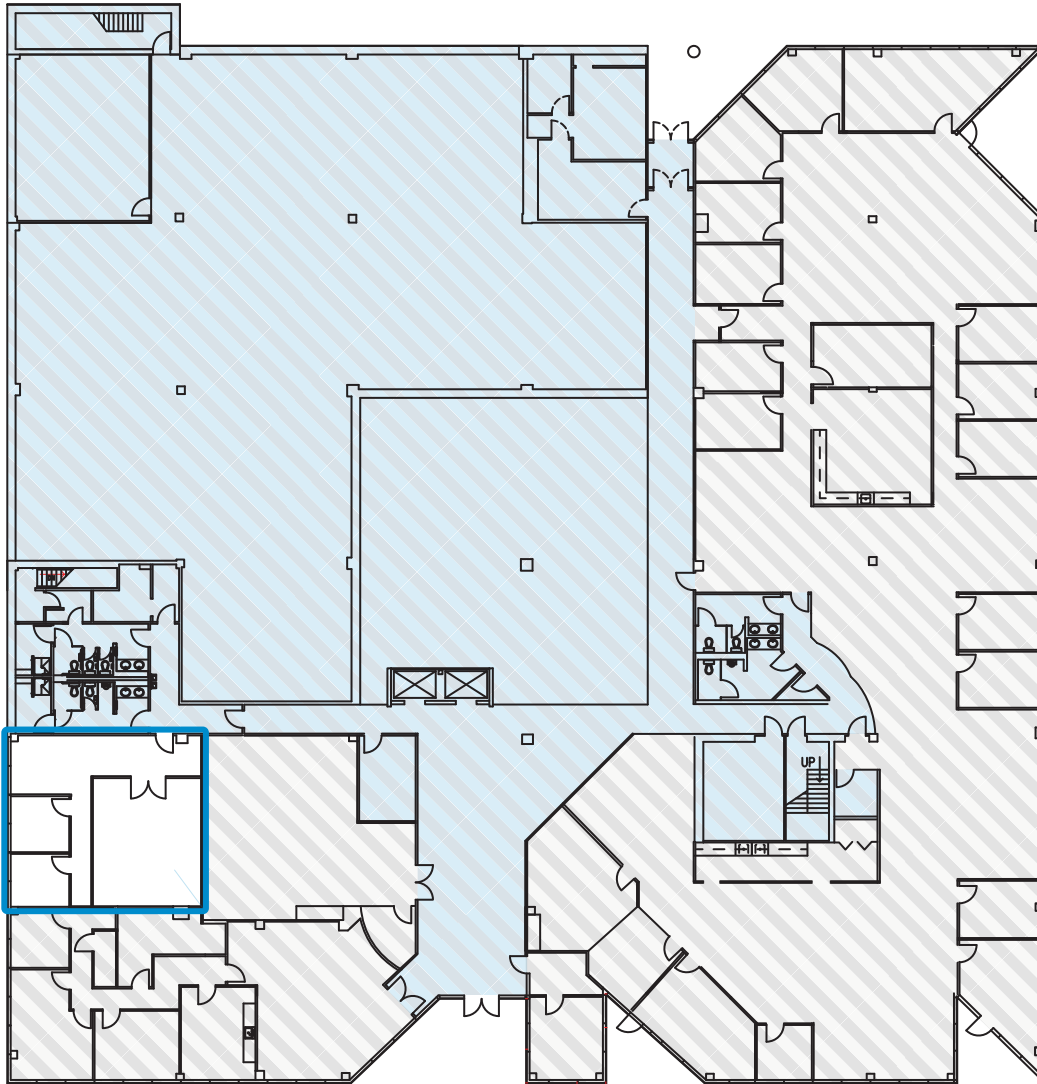
RICHARD PADDOCK
(512) 538-0057
paddock@hpitx.com



No warranty or representation, expressed or implied, is made as to the accuracy of the information contained herein, and same is submitted subject to errors, omissions, change of price, rental or other conditions, withdrawal without notice, and to any special listing conditions imposed by the principals.

WILD BASIN II

1ST FLOOR - FLOOR PLAN

SUITE 160 1,180 RSF



 -- Available Space  -- Not Included  -- Core Elements



J.D. LEWIS
(512) 538-0064
jdlewis@hpitx.com

CHRIS PRICE
(512) 538-1029
price@hpitx.com

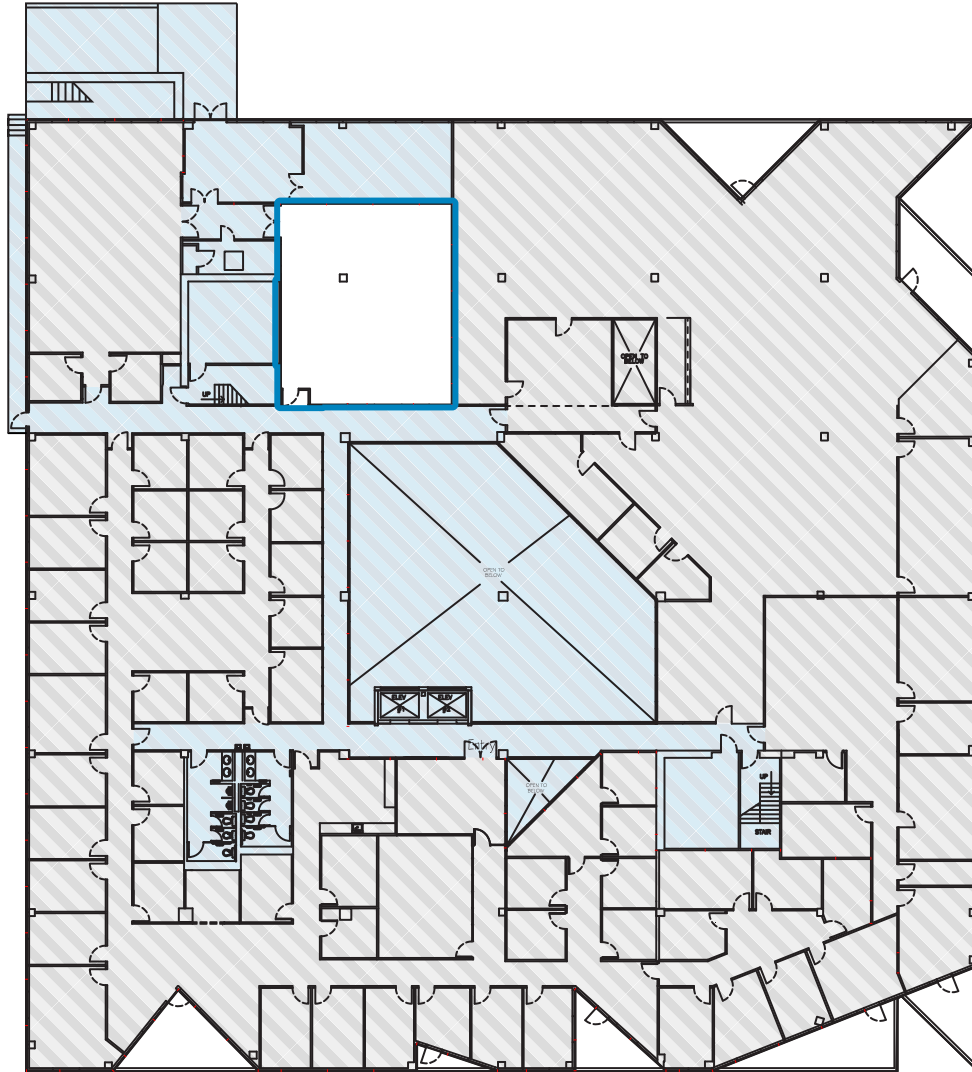
RICHARD PADDOCK
(512) 538-0057
paddock@hpitx.com



No warranty or representation, expressed or implied, is made as to the accuracy of the information contained herein, and same is submitted subject to errors, omissions, change of price, rental or other conditions, withdrawal without notice, and to any special listing conditions imposed by the principals.

WILD BASIN II

2ND FLOOR - FLOOR PLAN

SUITE 215
1,614 RSF



 -- Available Space  -- Not Included  -- Core Elements



J.D. LEWIS
(512) 538-0064
jdlewis@hpitx.com

CHRIS PRICE
(512) 538-1029
price@hpitx.com

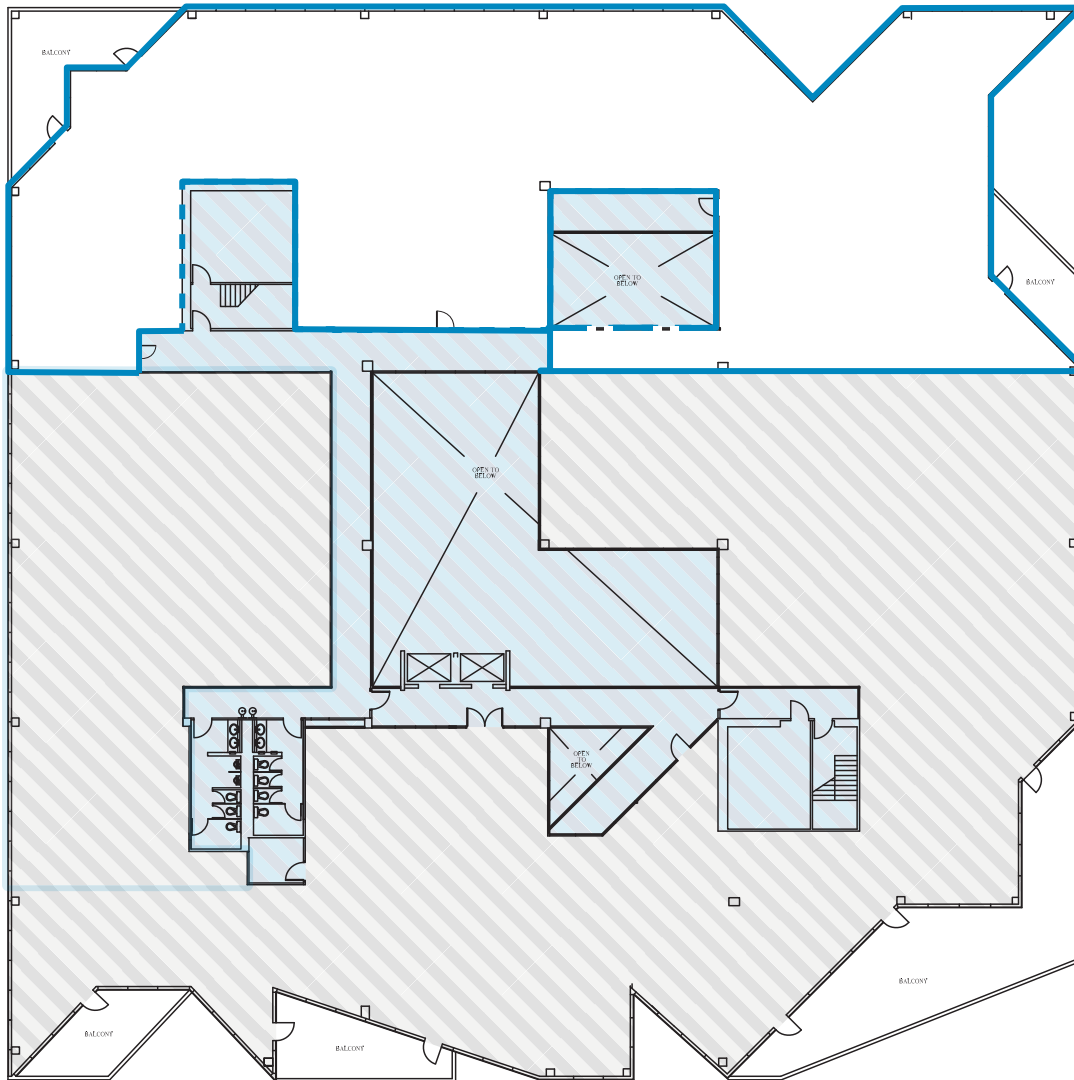
RICHARD PADDOCK
(512) 538-0057
paddock@hpitx.com

No warranty or representation, expressed or implied, is made as to the accuracy of the information contained herein, and same is submitted subject to errors, omissions, change of price, rental or other conditions, withdrawal without notice, and to any special listing conditions imposed by the principals.

WILD BASIN II

3RD FLOOR - FLOOR PLAN

SUITE 370 10,483 RSF



□ -- Available Space ▨ -- Not Included ■ -- Core Elements



J.D. LEWIS
(512) 538-0064
jdlewis@hpitx.com

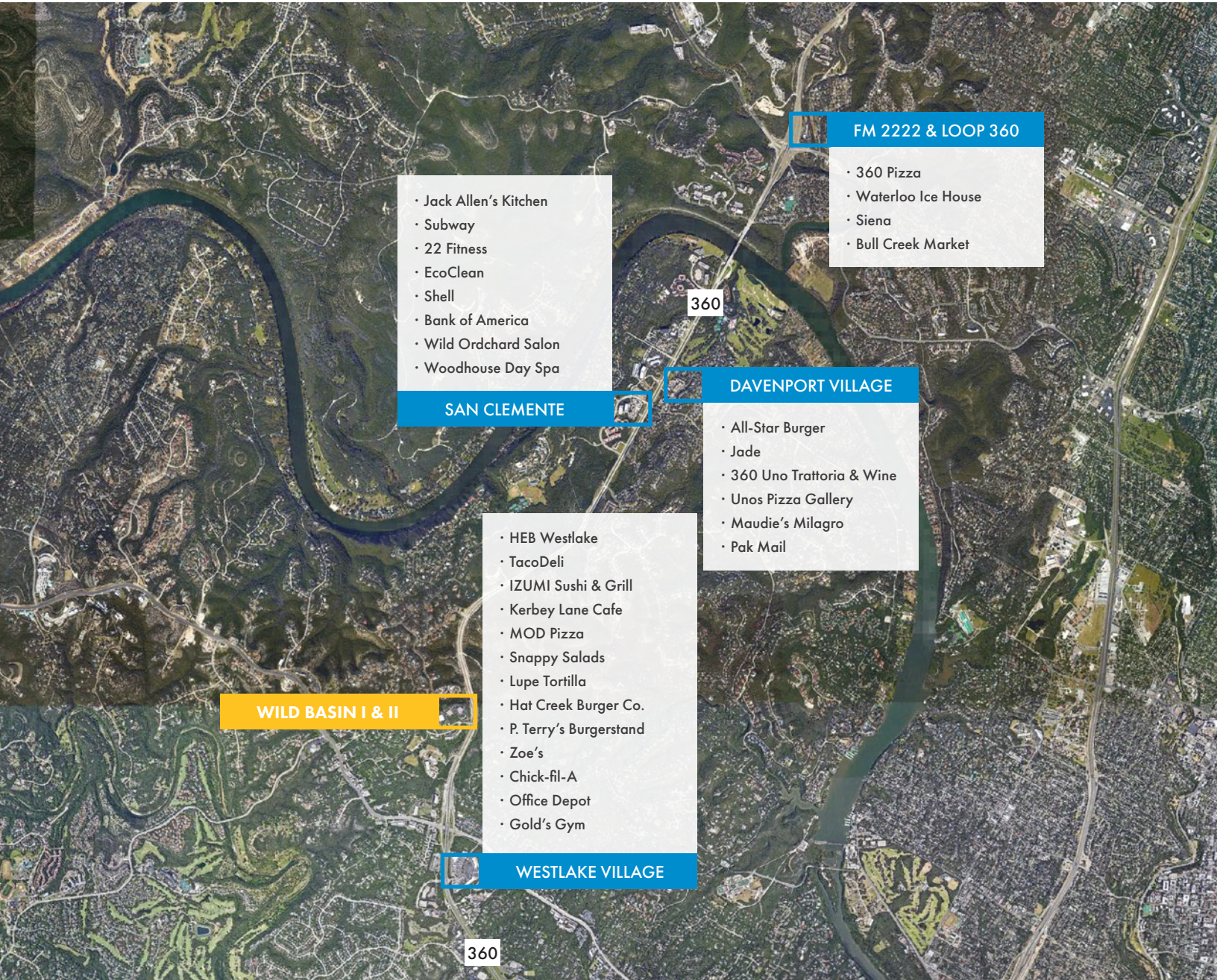
CHRIS PRICE
(512) 538-1029
price@hpitx.com

RICHARD PADDOCK
(512) 538-0057
paddock@hpitx.com

No warranty or representation, expressed or implied, is made as to the accuracy of the information contained herein, and same is submitted subject to errors, omissions, change of price, rental or other conditions, withdrawal without notice, and to any special listing conditions imposed by the principals.

WILD BASIN II

NEARBY AMENITIES



WILD BASIN I & II

SAN CLEMENTE

- Jack Allen's Kitchen
- Subway
- 22 Fitness
- EcoClean
- Shell
- Bank of America
- Wild Orchard Salon
- Woodhouse Day Spa

WESTLAKE VILLAGE

- HEB Westlake
- TacoDeli
- IZUMI Sushi & Grill
- Kerbey Lane Cafe
- MOD Pizza
- Snappy Salads
- Lupe Tortilla
- Hat Creek Burger Co.
- P. Terry's Burgerstand
- Zoe's
- Chick-fil-A
- Office Depot
- Gold's Gym

DAVENPORT VILLAGE

- All-Star Burger
- Jade
- 360 Uno Trattoria & Wine
- Unos Pizza Gallery
- Maudie's Milagro
- Pak Mail

FM 2222 & LOOP 360

- 360 Pizza
- Waterloo Ice House
- Siena
- Bull Creek Market



J.D. LEWIS

(512) 538-0064

jdlewis@hpitx.com

CHRIS PRICE

(512) 538-1029

price@hpitx.com

RICHARD PADDOCK

(512) 538-0057

paddock@hpitx.com

No warranty or representation, expressed or implied, is made as to the accuracy of the information contained herein, and same is submitted subject to errors, omissions, change of price, rental or other conditions, withdrawal without notice, and to any special listing conditions imposed by the principals.