

# FOR SALE

## CAR WASH OPPORTUNITY

NNA NAGLE LANE - RATHDRUM, ID

### Ready-to-Build Car Wash Development Site at Nagel Lane & Hwy 41



DONNIE MURRELL  
208-758-7539  
donniee7foldrealty.com

DON MURRELL SR  
208-660-5583  
gdmurrell@yahoo.com

**BERKSHIRE HATHAWAY** | JACKLIN REAL ESTATE

This information has been secured from sources believed to be reliable, but no representations or warranties are made, expressed or implied, as to the accuracy of the information. References to square footage are approximate. Buyer and tenant must verify the information and bears all risk for any inaccuracies. All quoted prices are subject to change without notice.

# PROPERTY

NNA NAGLE LANE - RATHDRUM, ID



## PROPERTY HIGHLIGHTS

- **Prime Location & High Visibility:** Strategically positioned at the newly signalized intersection of Nagel Road & Highway 41 in Rathdrum with excellent traffic counts and no car wash tunnel competitors nearby.
- **Innovative & Eco-Friendly Design:** An 85-foot express car wash tunnel featuring solar power, EV charging stations, and water recycling for a sustainable, high-efficiency operation.
- **Ready-to-Build with Plans:** Complete with detailed business and site plans at a cost of over \$65,000, city-ready construction documents, and potential for additional revenue streams like food truck concessions.
- **Expert Partnership for Success:** Supported by Sonny's Enterprises, the industry leader, ensuring top-tier equipment, streamlined operations and a profitable turnkey opportunity.

**PRICE: \$629,000 (\$15.04/SF)**

## PROPERTY INFO

- .96 Acres (41,761 SF)
- Phase 1 Report Complete
- Utilities - Water, Sewer, Gas & Data
- Zoning - C-1 General Commercial District
- 6.5 miles to I-90



DONNIE MURRELL  
208-758-7539  
donnie@7foldrealty.com

DON MURRELL SR  
208-660-5583  
gdmurrell@yahoo.com

**BERKSHIRE HATHAWAY** | JACKLIN REAL ESTATE

# FOR SALE

## CAR WASH OPPORTUNITY

NNA NAGLE LANE - RATHDRUM, ID



RATHDRUM COMMERCIAL PARK PROPERTY  
 SW CORNER OF THE INTERSECTION OF W. NAGLE LANE AND HIGHWAY 41  
 KOOTENAI COUNTY PARCEL NUMBER R6000000A0020  
 RATHDRUM, ID 83858

ALLWEST PROJECT NO. 120-442E



### THE WASH RATHDRUM SITE IMPROVEMENT PLANS

RATHDRUM COMMERCIAL PARK, LT 2 S&W 4 CX RW S151N05W (PARCEL NUMBER: P-8000-004-002-AJ)  
 LOCATED IN THE NE 1/4 OF SEC. 01, T.51N., R.5W., S.M.,  
 CITY OF RATHDRUM, KOOTENAI COUNTY, IDAHO

NAGLE LANE LLC  
 8280 N UPLANDS DR  
 HAYDEN, ID 83835



DATE: NOVEMBER 24, 2020

PREPARED FOR:

PREPARED BY:



DONNIE MURRELL  
 208-758-7539  
 donnie@7foldrealty.com

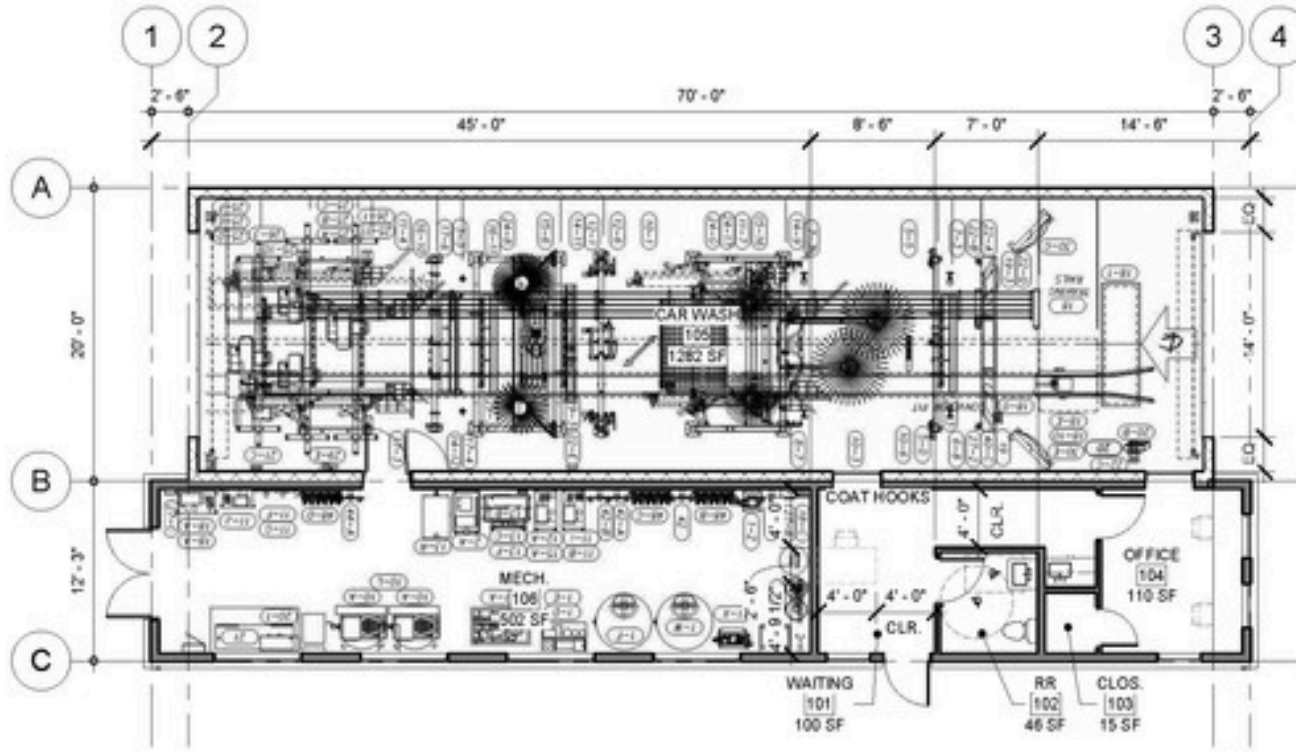
DON MURRELL SR  
 208-660-5583  
 gdmurrell@yahoo.com

**BERKSHIRE HATHAWAY** | JACKLIN REAL ESTATE

# FOR SALE

## CAR WASH OPPORTUNITY

NNA NAGLE LANE - RATHDRUM, ID



EXTRA TECH  
NEWFORM

1 PLAN CONCEPT - THE WASH  
100 1/8" = 1'-0"



DONNIE MURRELL  
208-758-7539  
donnie@7foldrealty.com

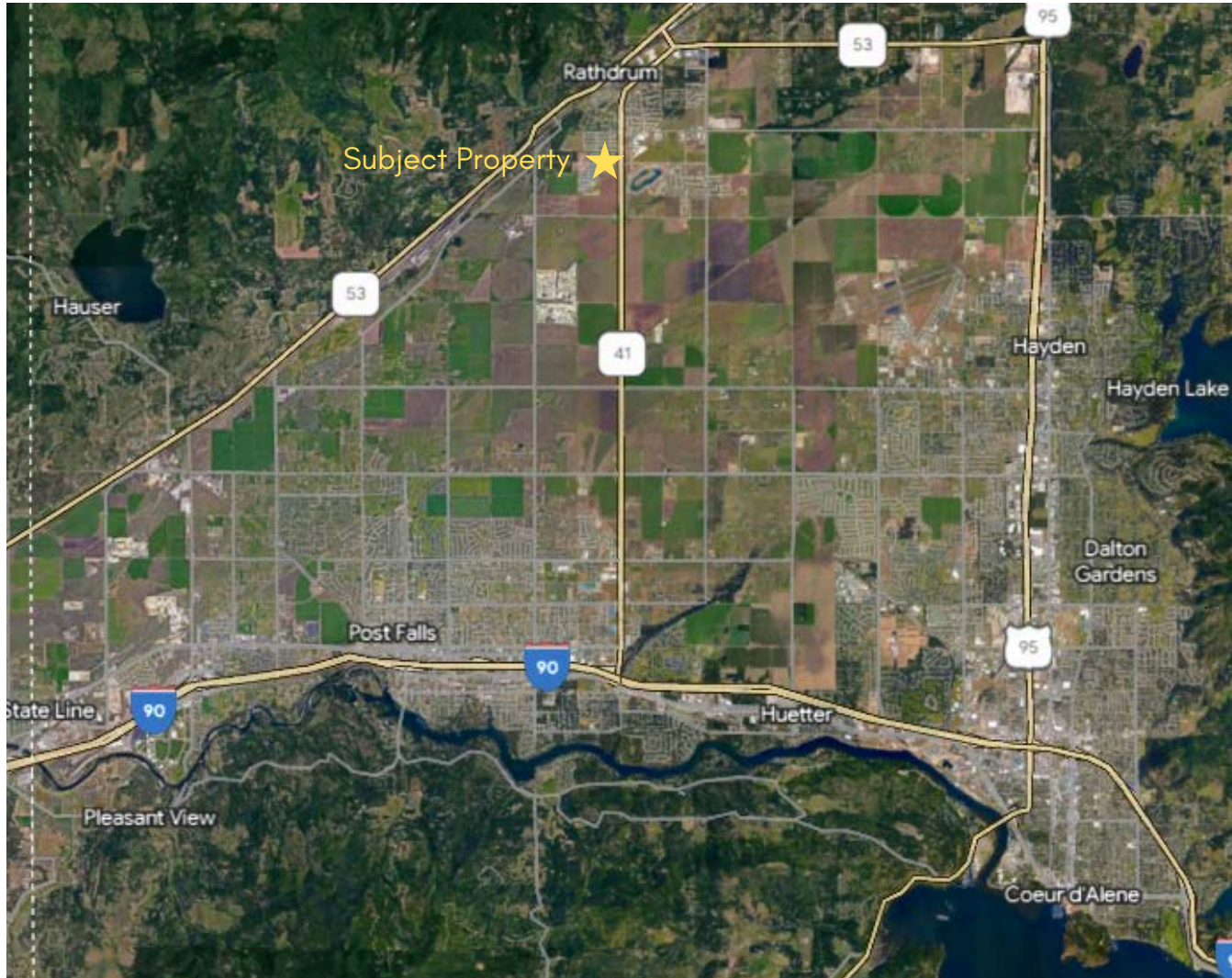
DON MURRELL SR  
208-660-5583  
gdmurrell@yahoo.com

BERKSHIRE HATHAWAY | JACKLIN REAL ESTATE

This information has been secured from sources believed to be reliable, but no representations or warranties are made, expressed or implied, as to the accuracy of the information. References to square footage are approximate. Buyer and tenant must verify the information and bears all risk for any inaccuracies. All quoted prices are subject to change without notice.

# PROPERTY

NNA NAGLE LANE - RATHDRUM, ID



**7FOLD**  
REALTY  
ADVISORS

DONNIE MURRELL  
208-758-7539  
donnie@7foldrealty.com

DON MURRELL SR  
208-660-5583  
gdmurrell@yahoo.com

**BERKSHIRE** | JACKLIN  
**HATHAWAY** | REAL ESTATE

This information has been secured from sources believed to be reliable, but no representations or warranties are made, expressed or implied, as to the accuracy of the information. References to square footage are approximate. Buyer and tenant must verify the information and bears all risk for any inaccuracies. All quoted prices are subject to change without notice.