



For Lease

1431 MERRILL DRIVE LITTLE ROCK, AR

FEATURES:

- Zoned C-3
- Building signage
- Furnished
- Kitchen & breakroom
- Front door parking
- Rear access to suite
- Excellent corner lot visibility
- Proximity to popular shopping centers and restaurants.
- Easy access to I-630 & I-430.

SUITE H

2nd Floor
3,440 SF +/-

NNN LEASE

Base Rent
\$20.00/sf/yr

+
Est. CAM
\$3.00/sf/yr

This beautifully renovated and furnished space is ideal for professional offices or service firms seeking street presence, and easy access

GEORGE PETROV,
PRINCIPAL BROKER



www.p4realtygroup.com



george@p4realtygroup.com

O: 501/224-9600

C: 501/413-3664

1431 MERRILL DRIVE

LITTLE ROCK, AR 72211

SUITE H - 3,440 SF +/-

P4
Realty Group

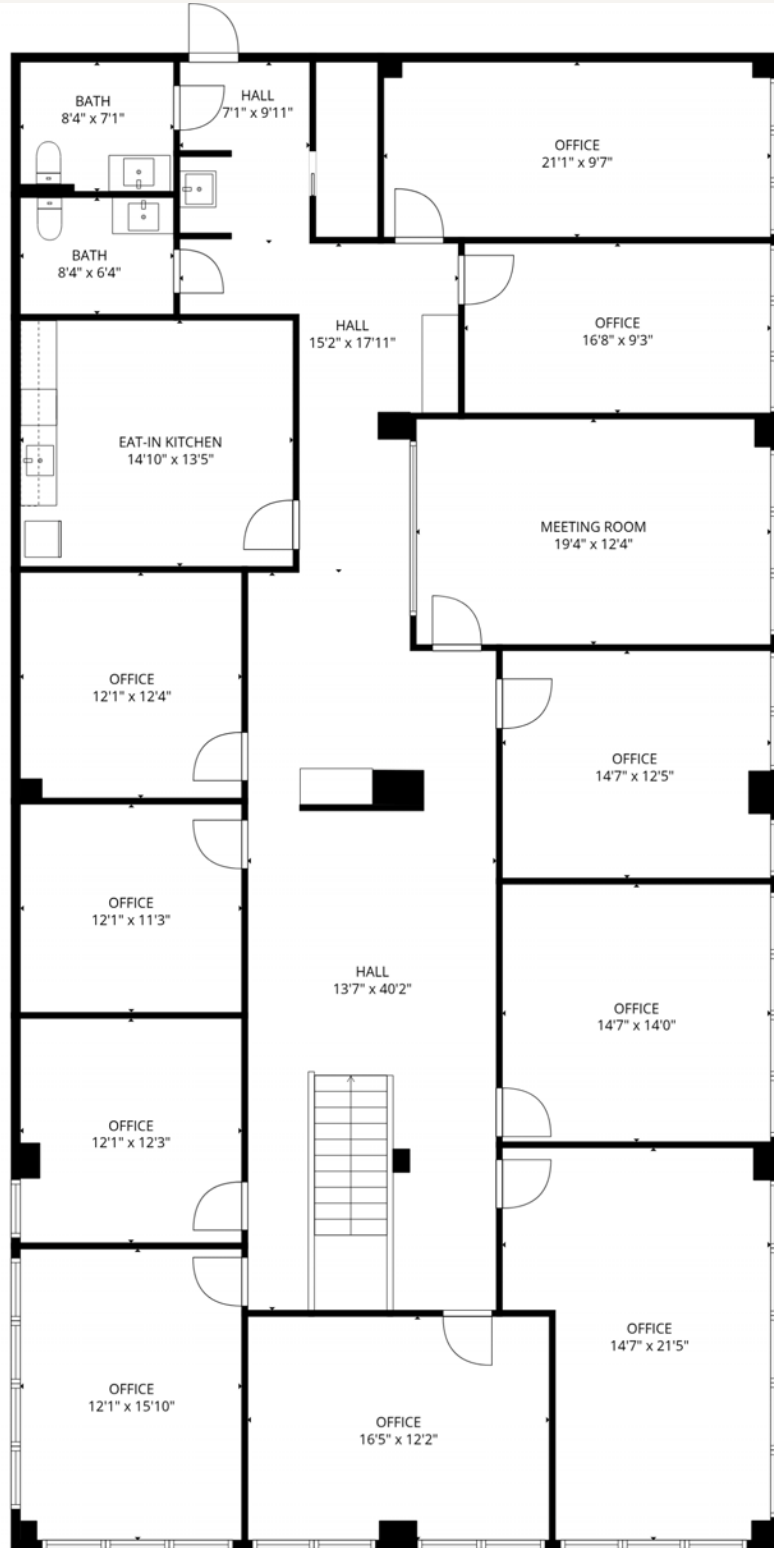
Floor Plan



Please visit our website:
P4realtygroup.com
for a 3D virtual tour of this
space.

PRESENTED BY:

George Petrov,
Principal Broker
501/224-9600
george@p4realtygroup.com



1431 MERRILL DRIVE

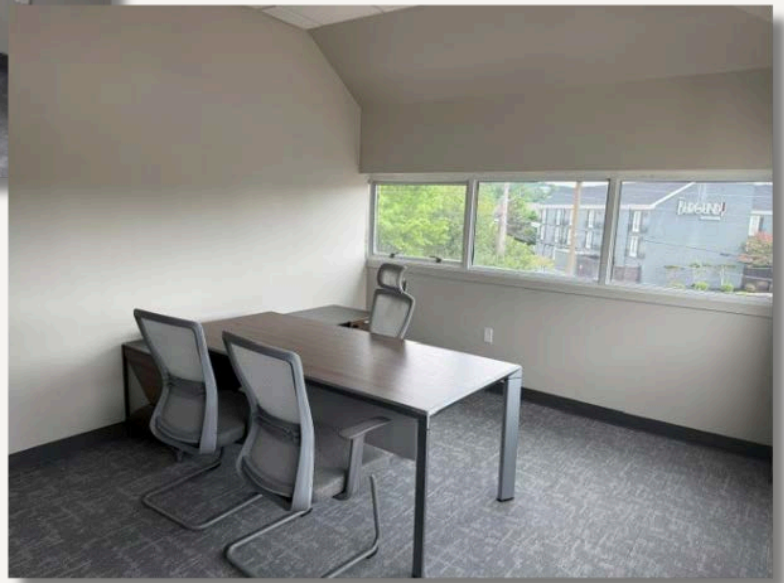
LITTLE ROCK, AR 72211

SUITE H - 3,440 SF +/-

P4
Realty Group



Interior Photos



PRESENTED BY:

George Petrov,
Principal Broker

☎ 501/224-9600

✉ george@p4realtygroup.com



1431 MERRILL DRIVE

LITTLE ROCK, AR 72211

Location Details

P4
Realty Group



PRESENTED BY:

George Petrov,
Principal Broker

☎ 501/224-9600

✉ george@p4realtygroup.com



1431 MERRILL DRIVE

LITTLE ROCK, AR 72211

Area Map

P4
Realty Group

