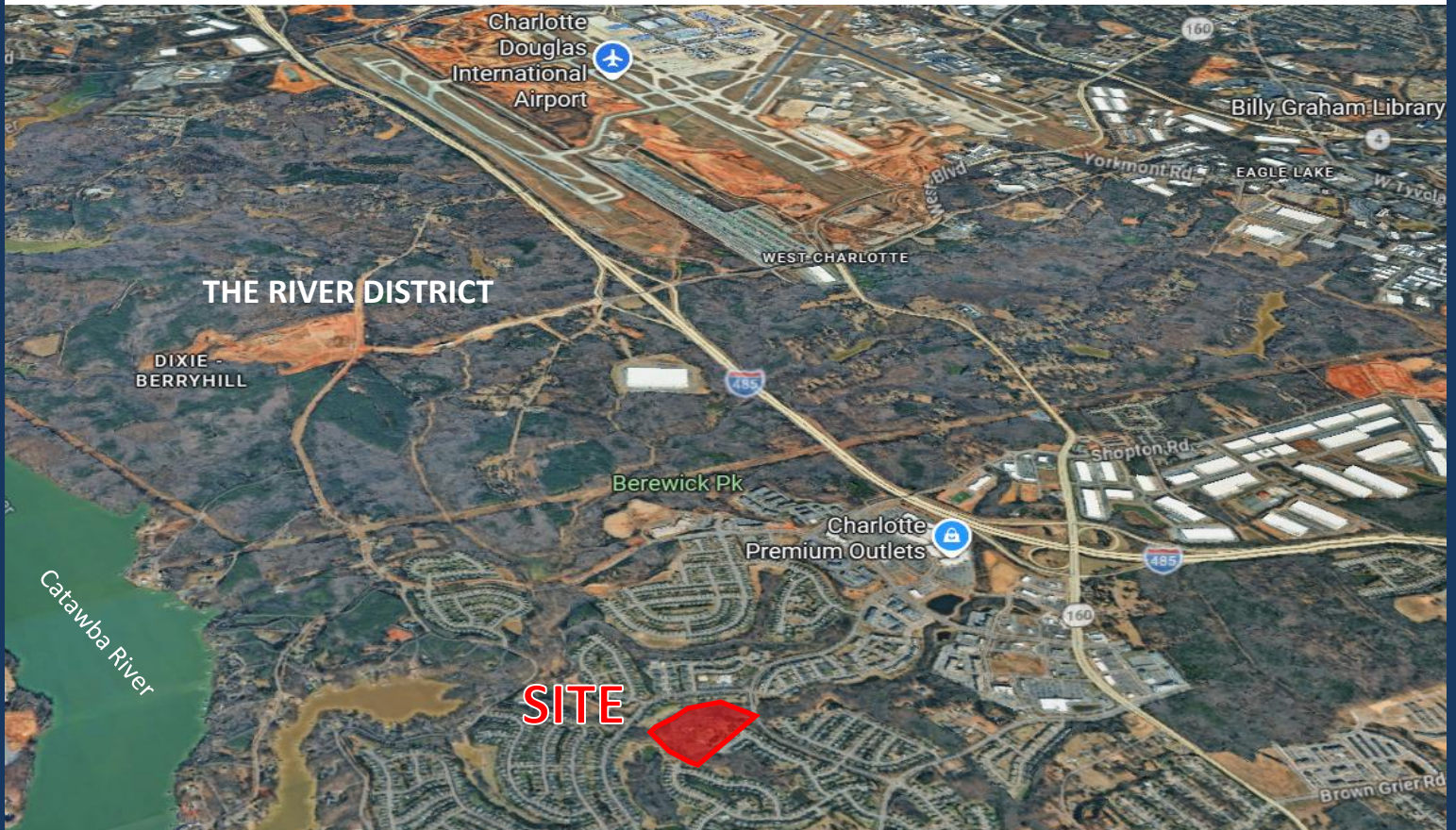


# PRIME INFILL DEVELOPMENT LAND FOR SALE

+/-9.39 acres | 6435 BEREWICK COMMONS PY, CHARLOTTE NC 28278



## PROPERTY FEATURES

- +/- 9.39 acres of infill residential development land
- Located in the core of highly desirable Berewick
- Current zoning N1-A
- Conceptual site plan shows 55 TH units under N1-F
- Water/sewer accessible to Site
- Level and rolling topography
- 1 mile to Charlotte Premium Outlets
- 9 miles to Charlotte Douglas International Airport
- 11 miles to Uptown Charlotte
- Parcel ID: 19923112 and 19923110



For more information, please contact:

Daniel J. Burns  
704-458-9065  
dburns@towerpg.com

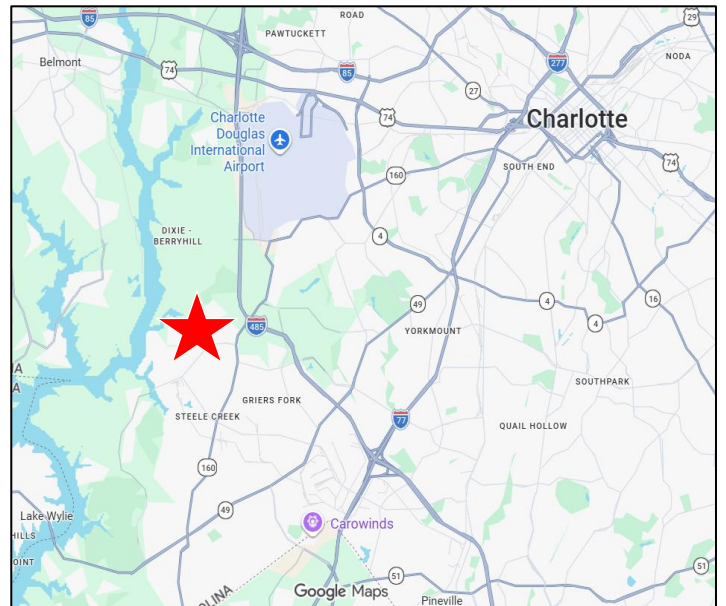
Tower Property Group  
124 W. John St, Suite 101  
Matthews, NC 28105

**CALL FOR PRICING**

**[towerpg.com](http://towerpg.com)**

# PRIME INFILL DEVELOPMENT LAND FOR SALE

+/-9.39 acres | 6435 BEREWICK COMMONS PY, CHARLOTTE NC 28278



All information contained herein is from sources deemed reliable; however, no representation or warranty is made to its accuracy.

# PRIME INFILL DEVELOPMENT LAND FOR SALE

+/-9.39 acres | 6435 BEREWICK COMMONS PY, CHARLOTTE NC 28278



This conceptual drawing is for planning purposes only.  
Site information was obtained from publicly available deeds, plats, tax records, and GIS data.  
No physical survey was conducted of the site.  
All features shown are illustrative and not intended to represent their precise location.