

# FOR LEASE

## MEDICAL DENTAL SPACE



**1385 E 12 MILE RD**  
**MADISON HEIGHTS, MI 48071**

### PROPERTY HIGHLIGHTS:

- Premier 3 story ±18,000 SF medical office building
- 5,500 SF built out medical suite available on 1st floor with lobby entry
- LL - 1,500 SF general medical, testing or lab space available
- Ideal for any general medical urgent care or medical specialty
- Easy access from parking lot
- Building signage and monument signage rights
- MRI mobile pad with electricity connection available
- Well maintained throughout
- I-75 and I-696 access approximately 1 mile west
- 12 Mile Road east of John R Road access

The information provided herein along with any attachment(s) was obtained from sources believed to be reliable, however, Friedman Real Estate makes no guarantees, warranties, or representations as to the completeness or accuracy of such information and legal counsel is advised. All information provided is subject to verification and no liability for reliance on such information or errors or omissions is assumed. The presentation of this property is submitted subject to errors, omissions, change of price or conditions, prior sale or lease, or withdrawal without notice. Copyright © 2025 Friedman Real Estate. All rights reserved.

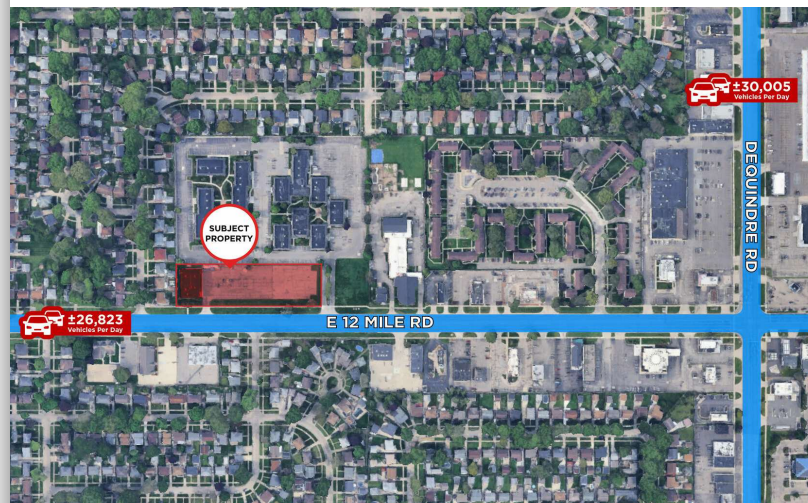
FOR MORE INFORMATION PLEASE CONTACT:



**TODD HAWLEY**  
[todd.hawley@freg.com](mailto:todd.hawley@freg.com)

**248.324.2000**

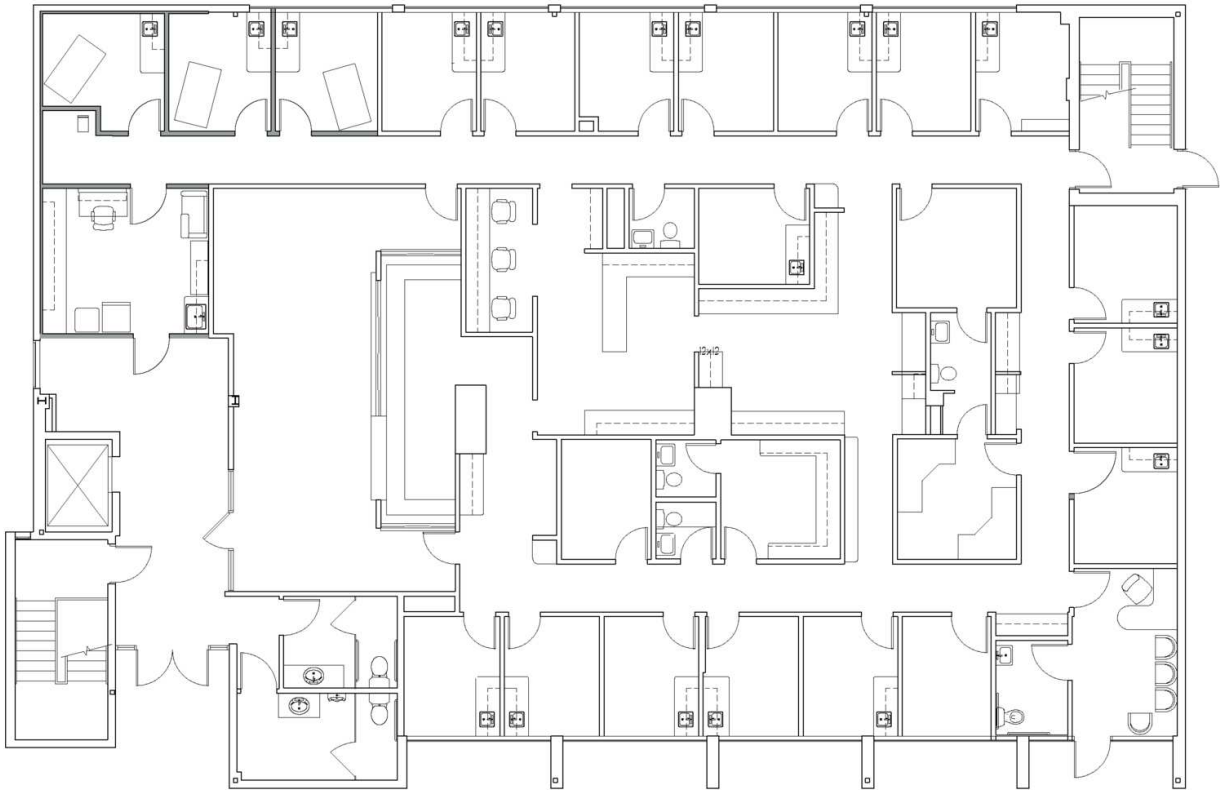
**eCODE 532**



1385 E 12 MILE RD  
PROPERTY **PHOTOS**



**1385 E 12 MILE RD**  
**PROPERTY FLOOR PLAN | SUITE 100**



**Suite 100**  
**5,500 RSF**

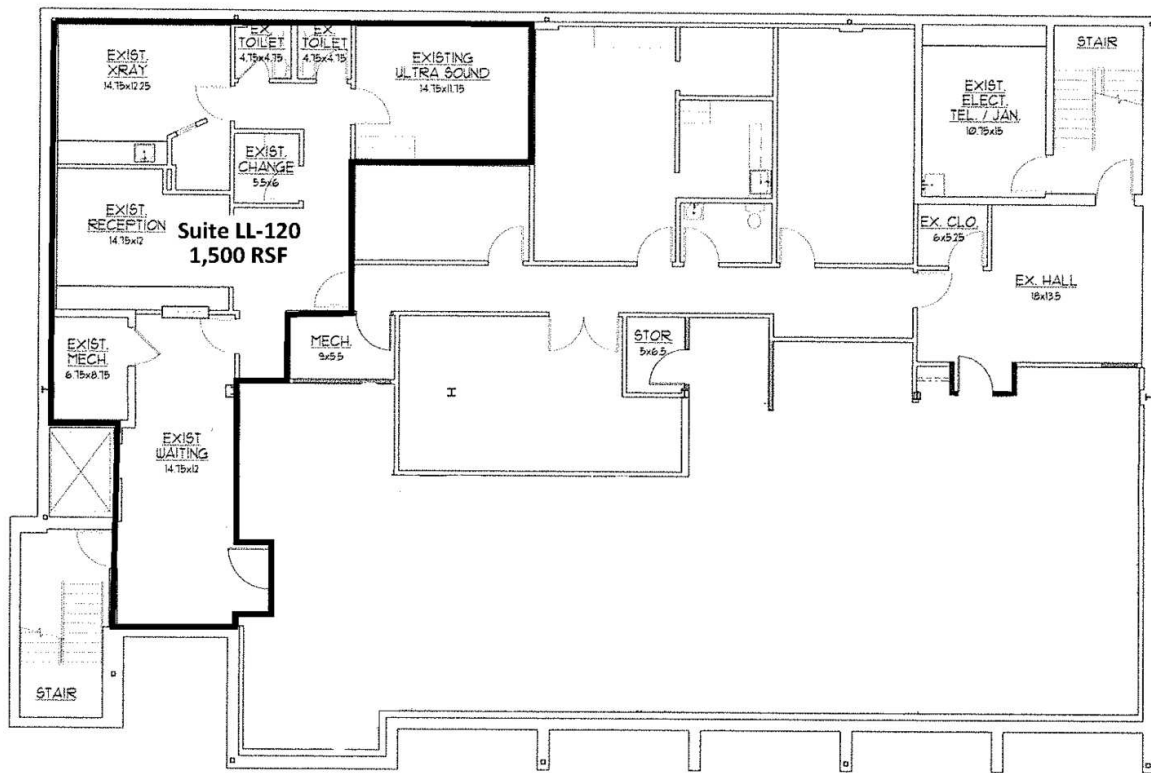
FOR MORE INFORMATION **PLEASE CONTACT:**



**TODD HAWLEY**  
[todd.hawley@freg.com](mailto:todd.hawley@freg.com)

1385 E 12 MILE RD

PROPERTY **FLOOR PLAN | SUITE LL-120**



FOR MORE INFORMATION **PLEASE CONTACT:**



**TODD HAWLEY**  
todd.hawley@freg.com