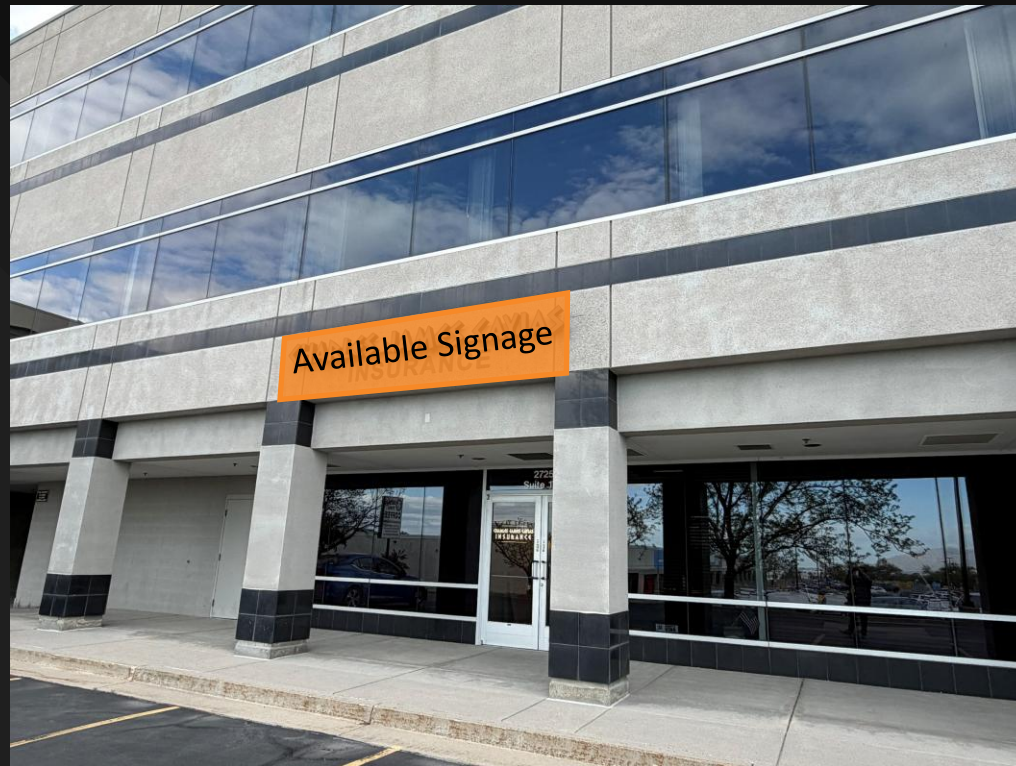


MARKETING FLYER

EASTLAND REGENCY

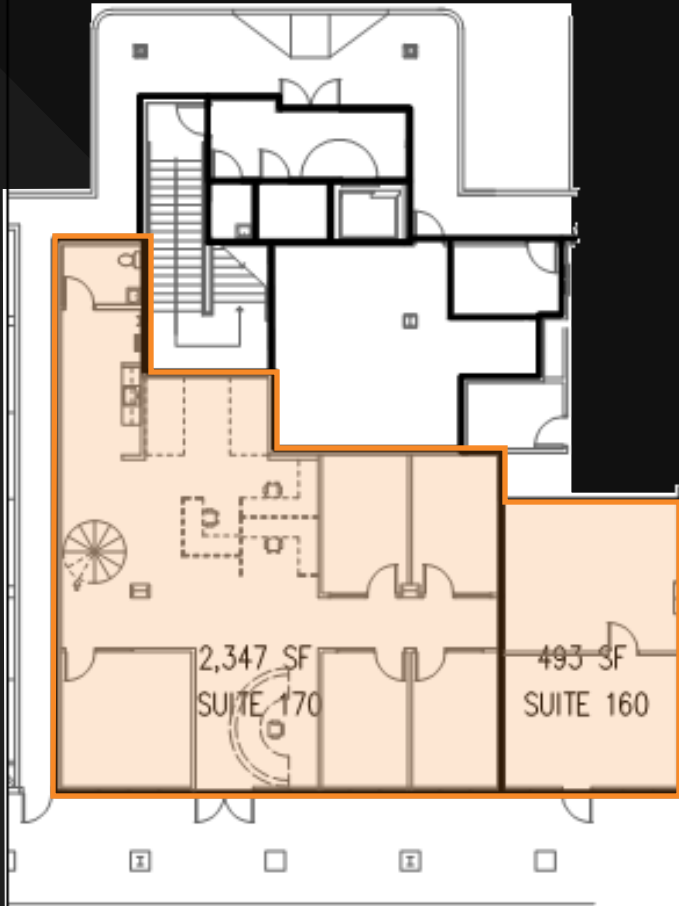
2725 PARLEY'S WAY | SALT LAKE CITY, UT



SPENCER WIXOM

801-633-3891

s_wixom@woodburycorp.com



SUITE 170

1ST FLOOR

- 2,347 – 2,840 RSF
- Private retail entrance
- Move-in ready
- Fantastic exposure
- Signage Available
- Immediate access to I-80 and I-215
- Office with closest proximity to Park City in the valley



