

FOR LEASE | Parkway Marketplace Plaza - Corner of Gulf Freeway and 96 League City Parkway

1320 West League City Parkway, League City, TX 77573



OFFERING SUMMARY

| | |
|----------------|----------------------------------|
| Lease Rate: | \$30.00 SF/yr (NNN) |
| Building Size: | 25,030 SF |
| Available SF: | 1,500 - 16,000 SF |
| Year Built: | 2025 |
| Submarket: | NASA/Clear Lake Retail Submarket |

PROPERTY OVERVIEW

Parkway Marketplace Plaza presents an unparalleled opportunity for medical and retail professionals to establish their presence in the thriving community of League City, Texas. Situated at the bustling intersection of I-45 and 96 League City Parkway, this state-of-the-art plaza offers prime visibility and accessibility. Flexible leasing options available for various medical purposes including dental, physician offices, specialists, dermatologists, pharmacies, and more. Below market rates for brand new construction, offering competitive leasing rates at \$30 per square foot with competitive tenant improvement allowances. Parkway Marketplace Plaza presents an unparalleled opportunity for medical and retail professionals to establish their presence in the thriving community of League City. Don't miss out on this exceptional opportunity to be part of League City's premier medical and retail destination. Delivery set for the end of July!

PROPERTY HIGHLIGHTS

- Strategically positioned in the heart of League City, adjacent to UTMB and MD Anderson facilities
- Conveniently located off League City Parkway, ensuring easy access for both patients and staff.
- Boasting over 129 parking spots, the plaza provides ample parking space for patients and visitors.
- Below market rates for brand new construction, offering competitive leasing rates at \$30 per square foot.

Jason Suchecki

832.956.0547

jason.suchecki@expcommercial.com



FOR LEASE | **Parkway Medical Plaza - Corner of Gulf Freeway and 96 League City Parkway**

1320 West League City Parkway, League City, TX 77573



Jason Suchecki

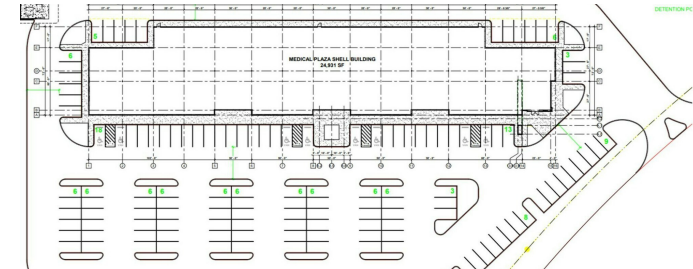
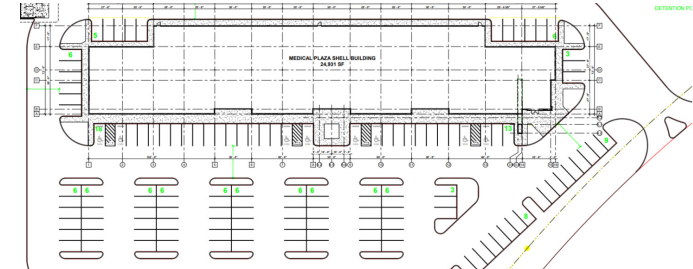
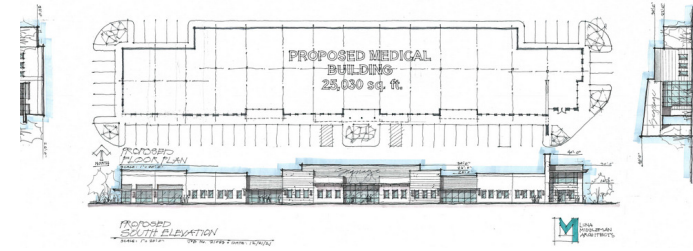
832.956.0547

jason.suchecki@expcommercial.com



FOR LEASE | **Parkway Medical Plaza - Corner of Gulf Freeway and 96 League City Parkway**

1320 West League City Parkway, League City, TX 77573



Jason Suchecki

832.956.0547

jason.suchecki@expcommercial.com



FOR LEASE | **Parkway Medical Plaza - Corner of Gulf Freeway and 96 League City Parkway**

1320 West League City Parkway, League City, TX 77573

| POPULATION | 0.25 MILES | 0.5 MILES | 1 MILE | 3 MILE | 5 MILE |
|--------------------------|-------------------|------------------|---------------|---------------|---------------|
| Total Population | 475 | 1,996 | 8,745 | 61,531 | 171,212 |
| Average Age | 36.3 | 32.8 | 34.0 | 37 | 37.1 |
| Average Age (Male) | 39.8 | 32.6 | 31.9 | 35.9 | 36.1 |
| 36.3Average Age (Female) | 29.4 | 29.9 | 35.9 | 38.2 | 38.2 |

| HOUSEHOLDS & INCOME | 0.25 MILES | 0.5 MILES | 1 MILE | 3 MILE | 5 MILE |
|--------------------------------|-------------------|------------------|---------------|---------------|---------------|
| Total Households | 122 | 614 | 3,037 | 22,864 | 67,029 |
| # of Persons per HH | 3.9 | 3.3 | 2.9 | 2.7 | 2.6 |
| Average HH Income | \$189,940 | \$135,182 | \$114,902 | \$120,678 | \$114,631 |
| Average House Value | \$357,482 | \$280,062 | \$231,868 | \$272,191 | \$276,371 |

2020 American Community Survey (ACS)

Jason Suchecki

832.956.0547

jason.suchecki@expcommercial.com

