

PRIME RETAIL OR OFFICE LOCATION

FOR LEASE

HISTORIC DOWNTOWN SUMMERVILLE

\$3,700.09/MONTH

EXCELLENT LOCATION

139 NORTH MAIN ST. SUMMERVILLE, SC 29483



RE/MAX
COMMERCIAL®

RE/MAX SOUTHERN SHORES
Robert Pratt
(843) 343-6085:cell
robert@robertpratt.com

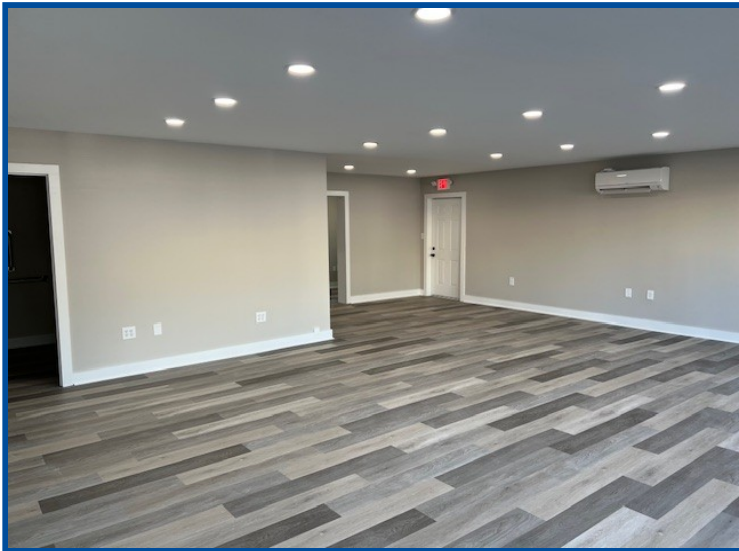
139 NORTH MAIN ST.

| SUMMERVILLE |

SOUTH CAROLINA

HISTORIC DOWNTOWN SUMMERVILLE

\$3,700.09/MONTH



- 967sf newly renovated office/retail building
- Open floor plan with 1 bathroom, small break room, and potential for small private office
- Excellent location in the heart of Downtown Summerville at the corner of Main St. and E. 1st North St. next to KFC
- Dorchester County TMS# 137-07-12-017
- Zoned D-MX (Downtown Mixed Use) in Town of Summerville
- 20,800 VPD (*SCDOT)
- Tenant responsible for monthly base rent of \$2,750 plus NN fees of \$950.09/mo. Total monthly rent is \$3,700.09/mo.

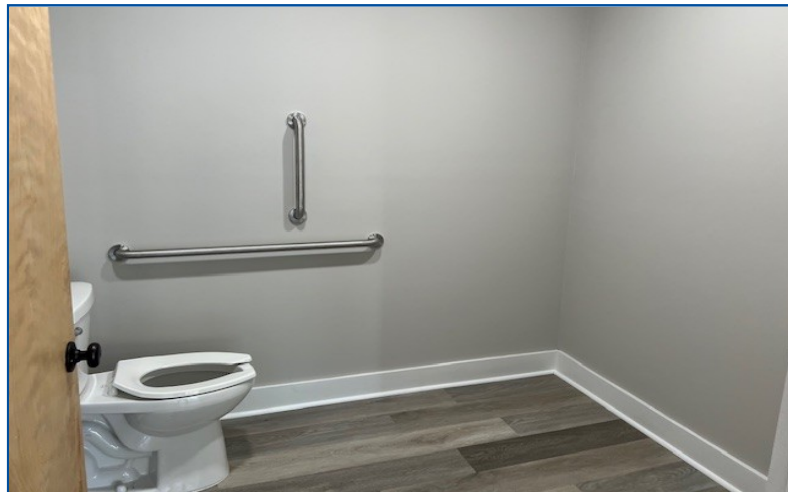
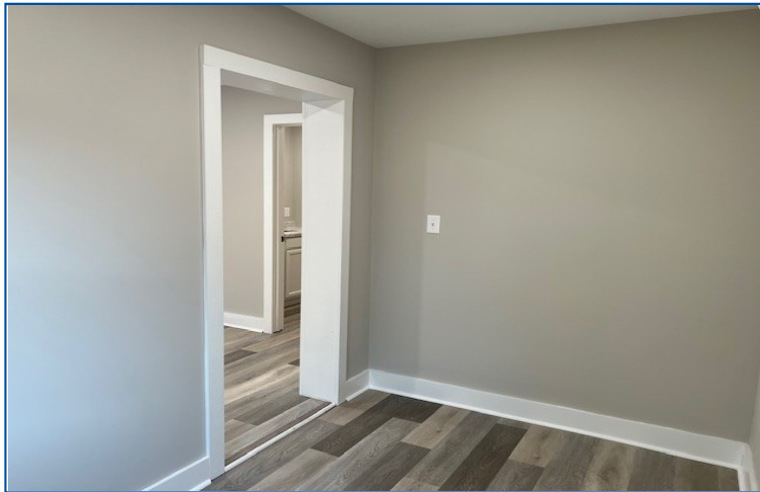


PRIME RETAIL OR OFFICE LOCATION

FOR LEASE

HISTORIC DOWNTOWN SUMMERVILLE

\$3,700.09/MONTH



139 NORTH MAIN ST.

| SUMMERVILLE |

SOUTH CAROLINA

PRIME RETAIL OR OFFICE LOCATION

FOR LEASE

HISTORIC DOWNTOWN SUMMERVILLE

\$3,700.09/MONTH



139 NORTH MAIN ST.

| SUMMERVILLE |

SOUTH CAROLINA