



VALUE INDUSTRIAL PARTNERS, LLC

Industrial Real Estate Investment, Brokerage and Management

477 W. Wrightwood Avenue, Elmhurst, Illinois 60126 TEL: 630-333-1900 FAX: 630-333-1910



8910 W. 192nd Street, Unit F Mokena, Illinois

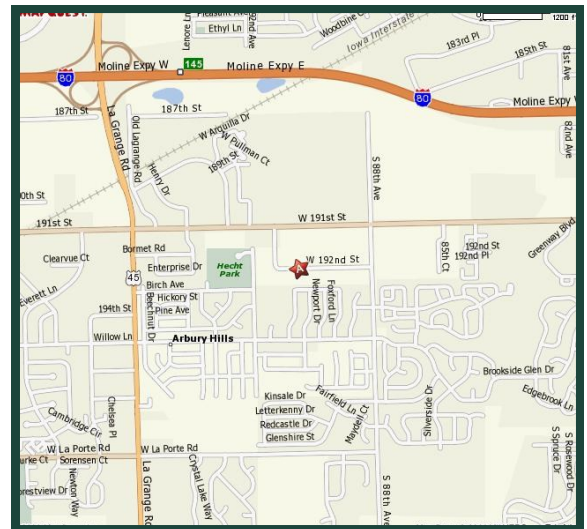
FOR LEASE 7,360 SF

Building Specifications

Available Size:	7,360 Square Feet
Building Size:	68,929 Square Feet
Office:	15%
Ceiling Height:	15'
Power:	200 Amps, 120/208 Volts
Loading:	2 Exterior Docks (Common) 4 Exterior Low Docks (Exclusive)
Bay Size:	40' x 40'
Sprinklers:	Yes
Heat:	Gas
Real Estate Taxes:	Current Stop Included
CAM:	Current Stop Included

Comments

- Professionally owned and managed
- Minutes to I-80 at LaGrange Road or Harlem Avenue
- Minutes to I-355 and I-57 via I-80
- Unique low docks ideal for delivery vans



For Further Information, Please Contact:

Brian P. Gedvilas, Director of Leasing
bgedvilas@valueindustrialpartners.com

Brian M. Liston, Principal
bliston@valueindustrialpartners.com

TEL: 630-333-1900 FAX: 630-333-1910

Officers of the firm have an ownership interest in this property.
Submitted subject to error, change in status, or withdrawal without notice.

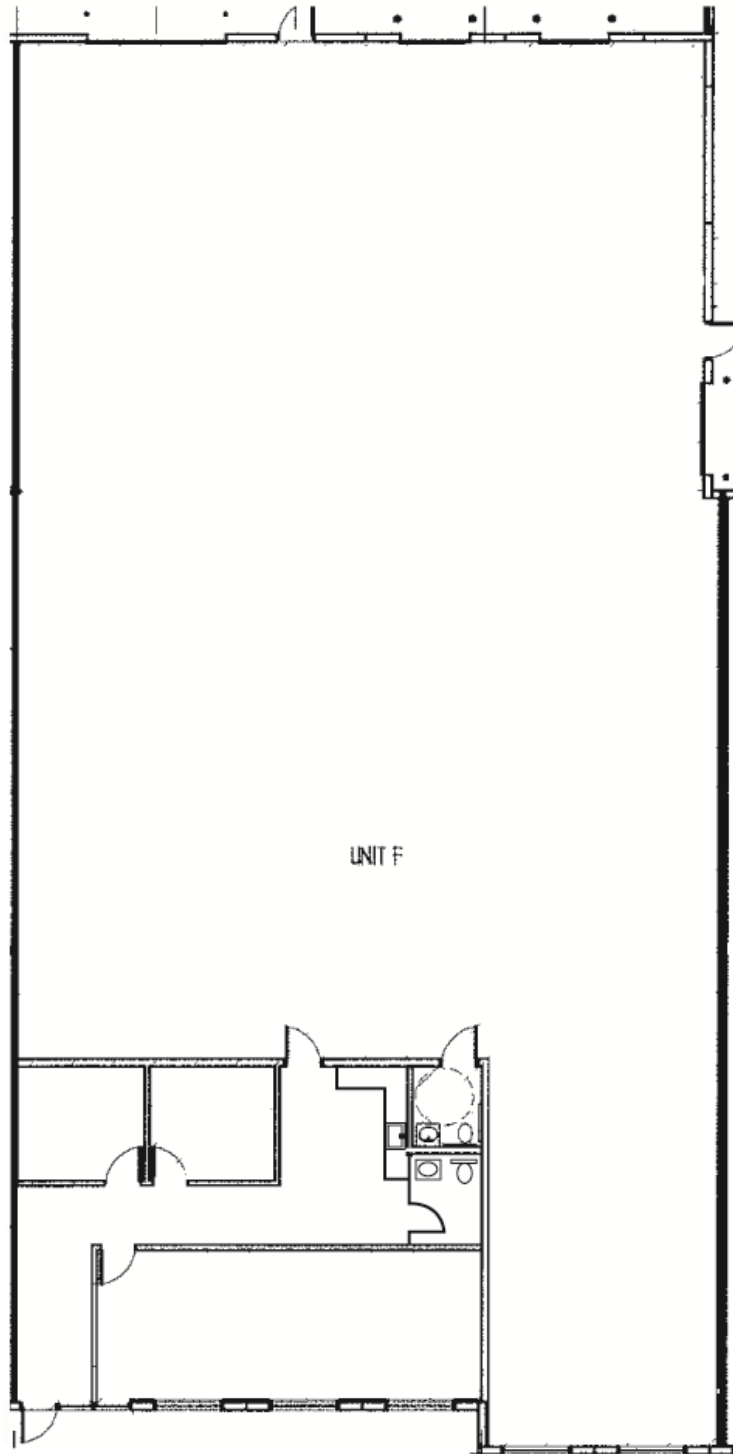


VALUE INDUSTRIAL PARTNERS, LLC

Industrial Real Estate Investment, Brokerage and Management

477 W. Wrightwood Avenue, Elmhurst, Illinois 60126 TEL: 630-333-1900 FAX: 630-333-1910

LAYOUT



Officers of the firm have an ownership interest in this property.
Submitted subject to error, change in status, or withdrawal without notice.