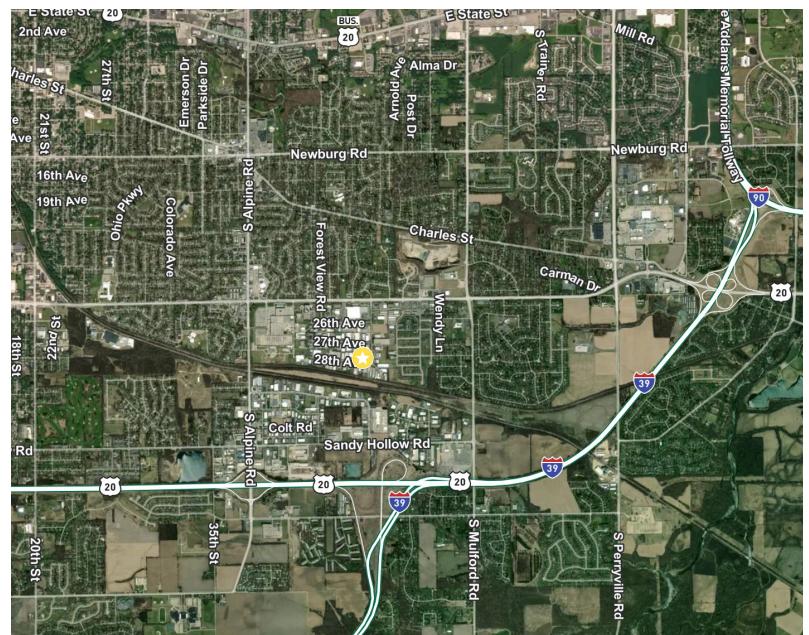


2995 Eastrock Dr. | Rockford, IL



Property Highlights

- + Office space available:
 - 10,000 -23,238 SF Main Level
 - 5,443 SF Garden Level
- + Situated on 3 acre site in Eastrock Industrial Park
- + Approx. 85 parking spaces available
- + 500 - 6,834 SF of industrial space with docks and DID available adjacent to offices
- + 5 - 10 min. to S. Alpine Rd./Bypass 20 interchange which connects to I-39 and I-90



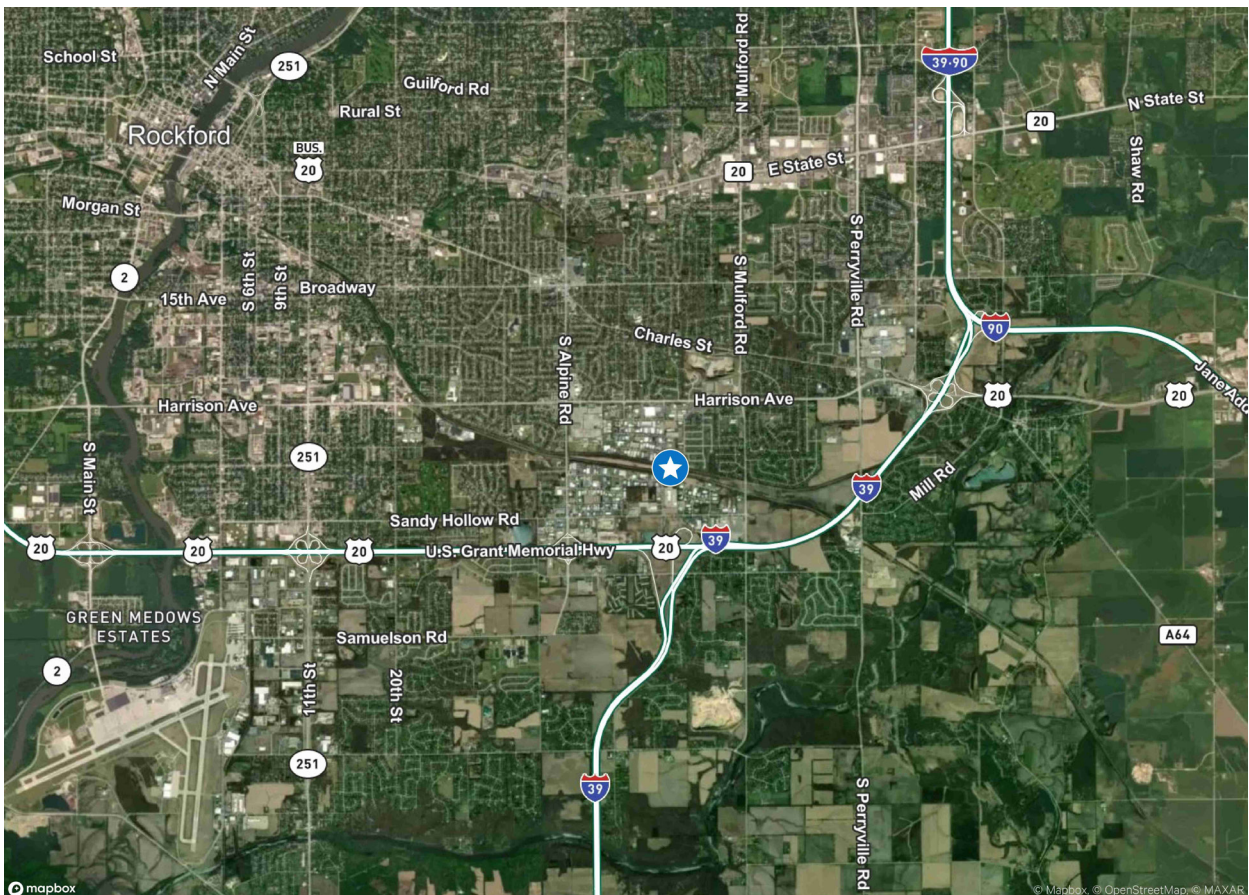
DEMOGRAPHICS	1 MILE	3 MILE	5 MILE
Population	4,822	54,443	114,508
Households	1,935	22,508	48,155
Average Household Income	\$80,190	\$82,325	\$83,652
Daytime Population	7,837	57,199	130,297

TRAFFIC COUNTS	
Eastrock Dr.	3,450 VPD

10,000 - 23,200 SF
2995 Eastrock Dr. | Rockford, IL

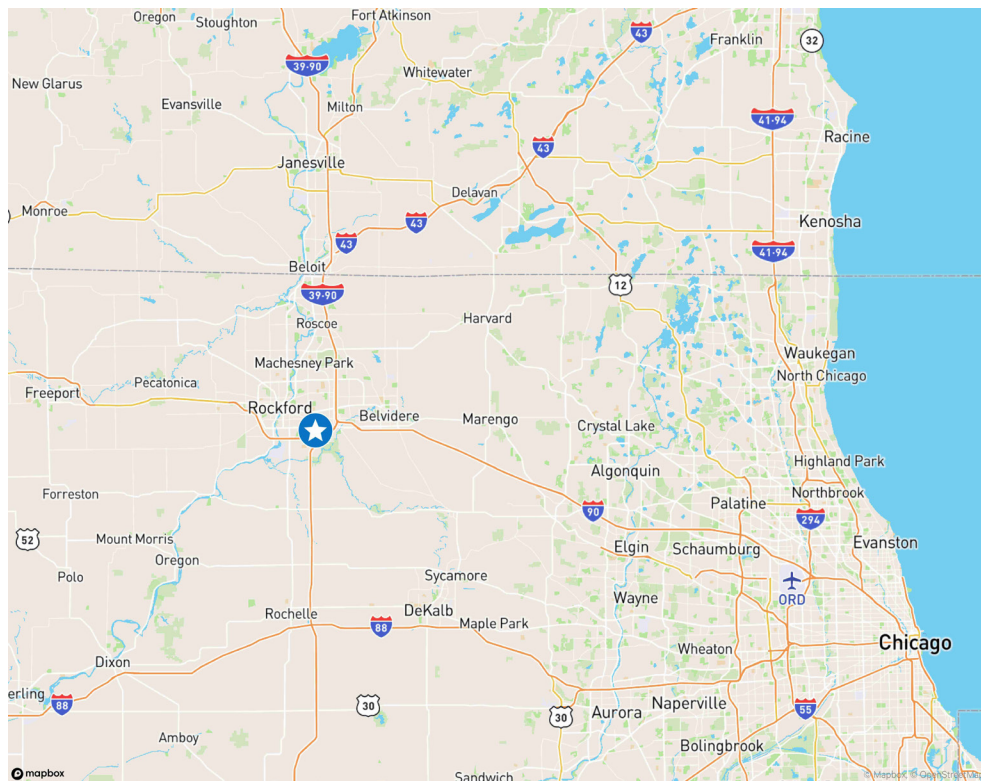
For Lease

FLOOR PLAN



10,000 - 23,200 SF
2995 Eastrock Dr. | Rockford, IL

For Lease



Contact

Karen Walsh
Senior Vice President
+1 815 218 3438
karen.walsh@cbre.com

© 2025 CBRE, Inc. All rights reserved. This information has been obtained from sources believed reliable, but has not been verified for accuracy or completeness. You should conduct a careful, independent investigation of the property and verify all information. Any reliance on this information is solely at your own risk. CBRE and the CBRE logo are service marks of CBRE, Inc. All other marks displayed on this document are the property of their respective owners, and the use of such logos does not imply any affiliation with or endorsement of CBRE. Photos herein are the property of their respective owners. Use of these images without the express written consent of the owner is prohibited.

