

Available For Sale | 14.61 AC

Future Georgetown Retail Land

2601 N IH 35, Georgetown, TX 78628

TRAVIS HICKS, SIOR

Senior Vice President
+1 512 964 8434
travis.hicks@colliers.com

CHASE CLANCY

Senior Vice President
+1 512 317 3790
chase.clancy@colliers.com

MICHAEL MODESETT

Associate
+1 512 964 2276
michael.modesett@colliers.com



Colliers Austin

111 Congress Ave, Suite 750
Austin, TX 78701

14.61 AC | Future Retail Land Available

Traffic Counts

IH 35: 150,167 VPD

Price

Contact Broker



Property Highlights

- Strategically positioned along IH-35 at the hard corner of its junction with SH-130, a vital commercial artery linking Austin, Dallas, and San Antonio, ensuring seamless regional access and high traffic exposure.
- High-exposure hard corner location with dual highway access, benefiting from frontage along both IH-35 and Aviation Drive.
- Boasting over 750 feet of prime IH-35 frontage and 1,250 feet along Aviation Dr, with curb cuts on both the IH-35 frontage road and Aviation Dr for maximum ingress and egress efficiency.
- Situated in Williamson County, one of the fastest-growing counties in the U.S. The property serves a rapidly growing population of over 74,000 residents within a 5-mile radius.
- As of the 2023 U.S. census, Georgetown was the fastest growing city in America with an annual growth of 10%.
- Currently zoned Agricultural but designated as an Employment Center in the City of Georgetown's Future Land Use Plan with retail as a preferred use.
- The non-jurisdictional pond can be filled, allowing full development flexibility to accommodate a variety of uses.
- The Austin MSA retail sector maintains a 96.8% occupancy rate, driven by strong demand and a constrained supply of new space, positioning this site for long-term success.

Trade Area Demographics

	1-Mile	3-Mile	5-Mile
2024 Population	1,820	28,943	74,268
2023-2028 Population Growth Rate	4.83%	3.59%	3.32%
Average Household Income	\$90,139	\$132,321	\$130,463

[View Full Report](#)

Nearby Employers



Georgetown Retail Land

Trade Area Map



Plans & Aerials

© 2025 Colliers International. Information herein has been obtained from sources deemed reliable, however its accuracy cannot be guaranteed. The user is required to conduct their own due diligence and verification.



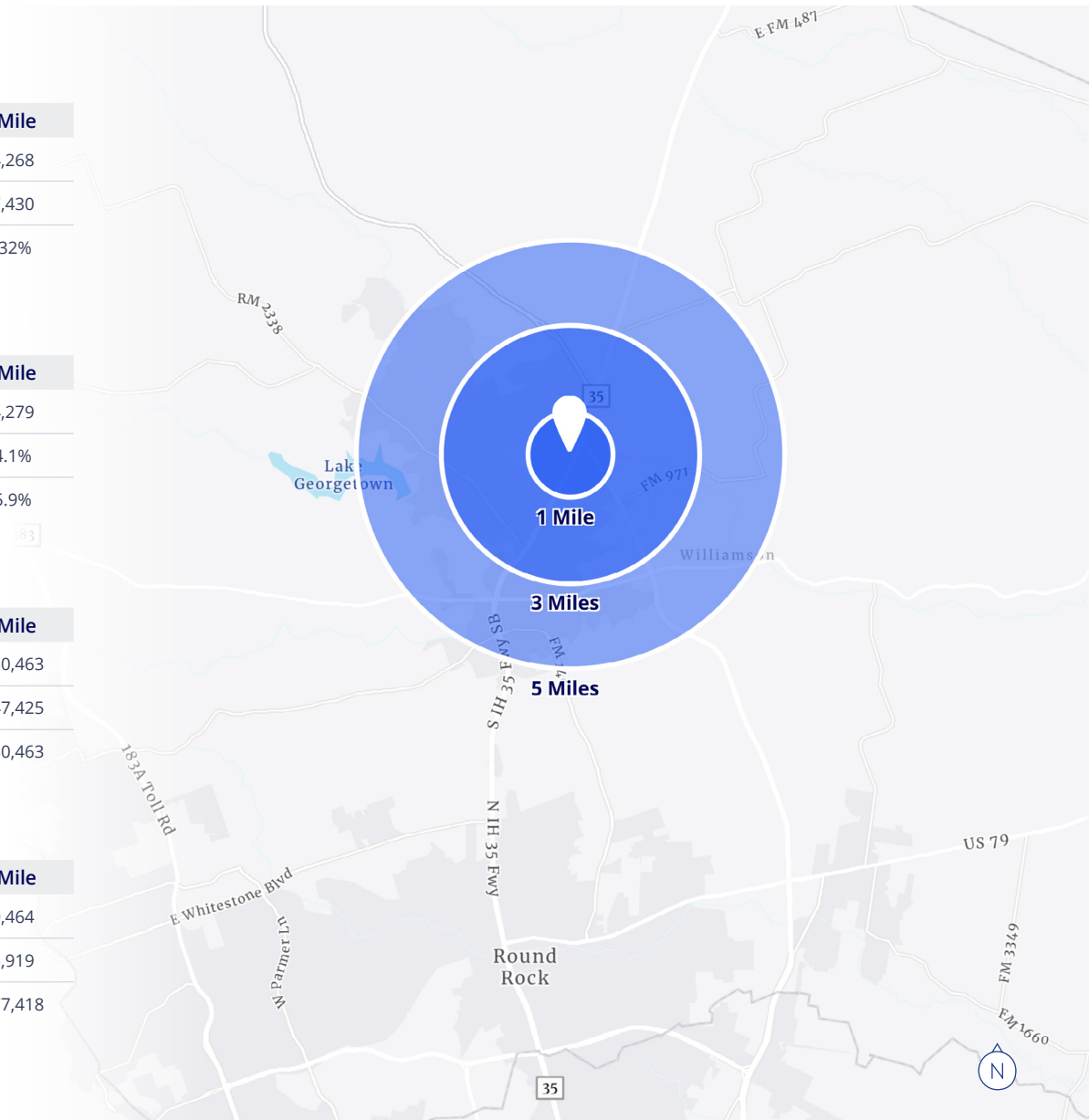


Population	1-Mile	3-Mile	5-Mile
2024 Population	1,820	28,943	74,268
2029 Projected Population	2,304	34,520	87,430
2023-2028 Annual Pop Change (CAGR)	4.83%	3.59%	3.32%

Daytime Population	1-Mile	3-Mile	5-Mile
Total Daytime Population	1,636	26,640	74,279
Daytime Population: Workers	44.4%	43.9%	44.1%
Daytime Population: Residents	55.6%	56.1%	55.9%

Income	1-Mile	3-Mile	5-Mile
2024 Average Household Income (AHHI)	\$90,139	\$132,321	\$130,463
2029 Projected Average Household Income (AHHI)	\$101,874	\$152,092	\$147,425
2024 Median Household Income (MHHI)	\$85,412	\$91,779	\$130,463

Households	1-Mile	3-Mile	5-Mile
2024 Est Households	658	11,886	30,464
2029 Projected Households	841	14,264	35,919
2024 Median Home Value	\$369,286	\$482,765	\$477,418



[View Full Demographic Report](#)



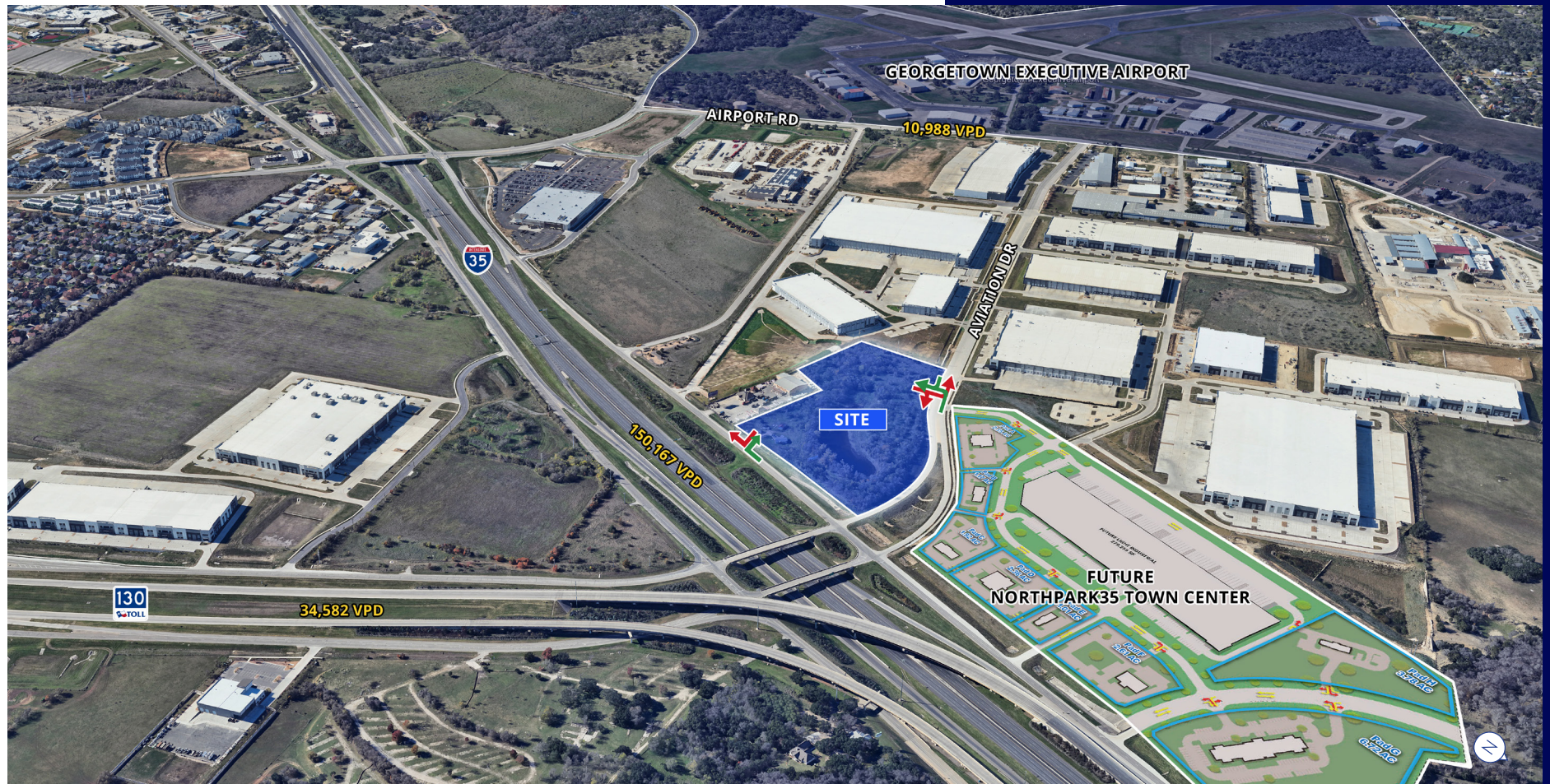
Available For Sale

Colliers

Accelerating success.

Georgetown Retail Land

2601 N IH 35, Georgetown, TX 78628



TRAVIS HICKS, SIOR
Senior Vice President
+1 512 964 8434
travis.hicks@colliers.com

CHASE CLANCY
Senior Vice President
+1 512 317 3790
chase.clancy@colliers.com

MICHAEL MODESETT
Associate
+1 512 964 2726
michael.modesett@colliers.com

Colliers Austin
111 Congress Ave, Suite 750
Austin, TX 78701