



## EXECUTIVE SUMMARY

## 5054 CRAWFORDVILLE HWY

CRAWFORDVILLE, FL 32327

**OFFERING SUMMARY****Sale Price:** \$695,000**Lot Size:** 0.38 Acres**Building Size:** 2,457 SF**Zoning:** Commercial  
Parkway**APN:** 41-25-20-203-0000**PROPERTY OVERVIEW**

Great space that's perfect for various retail or office uses and includes 14 parking spaces. This 2,457 SF property is available for sale. Owner has recently renovated the the entire building.

**LOCATION OVERVIEW**

Outstanding location in Tallahassee, FL! Site is located off the busy Crawfordville Hwy, near Capital Circle SW and across from Publix. Other nearby retailers include Pizza Hut, Publix, Hobbit American Grill, Waffle House, Shell, Sunoco, and Circle K.

[Click Here for Zoning Information](#)

**Bryan Cureton**  
850.545.3687  
bryan@tlgproperty.com

**TLG REAL ESTATE SERVICES**  
3520 Thomasville Road, Suite 200, Tallahassee, FL 32309  
850.385.6363





RETAILER MAP

5054 CRAWFORDVILLE HWY

CRAWFORDVILLE, FL 32327



Map data ©2026 Imagery ©2026 Airbus, Maxar Technologies, Vexcel Imaging US, Inc.

Bryan Cureton  
850.545.3687  
bryan@tlgproperty.com

TLG REAL ESTATE SERVICES  
3520 Thomasville Road, Suite 200, Tallahassee, FL 32309  
850.385.6363



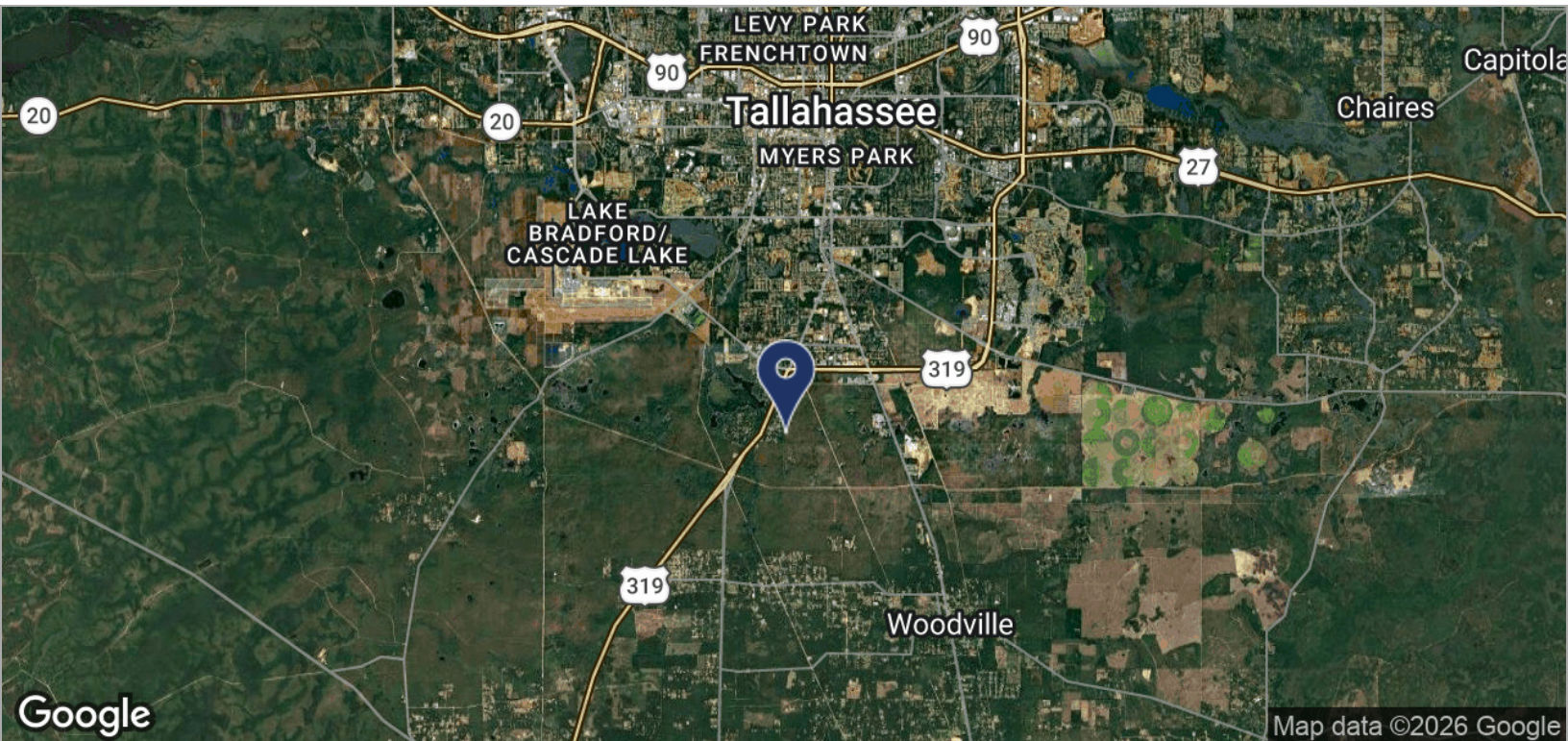
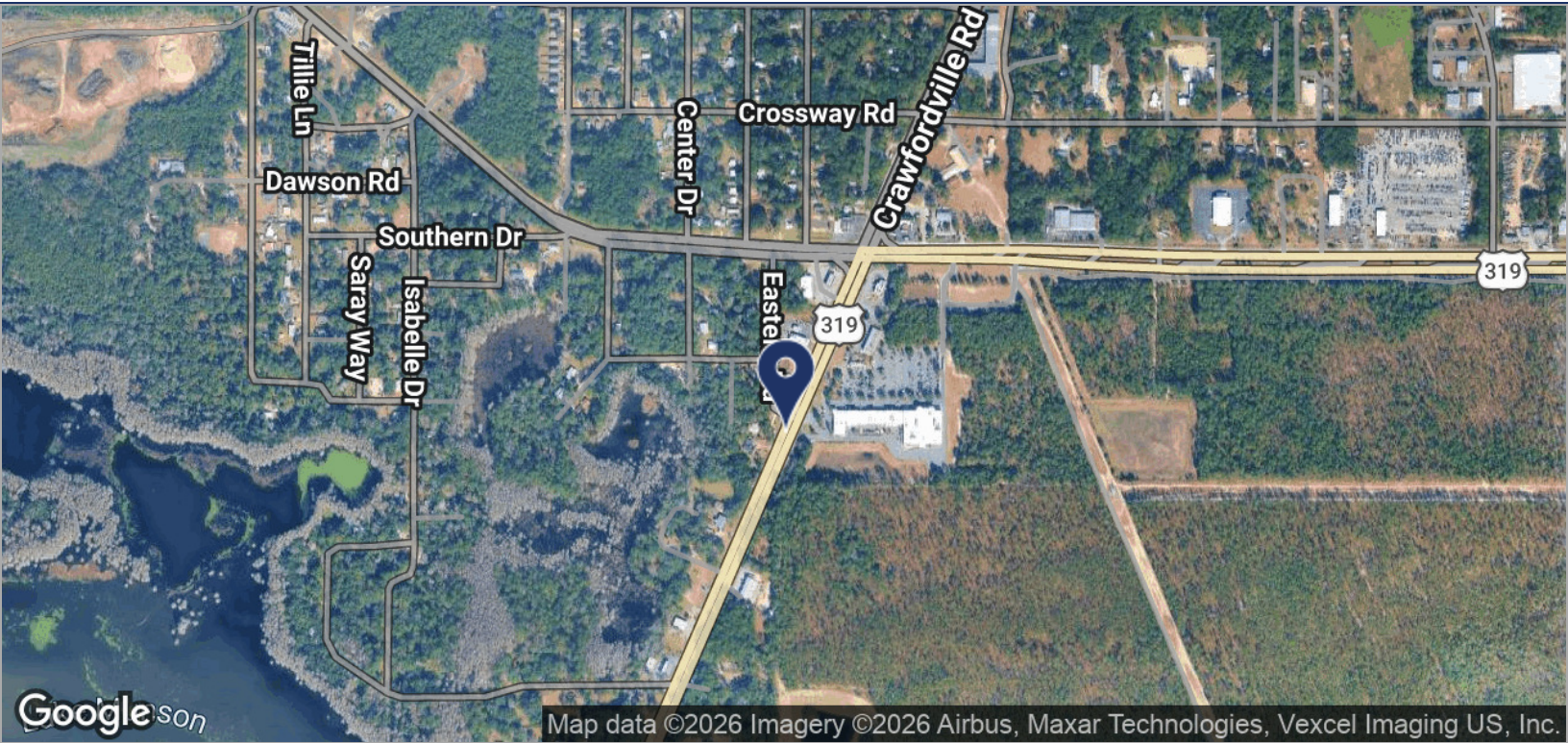
This information has been obtained from sources believed reliable. We have not verified it and make no guarantee, warranty or representation about it. Any projections, opinions, assumptions or estimates used are for example only and do not represent the current or future performance of the property. You and your advisors should conduct a careful, independent investigation of the property to determine to your satisfaction the suitability of the property for your needs. Photos herein are the property of their respective owners and use of these images without the express written content of the owner is prohibited.



LOCATION MAPS

# 5054 CRAWFORDVILLE HWY

CRAWFORDVILLE, FL 32327



**Bryan Cureton**  
 850.545.3687  
 bryan@tlgproperty.com

**TLG REAL ESTATE SERVICES**  
 3520 Thomasville Road, Suite 200, Tallahassee, FL 32309  
 850.385.6363

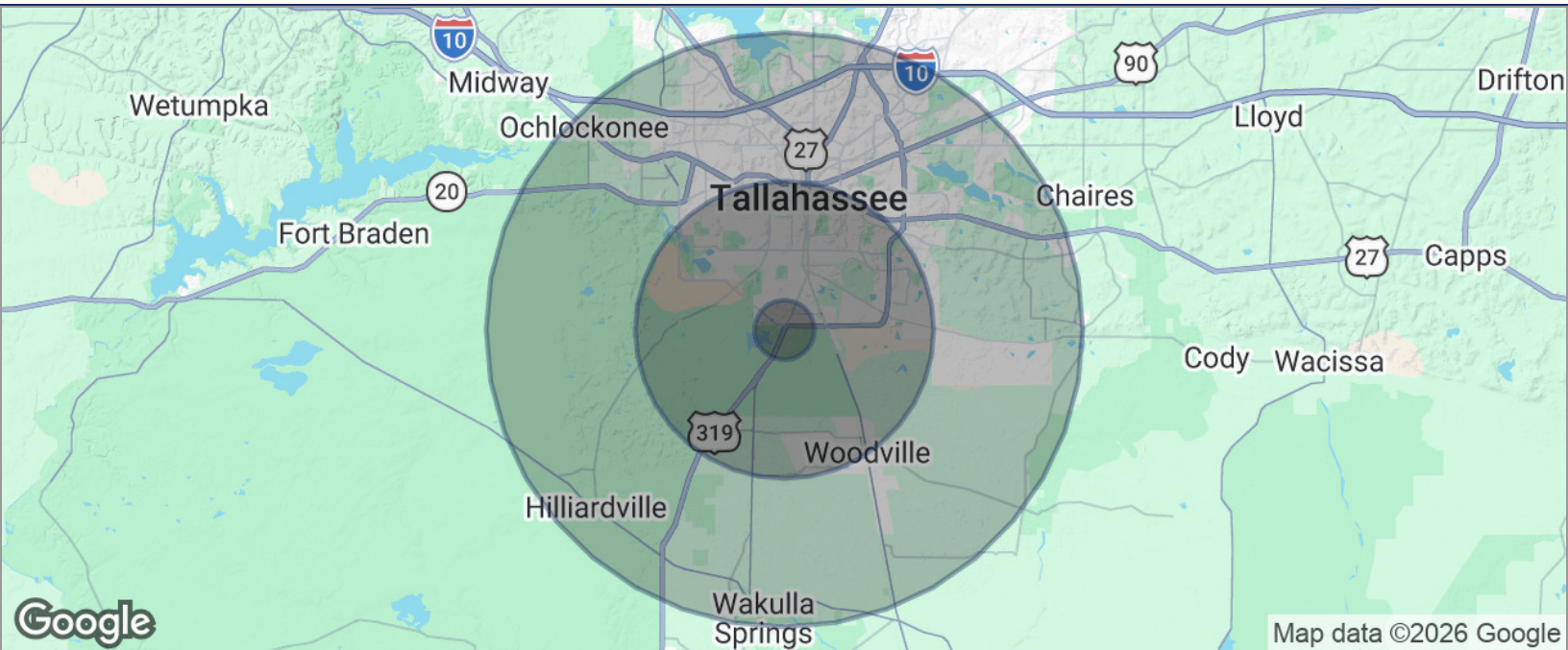




## DEMOGRAPHICS MAP

## 5054 CRAWFORDVILLE HWY

CRAWFORDVILLE, FL 32327



<b>POPULATION</b>	<b>1 MILE</b>	<b>5 MILES</b>	<b>10 MILES</b>
TOTAL POPULATION	2,108	70,992	220,303
MEDIAN AGE	30.7	27.9	30.2
MEDIAN AGE (MALE)	27.6	25.8	29.5
MEDIAN AGE (FEMALE)	33.1	29.7	30.9
<b>HOUSEHOLDS &amp; INCOME</b>	<b>1 MILE</b>	<b>5 MILES</b>	<b>10 MILES</b>
TOTAL HOUSEHOLDS	849	27,736	91,888
# OF PERSONS PER HH	2.5	2.6	2.4
AVERAGE HH INCOME	\$38,287	\$36,449	\$50,001
AVERAGE HOUSE VALUE	\$128,093	\$137,693	\$201,697

\* Demographic data derived from 2020 ACS - US Census

**Bryan Cureton**  
850.545.3687  
bryan@tlgproperty.com

**TLG REAL ESTATE SERVICES**  
3520 Thomasville Road, Suite 200, Tallahassee, FL 32309  
850.385.6363

